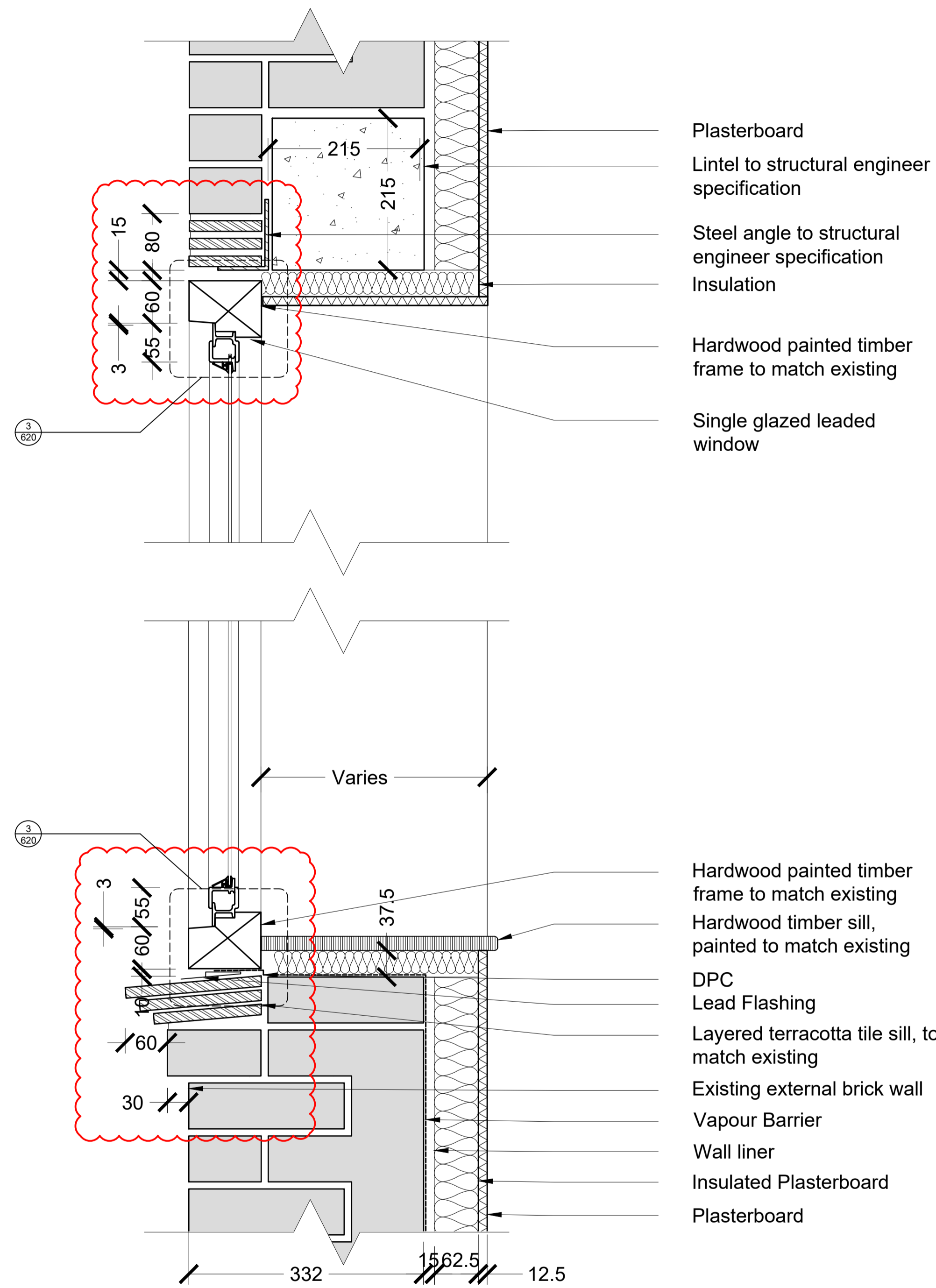
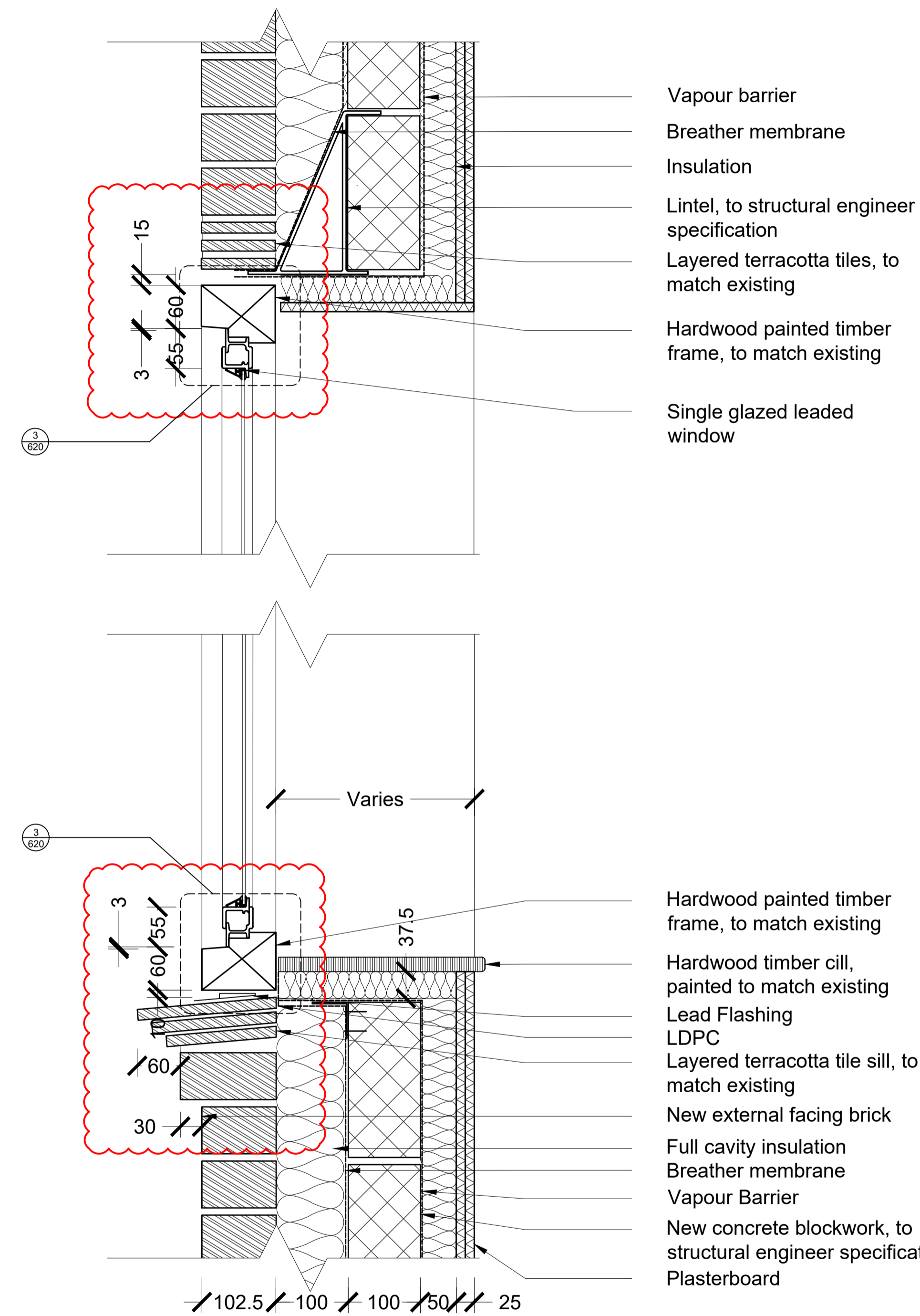


List of changes:

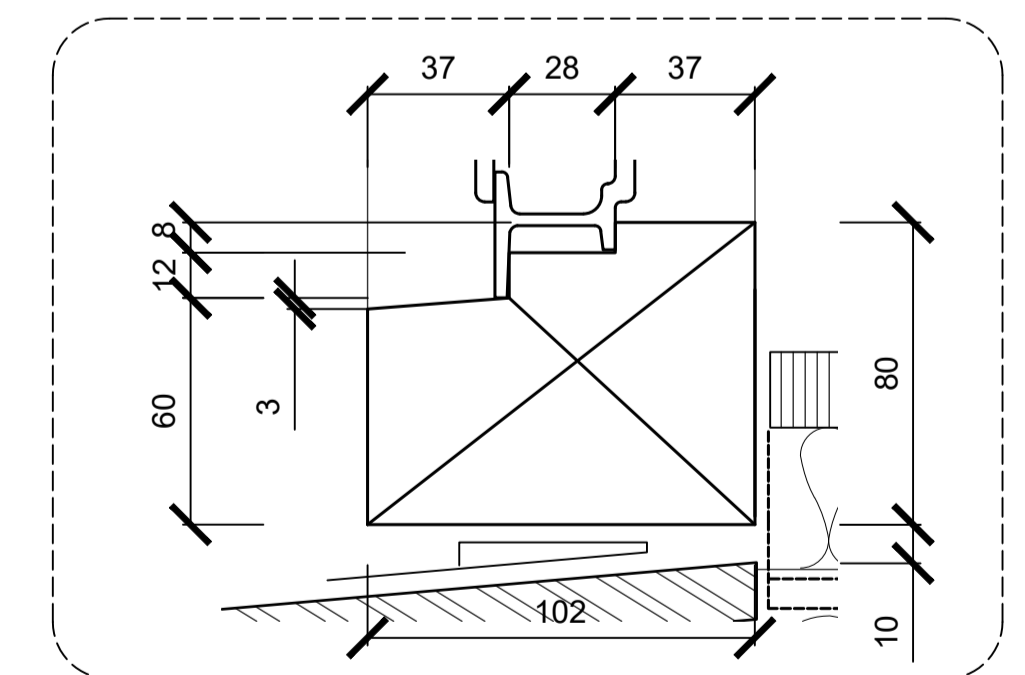
- Window frame profile update



1 - WINDOW DETAIL
EXISTING BUILDING CONDITIONS



2 - WINDOW DETAIL
NEW BUILD CONDITIONS



3 - HEAD AND SILL
PROFILE DIMENSIONS 1:2 @ A1

Revisions		Revisions									
Rev	Date	By	Description	Checked	Approved	Rev	Date	By	Description	Checked	Approved
P1	23.03.18	RB	Planning Conditions Discharge	JM	RH						
P2	04.10.18	TS	Window Glazing Amendment	JM	RH						
P3	27.02.19	TS	Sill and Frame Amendment	JM	RH						
P4	06.06.19	QJ	NMA Re-issue	ABP	RH						
P5	13.06.19	QJ	NMA Re-issue - Cloud Updates	RB	RH						

Note: brick dimensions are based upon measurements taken on site

Architect / Originator: Tate Harmer	Unit G182, Stamford Works, 3 Gillet Street, London N1E 6JH Tel: +44 (0)207 241 7481 Email: studio@tateharmer.com	Do not scale. All dimensions to be checked on site. This drawing is copyright.
Client: Platinum Land	8 Querpel House, 1 Duke of York Square, Kings Road, London, SW3 4LY	Date of Origin: 28.11.17 Drawn By: TS
Project: Belsize Park Firestation		Scale: 1:5
Drawing Title: TYPICAL WINDOW DETAIL SECTIONS		Drawing Status: Planning
Client Sign Off:	Drawing Number: BFS THA PR AL 620 P5	Revision: