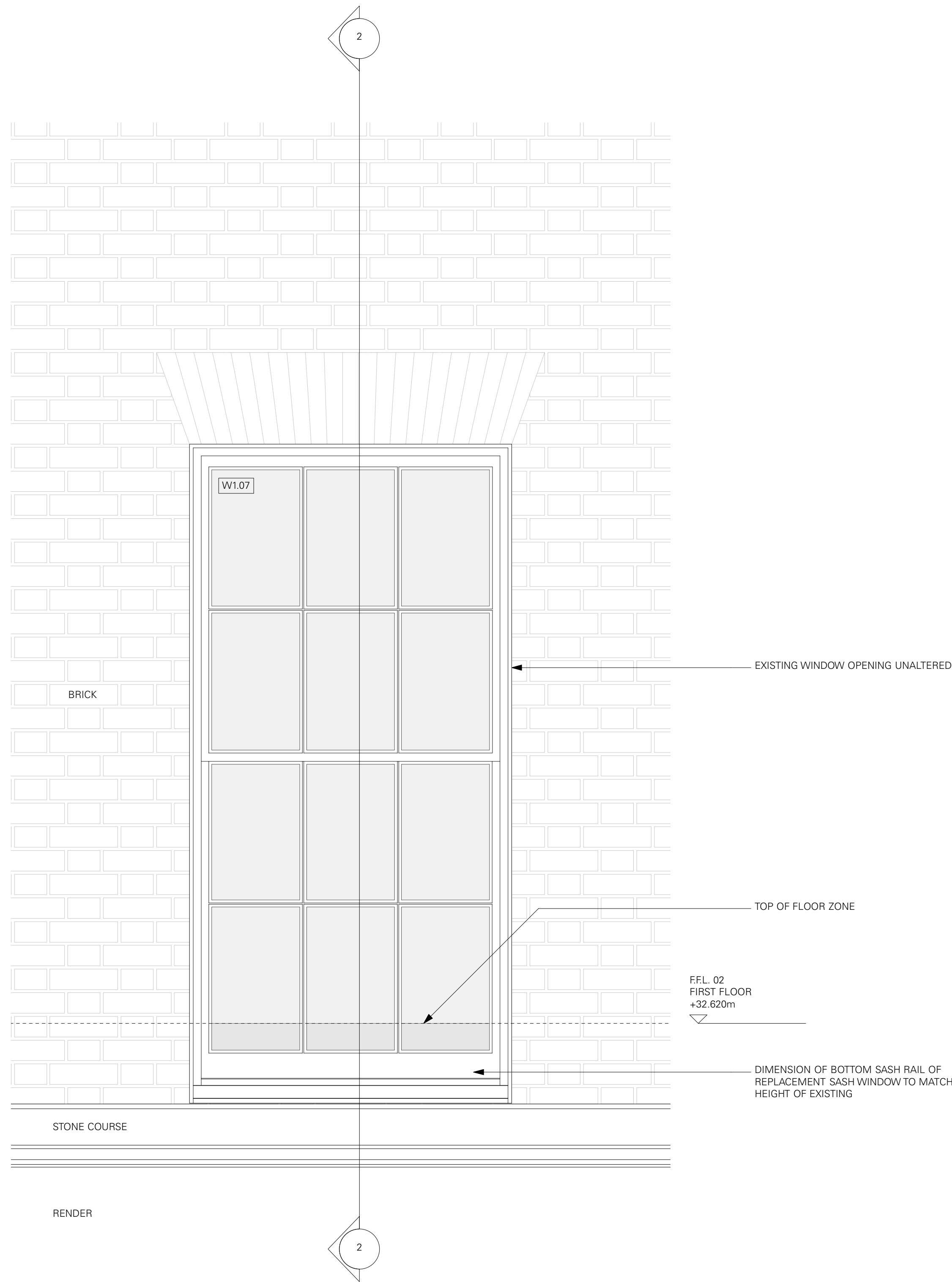
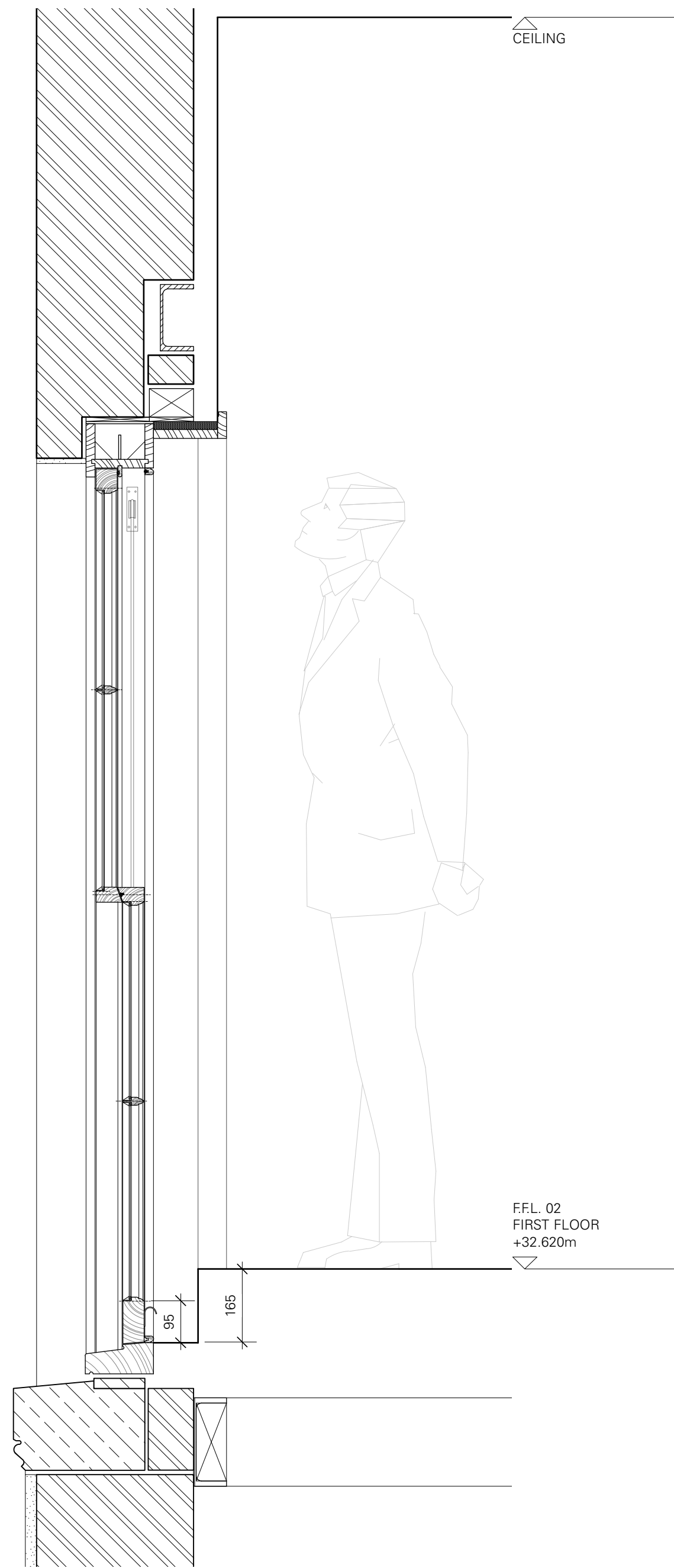


NOTES

READ IN CONJUNCTION WITH DRAWING No. 420



1 ELEVATION OF CONWAY ST 1ST FLOOR SASH WINDOW - AS CONSENTED



2 SECTION OF CONWAY ST 1ST FLOOR SASH WINDOW - AS CONSENTED

HC	PLANNING APPLICATION	08/7/2019	P0
CHECK	REVISION NOTES	DATE	REV.

33 FITZROY SQUARE  
LONDON  
W1T 6EU

DETAIL OF CONWAY STREET  
1ST FLOOR SASH WINDOW  
- AS CONSENTED

PLANNING  
DRAWING STATUS

262	1:50@A1	930	P0
JOB NO.	SCALE (AS SHOWN)	DRAWING NO.	REV.

**TC**  
**A**  
Thomas Croft Architects  
Studio 117  
Great Western Studios  
65 Alfred Road  
London, W2 5EU  
United Kingdom  
+44 (0)20 8962 0066  
email@thomascroft.com  
www.thomascroft.com#