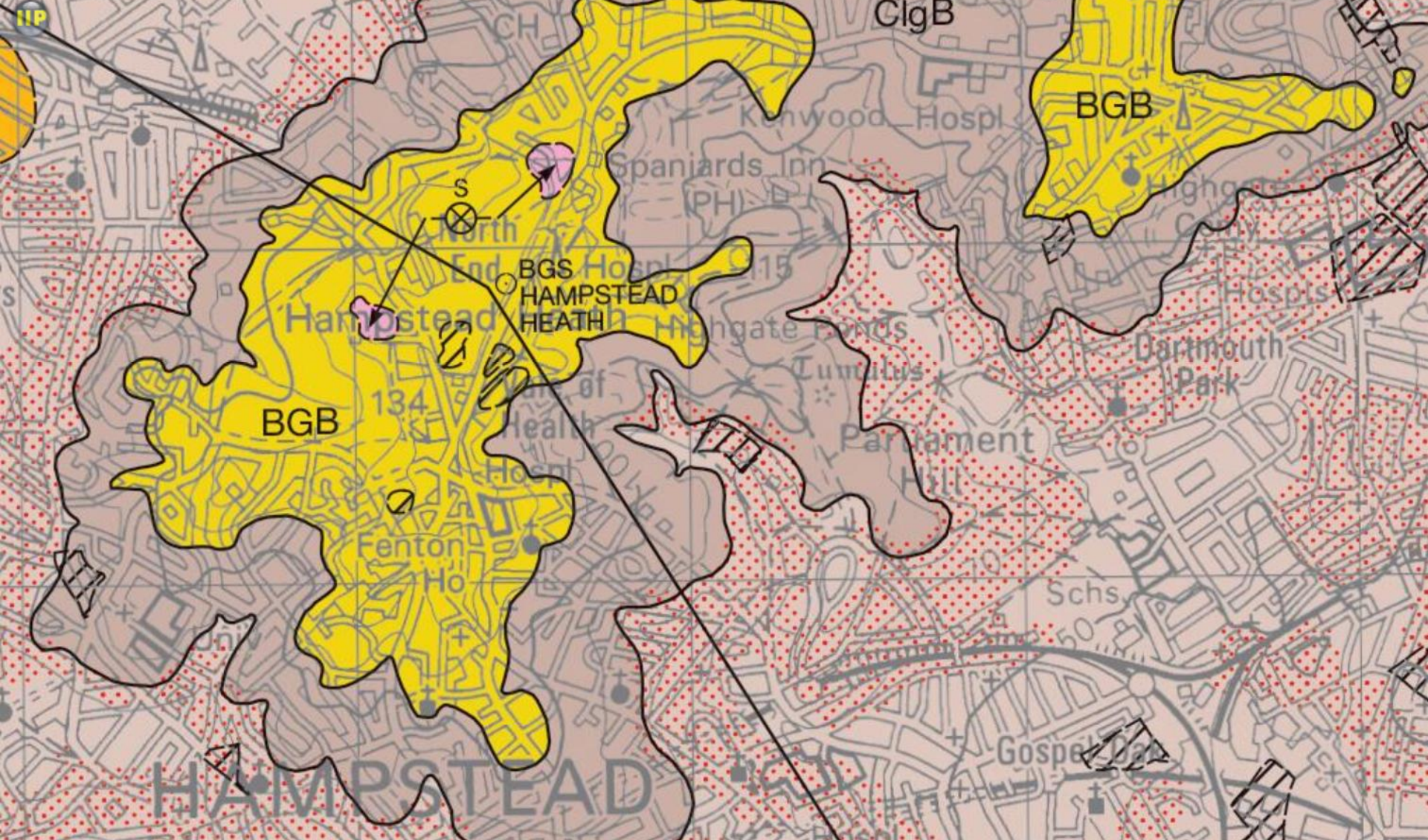


Evidence of sand-digging at Branch Hill Pond, Hampstead Heath

Prepared for Redington Frognal by
Diana Clements

London Geodiversity Partnership



BGS 1:50,000 North London 2005 available on line:

<http://www.largeimages.bgs.ac.uk/iip/mapsportal.html?id=1001750>

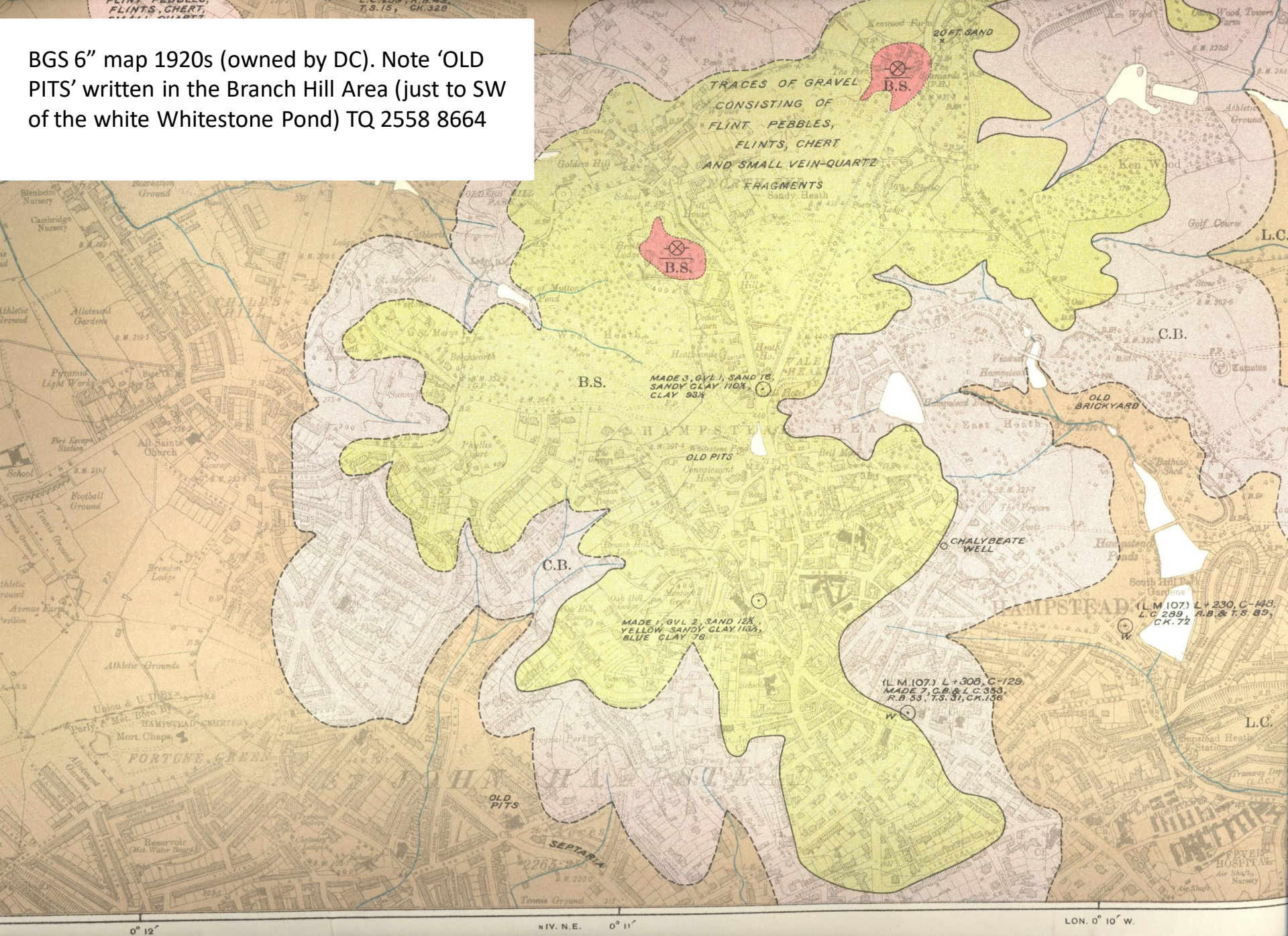
Worked Ground in the Bagshot Sand at TQ 2558 8644 is Branch Hill Pond



Hampstead Heath 1:5,000 (Corporation of London 2000) with details of BGS 1:10,000 TQ 28 NE added by D. Clements. Note Worked Ground at Branch Hill Pond



BGS 6" map 1920s (owned by DC). Note 'OLD PITS' written in the Branch Hill Area (just to SW of the white Whitestone Pond) TQ 258 8664





1819

First



1820-22 Harrow in distance [St. Mary's extreme R]



1825 unfinished



1825



1828



?c1828 (trees, house)



1836 (last) windmill never existed there



V&A 1821 view from Jack Straw's Castle(?with Kiln)



NB reverse 1821 ?BH - bigger





John Constable's view of Hampstead Heath

<https://www.theundergroundmap.com/wp-content/uploads/2015/01/constable.jpg>

<https://www.theundergroundmap.com/wp/branch-hill-pond> NB Branch Hill is not the caption beneath the painting. Notes below say 1827 (elsewhere 1819-20) Branch Hill Pond, which was covered in during 1889 because of the building of a covered reservoir, can still be seen as a distinct hollow in the heath which is still grassland even now. John Constable (1776-1837) came to Hampstead Heath in the late summer of 1819. the uneven ground provided splendid viewpoints over the heath and toward London to the south.

By 1827 Constable had rented on a permanent basis a small four-story house at 40 Well Walk, Hampstead Heath. He wrote Fisher that the drawing room of their new house situated on the high ground commanded “a view unequalled in Europe—from Westminster Abbey to Gravesend.” It was there in 1827 that he painted an important oil of Branch Hill Pond. Hampstead Heath. From a raised vantage point we look past a high hillock on the right across Branch Hill Pond to Windsor Castle and the fields of Harrow in the distance. Amid the rising and falling ground, labourers and farmers go about their chores of digging and hauling sand or tending animals. Two men fill a two-wheeled cart with sand much in demand for London building. A single figure with walking staff is seated above the sand diggers on the hill which partly conceals the roof and chimneys of a local architectural landmark known as the Salt Box.

In the distance to the left, a local thunderstorm showers an area beyond Windsor. Constable painted the broken ground & rsquo;of the heath, its hillocks and hollows in all their roughness. He took great delight in capturing the weedy bank in the foreground with separate thick strokes of sandy brown and green over a warm underpaint.