

JOINERY DETAIL SHEET

1 Complete New Flush Casement Window (Non DocL)

Customer	Johnson	Job No	D33021	Item No	9	Sheet	1 of 3
----------	---------	--------	--------	---------	---	-------	--------

Diagram	Sectional Details
<p>Flush casement window, Opening out, Viewed internally</p>	<p>Frame in Kit Form</p> <p>Frame Stop Ovolo</p> <p>Finished Frame Head 93 x 58 mm</p> <p>Finished Frame Jamb 93 x 58 mm</p> <p>Finished Mullion 93 x 70 mm</p> <p>Finished Cill 145 x 70 mm (10 mm horn)</p> <p>Sash Head 50 mm</p> <p>Sash Stile 50 mm</p> <p>Sash Btm Rail (int) 75 mm Stepped</p> <p>Sash Midrail 103 mm incl. 3 mm gap</p> <p>Sash Thickness 48 mm</p> <p>Glazing Bar 20 mm with 4 mm Nib</p> <p>Profile Ovolo</p> <p>Moulding Cutter 6 x 13 with 16 mm shoulder</p> <p>Glazing Rebate 8 x 17 mm</p>

Location	Third Floor RHS Sitting Room
Material	Accoya sashes, Accoya frame, Hardwood cill
Quantity	1

Ironmongery	4 x Casement Stay Pin Locking BA 4 x Casement Window Lock White 4 x Egress Casement Lock BA Matt Black 8 x Hinge Butt SC 3 inch 4 x Lock Chubb Window Key
Glazing	Single Glazed Case 6.4mm Clear Laminate
Dry Seal	White Tape Internally
Paint Finish	Internal Standard White External Standard White

Production Notes	Installation Notes
KIT FORM FRAME DUE TO RESTRICTED STAIRWELL ACCESS.	<p>Installed: Externally</p> <p>[Frame in Kit Form]</p> <p>1. CAREFULLY REMOVE THE LINER BETWEEN THE SHELF AND EXISTING WINDOWBOARD ON THE LHS. REINSTATE LINER ONCE WINDOW AND NEW WINDOWBOARD ARE FITTED.</p> <p>2. CEMENT FILLET EXTERNALLY. ACRYLIC SEAL INTERNALLY.</p> <p>3. FIT DRIP.</p> <p>4. TRANSFER STAYS AND HANDLES.</p> <p>5. FIT WINDOWBOARD AND QUADS.</p>

2 | 13 | 16 | 17

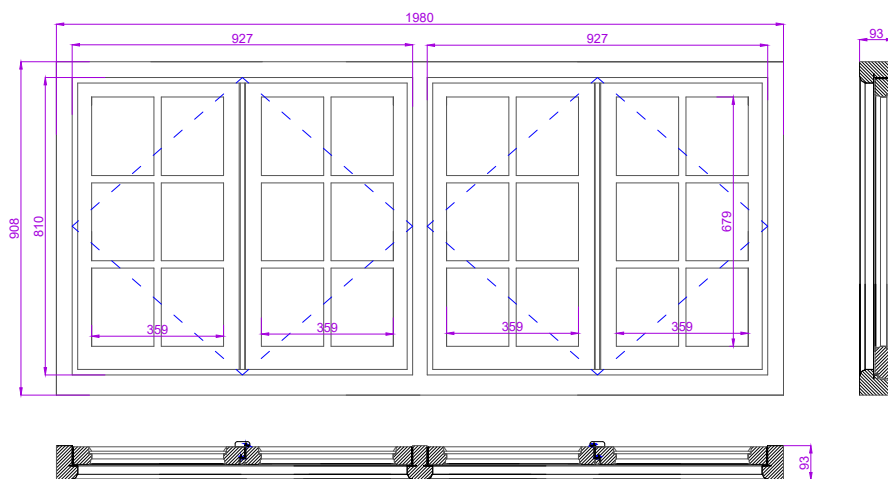
Job Tracking	External Access: Scaffold by Customer
Order received: 26-02-2019	Print date: 23-04-2019
Sold by: David Farebrother	Last modified by: Chris Jewiss
Surveyed by: Chris Jewiss	Last modified date: 23-04-2019

0 METRIC SCALE 1:10 ON A3

500mm

1000mm

INTERNALLY VIEWED
SCALE 1:10 ON A3



JOHNSON

JOB NO: 33021

SHEET 2 OF 3

Drawn by C JEWISS
Scale 1:10 at A3
Issue No 01
Date: MAR 2019

Material: See sheet 1

Finish - Int: See sheet 1
Ext: See sheet 1

Glass - See sheet 1

The Sash Window Workshop
4 Kiln lane,
Bracknell,
Berkshire RG12 1NA
tel: +44 (0)1344 868668
fax: +44 (0)1344 868858
email: jewisso@sashwindow.com

THIRD FLOOR
RHS SITTING ROOM

ITEM 9

0 METRIC SCALE 1:1 ON A3

50mm

100mm

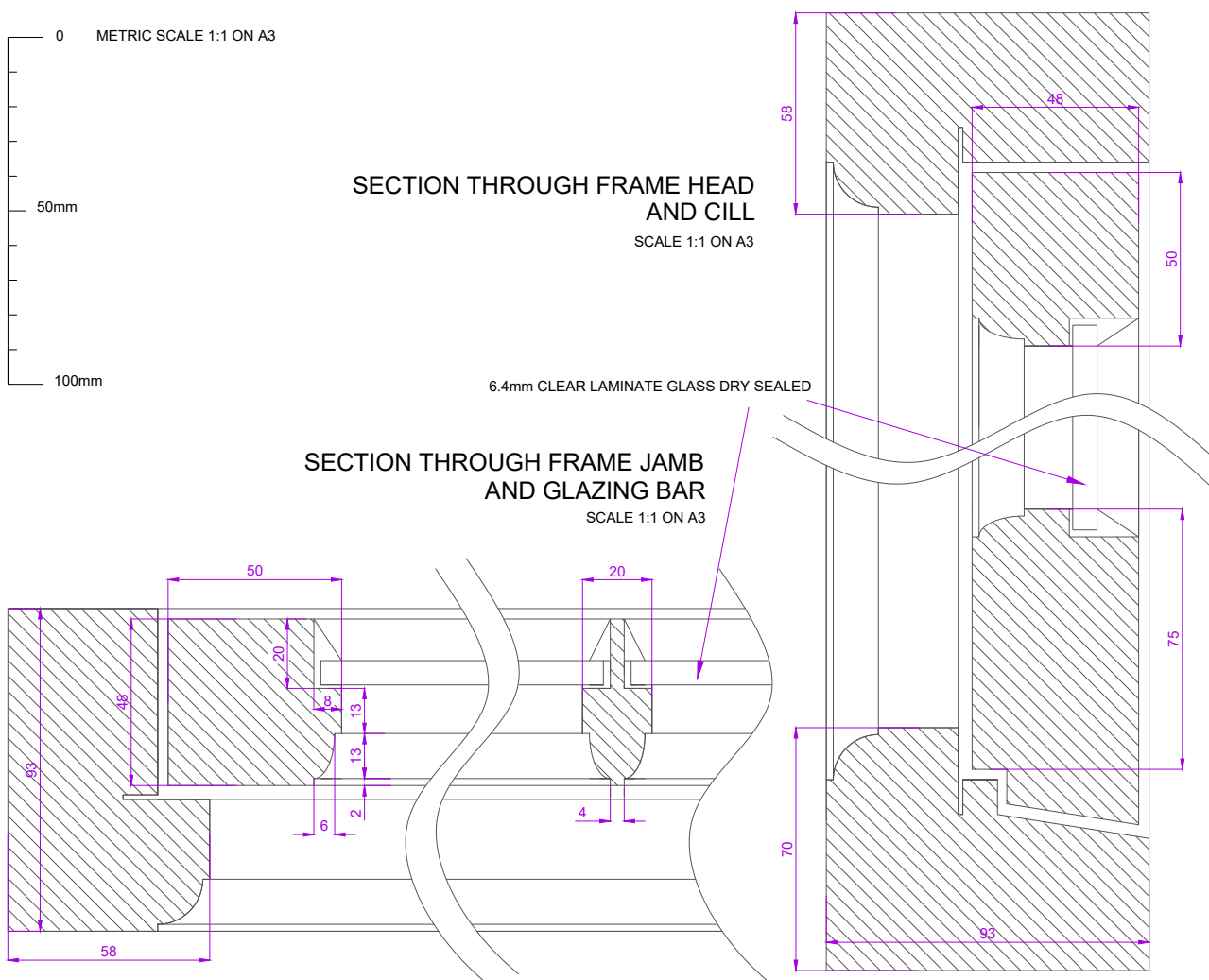
SECTION THROUGH FRAME HEAD AND CILL

SCALE 1:1 ON A3

SECTION THROUGH FRAME JAMB AND GLAZING BAR

SCALE 1:1 ON A3

6.4mm CLEAR LAMINATE GLASS DRY SEALED



JOHNSON

JOB NO: 33021

SHEET 3 OF 3

Drawn by C JEWISS
Scale 1:1 at A3
Issue No 01
Date: MAR 2019

Material: See sheet 1

Finish - Int: See sheet 1
Ext: See sheet 1

Cill Finish:
Glass - See sheet 1

The Sash Window Workshop
4 Kiln lane,
Bracknell,
Berkshire RG12 1NA
tel: +44 (0)1344 868668
fax: +44 (0)1344 868858
email: jewisso@sashwindow.com

SECOND/THIRD FLOOR
RHS BEDROOM 2/
SITTING ROOM

ITEM 7 & 9