

Proposed Cycle Storage  
1:50 @A3

Gated and Secure Communal

Entrance



Existing gate upgraded with maglock, keypad and fob system for Security.

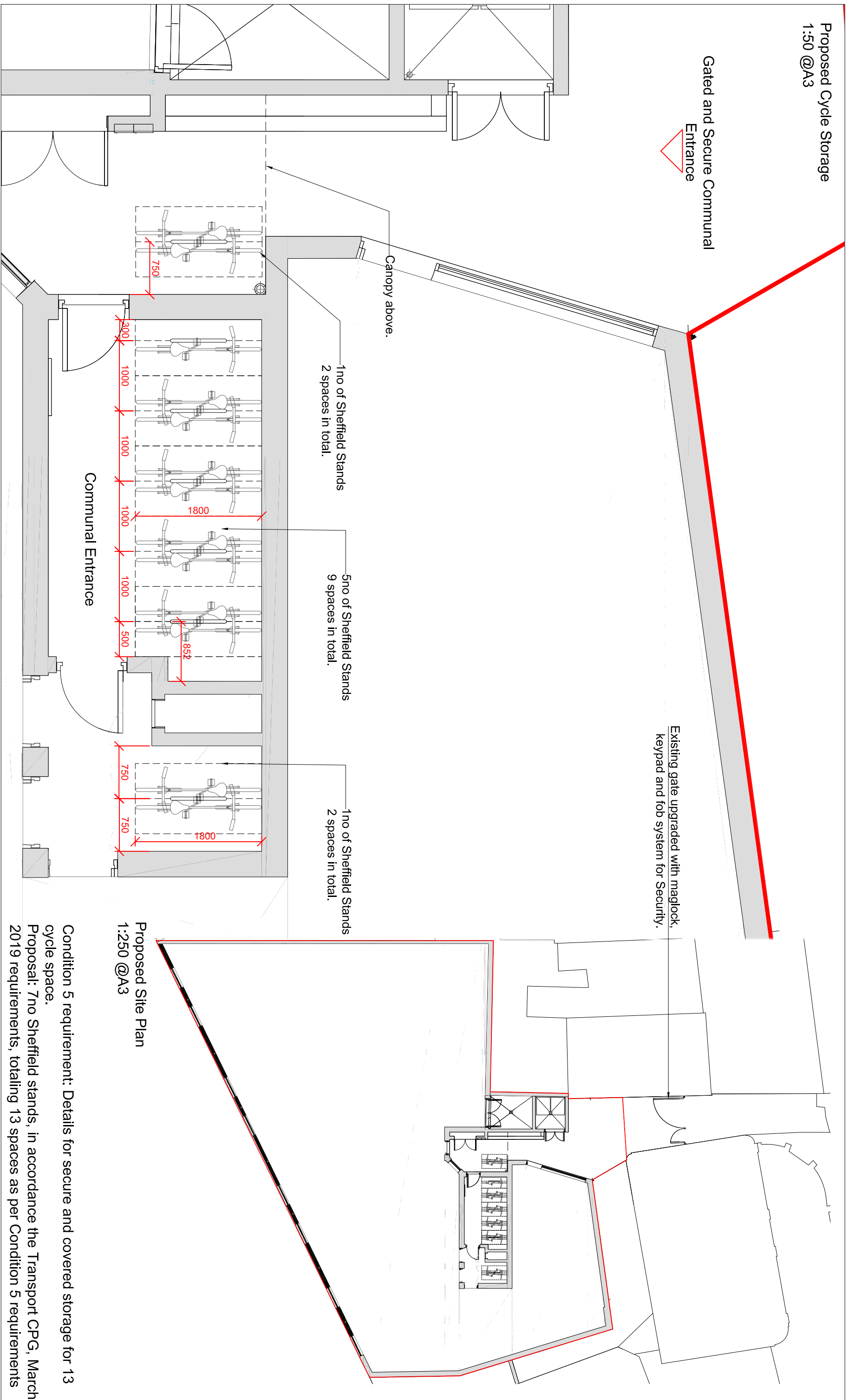
Canopy above.

1no of Sheffield Stands  
2 spaces in total.

5no of Sheffield Stands  
9 spaces in total.

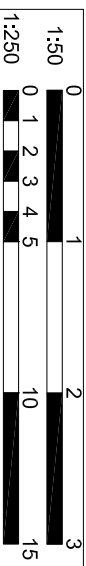
1no of Sheffield Stands  
2 spaces in total.

Communal Entrance



Proposed Site Plan  
1:250 @A3

Condition 5 requirement: Details for secure and covered storage for 13 cycle space.  
Proposal: 7no Sheffield stands, in accordance the Transport CPG, March 2019 requirements, totaling 13 spaces as per Condition 5 requirements



Project:  
1A Highgate Road,  
London, NW5 1JY

This drawing is the property of IDM Developments London Limited. Copyright is reserved. The drawing is issued on the condition that it is not copied, reproduced, retained or disclosed to any unauthorised person, either wholly or in part.

Rev:

Description:

Date:

Drawing Title:  
Proposed Cycle Storage

Scale:  
1:50/250

Date:  
15.08.19

Frame Size:  
A3

Drawing Ref:  
054\_Proposed Cycle Storage

CAD Ref:

Revision:  
P4