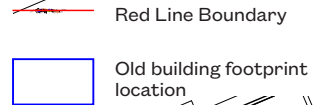


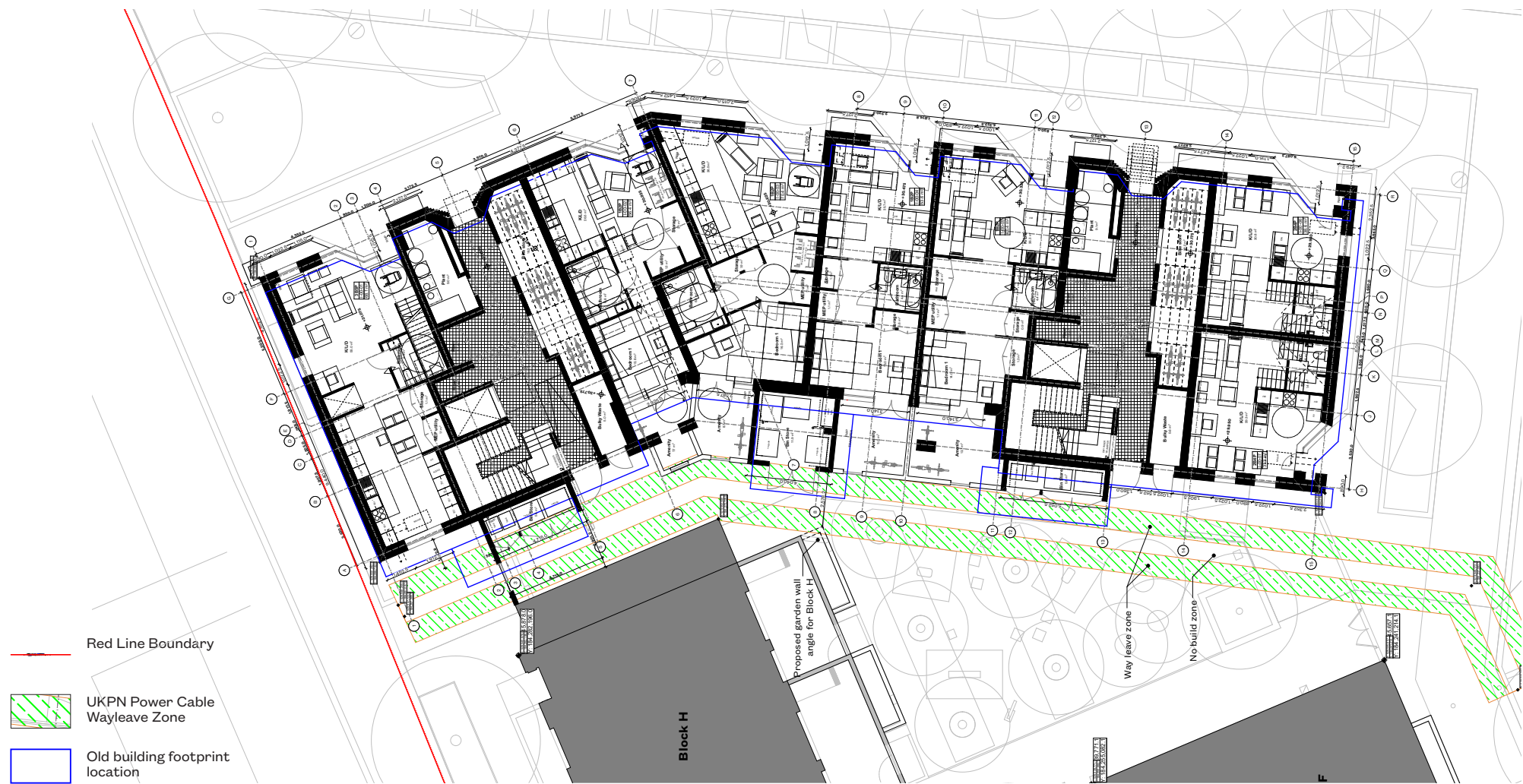
Location Move



5.42 Block I - Detail

Location Move

Block I has moved 750mm to the North-East in order to avoid the UKPN power cable



[This page is intentionally left blank]

6.0 Landscape

6.01 Block JKL - Detail Landscape

Drawing list to be submitted for Planning

PLANS	-	-	-	-
AGC377-GRA-1C-XX-DR-L-1101	General Arrangement	1-200	A1	02
AGC377-GRA-1C-XX-DR-L-1102	Hard & Soft Landscape Legend	n/a	A1	02
AGC377-GRA-1C-XX-DR-L-1103	Key Plan - Proposed Site Sections	1-200	A1	02
AGC377-GRA-1C-XX-DR-L-1104	Existing Tree Retention & Removal Plan	1-200	A1	02
AGC377-GRA-1C-XX-DR-L-1105	Key Plan - Sections Through Existing Trees	1-200	A1	02
AGC377-GRA-1C-XX-DR-L-1106	Existing Tree Retention & Removal Plan - Off-site Works	1-200	A1	01
AGC377-GRA-1C-XX-DR-L-2101	Drainage & Levels General Arrangement	1-200	A1	02
AGC377-GRA-1C-XX-DR-L-3101	Hard Landscape General Arrangement	1-200	A1	02
AGC377-GRA-1C-XX-DR-L-5101	Soft Landscape General Arrangement - Tree Planting	1-200	A1	02
AGC377-GRA-1C-XX-DR-L-5102	Soft Landscape General Arrangement	1-200	A1	02
SECTIONS/ELEVATIONS				
AGC377-GRA-1C-XX-DR-L-1301	Proposed Site Sections A-A'	1-50	A1	01
AGC377-GRA-1C-XX-DR-L-5302	Section Through Existing Tree Group G005	1-50	A1	01

Executive Summary

- An extensive process of consultation has informed the development of the public realm and landscape design. In order to enhance legibility of pedestrian navigation around the plots, emphasis has been placed on a few strongly connected high-quality routes. The impact of adjacent existing highways has been softened through improvements to pavements, including tree planting (new and retained), landscape features and creating pockets of space adjacent to footpaths such as the communal garden, play area and cycle store. Privacy buffers are incorporate adjacent to windows through the integration of landscape planters.
- The hard and soft landscape design and materiality is coherent, legible, inclusive and pedestrian friendly. All ramps and footpath are fully inclusive including for wheelchair access. Stepped access has been limited but, where used is fully compliant with latest codes and legislation and alternative ramp access is available to all communal areas. Handrails, contrasting edges and the like are included where required.
- The Communal Garden is safe secure and gated. Planting is generally low maintenance, robust, provides seasonal interest and attractive is to wildlife.

7.0 Appendix

7.01 Block JKL and Block I - CGI

View South towards Lulworth Tower - Consented Scheme



7.02 Block JKL - CGI

View South towards Lulworth Tower - Proposed Changes



7.03 Block JKL

View West along Agar Grove - Consented Scheme



7.04 Block JKL

View West along Agar Grove - Proposed Changes



7.05 Block I - CGI

View East along Agar Grove - Consented Scheme



7.06 Block I - CGI

View East along Agar Grove - Proposed Changes



Contact

AJ100 Practice of the Year 2016 & 2017

London

159 St John Street
EC1V 4QJ
+44 (0)20 7336 8030

Edinburgh

Spaces, 1 Lochrin Sq
92 Fountainbridge
EH3 9QA
+44 (0)131 370 8820

Manchester

3C Tariff Street
M1 2FF
+44 (0)161 641 5522

Los Angeles

2128 Cotner Ave
CA 90025
+1 213 493 2001

hawkinsbrown.com

mail@hawkinsbrown.com