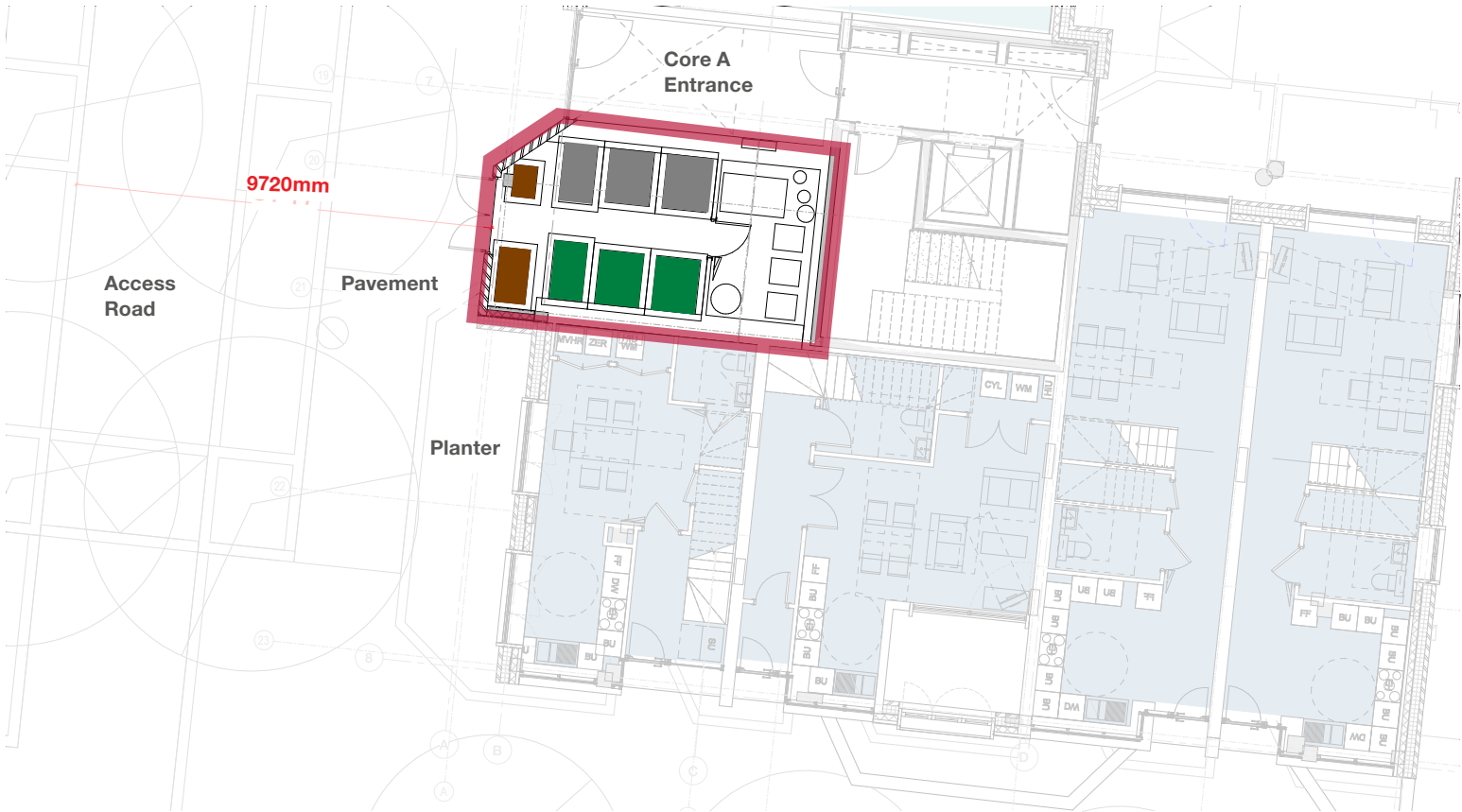


# 4.52 Block JKL - Detail Core A Bin Store

Core	No. of Flats	Refuse	Recycle	Brown	Bulky Waste (cubic metres)
A	27	3 x 1280L	3 x 1280L	1x500L 1 x 240L	All provision in Core C



Key Plan - Ground Floor



## Key

- Refuse
- Recycling
- Food Waste

# 4.53 Block JKL - Detail Core B (Shop) Bin Store

Core	No. of Flats	Refuse	Recycle	Brown
B (Shop)	N/A	1 x 1280L	1 x 1280L	1 x 500L



Key Plan - Ground Floor

- Calculations based on Camden Waste storage and arrangements for residential and commercial units (Supporting document for planning guidance CPG1 'Design' Storage and collection of recycling and waste) - March 2019

- As clause 5.17, it should be noted that there is no accurate guidance for the measurement of buisness waste as a conversion to square metres of floor space. Due to this we have provided one large bin for each type of waste.

## Key

- Refuse
- Recycling
- Food Waste