

01. Clay Facing Brickwork
Type A: Plinth
Manufacturer: TBC
Type: Green Glazed Brick
Mortar: To match brick type B

02. Clay Facing Brickwork
Type B: Main brick
Manufacturer: Janinhoff or similar approved
Type: STP-EF-08C-FS or similar approved
Mortar: To match completed Block A. Refer to Planning Condition 03 Report 06/07/2015

03. Clay Facing Brickwork
Type C: Fifth floor
Manufacturer: Van der Sanden or similar approved
Type: Hagen W/S 501 or similar approved
Mortar: TBC

04. Glass Reinforced Concrete Window Reveal
Manufacturer: GRC UK or similar approved
Finish: Shot blast
Colour: Off white/beige

05. Aluminium/Timber Composite Window
Manufacturer: Internorm or similar approved
Type: HF-410 or similar approved
Frame Colour: PPC 'Moss Grey' RAL 7003

06. Fibre Cement Soffit Panel to Corner Balconies
Manufacturer: Equitone or similar approved
Type: Tectiva or similar approved
Colour: Linen (to match GRC)

07. Paving Slab to Balcony
Manufacturer: Marshalls or similar approved
Type: Paver or similar approved
Colour: Light Grey/Brown

08. Floor tiling to communal lobby, flat and maisonette entrances
Manufacturer: Mosaico del sur or similar approved
Type: Pattern or similar approved
Colour: Each tile has two colours from standard range, exact colours tbc.

09. Wall tiling to communal lobby
Manufacturer: Mosaico del sur or similar approved
Type: Pattern or similar approved
Colour: Each tile has two colours from standard range, exact colours tbc.

10. Tiling to Solariums and Bathrooms
Manufacturer: Domus or similar approved
Type: Pittorica or similar approved
Colour: DCTR 01, DCTR 12, DCTR 14



Copyright Hawkins\Brown Architects

No implied licence exists. This drawing should not be used to calculate areas for the purposes of valuation. Do not scale this drawing. All Dimensions to be checked on the site by the contractor and such dimensions to be their responsibility. All work must comply with relevant British Standards and Building Regulations requirements. Drawing errors and omissions to be reported to the architect. To be read in conjunction with Architect's specification and other consultant information.

Rev	Description	Date
P01	Issued for Planning	19.08.19

150 St John Street
London EC1V 4QJ

mail@hawkinsbrown.com
hawkinsbrown.com

Hawkins\Brown

Project
Agar Grove
Phase 1c - Block JKL

Drawing
Material Samples

Scale	Date
@ A3	08/16/19

Drawn By	Checked By
AW	JW

Job Number	Status	Purpose of Issue
1423	S2	Planning

Drawing No.	Rev
AGV-HBA-NE-XX-DR-A-08-0510	P01

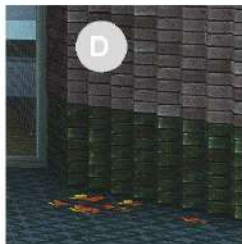
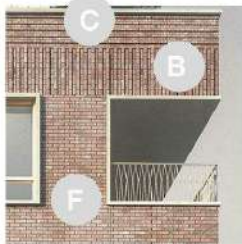
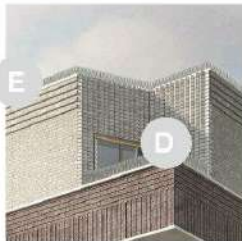
Copyright Hawkins\Brown Architects

No implied licence exists. This drawing should not be used to calculate areas for the purposes of valuation. Do not scale this drawing. All Dimensions to be checked on the site by the contractor and such dimensions to be their responsibility. All work must comply with relevant British Standards and Building Regulations requirements. Drawing errors and omissions to be reported to the architect. To be read in conjunction with Architect's specification and other consultant information.

Rev	Description	Date
P01	Issued for Planning	19.08.19



3 Bay Study Key Pla
1 : 1000



A = Rusticated base
Stretcher bond
Recessed course one in every five

B = Band
Vertical stack bond
Recessed every other course

C = Band
Stretcher bond
Recessed every other course

D = Sawtooth bond
Stack bond
Bricks arranged on angle

E = Band
Stretcher bond
Recessed every other course

F = Body
Stretcher bond



150 St John Street
London EC1V 4QJ

mail@hawkinsbrown.com
hawkinsbrown.com

Hawkins\Brown

Project
Agar Grove
Phase 1c - Block JKL

Drawing
Bay Study

Scale	Date
@ A3	08/16/19

Drawn By	Checked By
SW	JW

Job Number	Status	Purpose of Issue
1423	S2	Planning

Drawing No.	Rev
AGV-HBA-NE-XX-DR-A-08-0511	P01