



General notes:

This drawing is copyright of KSR architects. This drawing must be read in conjunction with the Designer's Risk Assessment, specification and all other relevant documentation and drawings. KSR architects accept no liability for any expense, loss or damage of whatsoever nature and however arising from any variation made to this drawing or in the execution of the work to which it relates which has not been referred to them and their approval obtained.

Do not scale from this drawing or the digital data, only figured dimensions are to be used. For Planning refer to linear scale.

Check all dimensions on site prior to carrying out any works - advise any discrepancy

Notes/Legends:

A	Planning Application	18/04/2019	
Rev	Description	Date	Chk

© KSR architect

## PLANNING

### Key Player



**KSR ARCHITECTS**  
KSR Architects LLP  
14 Greenland Street  
London NW1 0ND  
mail@ksrarchitects.com  
t: +44 (0)20 7692 5000  
www.ksrarchitects.com

Project:

# THE WATER HOUSE

Title:

**Location Plan**

Date: 17/04/18		Drawn By: CP	Checked: RM
Scale: 1:1250 @A1		Status: Planning	
Project Ref:	Drawing No:		Revision:
<b>17007</b>	<b>17007-P001</b>		<b>A</b>





General notes:  
This drawing is copyright of KSR architects. This drawing must be read in conjunction with the Designer's Risk Assessment, specification and all other relevant documentation and drawings. KSR architects accept no liability for any expense, loss or damage of whatsoever nature and however arising from any variation made to this drawing or in the execution of the work to which it relates which has not been referred to them and their approval obtained.  
Do not scale from this drawing or the digital data, only figured dimensions are to be used. For Planning refer to linear scale. Check all dimensions on site prior to carrying out any works - advise any discrepancy

Notes/Legends

B Revised Planning Application 23/07/2019  
A Planning Application 18/04/2019

Rev	Description	Date	Chd
-----	-------------	------	-----

11 KSR architects  
Stamp

PLANNING

Key Plan



**KSRARCHITECTS**  
KSR Architects LLP  
14 Grosvenor Street  
London W1W 0HD  
t +44 (0)20 7882 5000  
www.ksararchitects.com  
mail@ksararchitects.com

Project:  
**THE WATER HOUSE**

Title:  
**Existing Site Plan**

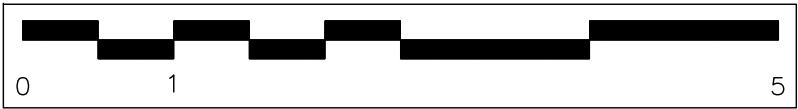
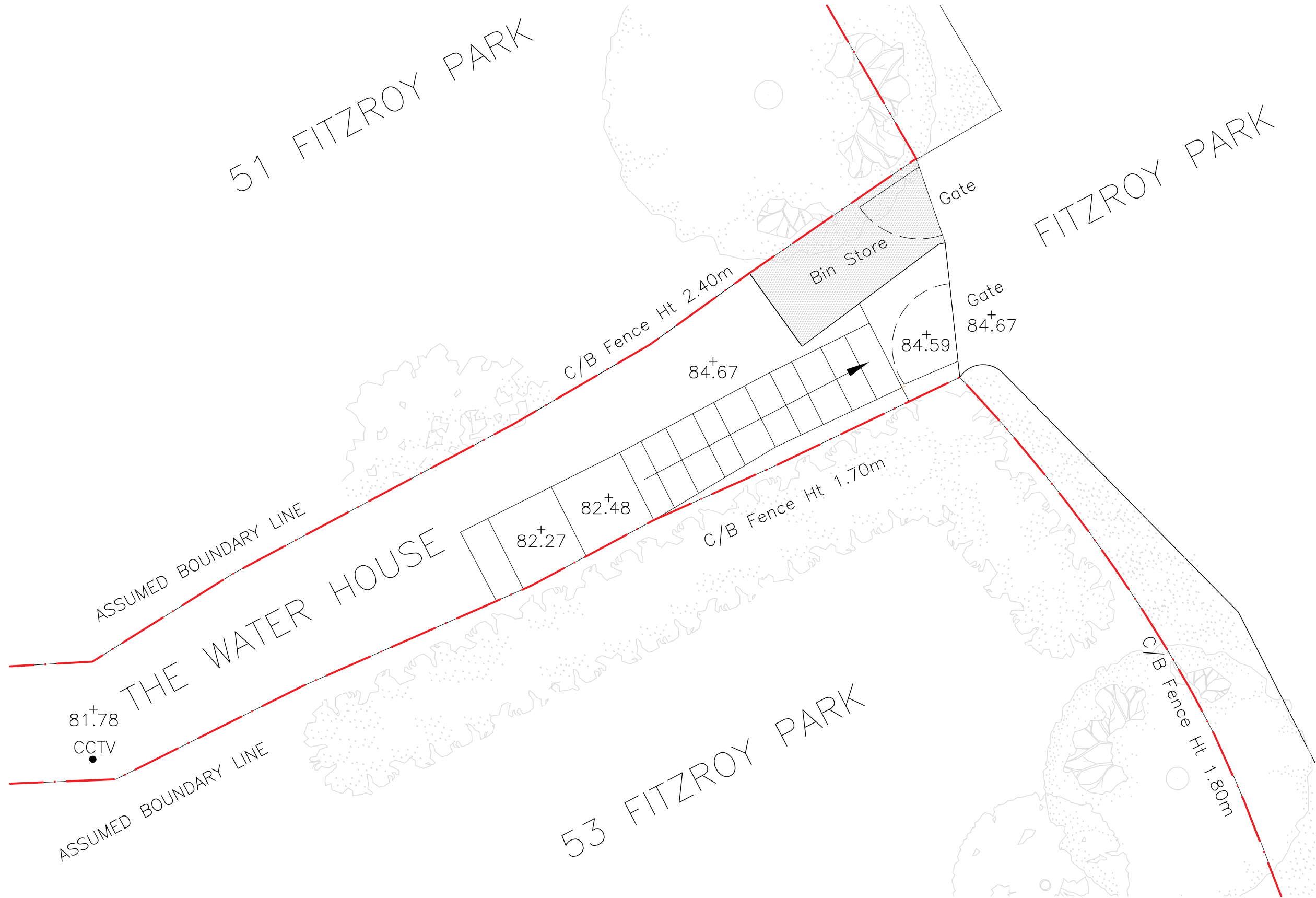
Date	17/04/19	Drawn By	Author	Checked	Checked
------	----------	----------	--------	---------	---------

Scale	1:200 (B/A)	1:400 (B/A)	Status
-------	-------------	-------------	--------

Project Ref	Drawing No	Revision
-------------	------------	----------

17007	17007-P002	B
-------	------------	---





General notes:  
This drawing is copyright of KSR architects. This drawing must be read in conjunction with the Designer's Risk Assessment, specification and all other relevant documentation and drawings. KSR architects accept no liability for any expense, loss or damage of whatsoever nature and however arising from any variation made to this drawing or in the execution of the work to which it relates which has not been referred to them and their approval obtained.  
Do not scale from this drawing or the digital data, only figured dimensions are to be used, for Planning refer to linear scale. Check all dimensions on site prior to carrying out any works - advise any discrepancy

Notes/Legends

A Planning Application		18/04/19
Rev	Description	Date

© KSR architects

Steps

PLANNING

Key Plan

**KSRARCHITECTS**  
KSR Architects LLP  
14 Greenleaf Street  
London W1T 0AG  
mail@ksrarchitects.com  
t +44 (0)20 7652 6000  
www.ksrarchitects.com

Project  
**THE WATER HOUSE**

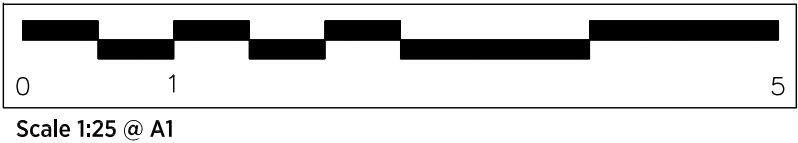
Title  
**Existing Plan - External Platform Lift**

Date	17/04/19	Drawn By	CP	Checked	RM
Scale	1:25 @ A1	1:50 @ A3	Status	Planning	

Project Ref	17007	Drawing Ref	17007-P003	Revision	A
-------------	-------	-------------	------------	----------	---



1 Existing Section - External Platform Lift  
1:25 @ A1



General notes:  
This drawing is copyright of KSR architects. This drawing must be read in conjunction with the Designer's Risk Assessment, specification and all other relevant documentation and drawings. KSR architects accept no liability for any expense, loss or damage of whatsoever nature and however arising from any variation made to this drawing or in the execution of the work to which it relates which has not been referred to them and their approval obtained.  
Do not scale from this drawing or the digital data, only figured dimensions are to be used, for Planning refer to linear scale. Check all dimensions on site prior to carrying out any works - advise any discrepancy

Notes/Legends

A	Planning Application	18/04/19
Rev	Description	Date

© KSR architects

18/04/19

PLANNING

Key Plan

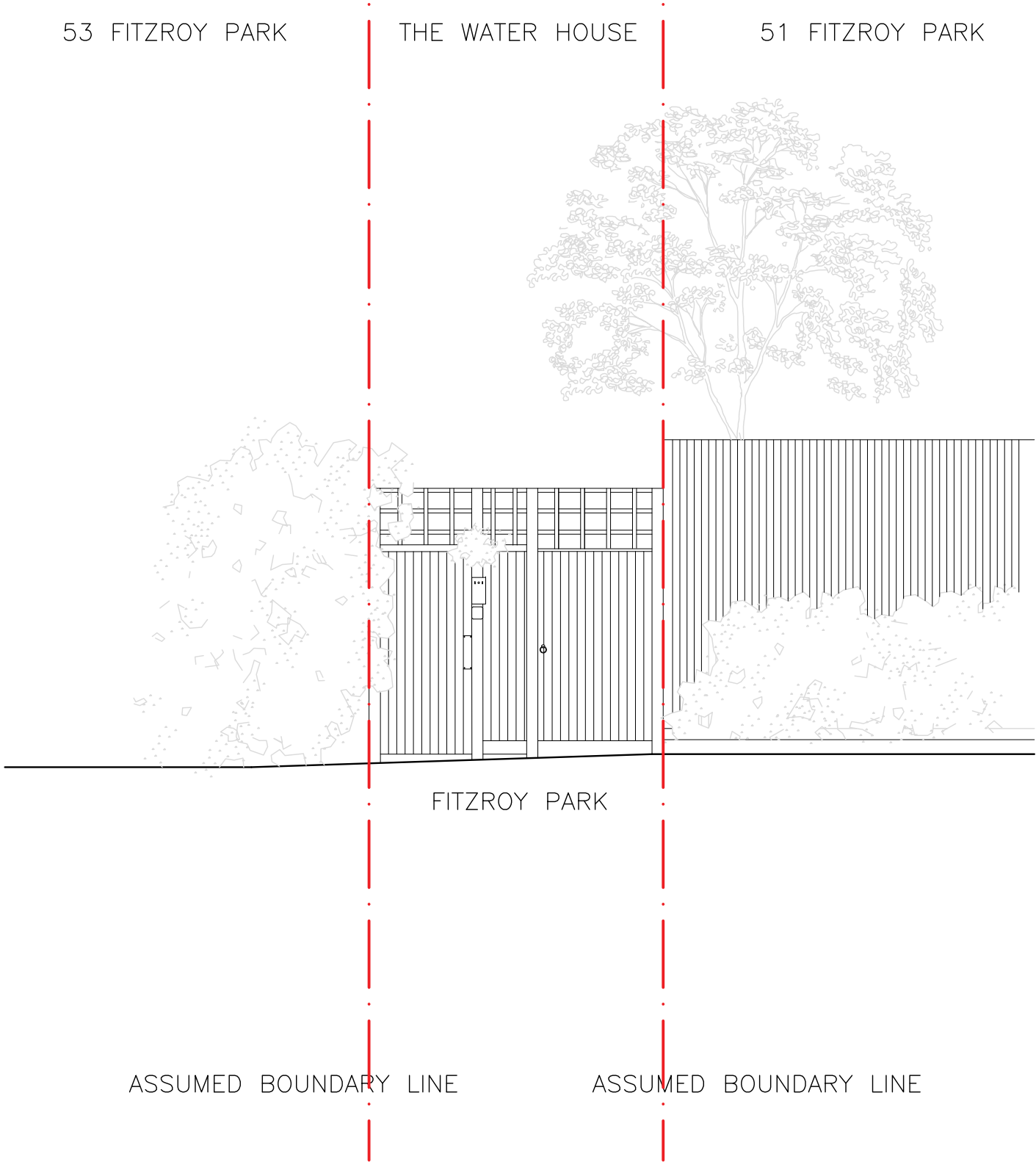
**KSRARCHITECTS**  
KSR Architects LLP  
14 Greenford Street  
London W11 1AQ  
t: +44 (0)20 7682 6000  
e: mail@ksrarchitects.com  
www.ksrarchitects.com

Project  
**THE WATER HOUSE**

Title:  
**Existing Section - External Platform Lift**

Date:	17/04/19	Drawn By:	CP	Checked:	RM
Scale:	1:25 @ A1	1:50 @ A3	Status:	Planning	

Project Ref:	17007	Drawing Ref:	17007-P004	Revision:	A
--------------	-------	--------------	------------	-----------	---



General notes:  
This drawing is copyright of KSR architects. This drawing must be read in conjunction with the Designer's Risk Assessment, specification and all other relevant documentation and drawings. KSR architects accept no liability for any expense, loss or damage of whatsoever nature and however arising from any variation made to this drawing or in the execution of the work to which it relates which has not been referred to them and their approval obtained.  
Do not scale from this drawing or the digital data, only figured dimensions are to be used, for Planning refer to linear scale. Check all dimensions on site prior to carrying out any works - advise any discrepancy

Notes/Legends

A Planning Application 18/04/19

Rev	Description	Date	Drawn
-----	-------------	------	-------

© KSR architects

Steps

PLANNING

Key Plan

**KSRARCHITECTS**  
KSR Architects LLP  
14 Greenhead Street  
London W1T 1AQ  
Email: [mail@ksrarchitects.com](mailto:mail@ksrarchitects.com)  
Tel: +44 (0)20 7682 6000  
www.ksrarchitects.com

Project  
**THE WATER HOUSE**

Title:  
**Existing Elevation - External Platform Lift**

Date:	17/04/19	Drawn By:	CP	Checked:	RM
-------	----------	-----------	----	----------	----

Scale:	125 @ A1 - 150 @ A3	Status:	Planning
--------	---------------------	---------	----------

Project Ref:	17007	Drawing Ref:	17007-P005	Revision:	A
--------------	-------	--------------	------------	-----------	---





General notes:  
This drawing is copyright of KSR architects. This drawing must be read in conjunction with the Designer's Risk Assessment, specification and all other relevant documentation and drawings. KSR architects accept no liability for any expense, loss or damage of whatsoever nature and however arising from any variation made to this drawing or in the execution of the work to which it relates which has not been referred to them and their approval obtained.  
Do not scale from this drawing or the digital data, only figured dimensions are to be used. For Planning refer to linear scale. Check all dimensions on site prior to carrying out any works - advise any discrepancy

Notes/Legends

B	Revised Planning Application	23/07/2019
A	Planning Application	18/04/2019

Rev	Description	Date	Chd
-----	-------------	------	-----

By KSR architects

Scale

## PLANNING

Key Plan



**KSRARCHITECTS**

KSR Architects LLP  
14 Grosvenor Street  
London W1V 0ND  
t +44 (0)20 7882 5000  
www.ksararchitects.com

Project:

**THE WATER HOUSE**

Title:

**Proposed Site Plan**

Date:	18/04/19	Drawn By:	CP	Checked:	RM
-------	----------	-----------	----	----------	----

Scale:	1:200 (BA)	Status:	
--------	------------	---------	--

Project Ref:	Drawing No:	Revision:
17007	17007-P006	B

## Proposed Site Plan

1:200



51 FITZROY PARK

FITZROY PARK

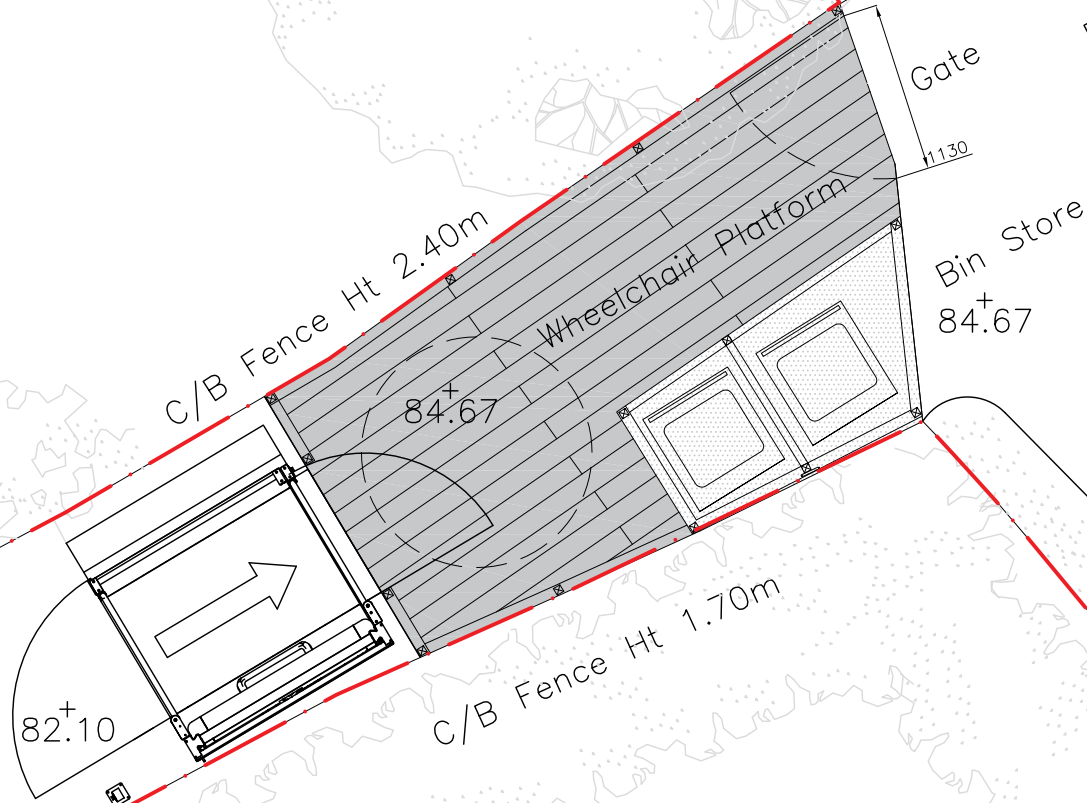
ASSUMED BOUNDARY LINE

81<sup>+</sup>.78  
CCTV

ASSUMED BOUNDARY LINE

THE WATER HOUSE

53 FITZROY PARK



General notes:  
This drawing is copyright of KSR architects. This drawing must be read in conjunction with the Designer's Risk Assessment, specification and all other relevant documentation and drawings. KSR architects accept no liability for any expense, loss or damage of whatsoever nature and however arising from any variation made to this drawing or in the execution of the work to which it relates which has not been referred to them and their approval obtained.  
Do not scale from this drawing or the digital data, only figured dimensions are to be used, for Planning refer to linear scale. Check all dimensions on site prior to carrying out any works - advise any discrepancy

Notes/Legends

Planning Application		18/04/19	
Rev	Description	Date	Chkd

© KSR architects

Steps

PLANNING

Key Plan

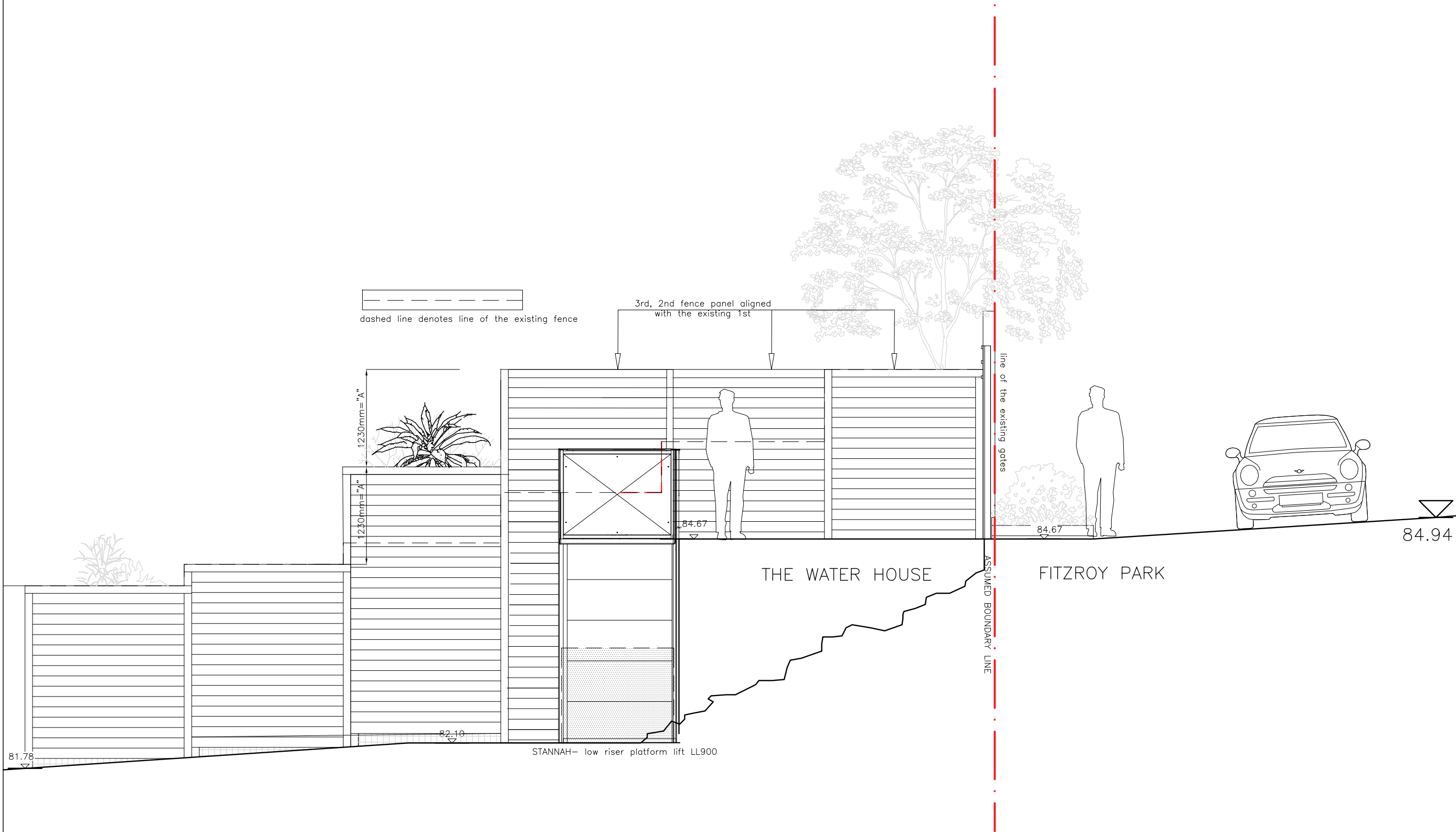
**KSRARCHITECTS**  
KSR Architects LLP  
14 Greenleaf Street  
London W1T 0AG  
mail@ksrarchitects.com  
t +44 (0)20 7682 6000  
www.ksrarchitects.com

Project  
**THE WATER HOUSE**

Title:  
**Proposed Plan - External Platform Lift**

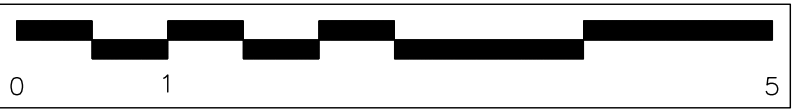
Date	17/04/19	Drawn By	CP	Checked	RM
Scale	1:25 @ A1	1:50 @ A3	Status	Planning	

Project Ref	17007	Drawing Ref	17007-P007	Revision	A
-------------	-------	-------------	------------	----------	---



1 Proposed Section - External Platform Lift

1:25 @ A1



Scale 1:25 @ A1

General notes

This drawing is copyright of KSR Architects. This drawing must be read in conjunction with the Designer's Risk Assessment, specification and all other relevant documentation and drawings. KSR Architects accept no liability for any expense, loss or damage of whatsoever nature and however arising from any variation made to this drawing or in the execution of the work to which it relates which has not been referred to them and their approval obtained. Do not scale from this drawing or the original data only figured dimensions are to be used. For planning refer to their scale. Check all dimensions on site prior to carrying out any work to achieve any discrepancy.

Notes/Legends

B	Planning Application	18/04/19
A	Planning Application	18/04/19

Rev	Description	Date	Drawn
-----	-------------	------	-------

© KSR Architects

STANNAH

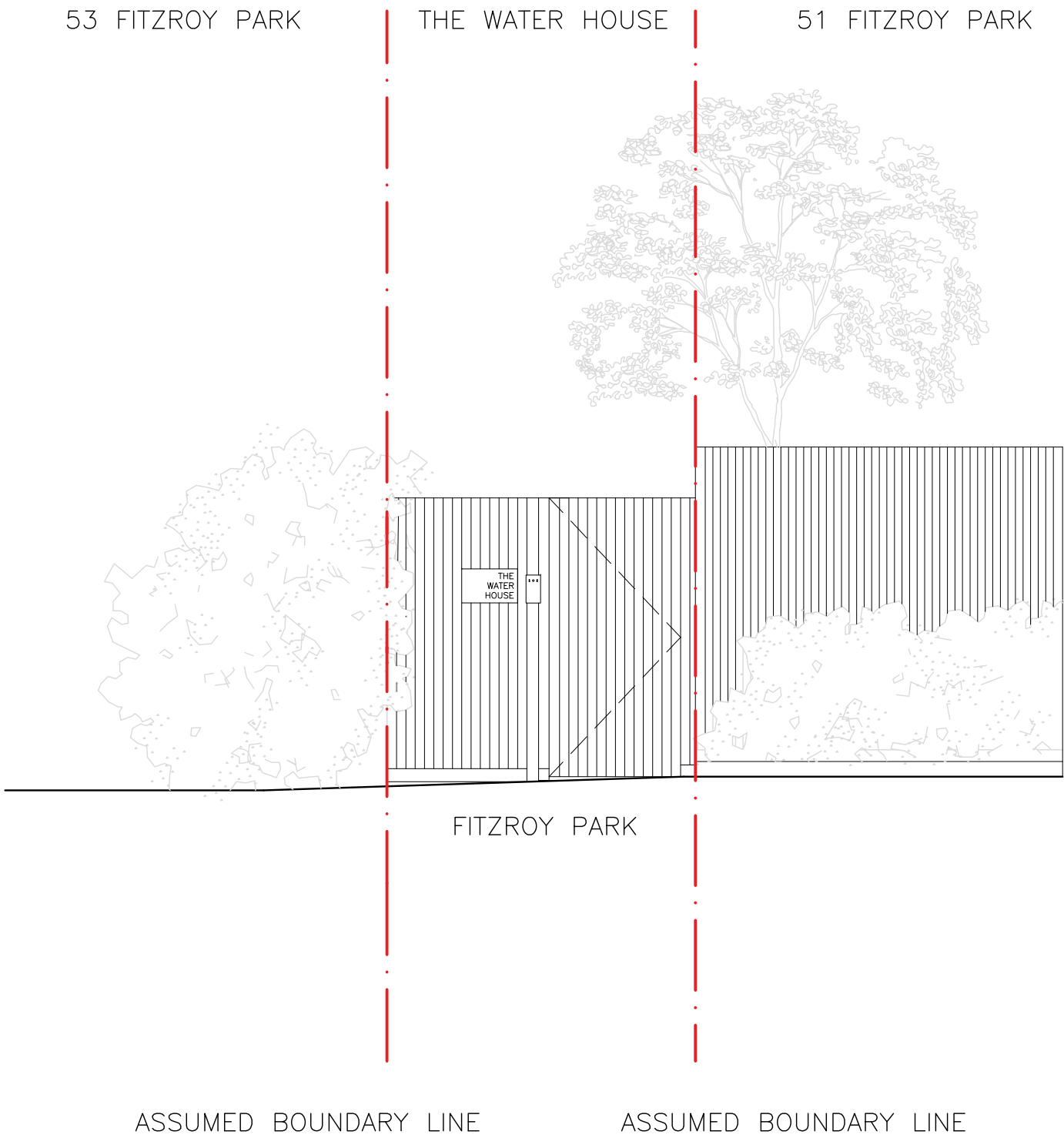
PLANNING

Key Plan

**KSRARCHITECTS**  
KSR Architects LLP  
14 Greenfield Street  
London W1T 0AG  
info@ksrarchitects.com  
t +44 (0)20 7852 6000  
www.ksrarchitects.com

Project  
**THE WATER HOUSE**

18/04/19  
Drawn: BJC CP  
Checked: RM  
Status: Planning  
Project Ref: 17007  
Drawing Ref: 17007-P008  
Revision: B



General notes:  
This drawing is copyright of KSR architects. This drawing must be read in conjunction with the Designer's Risk Assessment, specification and all other relevant documentation and drawings. KSR architects accept no liability for any expense, loss or damage of whatsoever nature and however arising from any variation made to this drawing or in the execution of the work to which it relates which has not been referred to them and their approval obtained.  
Do not scale from this drawing or the digital data, only figured dimensions are to be used, for Planning refer to linear scale. Check all dimensions on site prior to carrying out any works - advise any discrepancy

Notes/Legends

A Planning Application 18/04/19

Rev	Description	Date	Drawn
-----	-------------	------	-------

© KSR architects

18/04/19

PLANNING

Key Plan

**KSRARCHITECTS**  
KSR Architects LLP  
14 Greenhead Street  
London W11 1AQ  
t +44 (0)20 7682 6000  
e mail@ksrarchitects.com  
www.ksrarchitects.com

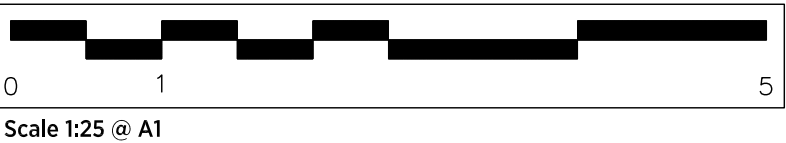
Project  
**THE WATER HOUSE**

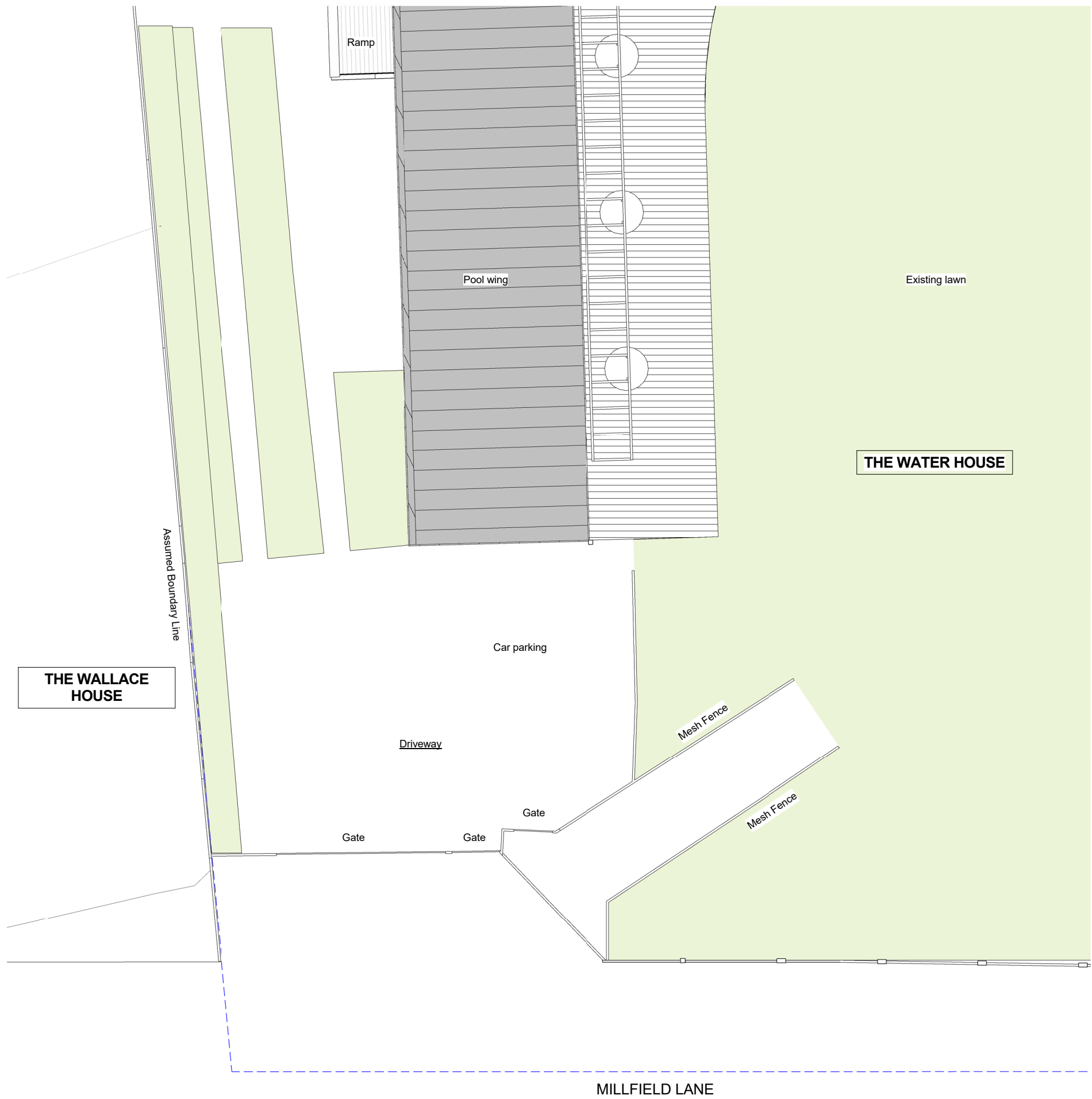
Title:  
**Proposed Elevation - External Platform Lift**

Date:	17/04/19	Drawn By:	CP	Checked:	RM
-------	----------	-----------	----	----------	----

Scale:	125 @ A1 - 150 @ A3	Status:	Planning
--------	---------------------	---------	----------

Project Ref:	17007	Drawing Ref:	17007-P009	Revision:	A
--------------	-------	--------------	------------	-----------	---





General notes:  
This drawing is copyright of KSR architects. This drawing must be read in conjunction with the Designer's Risk Assessment, specification and all other relevant documentation and drawings. KSR architects accept no liability for any expense, loss or damage of whatsoever nature and however arising from any variation made to this drawing or in the execution of the work to which it relates which has not been referred to them and their approval obtained.  
Do not scale from this drawing or the digital data, only figured dimensions are to be used. For Planning refer to linear scale. Check all dimensions on site prior to carrying out any works - advise any discrepancy

Notes/Legends

B	Revised Planning Application	24/07/2019
A	Planning Application	18/04/2019

Rev	Description	Date	Chd
-----	-------------	------	-----

© KSR architects

Stamp

PLANNING

Key Plan



**KSRARCHITECTS**  
KSR Architects LLP  
14 Grosvenor Street  
London W1W 0HD  
t +44 (0)20 7882 5000  
info@ksrarchitects.com  
www.ksrarchitects.com

Project:  
**THE WATER HOUSE**

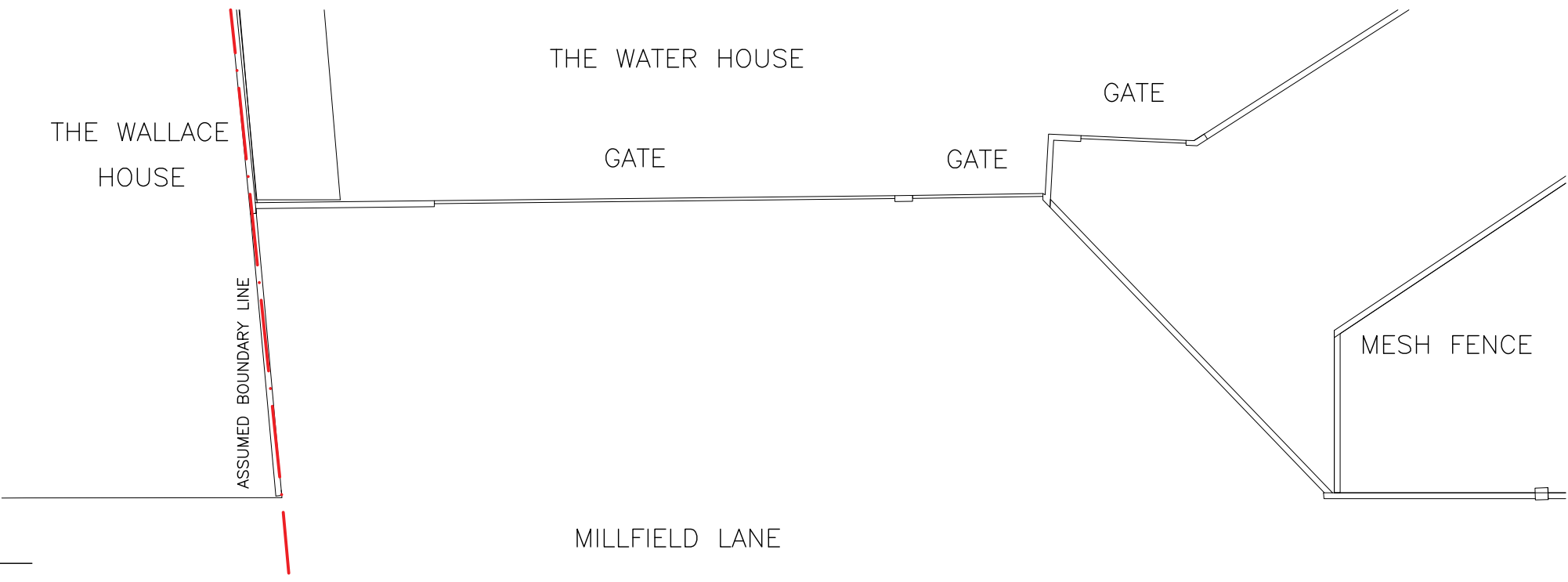
Title:  
**Existing Main Entrance Plan -  
Millfield Lane**

Date:	18/04/19	Drawn By:	CP	Checked:	RM
-------	----------	-----------	----	----------	----

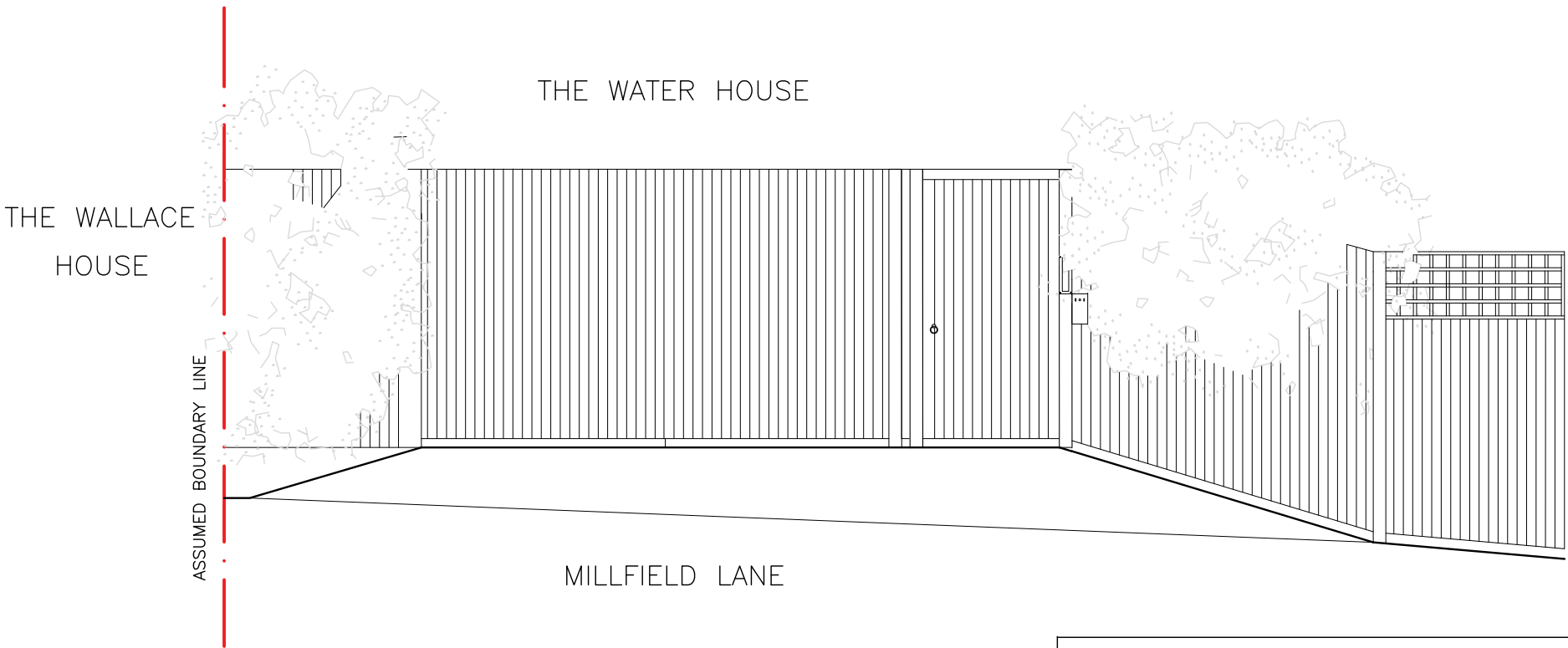
Scale:	1:50 (B4)	Status:	
--------	-----------	---------	--

Project Ref:	Drawing No:	Revision:
17007	17007-P010	B

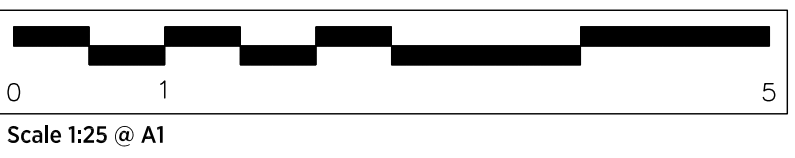




1 Existing Entrance Gate - Plan.  
1:25 @ A1



2 Existing Main Entrance - Elevation.  
1:25 @ A1



General notes:  
This drawing is copyright of KSR architects. This drawing must be read in conjunction with the Designer's Risk Assessment, specification and all other relevant documentation and drawings. KSR architects accept no liability for any expense, loss or damage of whatsoever nature and however arising from any variation made to this drawing or in the execution of the work to which it relates which has not been referred to them and their approval obtained.  
Do not scale from this drawing or the digital data, only figured dimensions are to be used, for Planning refer to linear scale. Check all dimensions on site prior to carrying out any works - advise any discrepancy

Notes/Legends

B	Revised Planning Application	24/07/19
A	Planning Application	18/04/19

Rev	Description	Date	Drawn
-----	-------------	------	-------

© KSR architects

## PLANNING

Key Plan

**KSRARCHITECTS**  
KSR Architects LLP  
14 Greenleaf Street  
London W1T 0AG  
Email: info@ksrarchitects.com  
Tel: +44 (0)20 7682 6000  
www.ksrarchitects.com

Project  
**THE WATER HOUSE**

Title  
**Existing Elevation -  
Millfield Lane Entrance**

Date	17/04/19	Drawn By	CP	Checked	RM
Scale	1:25 @ A1	1:50 @ A3	Status	Planning	

Project Ref	17007	Drawing Ref	17007-P011	Revision	B
-------------	-------	-------------	------------	----------	---

