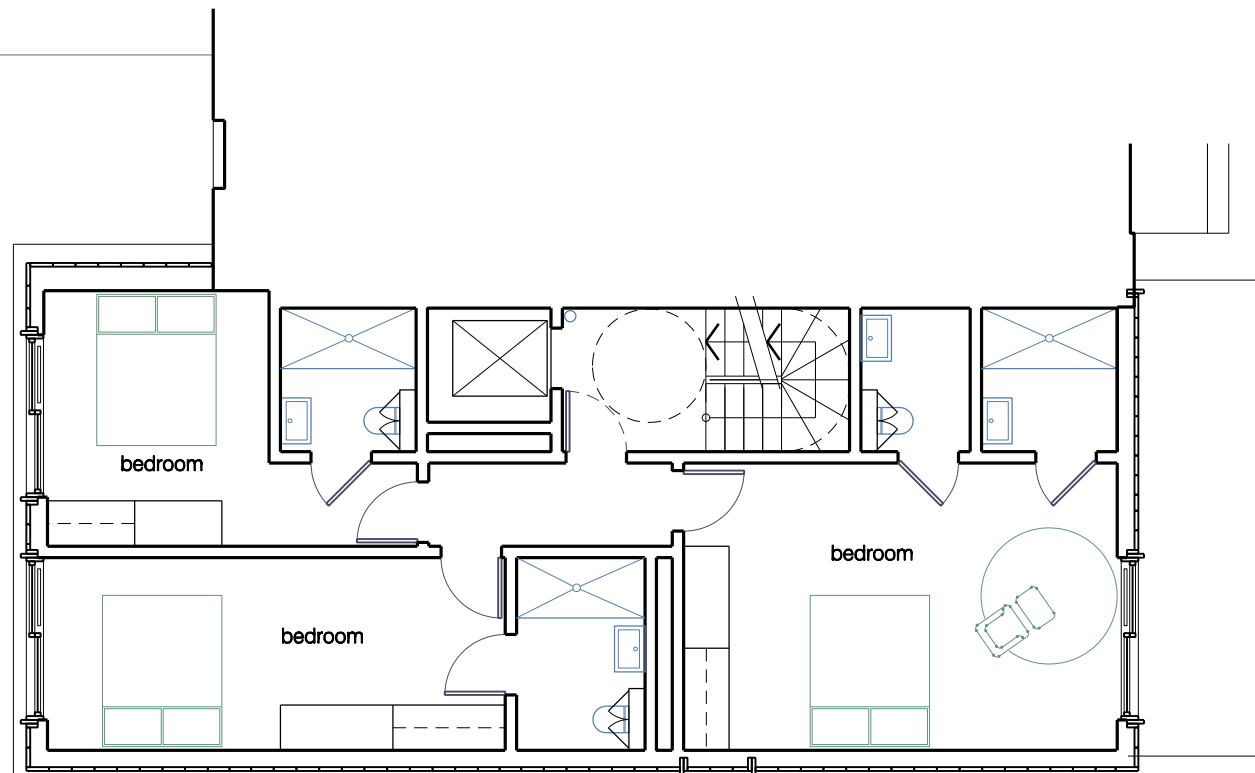


roof plan



seventh floor

Rev	Notes	Date
-	issued for planning	27.03.15
A	issued for planning amendment	16.03.16

accommodation schedule:

lower ground - 1 bedroom

ground floor - 2 x wheelchair accessible bedrooms + 1 bedroom

1st floor - 3 x bedroom (front) + 2 x bedroom (rear)

2nd floor - 4 x bedroom (front)

3rd floor - 4 x bedroom

4th floor - 4 x bedroom

5th floor - 4 x bedroom

6th floor - 3 x bedroom

7th floor - 3 x bedroom

total - 31 bedrooms

- all dimensions are to be checked on site and any discrepancies reported to the architect
- architect to be informed of any additional information required
- do not scale this drawing

PLANNING



WORKS
ARCHITECTURE

16 UPPER MONTAGU STREET
LONDON W1H 2AN
020 7224 8750
WWW.WORKSARCHITECTURE.COM

Project: 84 hatton garden

Title: As Approved floor plans

Date: 16.03.16	Drawn: js	Scale: 1:100@a3 1:50@a1	Drawing Number: pl 105	Revision: A
----------------	-----------	----------------------------	------------------------	-------------