

Arboricultural Impacts: Summary
(For details, see below)

Impact	No. of Trees
Trees to be removed	0
Trees to be pruned	3

Trees to be pruned

No.	Species	Works
2-4	Common lime	Reduce the height of all three trees to 10m from ground level and reduce lateral spread accordingly. For full discussion see attached report.

Pruning is to be undertaken in accordance with the British Standard Recommendations for Tree work, BS3998: 2010. Climbing irons or spikes are not to be used whilst pruning trees.

Pruning is to be undertaken in accordance with the British Standard Recommendations for Tree work, BS3998: 2010. Climbing irons or spikes are not to be used whilst pruning trees.

Pruning will be undertaken according to the principles of good arboricultural practice as stated in Arboriculture Research Note ARN 48 'A Definition of the Best Pruning Position' (AAIS, 1983). When removing branches, care will be taken to cut back to the branch bark collar or ridge so as not to leave a stub that could provide a food base for decay fungi; yet not to cut into or beyond this collar or ridge. Where limbs or branches are to be shortened they will be cut back cleanly to a vigorous side branch, leaving the branch bark ridge and collar intact. At their point of origin, retained side branches intended to form the new dominant shoot shall be at least 30% of the diameter of the parent branch at the pruning point.

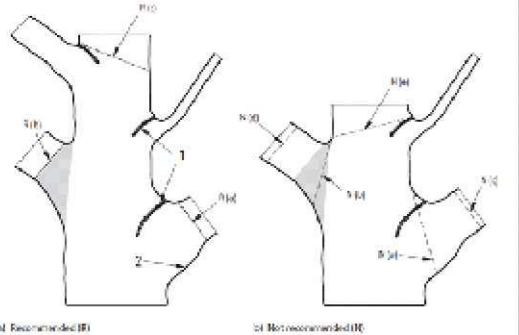
Pruning

Pruning shall be undertaken following the principles of good arboricultural practice as stated in British Standard BS 3998: 2010. The positions of final pruning cuts will comply with Figure 2 'Positions of final cuts' at p23 of this document, as shown below.

Where aerial growth is to be removed, great care shall be taken not to leave a stub which may provide a food base for both fresh wound parasites and decay fungi.

Where a limb, branch or leader is to be shortened it shall be cut back cleanly to a vigorous side branch leaving the branch bark ridge and branch collar intact. Retained side branches intended to form the new dominant shoot shall be at least 30% of the diameter of the parent branch at the pruning point. Injury to the wood and bark of the parent stem or branch above the cut will also be avoided.

The contractor shall relate the position of any individual final pruning cut to the form of the canopy as a whole, so that upon completion of the work the tree has as natural an appearance (for the species) as constraints allow.



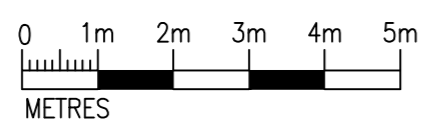
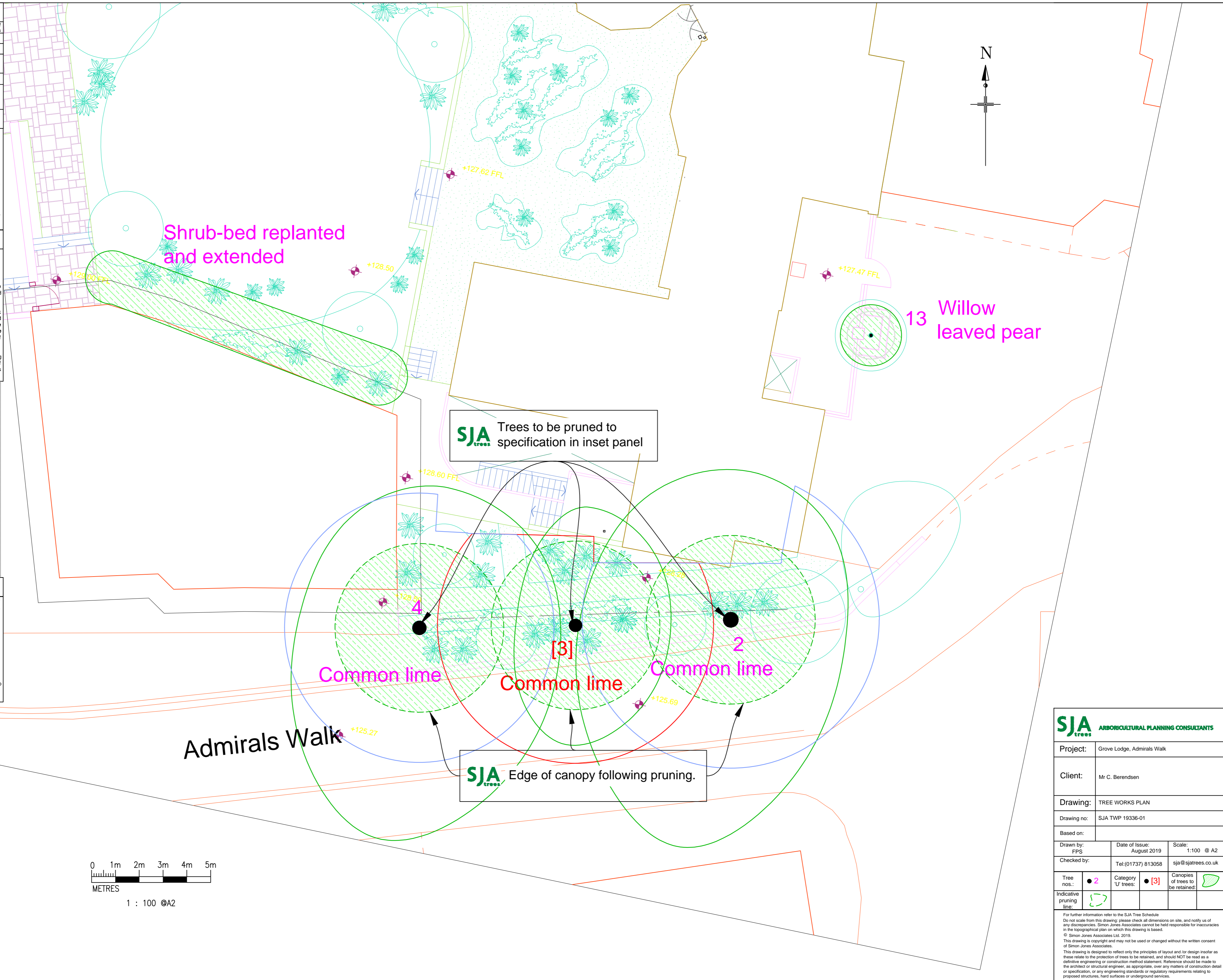
- R: Recommended (R)
- NR: Not recommended (NR)
- 1: Branch bark ridge
- 2: Branch collar
- 3: Retained side branch
- 4: Retained side branch
- 5: Retained side branch
- 6: Retained side branch
- 7: Retained side branch
- 8: Retained side branch
- 9: Retained side branch
- 10: Retained side branch
- 11: Retained side branch
- 12: Retained side branch
- 13: Retained side branch
- 14: Retained side branch
- 15: Retained side branch
- 16: Retained side branch
- 17: Retained side branch
- 18: Retained side branch
- 19: Retained side branch
- 20: Retained side branch
- 21: Retained side branch
- 22: Retained side branch
- 23: Retained side branch
- 24: Retained side branch
- 25: Retained side branch
- 26: Retained side branch
- 27: Retained side branch
- 28: Retained side branch
- 29: Retained side branch
- 30: Retained side branch
- 31: Retained side branch
- 32: Retained side branch
- 33: Retained side branch
- 34: Retained side branch
- 35: Retained side branch
- 36: Retained side branch
- 37: Retained side branch
- 38: Retained side branch
- 39: Retained side branch
- 40: Retained side branch
- 41: Retained side branch
- 42: Retained side branch
- 43: Retained side branch
- 44: Retained side branch
- 45: Retained side branch
- 46: Retained side branch
- 47: Retained side branch
- 48: Retained side branch
- 49: Retained side branch
- 50: Retained side branch
- 51: Retained side branch
- 52: Retained side branch
- 53: Retained side branch
- 54: Retained side branch
- 55: Retained side branch
- 56: Retained side branch
- 57: Retained side branch
- 58: Retained side branch
- 59: Retained side branch
- 60: Retained side branch
- 61: Retained side branch
- 62: Retained side branch
- 63: Retained side branch
- 64: Retained side branch
- 65: Retained side branch
- 66: Retained side branch
- 67: Retained side branch
- 68: Retained side branch
- 69: Retained side branch
- 70: Retained side branch
- 71: Retained side branch
- 72: Retained side branch
- 73: Retained side branch
- 74: Retained side branch
- 75: Retained side branch
- 76: Retained side branch
- 77: Retained side branch
- 78: Retained side branch
- 79: Retained side branch
- 80: Retained side branch
- 81: Retained side branch
- 82: Retained side branch
- 83: Retained side branch
- 84: Retained side branch
- 85: Retained side branch
- 86: Retained side branch
- 87: Retained side branch
- 88: Retained side branch
- 89: Retained side branch
- 90: Retained side branch
- 91: Retained side branch
- 92: Retained side branch
- 93: Retained side branch
- 94: Retained side branch
- 95: Retained side branch
- 96: Retained side branch
- 97: Retained side branch
- 98: Retained side branch
- 99: Retained side branch
- 100: Retained side branch

Crown Reduction

Crown reduction is defined as the reduction of the outline dimension of the canopy, from the tips of limbs and branches toward the main trunk, by pruning growth to an appropriately sized lateral branch, twig or bud to leave a flowing silhouette.

Reduction may be of the entire crown, or of one part of the crown. The extent of reduction is given in metres.

Where a limb, branch or leader is to be shortened it shall be cut back cleanly to a vigorous side branch leaving the branch bark ridge and branch collar intact. Retained side branches intended to form the new dominant shoot shall be at least 30% of the diameter of the parent branch at the pruning point. The contractor shall relate the position of any individual final pruning cut to the form of the canopy as a whole, so that upon completion of the work the tree has as natural an appearance (for the species) as constraints allow.



1 : 100 @A2

SJA ARBORICULTURAL PLANNING CONSULTANTS

Project: Grove Lodge, Admirals Walk

Client: Mr C. Berendsen

Drawing: TREE WORKS PLAN

Drawing no: SJA TWP 19336-01

Based on:

Drawn by: FPS Date of Issue: August 2019 Scale: 1:100 @ A2

Checked by: Tel: (01737) 813058 sja@sjatrees.co.uk

Tree nos.:	● 2	Category 'U' trees:	● [3]	Canopies of trees to be retained:	
Indicative pruning lines:					

For further information refer to the SJA Tree Schedule. Do not scale from this drawing; please check all dimensions on site, and notify us of any discrepancies. Simon Jones Associates cannot be held responsible for inaccuracies in the topographical plan on which this drawing is based. © Simon Jones Associates Ltd. 2019. This drawing is copyright and may not be used or changed without the written consent of Simon Jones Associates. This drawing is designed to reflect only the principles of layout and/or design insofar as these relate to the protection of trees to be retained, and should NOT be read as a definitive engineering or construction method statement. Reference should be made to the architect or structural engineer, as appropriate, over any matters of construction detail or specification, or any engineering standards or regulatory requirements relating to proposed structures, hard surfaces or underground services.