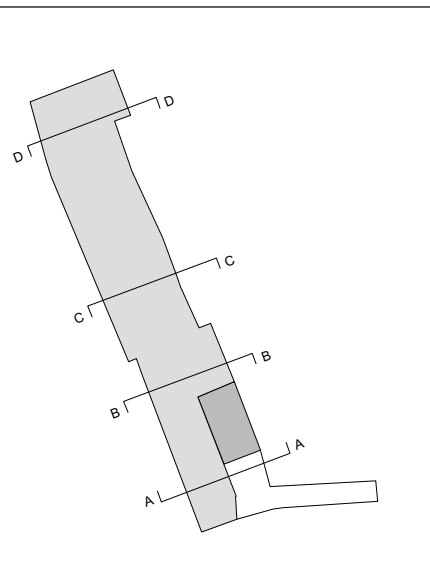


General Key:

Existing Building
Proposed

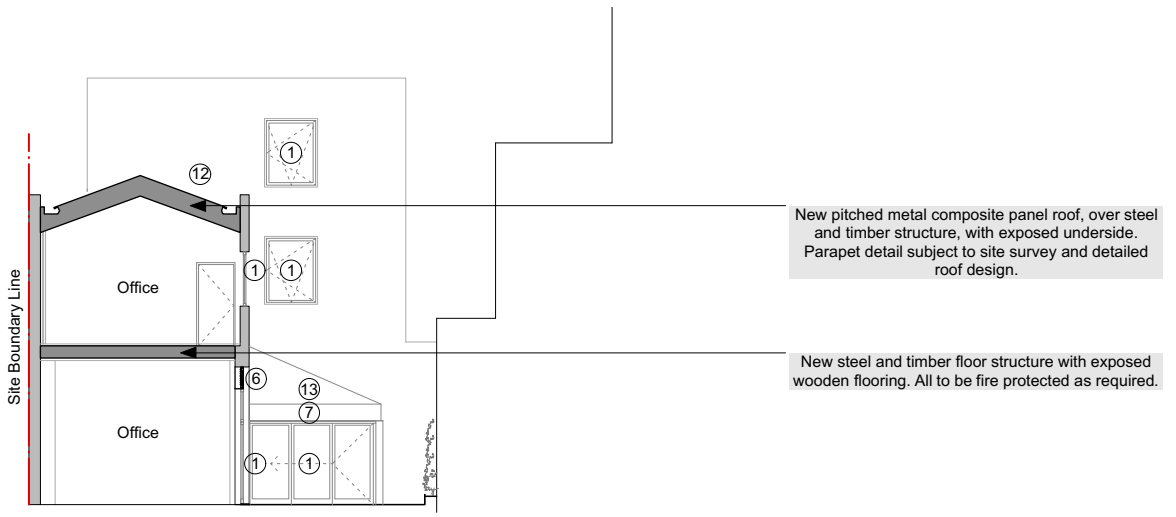
- Material Key:**
- Aluminium window / glazed external door, PPC finish RAL 9004 Signal Black
 - Window to match existing, finish RAL 9004 Signal Black
 - Window to match existing, finish RAL 9004 Signal Black
 - Aluminium rooflights, PPC finish RAL 9004 Signal Black
 - Aluminium door-set to entrance, refuse store and external plant, PPC finish RAL 9004 Signal Black
 - Aluminium weather louvres, PPC finish RAL 9004 Signal Black
 - Black waterproofing membrane cladding
 - White painted brick
 - Black painted brick, RAL 9004 Signal Black
 - New access gate with separate pedestrian entrance, PPC signage and retained existing frame
 - New steel gate painted, RAL 9004 Signal Black
 - Composite panel roof system
 - Insulated roof system with exposed waterproofing membrane
 - Insulated roof system with exposed metal sheet
 - Metal balustrade - juliet balcony, PPC finish RAL 9004 Signal Black



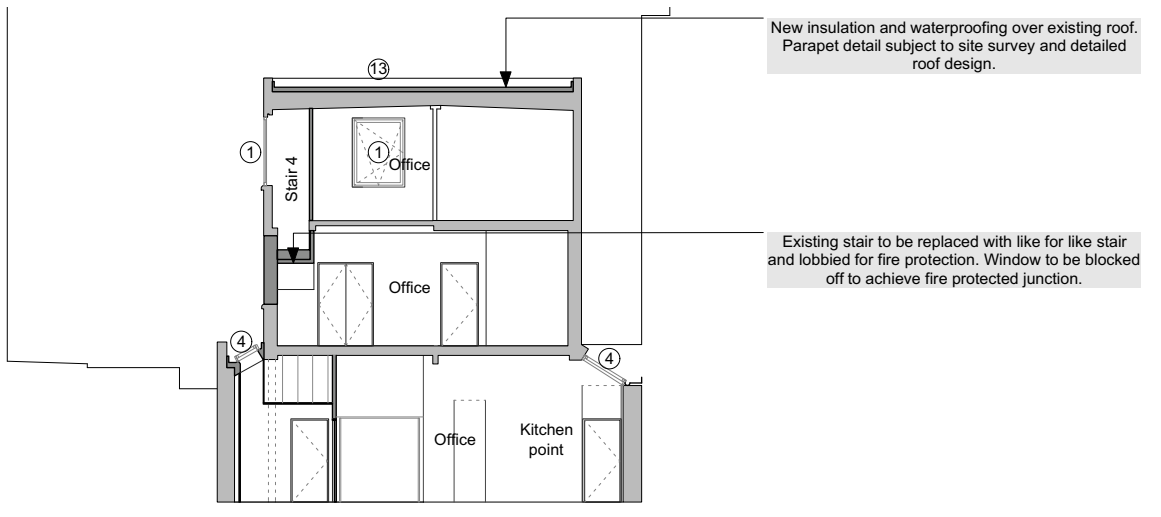
Copyright pH+
 No implied licence exists. This drawing should not be used to calculate areas for the purpose of valuation. Do not scale this drawing. All dimensions to be checked on site by the contractor and such dimensions to be their responsibility. All work must comply with relevant British Standards and Building Regulations requirements. Drawing errors and omissions to be reported to the architect.

Revisions

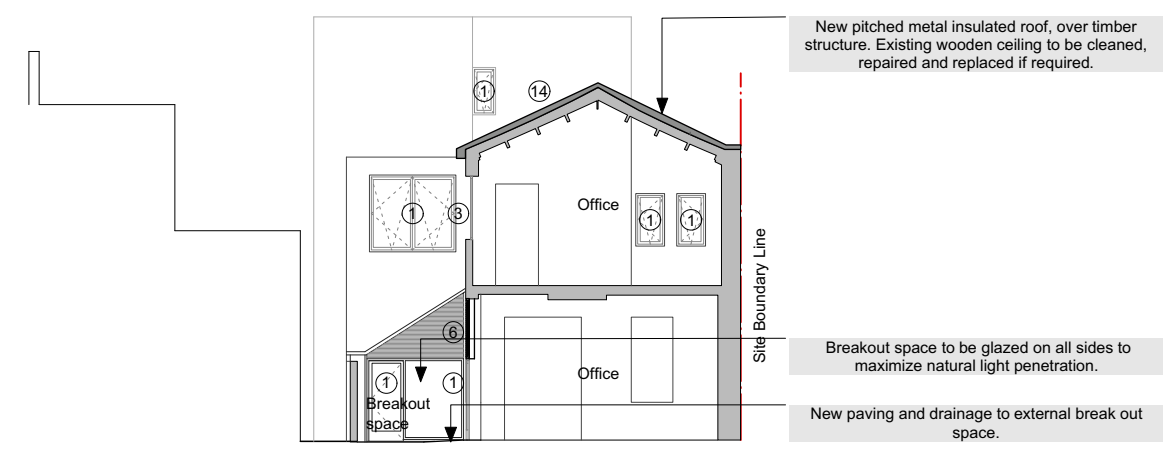
Rev.	By	Date	Description
/	LG	14/03/19	Planning issue
A	CP	15/08/19	Revised planning issue



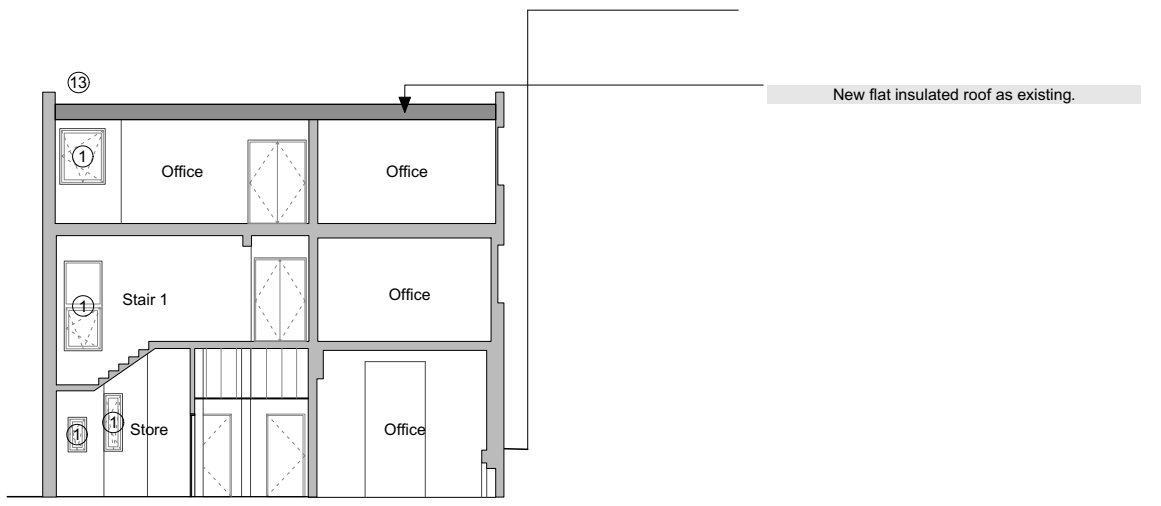
1 Section AA



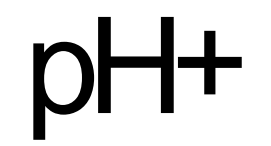
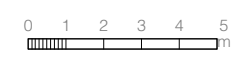
2 Section BB



3 Section CC



4 Section DD



Puncher Hamilton Plus Ltd
 Albion Mills, 3rd Floor
 18 East Tenter Street
 London E1 8DN
 t : +44 (0)20 7613 1965
 e : mail@phplusarchitects.com
 w : www.phplusarchitects.com

Project Title
 Symes Works
Project Address
 15a - 37 Camden High Street
 London NW1 7JE

Drawing Name
 Proposed
 Sections AA - BB - CC - DD

Status
 PLANNING

Scale
 A3 1:200
 A1

Proj. No. 861
Area - X
Dwg. No. 0300
Type - GA
Rev - A