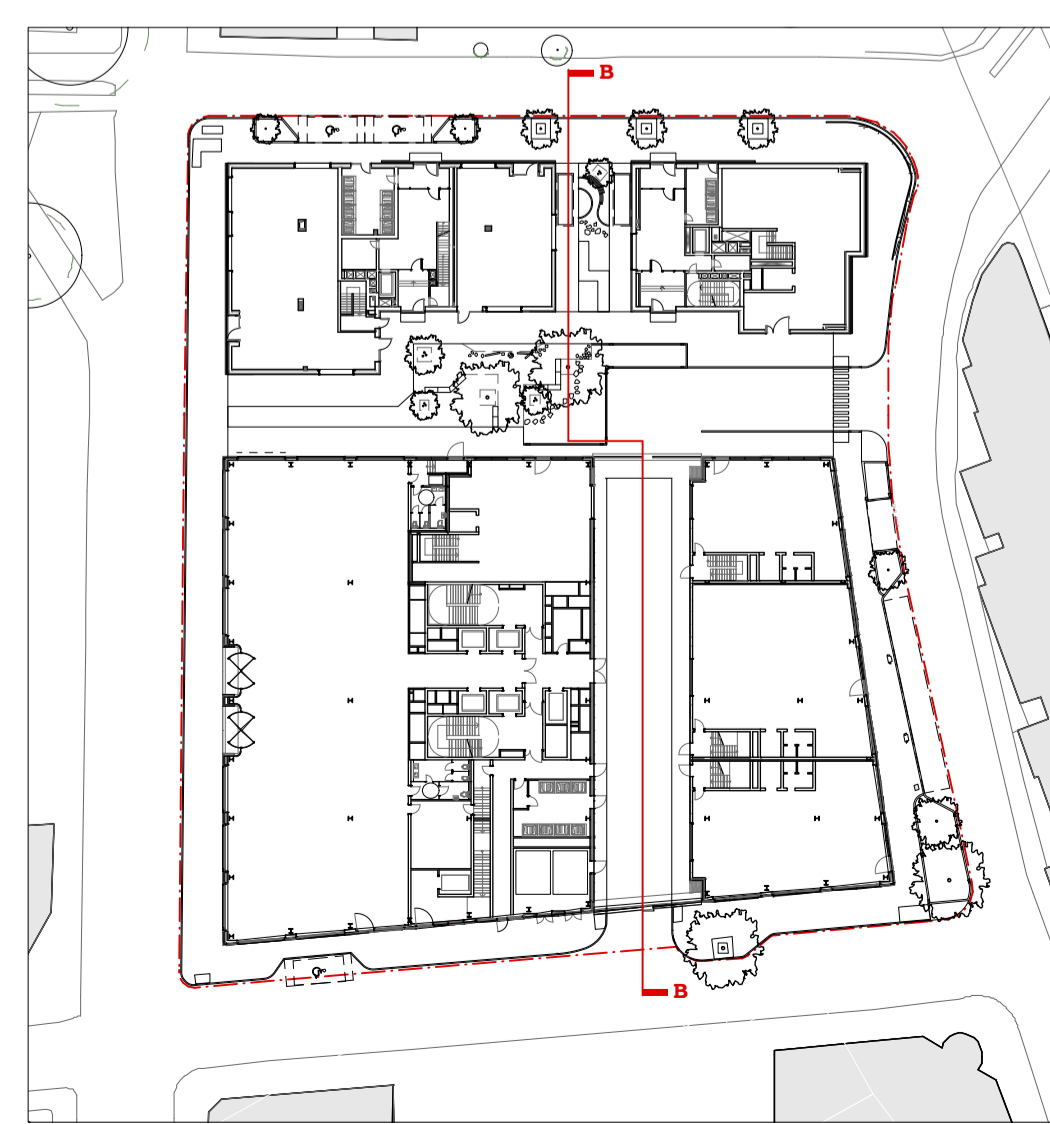


Georgiana Street | Footway, with new tree planting and cycle stands | Public space and internal street | Service route through office building | Footway, with new tree planting | Pratt Street



Notes:

- Refer to landscape overview plans SP108_01_CP
- Refer to Architect's drawings for all building information

| Rev | Date | Description |
|-----|----------|---------------------|
| P1 | 05.08.19 | Issued for planning |

JCLA
Jonathan Cook Landscape Architects Ltd
3A Iliffe Yard
LONDON SE17 3QA
Tel +44 (0)207 703 3270
www.jcla.co.uk

| | |
|---|----------------------------------|
| Client W.RE | |
| Project SP108: St Pancras Commercial centre | |
| Drawing Title Proposed landscape section B-B | |
| Drawing Status Planning | |
| Date 05.08.19 | Scale 1:100 @ A1 / 1:200 @ A3 |
| Drawing Number SP108_52_BB | Revision P1 |

© JCLA
Do not scale from this drawing. Any discrepancies or queries should be brought to the attention of the authors. Dimensions are to be verified on site prior to construction.
To be read in conjunction with all relevant Architects', Services and Structural Engineers' drawings.
All existing site, tree and building information has been compiled from different sources.
Refer to current revisions of all referenced files.