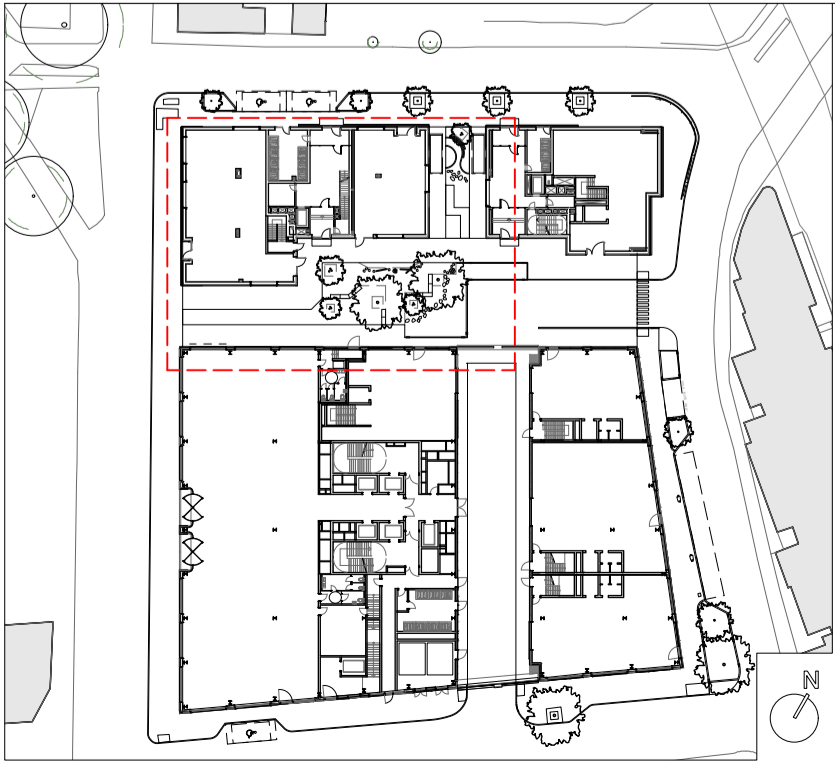


**Key:**

- Proposed trees; refer to annotations for species/ sizes
- Textural grass planting (2L CG, 7/m2)**
  - Robust, clump forming grasses
  - Varying heights and colours
  - Evergreen base species, plus deciduous highlights eg. Anemanthele lessoniana, Carex flacca, Deschampsia cespitosa, Luzula nivea
- Tree understorey planting (2L CG, 7/m2)**
  - Drought tolerant grasses with flowering highlights
  - Winter / Spring bulbs eg. Anemone x hybrida 'Honorine Jobert', Aster divaricatus, Luzula nivea, Galanthus nivalis / Cyclamen hederifolium
- Mid-height planting matrix (2L CG, 7/m2)**
  - Naturalistic mix of mid-height perennials and small shrubs
  - Textural base layer of grasses & evergreens
  - Flowering plants with arching flowerheads eg. Epimedium grandiflorum, Digitalis purpurea, Galium odoratum, Geranium sp., Luzula nivea
- Playful planting matrix (2L CG, 7/m2)**
  - Naturalistic mix of mid-height perennials and small shrubs
  - Textural base layer of grasses & evergreens
  - Flowering plants with arching flowerheads
  - More emphasis on colour and scent within brighter parts of garedn around play elements eg. Aster cordifolia 'Little Carlow', Geranium sp., Luzula nivea, Persicaria amplexicaulis 'Firetail', Silene dioica
- Shelter / edge planting (Perennials: 2L CG, Shrubs: 10L CG, 7/m2)**
  - Naturalistic mix of mid-height perennials, bushes and taller shrubs
  - Textural base layer of grasses & evergreens
  - Flowering plants with arching flowerheads
  - Larger shrubs providing shelter and increased biodiversity value (approx. 30% of planting type area) eg. Aralia cordata, Asplenium scolopendrium, Eunonymous europaeus, Galium odoratum, Polypodium vulgare, Sarcococca confusa
- Bulbs**
  - Clusters of bulbs bring seasonal interest throughout the year, from winter to summer eg. Cyclamen hederifolium, Galanthus nivalis, Narcissus poeticus var. recurvus, Fritillaria meleagris, Nectarocordum siculum

**Growing medium for shrub/herbaceous/grass mix planting:**

- 300mm depth Multi-purpose topsoil to BS 3882:2015; 10% by volume organic compost (PAS 100) incorporated, plus organic seaweed soil improver to manufacturer's recommendations (Eg. Seafeed seaweed meal, [www.quickcrop.co.uk](http://www.quickcrop.co.uk), or equal approved), plus buried gel irrigation granules (Eg. Brodleaf P4 water retention granules).
- Mulch with 50mm depth of bark mulch (Eg. Melcourt Spruce ornamental, 5-35mm, or equal approved).
- Drainage to planting areas to be provided over basement construction.



Notes:

- Refer to separate Tree Survey by Tim Moya Associates (March 2019).

- Tree protection and RPA information taken from Tree Survey

Rev

Date

Description

P1

05.08.19

Issued for planning

JCLA

Jonathan Cook Landscape Architects Ltd

3A Tliffe Yard

LONDON SE17 3QA

Tel +44 (0)207 703 3270

www.jcla.co.uk

© JCLA

Do not scale from this drawing. Any discrepancies or queries should be brought to the attention of the authors. Dimensions are to be verified on site prior to construction.

To be read in conjunction with all relevant Architects', Services and Structural Engineers' drawings.

All existing site, tree and building information has been compiled from different sources.

Refer to current revisions of all referenced files.

Client

W.RE

Project

SP108: St Pancras Commercial centre

Drawing Title

Proposed planting plan:  
Public space

Drawing Status

Planning

Date

05.08.19

Scale

1:75 @ A1 / 1:150 @ A3

Drawing Number

SP108\_31\_PP

Revision

P1