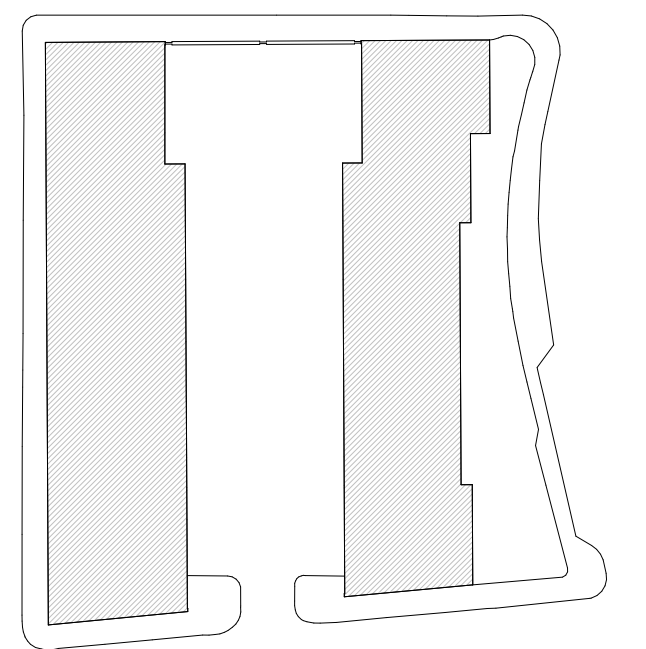


INDEX	DATE	REASON FOR ISSUE	NAME

Caruso St John Architects 0 1 2 3 4 5m



477 St Pancras Commercial Centre

Existing Mezzanine PLANNING

477	CSJ	00	M1	FP	A	0101	S1	P01
Project	Author	Year	Level	Type	Discipline	Room	Storey	Section

1:100	841 x 1189	06/08/2019	06/08/2019	JH	RH
Scale	Sheet x Overall	Date	Revised	Drawn	Checked

STAGE 02 ±0.00 = 0.00 AOD

Client:
WRE
25 Shadwell Pl, Mayfair, London W1J 8NF

Project manager:
Blackburn & Co.
No 1, Clerk Street, London, SE1 9GG

Architect:
Caruso St John Architects LLP
1 Coote Street, London E2 8AG, UK, +44 (0)20 7613 3161, london@carusostjohn.com

Planning consultant:
Gerrard Ewo
72 Whitechapel Street, London, W1D 8AY

Structural engineer:
AKT II
White Cedar Factory 1 Old Street Yard London EC1Y 8AT

Building services:
Norman Davey Young
4 Chiswell Street, London EC1Y 4BP, United Kingdom

Quantity surveyor:
Expere
Morelands 5-23 Old Street London EC1Y 9PL

Copyright © Caruso St John Architects LLP. All rights reserved. No part of this publication may be reproduced, stored in a retrieval system, or transmitted, in any form or by any means, without the prior written permission of Caruso St John Architects LLP.