

**Appendix 3:** Proposed Structure Drawings

For details of car park alterations refer to (GA)021

Existing walls removed  
and new steel box  
frames installed.

Existing stair decked over using profiled metal decking supported on steel beams bearing into existing masonry walls.

Existing floor assessed  
and strengthened as  
required

New platform lift and walkway.

## Standard Notes

1. This drawing is to be read in conjunction with all relevant Architect's and Engineer's drawings and the specification.
2. This drawing should not be scaled.
3. All dimensions are to be verified by the contractor on site.
4. All discrepancies should be reported to the C.A. prior to the commencement of the works.

© CIVIC ENGINEERS

## Notes and Keys

NOT FOR  
CONSTRUCTION

14.08.19	P02	Notes updated	GS	SH
15.07.19	P01	Issued as part of a report	GS	SH
Date	Rev	Description	Drawn	Chkd

Project  
WAC Arts, London

Title

Level 2 Proposed Structure

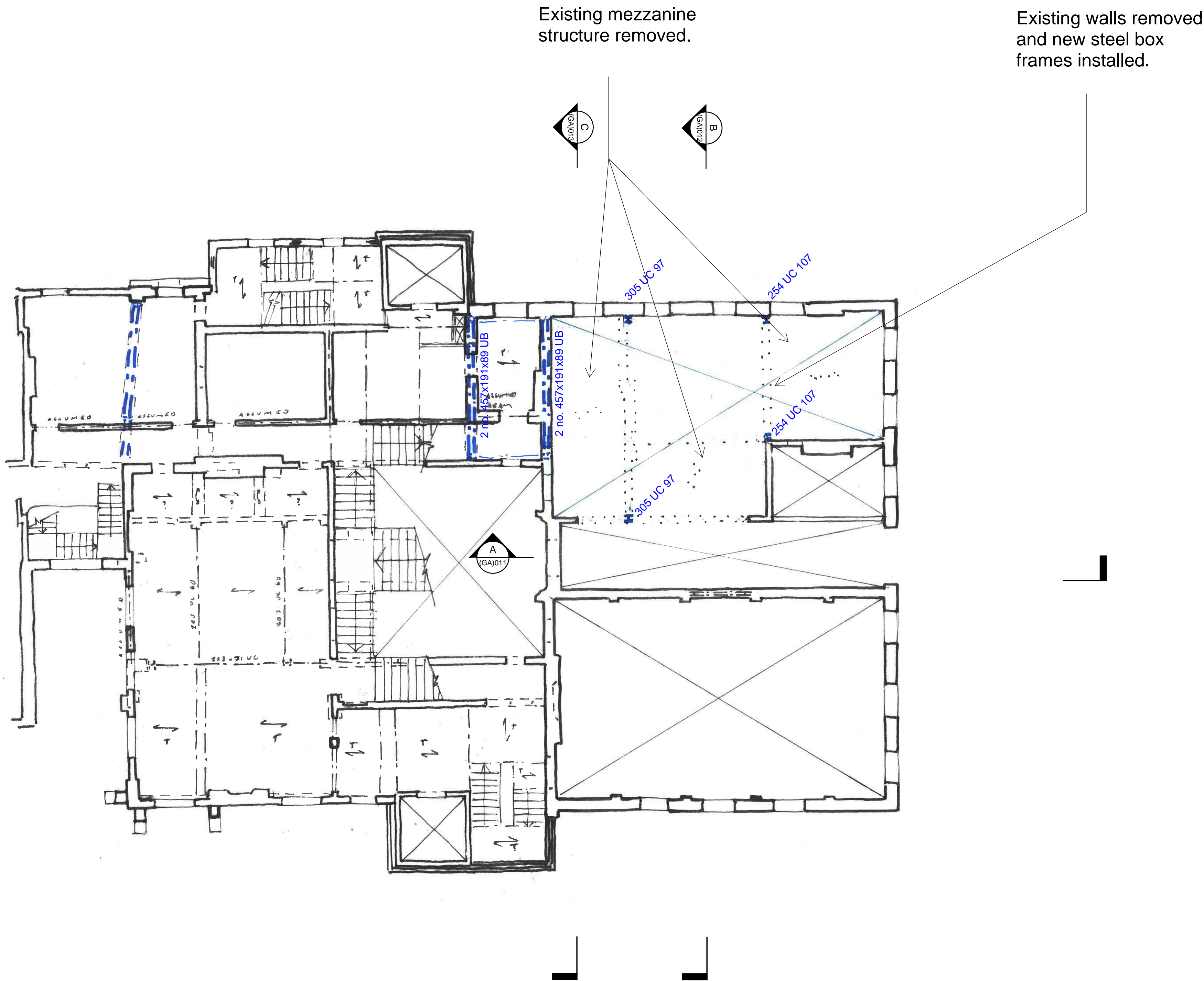
---

Status

## INFORMATION

Scale @ A1 1:200	Date Created JUL '19	Drawn GS	Checked SH
Project Number 1130/01	Drawing Number (GA)002		Revision P02





NOT FOR  
CONSTRUCTION

14.08.19	P02	Notes updated	GS	SH
15.07.19	P01	Issued as part of a report	GS	SH
Date	Rev	Description	Drawn	Chkd



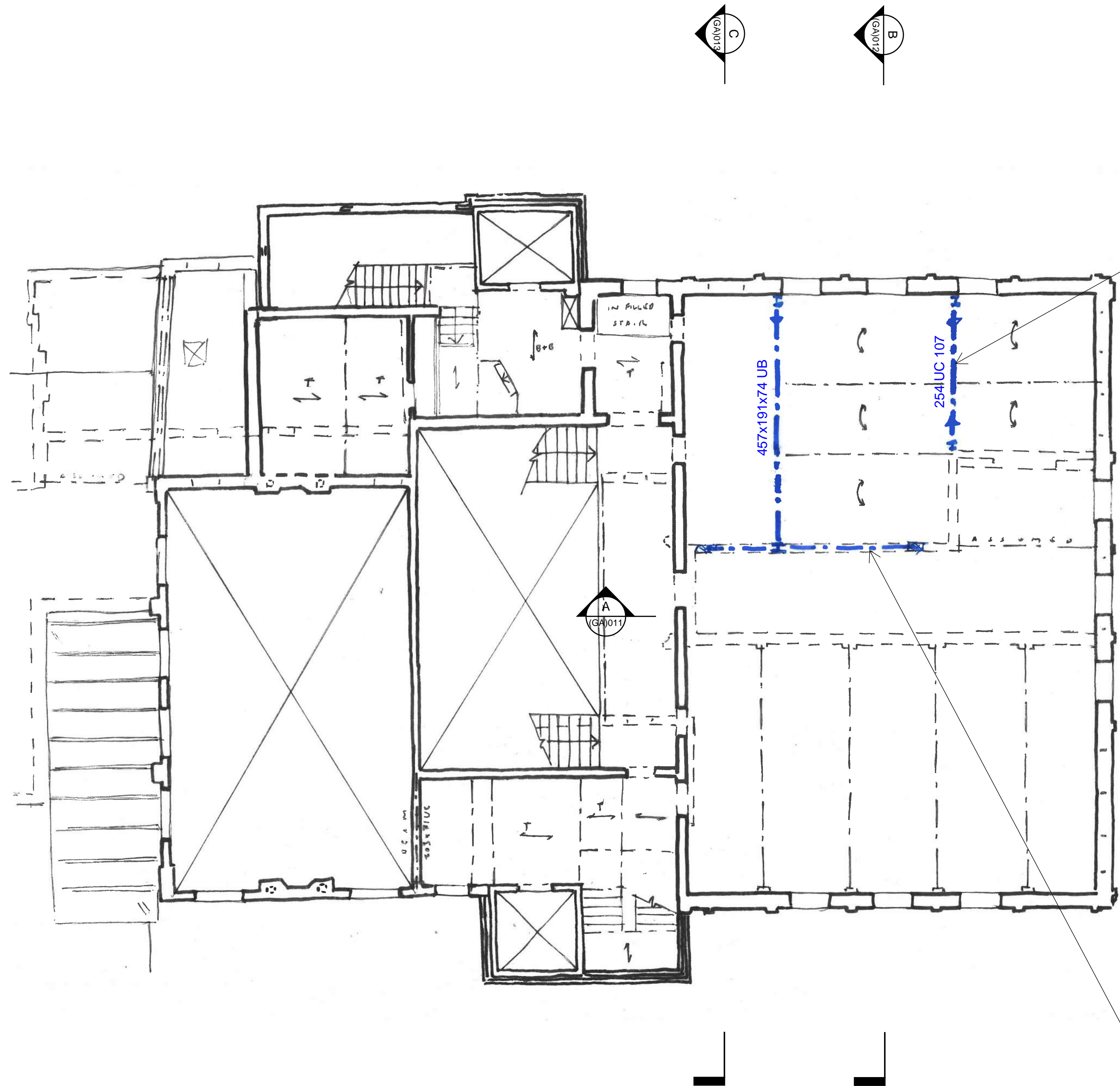
Civic Engineers

MANCHESTER  
LONDON  
LEEDS  
GLASGOW

Carver's Warehouse, 77 Dale Street, Manchester, M1 2HG. Tel: 0161 228 6757  
Reeds Wharf, 33 Mill Street, London SE1 2AX. Tel: 020 7253 2977  
Tower Works, Unit 02-01, Globe Road, Leeds, LS11 5QG. Tel: 0113 3025 130  
Gordham Chambers, 45 West Nile Street, Glasgow, G1 2PT. Tel: 0141 370 1829  
[www.civicengineers.com](http://www.civicengineers.com)

Project			
WAC Arts, London			
Title			
Level 3 Proposed Structure			
Status			
INFORMATION			
Scale @ A1	Date Created	Drawn	Checked
1:200	JUL '19	GS	SH
Project Number	Drawing Number	Revision	
1130/01	(GA)003	P02	





New steel box frames  
support existing floors.

New steel beams and  
columns support wall  
and floors over.

- Standard Notes
1. This drawing is to be read in conjunction with all relevant Architect's and Engineer's drawings and the specification.
  2. This drawing should not be scaled.
  3. All dimensions are to be verified by the contractor on site.
  4. All discrepancies should be reported to the C.A. prior to the commencement of the works.

© CIVICENGINEERS

Notes and Keys

NOT FOR  
CONSTRUCTION

14.08.19	P02	Notes updated	GS	SH
15.07.19	P01	Issued as part of a report	GS	SH
Date	Rev	Description	Drawn	Chkd



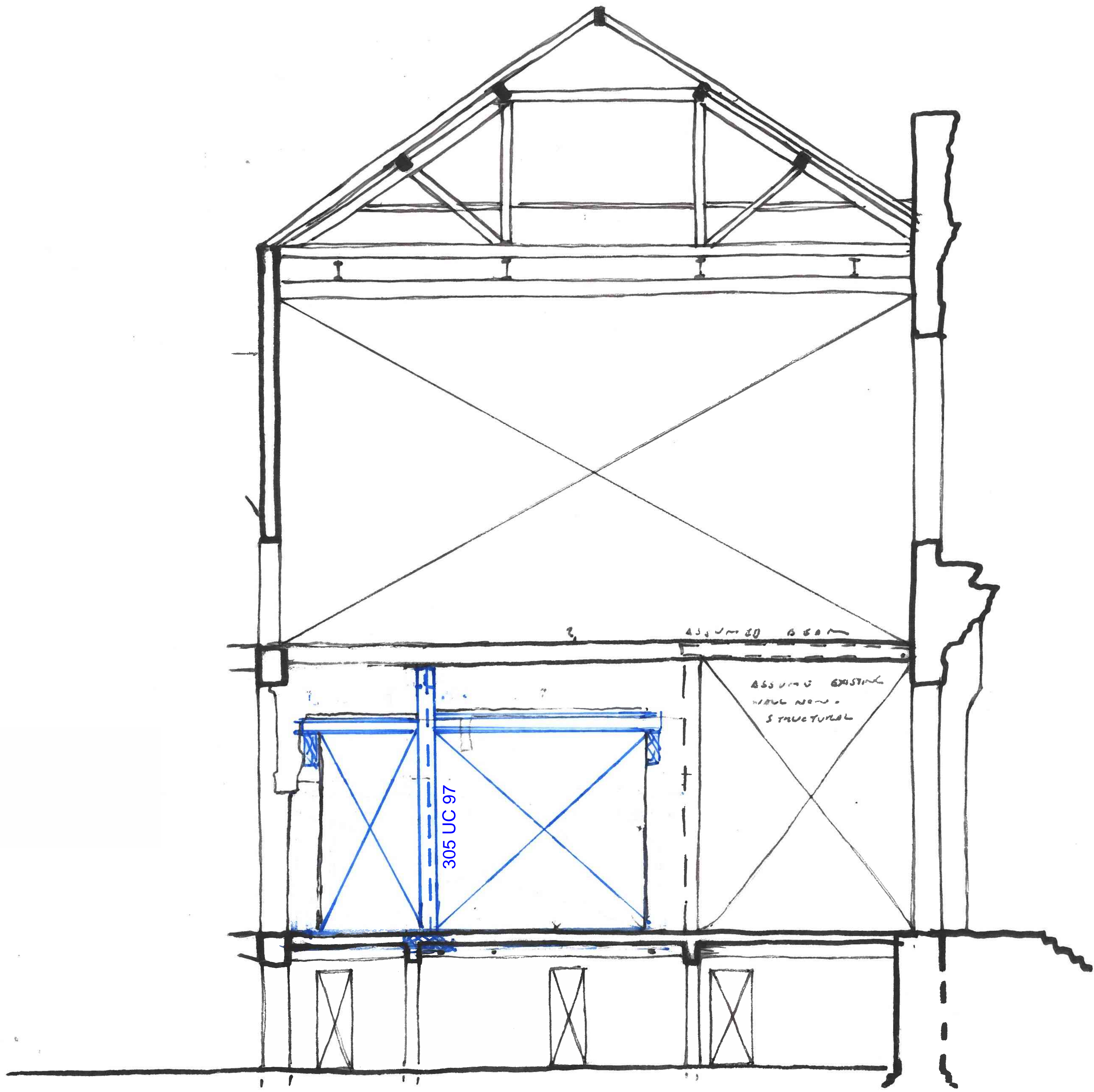
Civic Engineers

MANCHESTER  
LONDON  
LEEDS  
GLASGOW

Carver's Warehouse, 77 Dale Street, Manchester, M1 2HG. Tel: 0161 228 6757  
Reeds Wharf, 33 Mill Street, London SE1 2AX. Tel: 020 7253 2977  
Tower Works, Unit 02-01, Globe Road, Leeds, LS11 5QG. Tel: 0113 3025 130  
Gordham Chambers, 45 West Nile Street, Glasgow, G1 2PT. Tel: 0141 370 1829  
[www.civicingineers.com](http://www.civicingineers.com)

Project			
WAC Arts, London			
Title			
Level 4 Proposed Structure			
Status			
INFORMATION			
Scale @ A1	Date Created	Drawn	Checked
1:200	JUL '19	GS	SH
Project Number	Drawing Number	Revision	
1130/01	(GA)004	P02	





Standard Notes

1. This drawing is to be read in conjunction with all relevant Architect's and Engineer's drawings and the specification.

2. This drawing should not be scaled.

3. All dimensions are to be verified by the contractor on site.

4. All discrepancies should be reported to the C.A. prior to the commencement of the works.

© CIVICENGINEERS

Notes and Keys

NOT FOR CONSTRUCTION

15.07.19	P01	Issued as part of a report	GS	SH
Date	Rev	Description	Drawn	Chkd

C

Civic Engineers

MANCHESTER

LONDON

LEEDS

GLASGOW

Carver's Warehouse, 77 Dale Street, Manchester, M1 2HG. Tel: 0161 228 6757

Reeds Wharf, 33 Mill Street, London SE1 2AX. Tel: 020 7253 2977

Tower Works, Unit 02-01, Globe Road, Leeds, LS11 5QG. Tel: 0113 3025 130

Graham Chambers, 45 West Nile Street, Glasgow, G1 2PT. Tel: 0141 370 1829

www.civicingineers.com

Project

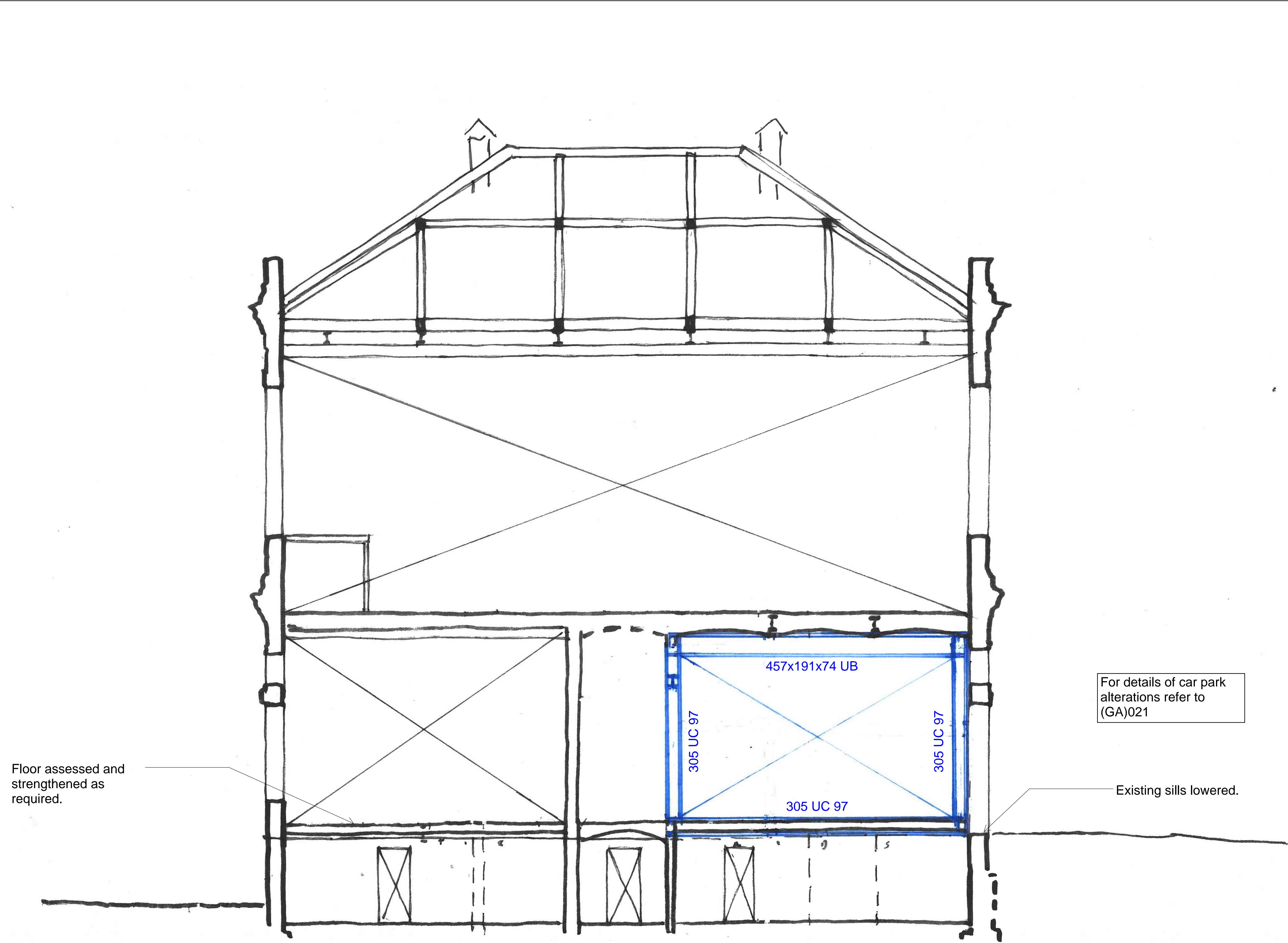
WAC Arts, London

Title

Section A Proposed Structure

INFORMATION			
Scale @ A1	Date Created	Drawn	Checked
1:50	JUL '19	GS	SH
Project Number	Drawing Number	Revision	
1130/01	(GA)011	P01	





Floor assessed and strengthened as required.

For details of car park alterations refer to (GA)021

Existing sills lowered.

- Standard Notes
1. This drawing is to be read in conjunction with all relevant Architect's and Engineer's drawings and the specification.
  2. This drawing should not be scaled.
  3. All dimensions are to be verified by the contractor on site.
  4. All discrepancies should be reported to the C.A. prior to the commencement of the works.

© CIVICENGINEERS

Notes and Keys

NOT FOR CONSTRUCTION

14.08.19	P02	Notes updated	GS	SH
15.07.19	P01	Issued as part of a report	GS	SH
Date	Rev	Description	Drawn	Chkd

**Civic Engineers**

MANCHESTER  
LONDON  
LEEDS  
GLASGOW

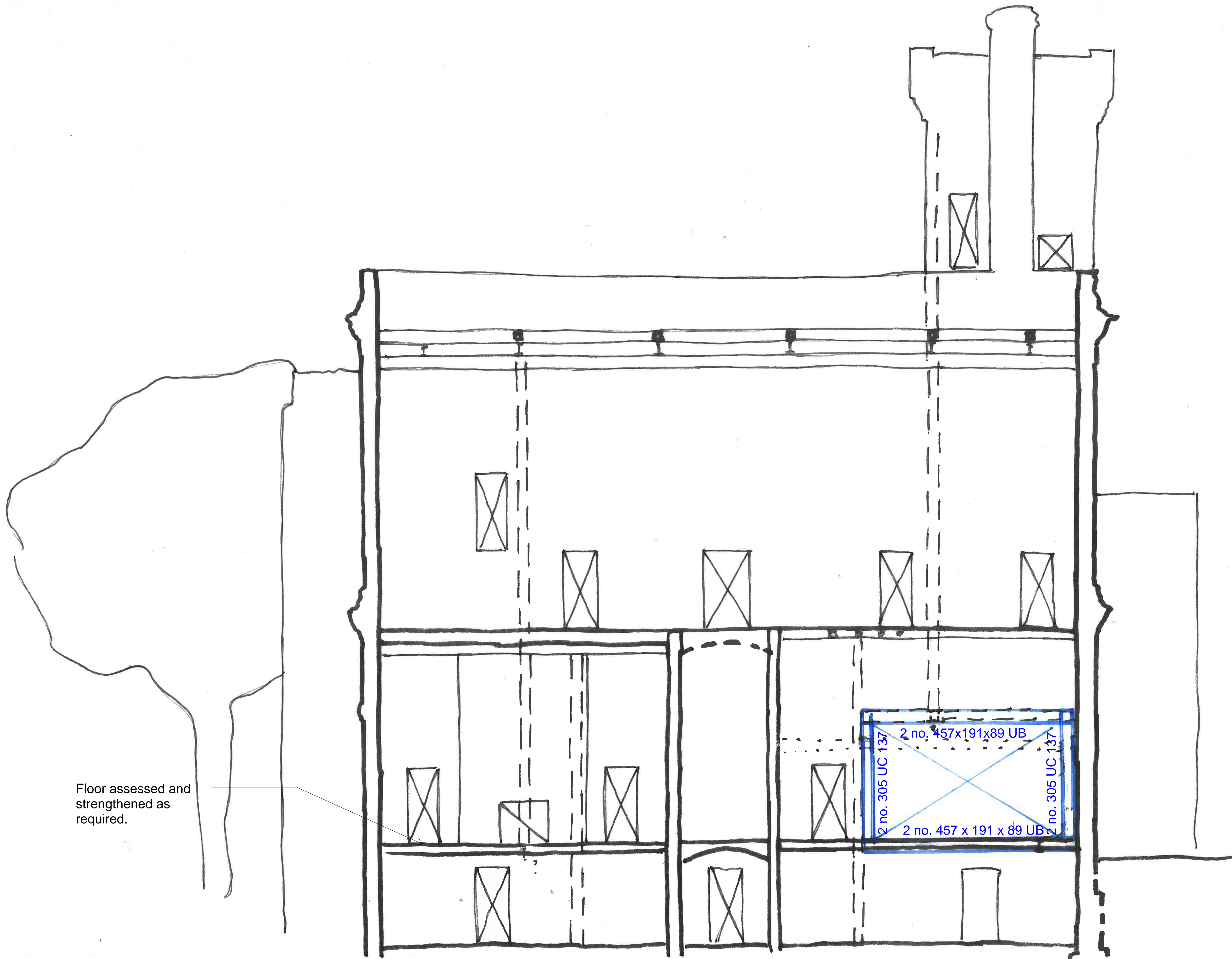
Carver's Warehouse, 77 Dale Street, Manchester, M1 2HG. Tel: 0161 228 6757  
Reeds Wharf, 33 Mill Street, London SE1 2AX. Tel: 020 7253 2977  
Tower Works, Unit 02-01, Globe Road, Leeds, LS11 5QG. Tel: 0113 3025 130  
Graham Chambers, 45 West Nile Street, Glasgow, G1 2PT. Tel: 0141 370 1829  
[www.civicengineers.com](http://www.civicengineers.com)

Project  
WAC Arts, London

Title  
Section B Proposed Structure

INFORMATION			
Scale @ A1 1:50	Date Created JUL '19	Drawn GS	Checked SH
Project Number 1130/01	Drawing Number (GA)012		Revision P02





Floor assessed and strengthened as required.

- Standard Notes
1. This drawing is to be read in conjunction with all relevant Architect's and Engineer's drawings and the specification.
  2. This drawing should not be scaled.
  3. All dimensions are to be verified by the contractor on site.
  4. All discrepancies should be reported to the C.A. prior to the commencement of the works.

© CIVICENGINEERS

Notes and Keys

NOT FOR  
CONSTRUCTION

14.08.19	P02	Notes updated	GS	SH
15.07.19	P01	Issued as part of a report	GS	SH
Date	Rev	Description	Drawn	Chkd



Civic Engineers

MANCHESTER  
LONDON  
LEEDS  
GLASGOW

Carver's Warehouse, 77 Dale Street, Manchester, M1 2HG. Tel: 0161 228 6757  
Reeds Wharf, 33 Mill Street, London SE1 2AX. Tel: 020 7253 2977  
Tower Works, Unit 02-01, Globe Road, Leeds, LS11 5QG. Tel: 0113 3025 130  
Graham Chambers, 45 West Nile Street, Glasgow, G1 2PT. Tel: 0141 370 1829  
[www.civicingineers.com](http://www.civicingineers.com)

Project  
WAC Arts, London

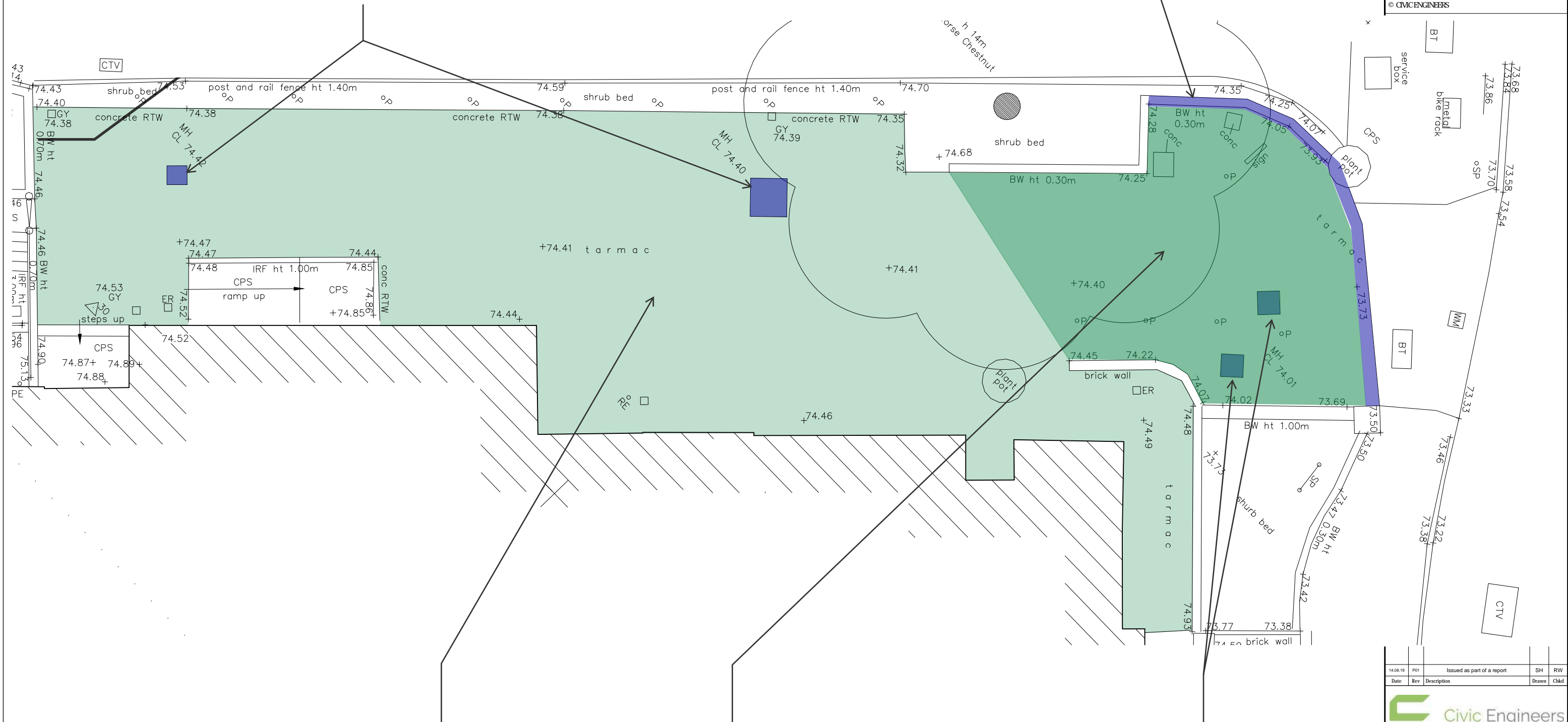
Title  
Section C Proposed Structure

INFORMATION			
Scale @ A1 1:50	Date Created JUL '19	Drawn GS	Checked SH
Project Number 1130/01	Drawing Number (GA)013		Revision P02



1. This drawing is to be read in conjunction with all relevant Architect's and Engineer's drawings and the specification.
2. This drawing should not be scaled.
3. All dimensions are to be verified by the contractor on site.
4. All discrepancies should be reported to the C.A. prior to the commencement of the works.

## Manhole levels raised to suit new build-ups



### Proposed Cafe Terrace

Scale1:100@A3

14.08.19	P01	Issued as part of a report	SH	RW
Date	Rev	Description	Drawn	Chkd



**MANCHESTER** Carver's Warehouse, 77 Dale Street, Manchester, M1 2HG. Tel: 0161 228 6757  
**LONDON** Reeds Wharf, 33 Mill Street, London SE1 2AX. Tel: 020 7253 2977  
**LEEDS** Tower Works, Unit 02-01, Globe Road, Leeds, LS11 5QG. Tel: 0113 2025 130  
**GLASGOW** Gresham Chambers, 45 West Nile Street, Glasgow, G1 2PT. Tel: 0141 370 1829

**www.civicingineers.com**

Project  
WAC Arts, London

Title
Proposed Cafe Terrace Plan

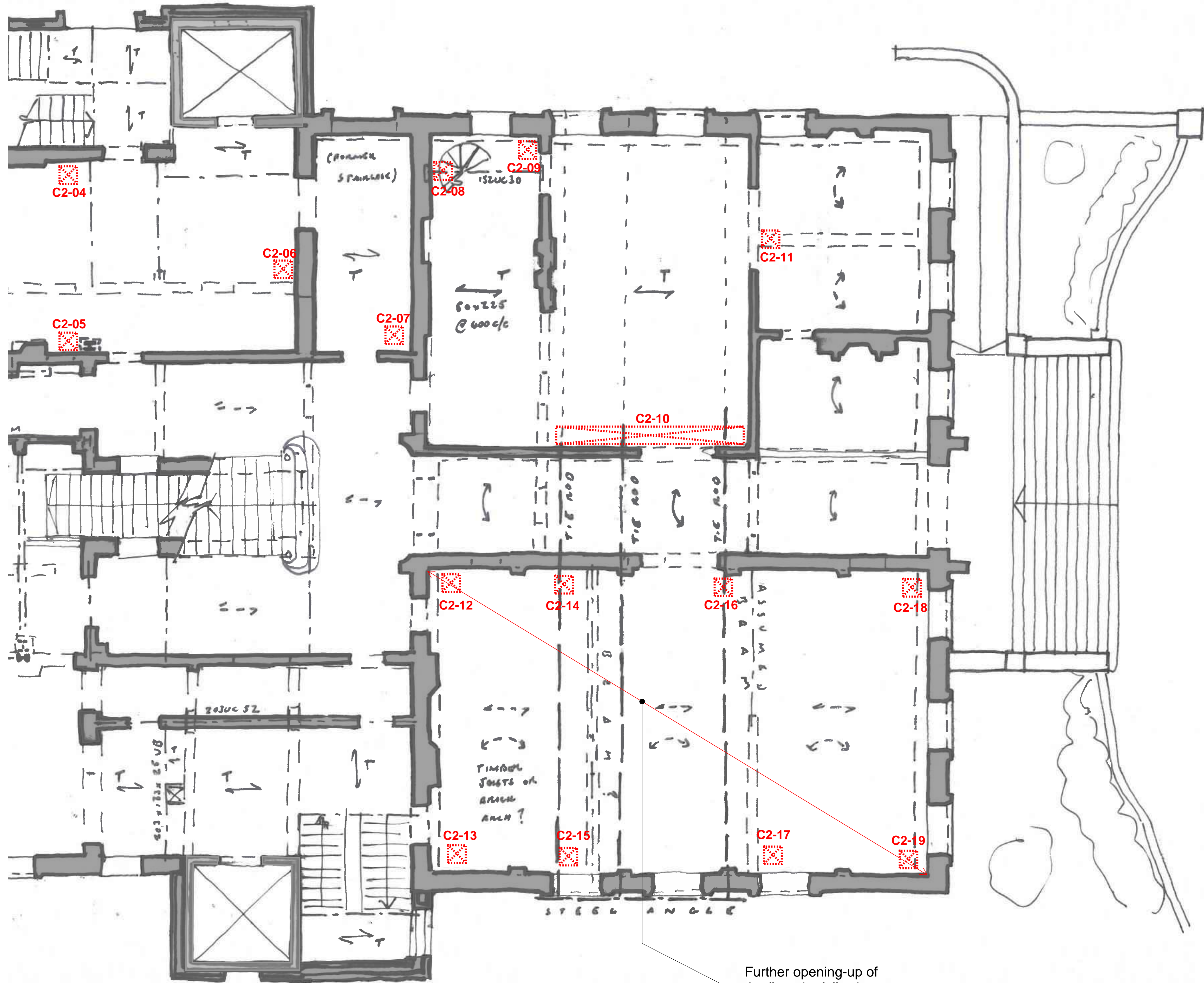
Status	INFORMATION
--------	-------------

Scale 1:100 @ A3	Date Created AUG '19	Drawn SH	Checked RW
Project Number 1130/01	Drawing Number (GA)021		Revision P01



**Appendix 4:** Proposed Opening-up Works






- Standard Notes
1. This drawing is to be read in conjunction with all relevant Architect's and Engineer's drawings and the specification.
  2. This drawing should not be scaled.
  3. All dimensions are to be verified by the contractor on site.
  4. All discrepancies should be reported to the C.A. prior to the commencement of the works.

© CIVICENGINEERS

Notes and Keys

**Key**

 Ceiling Opening Up  
min 800x800 area of removal of  
finishes and boarding from level  
below to expose structure behind.  
Historic cornicing to be retained  
where present.

**NOT FOR  
CONSTRUCTION**

14.08.19	P02	Changes to opening up locations	GS	SH
15.07.19	P01	Issued as part of a report	GS	SH
Date	Rev	Description	Drawn	Chkd

 **Civic Engineers**

MANCHESTER  
LONDON  
LEEDS  
GLASGOW

Carver's Warehouse, 77 Dale Street, Manchester, M1 2HG. Tel: 0161 228 6757  
Reeds Wharf, 33 Mill Street, London SE1 2AX. Tel: 020 7253 2977  
Tower Works, Unit 02-01, Globe Road, Leeds, LS11 5QG. Tel: 0113 3025 130  
Graham Chambers, 45 West Nile Street, Glasgow, G1 2PT. Tel: 0141 370 1829

[www.civicingineers.com](http://www.civicingineers.com)

Project

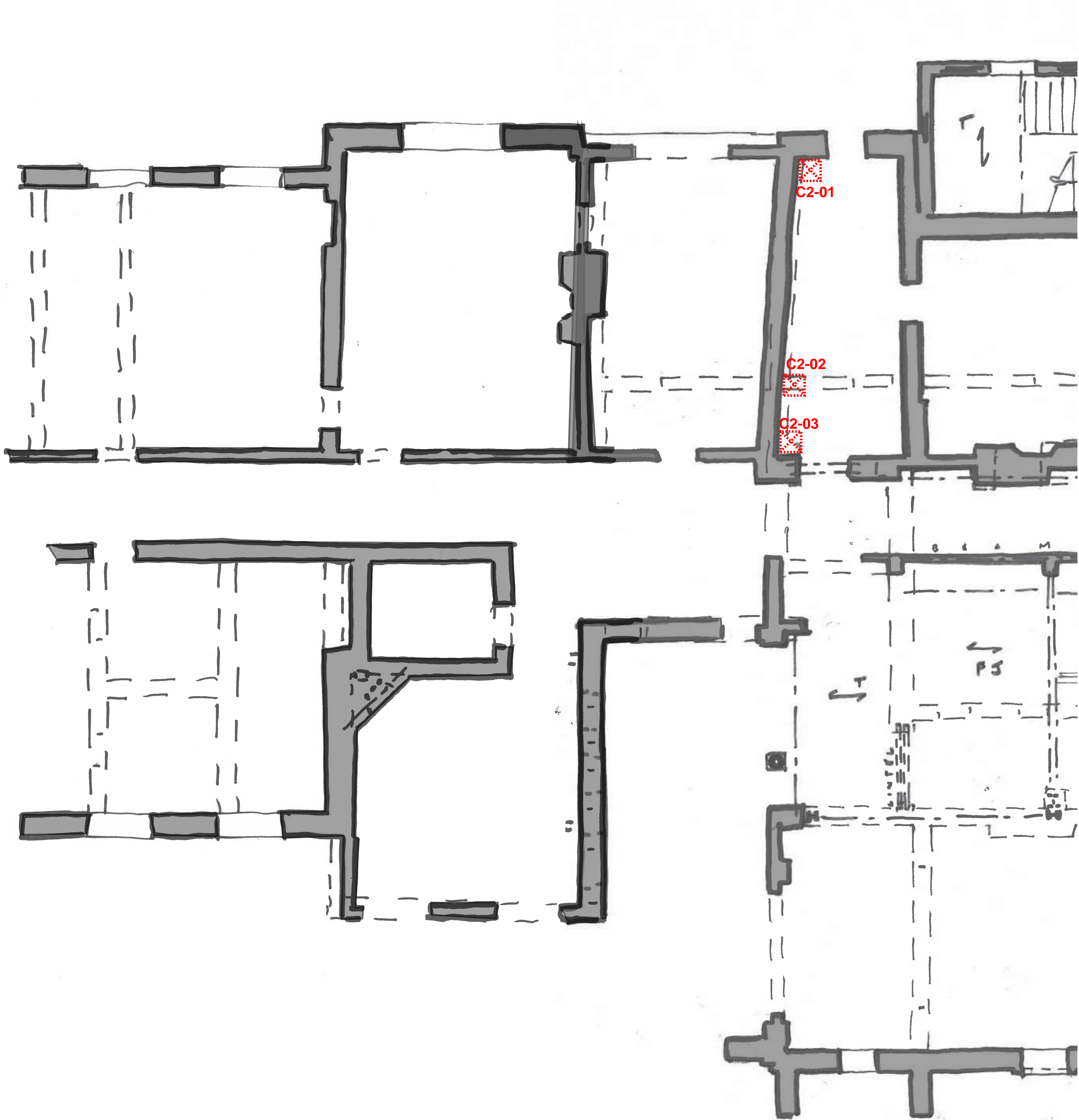
WAC Arts, London

Title

Level 2, Northern Half Site Investigations

INFORMATION			
Scale @ A1	Date Created	Drawn	Checked
1:50	JUL '19	GS	SH
Project Number	Drawing Number	Revision	
1130/01	(SI)002a	P02	






- Standard Notes
1. This drawing is to be read in conjunction with all relevant Architect's and Engineer's drawings and the specification.
  2. This drawing should not be scaled.
  3. All dimensions are to be verified by the contractor on site.
  4. All discrepancies should be reported to the C.A. prior to the commencement of the works.

© CIVICENGINEERS

Notes and Keys

Key

 Ceiling Opening Up  
min 800x800 area of removal of  
finishes and boarding from level  
below to expose structure behind.  
Historic cornicing to be retained  
where present.

NOT FOR  
CONSTRUCTION

14.08.19	P02	Changes to opening up locations	GS	SH
15.07.19	P01	Issued as part of a report	GS	SH
Date	Rev	Description	Drawn	Chkd

**Civic Engineers**

MANCHESTER  
LONDON  
LEEDS  
GLASGOW

Carver's Warehouse, 77 Dale Street, Manchester, M1 2HG. Tel: 0161 228 6757  
Reeds Wharf, 33 Mill Street, London SE1 2AX. Tel: 020 7253 2977  
Tower Works, Unit 02-01, Globe Road, Leeds, LS11 5QG. Tel: 0113 3025 130  
Graham Chambers, 45 West Nile Street, Glasgow, G1 2PT. Tel: 0141 370 1829  
[www.civicingineers.com](http://www.civicingineers.com)

Project

WAC Arts, London

Title

Level 2, Southern Half Site Investigations

INFORMATION			
Scale @ A1	Date Created	Drawn	Checked
1:50	JUL '19	GS	SH
Project Number	Drawing Number	Revision	
1130/01	(SI)002b	P02	









Standard Notes

1. This drawing is to be read in conjunction with all relevant Architect's and Engineer's drawings and the specification.
2. This drawing should not be scaled.
3. All dimensions are to be verified by the contractor on site.
4. All discrepancies should be reported to the C.A. prior to the commencement of the works.

© CIVIC ENGINEERS

Notes and Keys

Key



Ceiling Opening Up

min 800x800 area removal of finishes and boarding from level below to expose structure behind. Historic cornicing to be retained where present.

NOT FOR  
CONSTRUCTION

14.06.19	P02	Changes to opening up locations	GS	SH
15.07.19	P01	Issued as part of a report	GS	SH
Date	Rev	Description	Drawn	Chkd



Civic Engineers

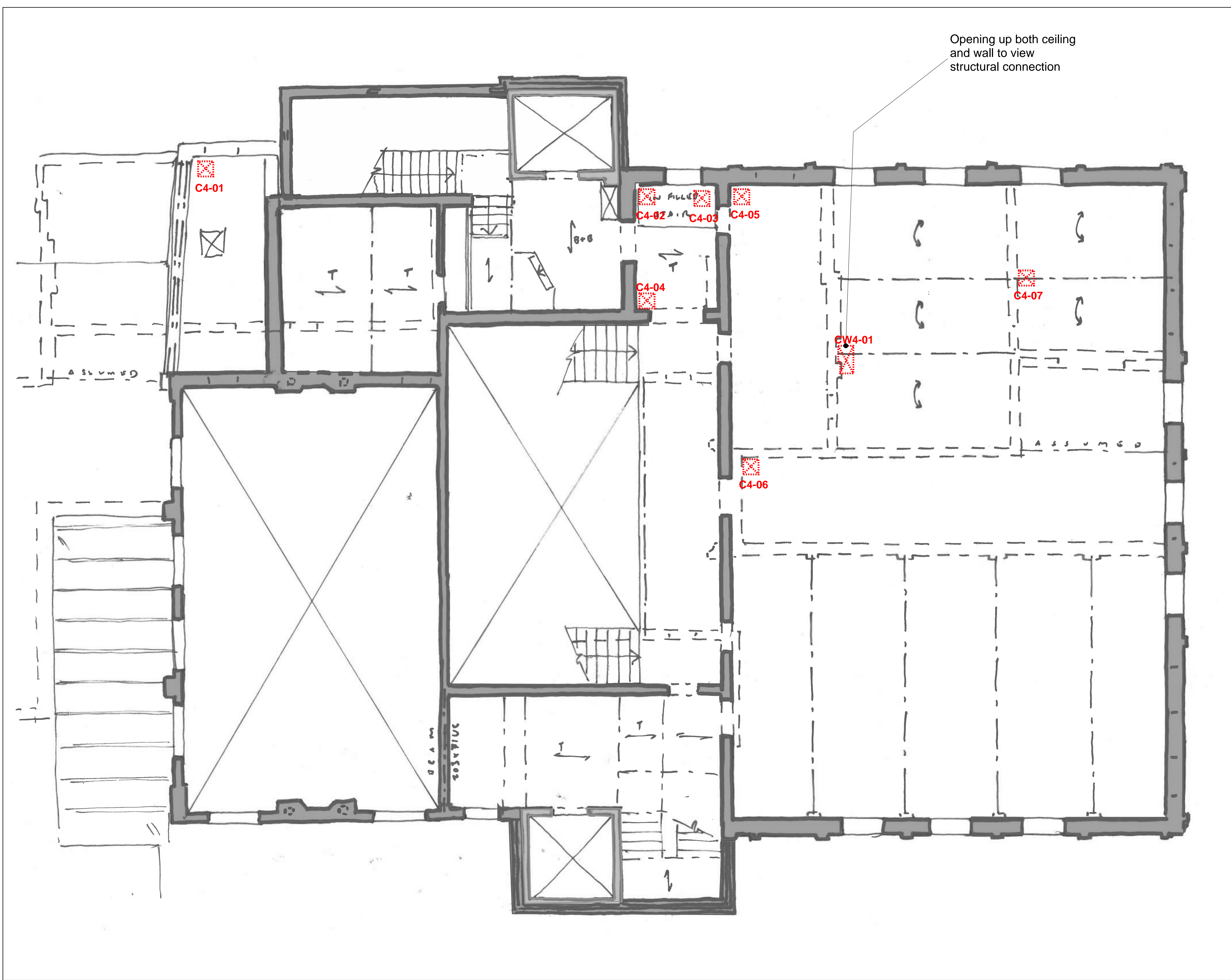
MANCHESTER  
LONDON  
LEEDS  
GLASGOW

Carver's Warehouse, 77 Dale Street, Manchester, M1 2HG. Tel: 0161 228 6757  
Reeds Wharf, 33 Mill Street, London SE1 2AX. Tel: 020 7253 2977  
Tower Works, Unit 02-01, Globe Road, Leeds, LS11 5GG. Tel: 0113 2025 130  
Gresham Chambers, 45 West Nile Street, Glasgow, G1 2PT. Tel: 0141 370 1829

www.civicingineers.com

Project			
WAC Arts, London			
Title			
Level 3 Southern Half Site Investigations			
Status			
INFORMATION			
Scale @ A1	Date Created	Drawn	Checked
1:50	JUL '19	GS	SH
Project Number	Drawing Number	Revision	
1130/01	(SI)003b	P02	






Standard Notes

1. This drawing is to be read in conjunction with all relevant Architect's and Engineer's drawings and the specification.
2. This drawing should not be scaled.
3. All dimensions are to be verified by the contractor on site.
4. All discrepancies should be reported to the C.A. prior to the commencement of the works.

© CIVICENGINEERS

Notes and Keys

Key

 Ceiling Opening Up  
min 800x800 area removal of finishes  
and boarding from level below to  
expose structure behind. Historic  
cornicing to be retained where  
present.

NOT FOR  
CONSTRUCTION

14.08.19	P02	Changes to opening up locations	GS	SH
15.07.19	P01	Issued as part of a report	GS	SH
Date	Rev	Description	Drawn	Chkd

MANCHESTER

LONDON

LEEDS

GLASGOW

Carver's Warehouse, 77 Dale Street, Manchester, M1 2HG. Tel: 0161 228 6757  
Reeds Wharf, 33 Mill Street, London SE1 2AX. Tel: 020 7253 2977  
Tower Works, Unit 02-01, Globe Road, Leeds, LS11 5QG. Tel: 0113 3025 130  
Graham Chambers, 45 West Nile Street, Glasgow, G1 2PT. Tel: 0141 370 1829  
[www.civicingineers.com](http://www.civicingineers.com)

Project

WAC Arts, London

Title

Level 4 Site Investigations

Status

INFORMATION

Scale @ A1	Date Created	Drawn	Checked
1:50	JUL '19	GS	SH
Project Number	Drawing Number	Revision	
1130/01	(SI)004	P02	

#### Manchester

Carver's Warehouse  
77 Dale Street  
Manchester M1 2HG  
+44 (0)161 228 6757

#### London

Reeds Wharf  
33 Mill Street  
London SE1 2AX  
+44 (0)20 7253 2977

#### Leeds

Unit 02/01 Tower Works  
Globe Road  
Leeds LS11 5QG  
+44 (0)113 2025 130

#### Glasgow

Gresham Chambers  
45 West Nile Street  
Glasgow G1 2PT  
+44 (0)141 370 1829