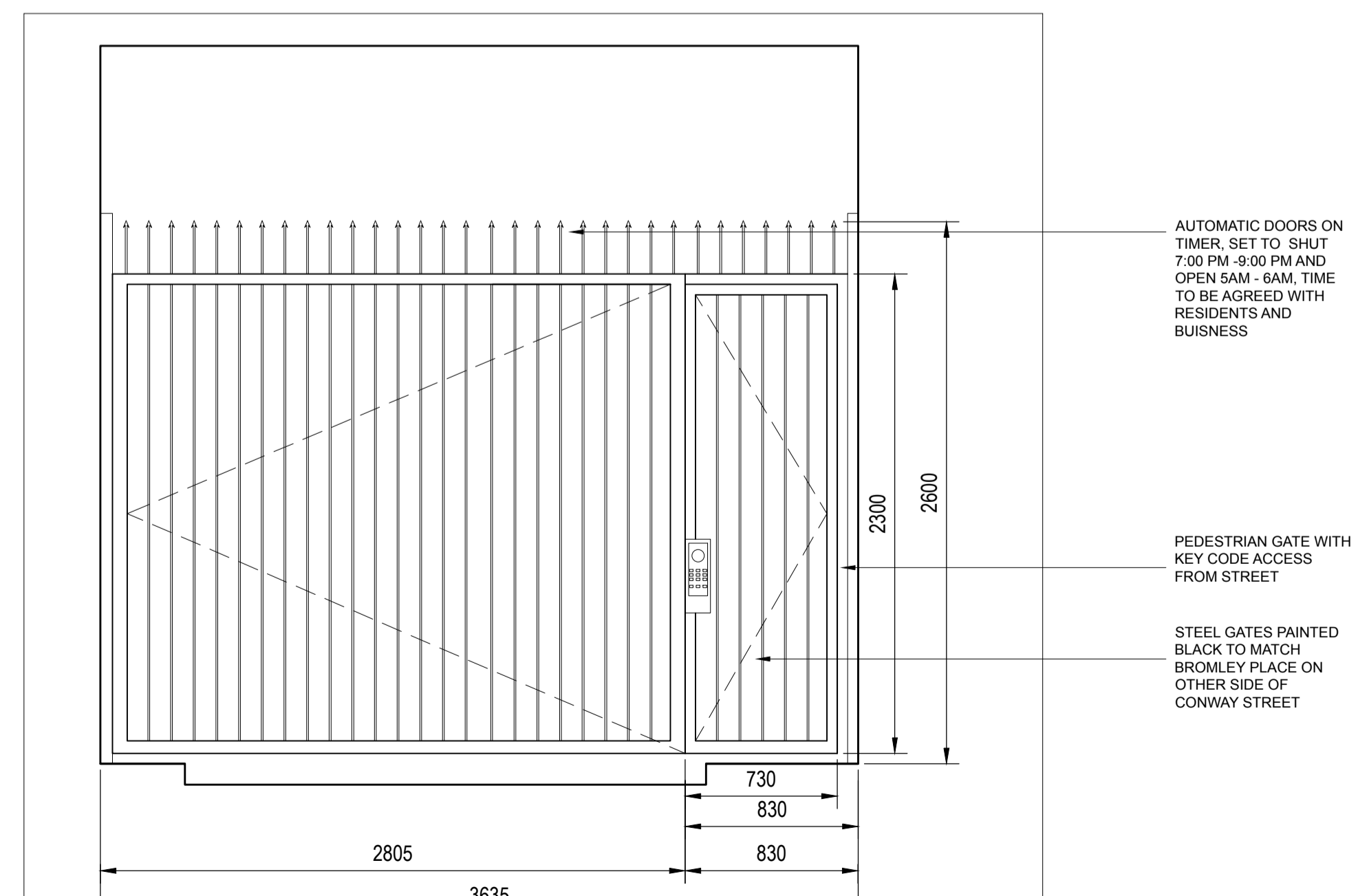


PROPOSED PLAN 1:100 @A1



PROPOSED ELEVATION AA FROM CONWAY STREET 1:50 @A1 OR 1:25 @A3



PROPOSED GATE FROM CONWAY STREET 1:25@A1 OR 1:50 @A3

CONTRACTOR IS TO CHECK AND VERIFY ALL BUILDING AND SITE DIMENSIONS, LEVELS AND SEWER INVERT LEVELS AT CONNECTION POINTS BEFORE WORK STARTS
THIS DRAWING IS TO BE READ AND CHECKED IN CONJUNCTION WITH ENGINEERS AND OTHER SPECIALIST DRAWINGS
THE DRAWING AND THE WORKS DEPICTED ARE THE INTELLECTUAL PROPERTY OF INK BESPOKE LTD AND MAY NOT BE REPRODUCED EXCEPT BY WRITTEN PERMISSION

NOTE

FOR INFORMATION ONLY

REV	DATE	DESCRIPTION
REV D	15/07/19	GATE HEIGHT AND LAYOUT ADJUSTED
REV C	14/12/18	GATE WIDTH ADJUSTMENT
REV B	08/12/18	INTERCOM FOR RESIDENT FLAT LOCATION INCLUDED
REV A	22/08/18	GATE DESIGN UPDATED

315 BANKSIDE LOFT
85 HOPTON STREET
LONDON, SE1 9UL



PROJECT
4 CONWAY STREET
DRAWING TITLE
PROPOSED CONWAY MEWS

DRAWING NUMBER	REVISION
CM04 - 100-03	D
SCALE	ISSUE DATE
1:50@A1	2018-06-20
PROJECT STATUS	DRAWN BY
STAGE 2	MC
	CHECKED BY
	KS