

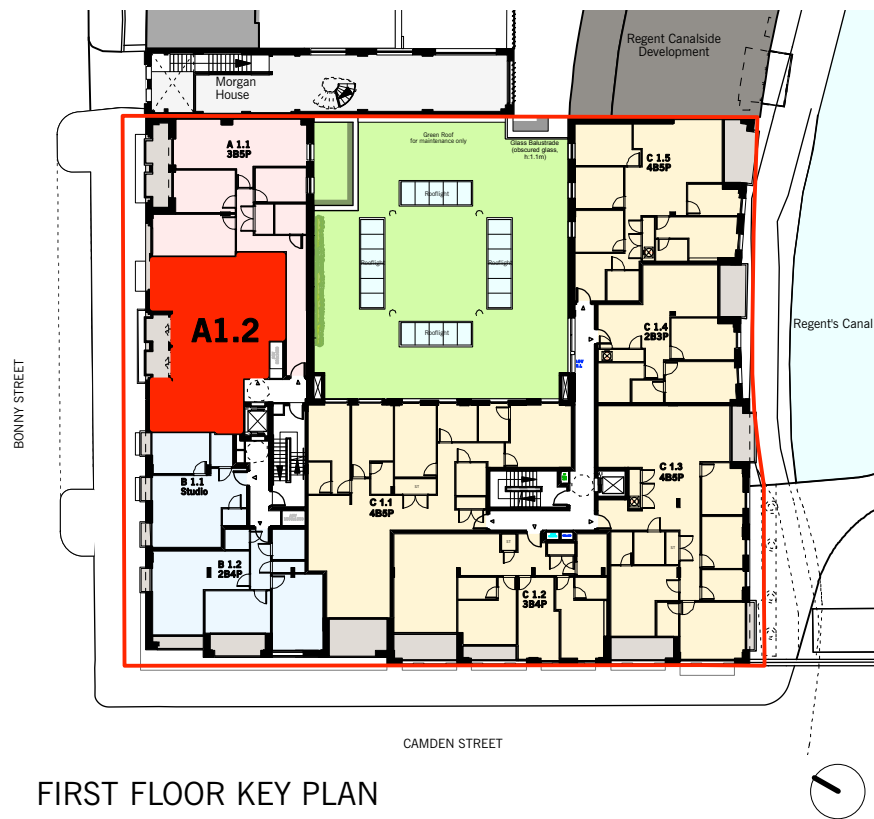


**140-146 CAMDEN STREET  
CAMDEN - LONDON NW1 9PF**


**Section 73 Minor Material Amendments**

**Proposed Wheelchair Unit Plans**

August 2019



FIRST FLOOR KEY PLAN

 Flat A1.2 (Wheelchair unit)

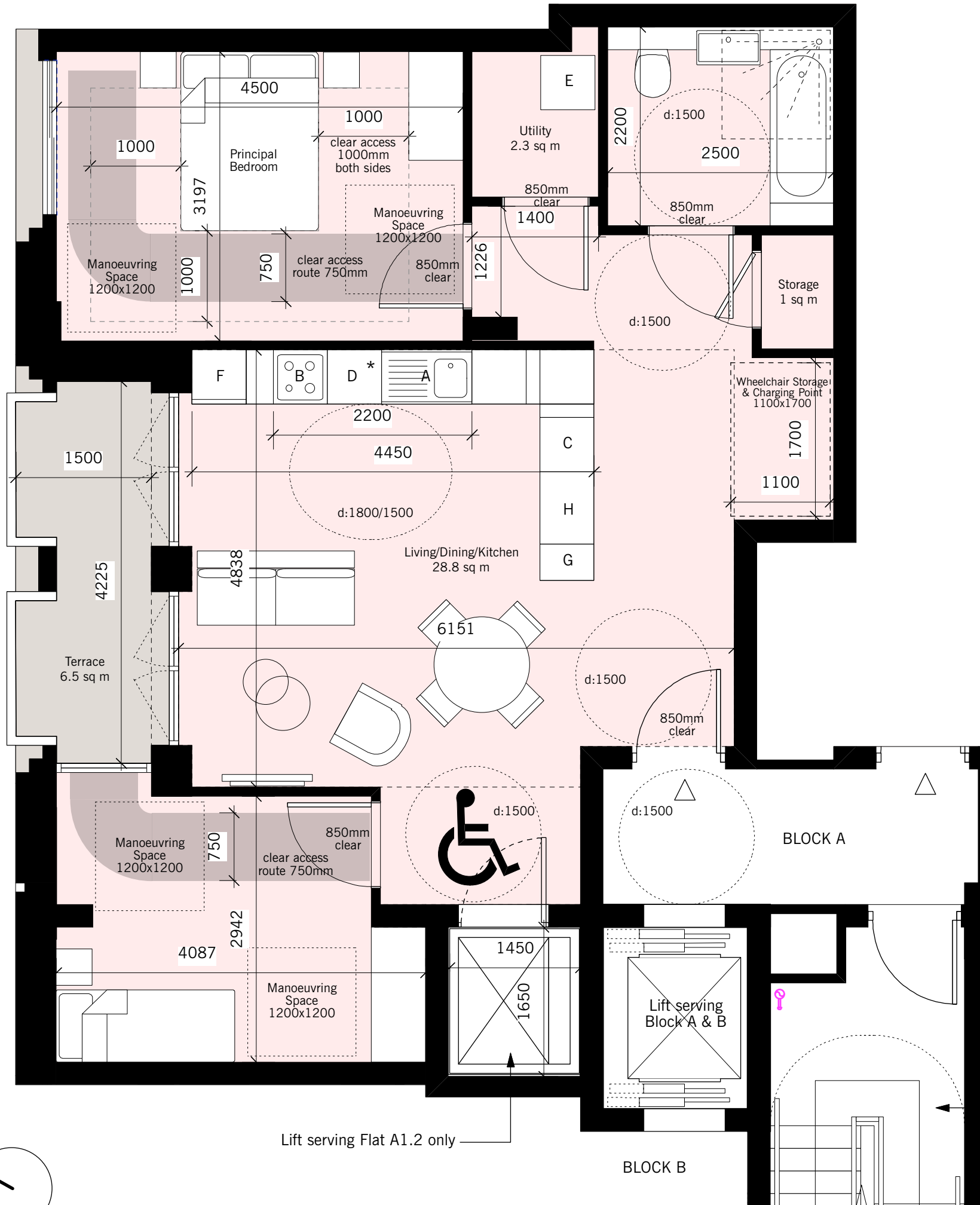
**KEY**

- A: Sink and drainer
- B: Hob
- C: Suitable space for built-in oven
- D: Dishwasher
- E: Washing Machine(in utility room)
- F: Fridge freezer
- G: Recycling
- H: Storage base units

\* Height adjustable or lowerable section of worktop with room below

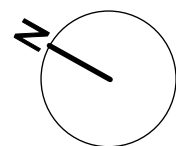
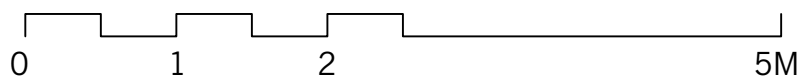
Kitchen worktop length = 6700mm

The ceilings have the structural capacity for future hoist installation.

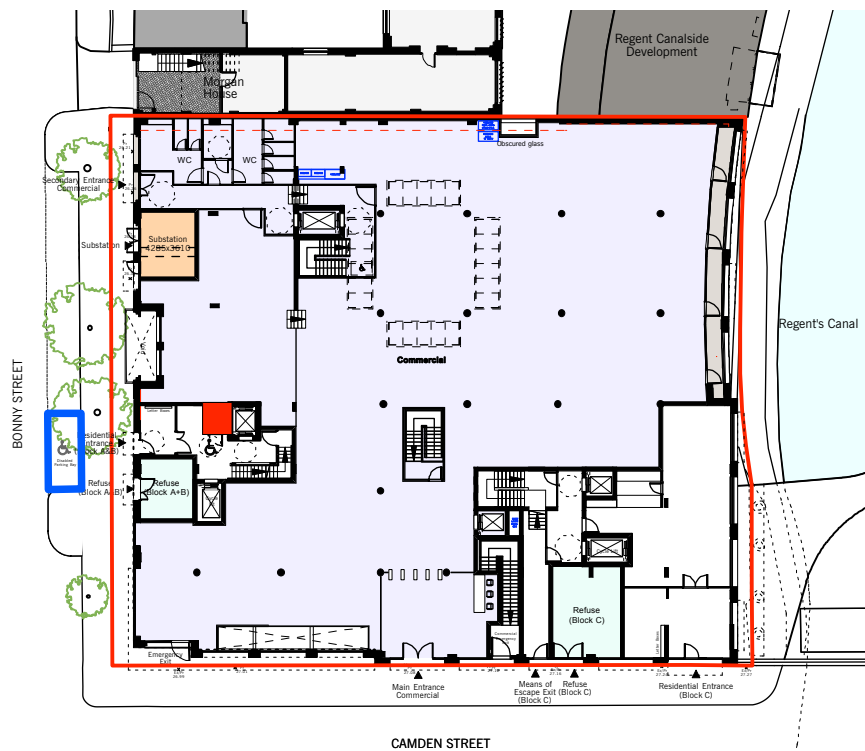


Lift serving Flat A1.2 only

Communal staircase to have handrails to both sides of the staircase, step nosings to use a contrasting material on both the treads and risers, all details to comply with AD Part K1.



S73 MINOR MATERIAL AMENDMENTS



- Lift serving Flat A1.2 (Wheelchair unit) only
- Disabled Parking Bay (Wheelchair unit)

DISABLED PARKING BAY LOCATION PLAN  
STREET LEVEL 1:500@A3

