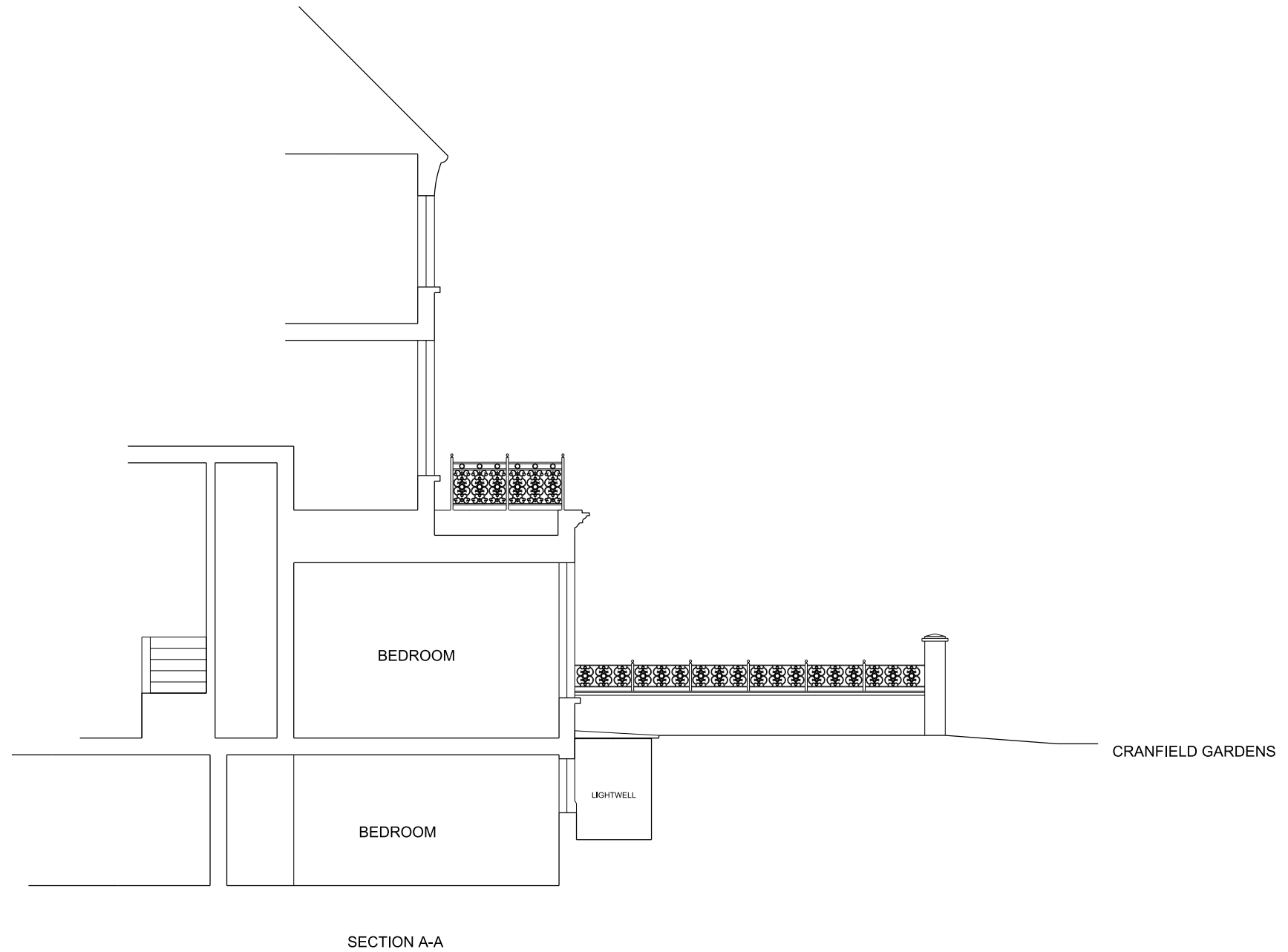
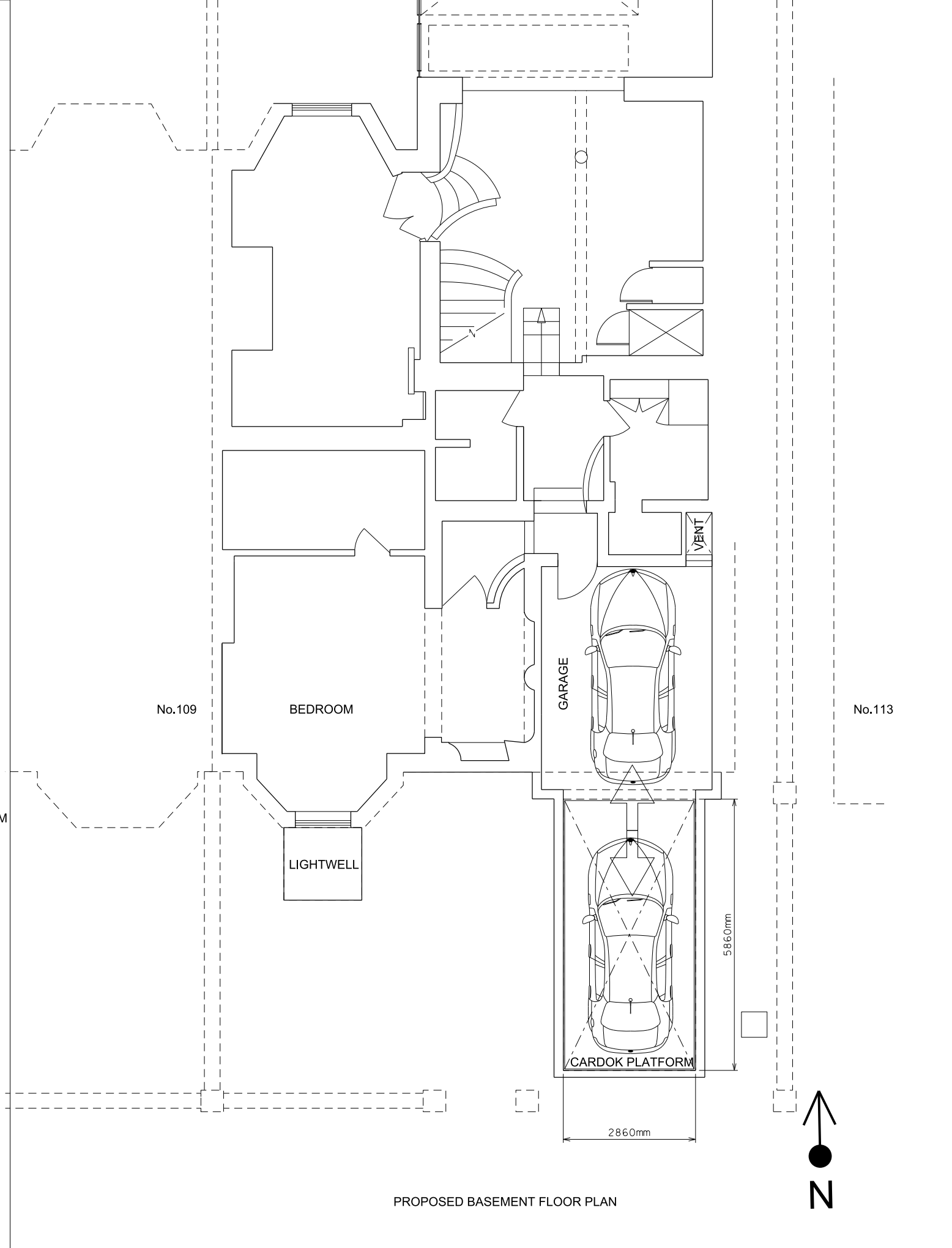
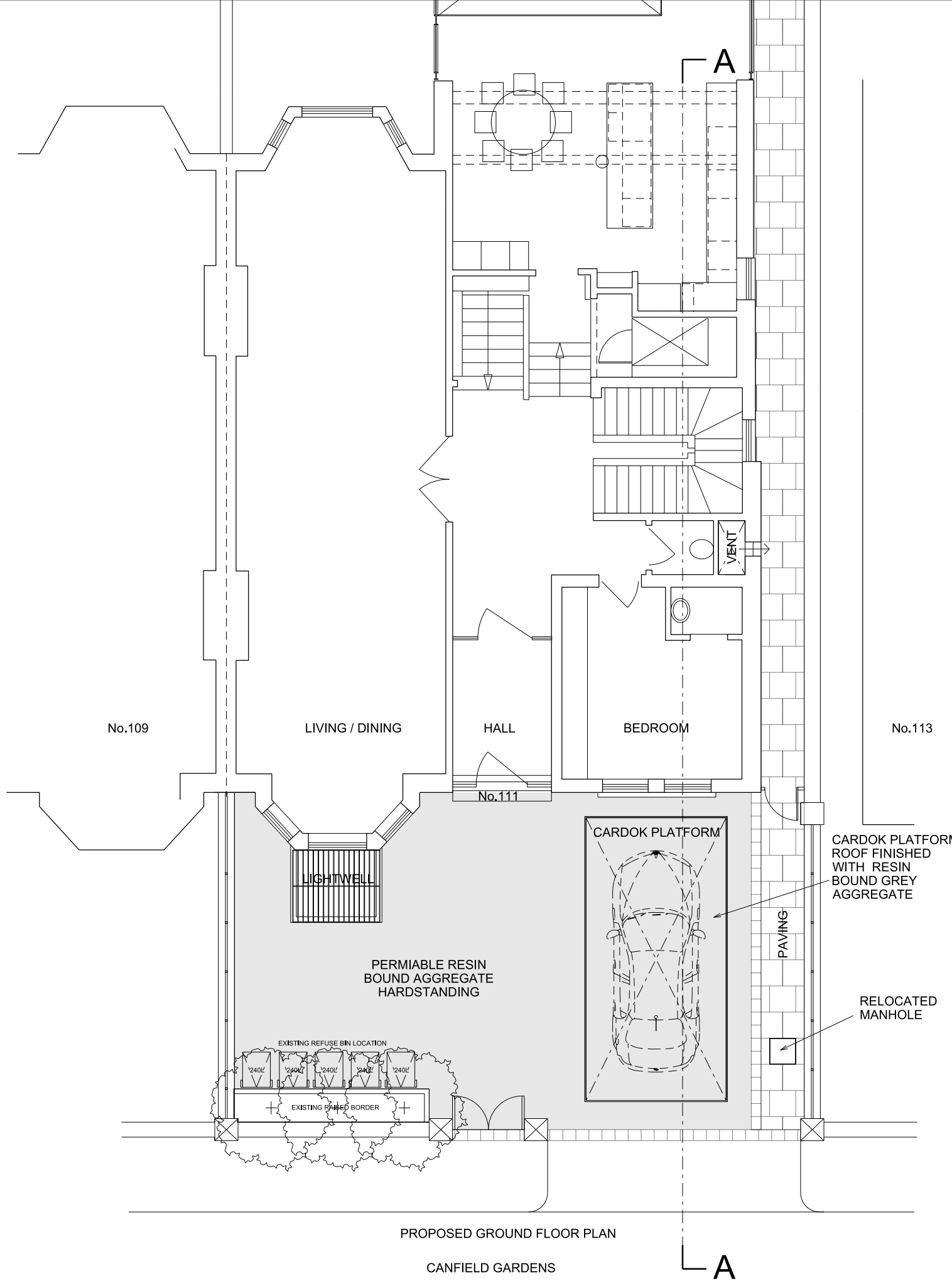




EXISTING CRANFIELD GARDENS (FRONT) ELEVATION AND SECTION THROUGH BEDROOM LIGHTWELLS








PROPOSED CRANFIELD GARDENS (FRONT) ELEVATION AND SECTION THROUGH BASEMENT CAR LIFT & EXISTING BEDROOM LIGHTWELL

CARDOK CARLIFT – Data Sheet



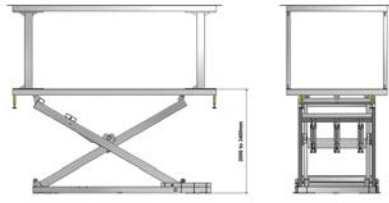
CARDOK CARLIFT with Hydraulic scissors
Installation to replace an access ramp

Fast, Silent, Discreet, Design, High-Tech

Cardok Lift van de Haar Group, 11 Cranfield Gardens, London NW6 1JG, UK. Tel: +44 (0)20 77 96 001 • info@cardok.com
We recommend a survey to provide advice on better placement. Sample images: view us on site

CARDOK CARLIFT – Data Sheet

Dimensions:
(Built to measure, all dimensions can be changed and adapted upon request and following acceptance)



Technical zone:
Need to provide a space of min. 2.2m² for technical area, accessible at all times for maintenance.
Need to install 2 watertight conduits for hydraulic pipes and electric cables, one separate conduit for each of them. The min diameter is 2 x 40mm (they can be cast in the concrete).

Cardok Lift van de Haar Group, 11 Cranfield Gardens, London NW6 1JG, UK. Tel: +44 (0)20 77 96 001 • info@cardok.com
We recommend a survey to provide advice on better placement. Sample images: view us on site

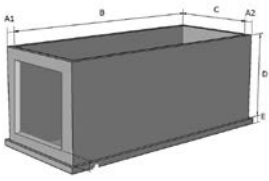
CARDOK CARLIFT – Data Sheet

Characteristics:

	Standard	Option
Lower platform load	3000kg	2000kg / 2500kg (other)
Upper platform load	3000kg (static)	2000kg / 2500kg (other)
<i>(Dynamic movement available upon request)</i>		
Dimensions available for lower platform	2000 x 6000mm	2000/2500 x 5000/6000 (other)
Dimensions available for upper platform	3000 x 6000mm	3000/3500 x 5000/6000 (other)
Available height	2000 - 3400mm	>3400 possible with rigid chains

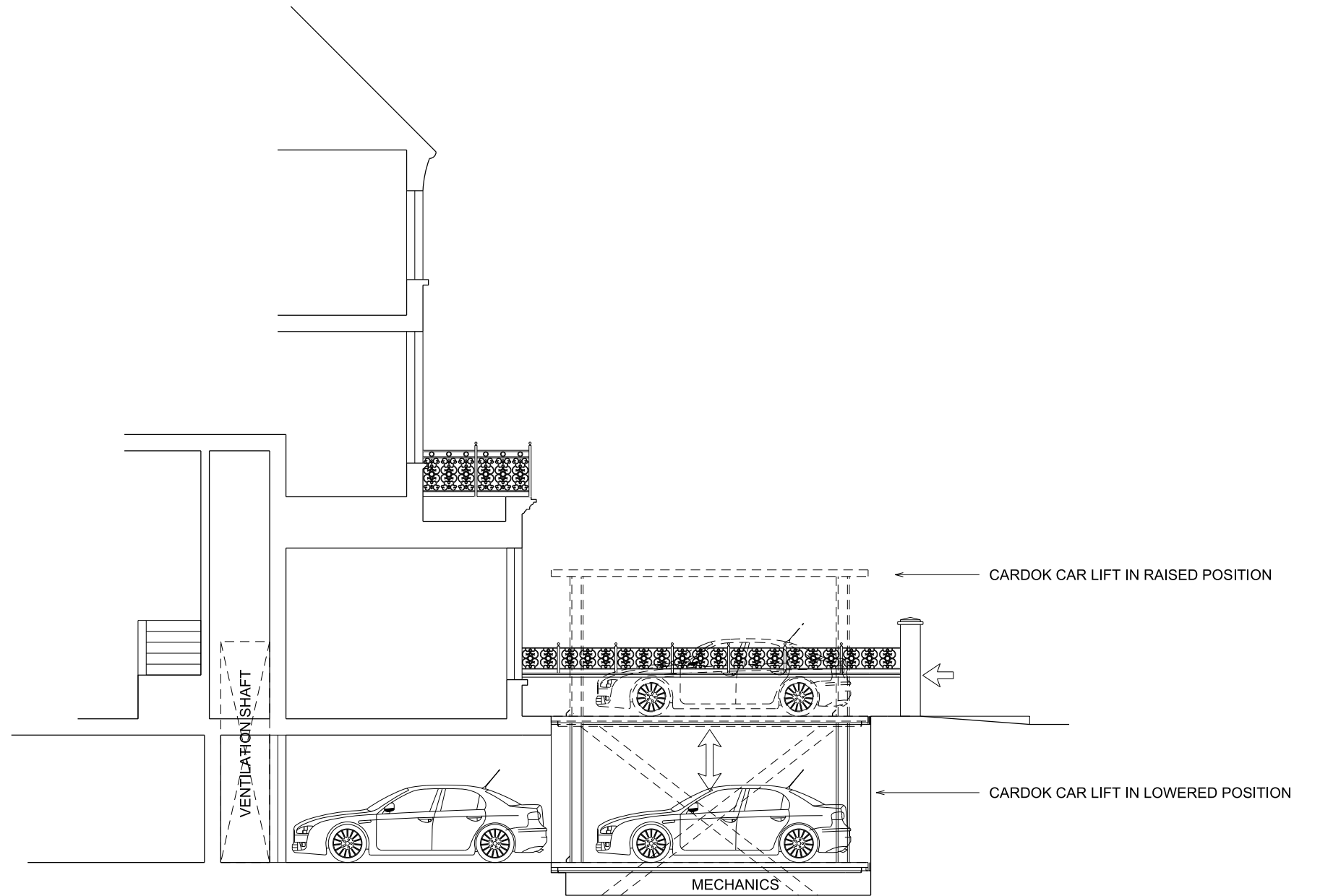
Concrete pit: (built to customer)
The thickness of the walls needs to be defined by an engineer depending on the quality of the land. The walls of the pit must be formed of concrete and must be perfectly flat and vertical without any protrusions.
The weight of the entire installation together with the maximum load is borne by the concrete pit floor (6-8 axes of 400 x 400mm). The static force of each of them is >300kN. The size can be increased, upon demand.
Concrete quality according to the static requirement of the building but for the lowest bearing we require a concrete quality of min. C25/30.
It is important to ensure that the pit edge remains watertight to avoid water entering the concrete card. This can be achieved with sulphur for example. If the land has low permeability we recommend installing a drainage system.
Provision of a watertight passage is necessary for hydraulic pipes and electrical supply of min. 2 x 40mm in diameter.
Provision of a watertight passage is necessary for water drainage. (see "drainage")
(made to measure, all dimensions can be changed upon request and upon acceptance by Cardok)

A1 to be defined by the engineer
A2 to be defined by the engineer
B standard 1800mm
C standard 1800mm
D standard 2100mm
E to be defined by the engineer
F standard 670mm



Cardok Lift van de Haar Group, 11 Cranfield Gardens, London NW6 1JG, UK. Tel: +44 (0)20 77 96 001 • info@cardok.com
We recommend a survey to provide advice on better placement. Sample images: view us on site

CARDOK CARLIFT PRODUCT INFORMATION



PROPOSED SECTION A-A THROUGH CARDOCK