

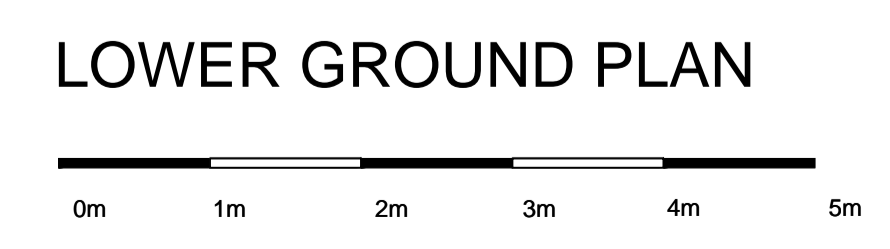
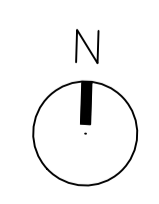
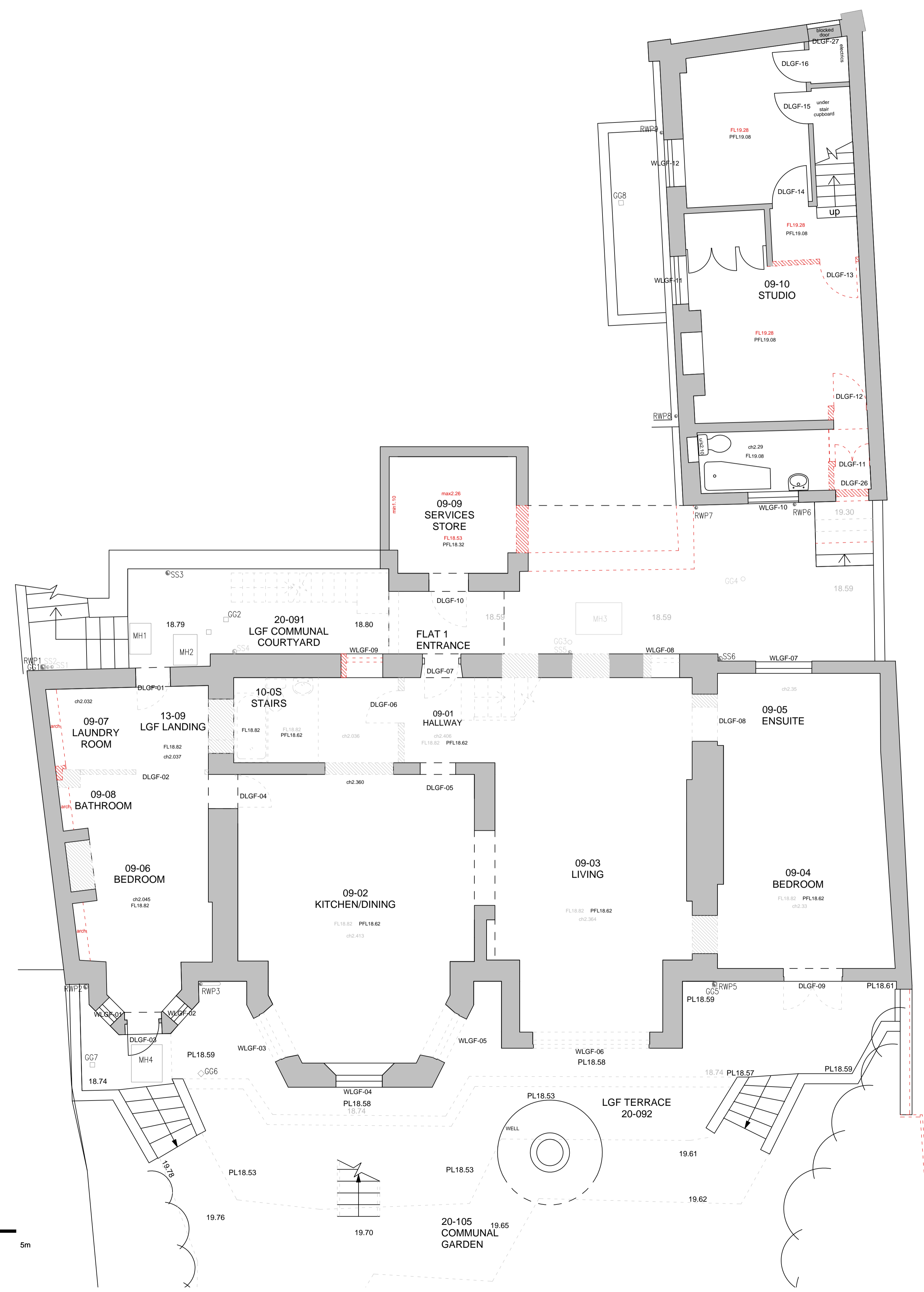


DO NOT SCALE FROM THIS DRAWING
 DRAWING TO BE READ IN CONJUNCTION WITH ALL OTHER ARCHITECTS AND ENGINEER'S CONTRACT DRAWING & SPECIFICATIONS. ANY DISCREPANCIES MUST BE BROUGHT TO THE ATTENTION OF THE ARCHITECT IMMEDIATELY.
 THE CONTRACTOR MUST VERIFY ALL DIMENSIONS BY SITE MEASUREMENT BEFORE ORDERING MATERIALS OR MANUFACTURING COMPONENTS.
 SUBSTITUTE MATERIALS & PRODUCTS TO THOSE NAMED WILL BE ACCEPTABLE IF PROVEN TO BE OF EQUAL OR HIGHER PERFORMANCE AND NOT IN CONFLICT WITH OTHER ELEMENTS.

NOTES KEY:
 Consented Demolition associated with Application ref: 2013/0112/L, 2014/7932/P, 2016/6840/P & 2016/7148/L
 Proposed demolition
 Note:
 For windows and doors please refer to schedules.



REV	DATE	DESCRIPTION
A	30.11.18	For planning
B	30.07.19	For planning

FOR PLANNING

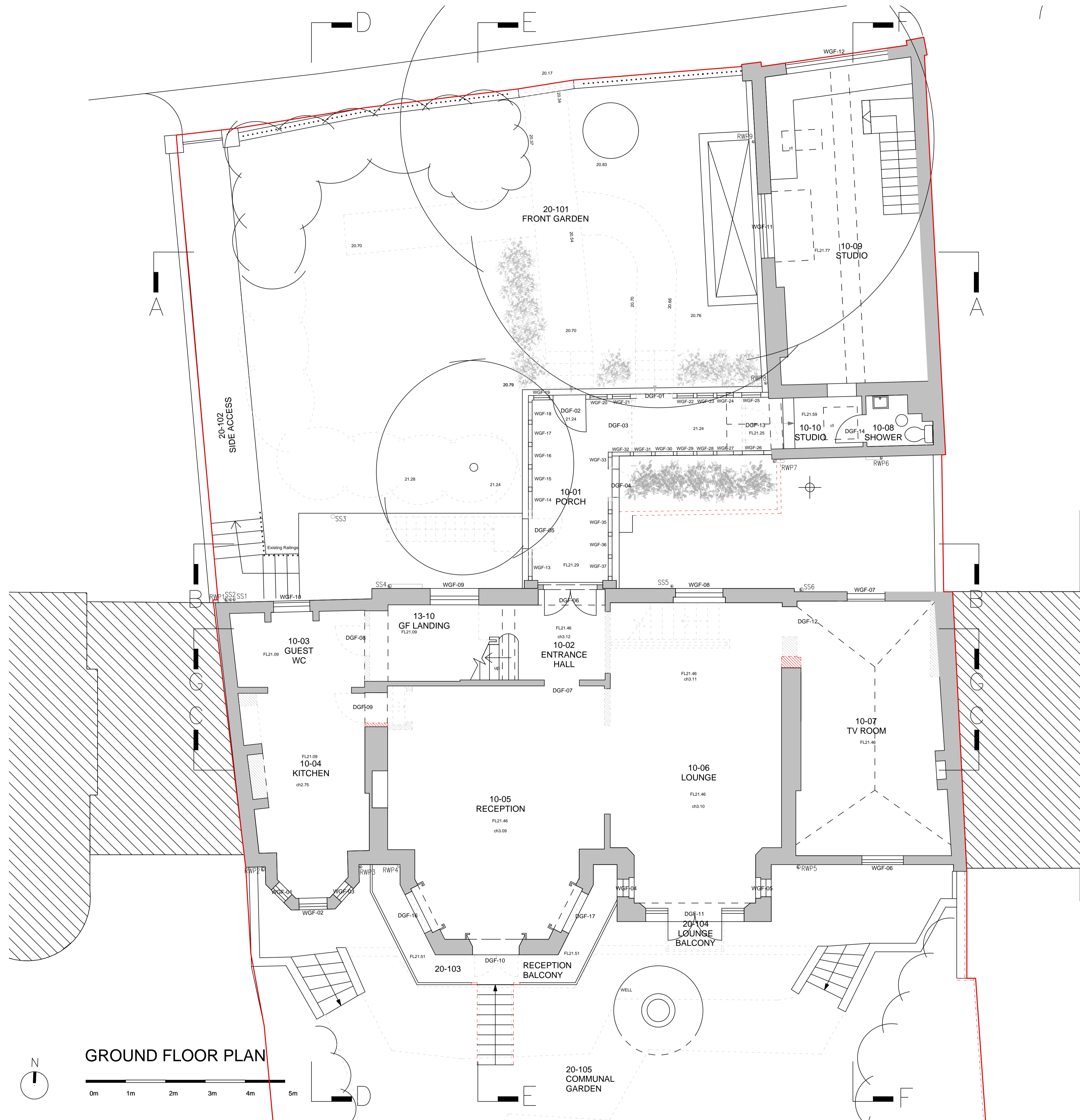
JOB TITLE:
 Keats Grove
 Hampstead

DRAWING TITLE:
 Lower Ground Floor Plan
 Proposed Demolition

JOB No	DWG No	REV
546	D01	B

DRAWN BY: RFB
SCALE (A1): 1:50 (1:100@A3)
DATE: Oct18

RICHARD GRIFFITHS ARCHITECTS
 5 Maidstone Mews, 72-76 Borough High Street, London SE1 1GN
 T +44(0)20 7357 8788 | F +44(0)20 7403 7887
 E admin@rgarchitects.com | www.rgarchitects.com

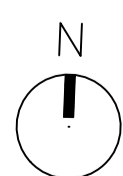


DO NOT SCALE FROM THIS DRAWING
 DRAWING TO BE READ IN CONJUNCTION WITH ALL OTHER ARCHITECTS AND ENGINEER'S CONTRACT DRAWING & SPECIFICATIONS. ANY DISCREPANCIES MUST BE BROUGHT TO THE ATTENTION OF THE ARCHITECT IMMEDIATELY.
 THE CONTRACTOR MUST VERIFY ALL DIMENSIONS BY SITE MEASUREMENT BEFORE ORDERING MATERIALS OR MANUFACTURING COMPONENTS.
 SUBSTITUTE MATERIALS & PRODUCTS TO THOSE NAMED WILL BE ACCEPTABLE IF PROVEN TO BE OF EQUAL OR HIGHER PERFORMANCE AND NOT IN CONFLICT WITH OTHER ELEMENTS.

NOTES
KEY:

 Consented Demolition associated with Application ref: 2013/0112/L, 2014/7932/P, 2016/6840/P & 2016/7148/L
 Proposed demolition
 Note:
 For windows and doors please refer to schedules.

GROUND FLOOR PLAN



REV DATE DESCRIPTION
 A 30.11.18 For planning
 B 30.07.19 For planning



FOR PLANNING

JOB TITLE
Keats Grove
 Hampstead
 DRAWING TITLE
Ground Floor Plan
 Proposed Demolition
 JOB No: 546 DWG No: D02 REV: B
 DRAWN BY: RFB SCALE (A1): 1:50 (1:100@A3) DATE: Oct18

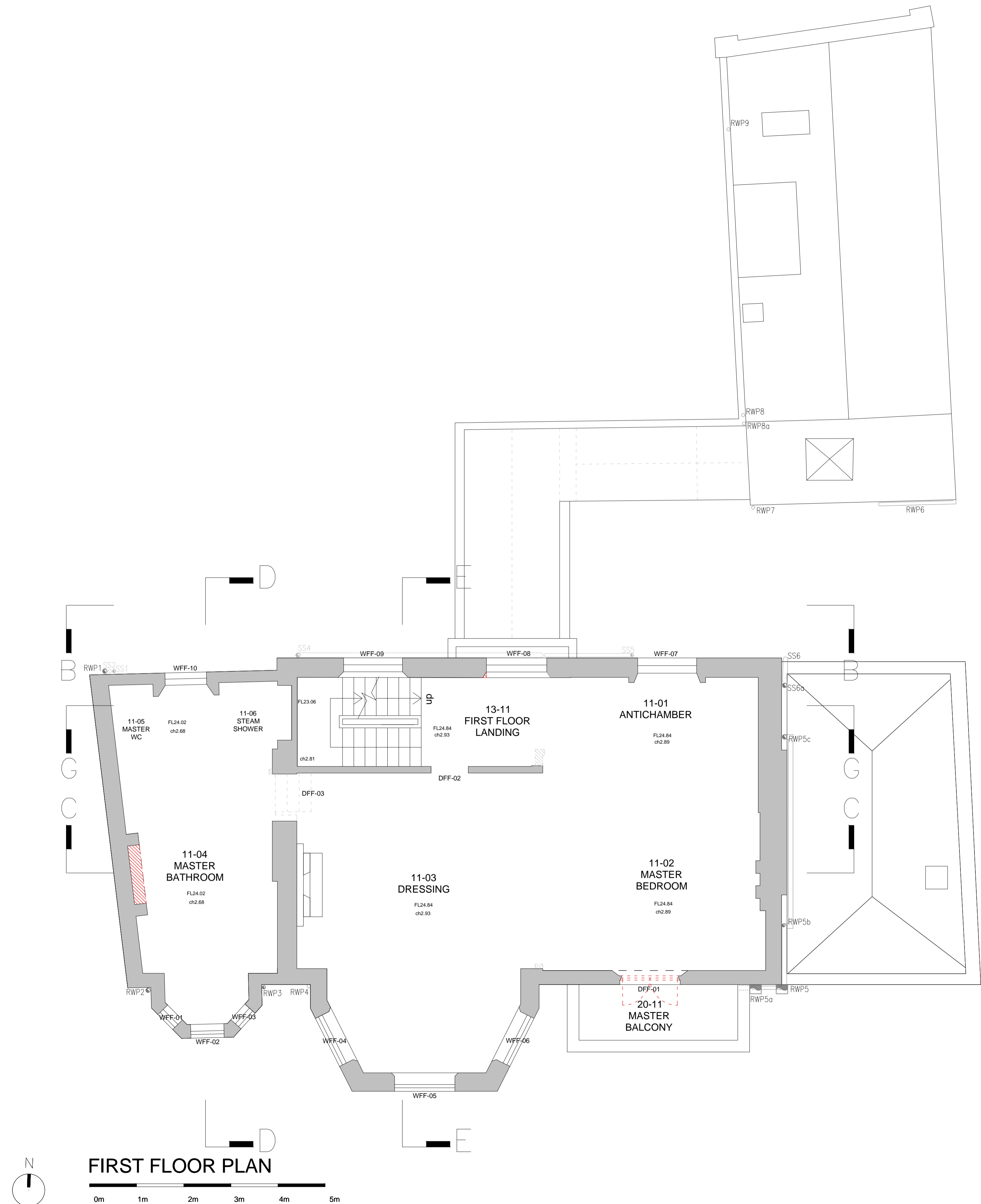
RICHARD GRIFFITHS ARCHITECTS

5 Maidstone Mews, 72-76 Borough High Street, London SE1 1GN
 T +44(0)20 7357 8788 | F +44(0)20 7403 7887
 E admin@rgarchitects.com | www.rgarchitects.com

DO NOT SCALE FROM THIS DRAWING
 DRAWING TO BE READ IN CONJUNCTION WITH ALL OTHER ARCHITECTS
 AND ENGINEER'S CONTRACT DRAWING & SPECIFICATIONS.
 ANY DISCREPANCIES MUST BE BROUGHT TO THE ATTENTION OF THE
 ARCHITECT IMMEDIATELY.
 THE CONTRACTOR MUST VERIFY ALL DIMENSIONS BY SITE
 MEASUREMENT BEFORE ORDERING MATERIALS OR MANUFACTURING
 COMPONENTS.
 SUBSTITUTE MATERIALS & PRODUCTS TO THOSE NAMED WILL BE
 ACCEPTABLE IF PROVEN TO BE OF EQUAL OR HIGHER PERFORMANCE
 AND NOT IN CONFLICT WITH OTHER ELEMENTS.

NOTES
 KEY:
 Consented Demolition associated with Application
 ref: 2013/5112/L, 2014/7932/P, 2016/6840/P & 2016/7148/L
 Proposed demolition

Note:
 For windows and doors please refer to schedules.



REV	DATE	DESCRIPTION
A	30.07.19	For Planning

FOR PLANNING

JOB TITLE
**Keats Grove
 Hampstead**
 DRAWING TITLE
**First Floor Plan
 Proposed Demolition**

JOB No	DWG No	REV
546	D03	A
DRAWN BY	SCALE (A1)	DATE
RFB	1:50 (1:100@A3)	Oct18

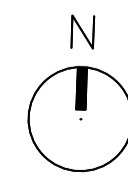
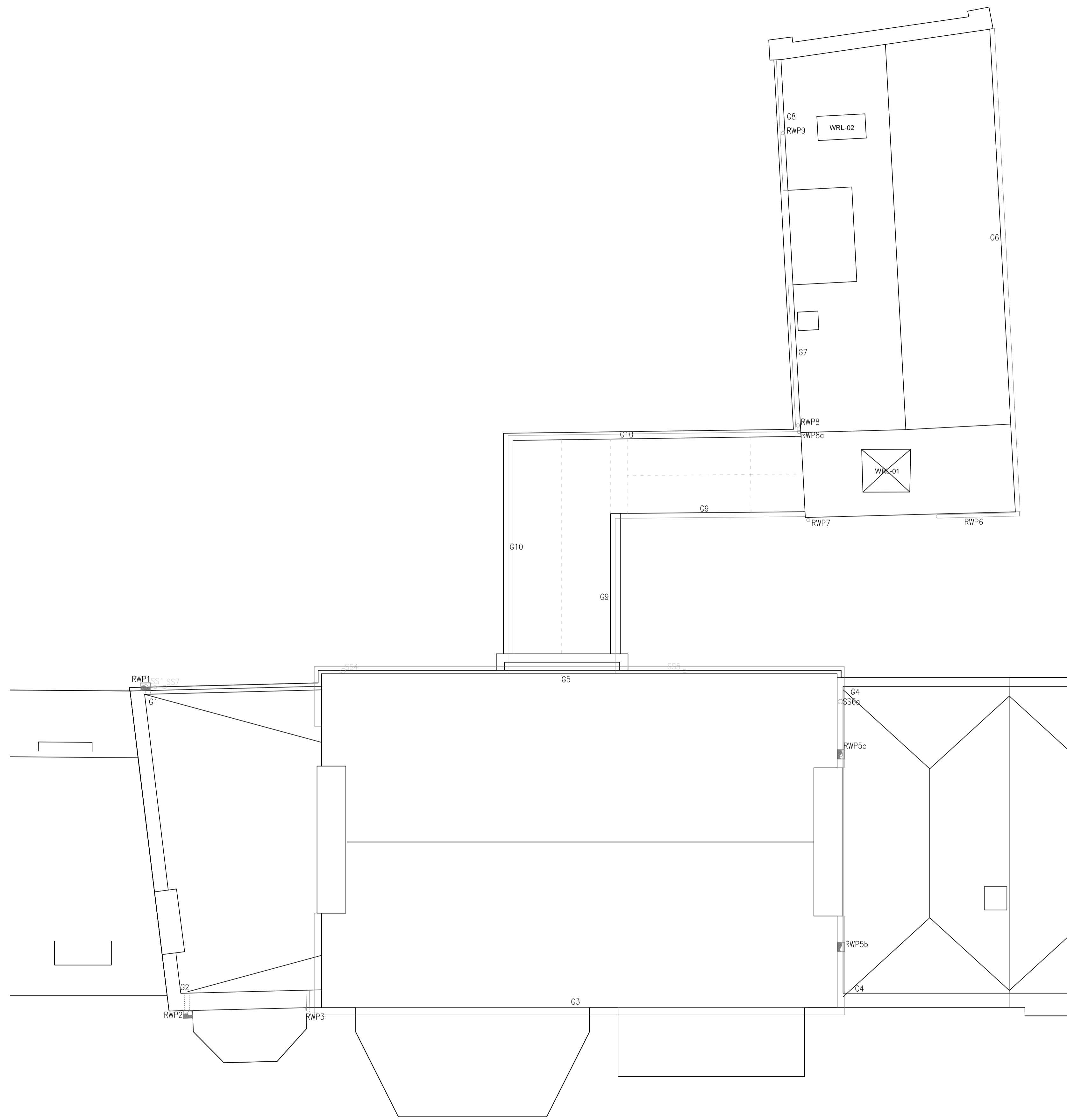
RICHARD GRIFFITHS ARCHITECTS
 5 Maidstone Mews, 72-76 Borough High Street, London SE1 1GN
 T +44(0)20 7357 8788 | F +44(0)20 7403 7887
 E admin@rgarchitects.com | www.rgarchitects.com

DO NOT SCALE FROM THIS DRAWING

DRAWING TO BE READ IN CONJUNCTION WITH ALL OTHER ARCHITECTS AND ENGINEER'S CONTRACT DRAWING & SPECIFICATIONS. ANY DISCREPANCIES MUST BE BROUGHT TO THE ATTENTION OF THE ARCHITECT IMMEDIATELY. THE CONTRACTOR MUST VERIFY ALL DIMENSIONS BY SITE MEASUREMENT BEFORE ORDERING MATERIALS OR MANUFACTURING COMPONENTS. SUBSTITUTE MATERIALS & PRODUCTS TO THOSE NAMED WILL BE ACCEPTABLE IF PROVEN TO BE OF EQUAL OR HIGHER PERFORMANCE AND NOT IN CONFLICT WITH OTHER ELEMENTS.

NOTES
KEY:
Consented Demolition associated with Application ref: 2013/9112/L, 2014/7932/P, 2016/6840/P & 2016/7148/L
Proposed demolition

Note:
For windows and doors please refer to schedules.



ROOF PLAN





REV	DATE	DESCRIPTION
A	30.07.19	For Planning

FOR PLANNING

JOB TITLE		
Keats Grove		
Hampstead		
DRAWING TITLE		
Roof Plan		
Proposed Demolition		
JOB No	DWG No	REV
546	D05	A
DRAWN BY	SCALE (A1)	DATE
RFB	1:50 (1:100@A3)	Oct18

RICHARD GRIFFITHS ARCHITECTS
5 Maidstone Mews, 72-76 Borough High Street, London SE1 1GN
T +44(0)20 7357 8788 | F +44(0)20 7403 7887
E admin@rgarchitects.com | www.rgarchitects.com

DO NOT SCALE FROM THIS DRAWING
 DRAWING TO BE READ IN CONJUNCTION WITH ALL OTHER ARCHITECTS
 AND ENGINEER'S CONTRACT DRAWING & SPECIFICATIONS.
 ANY DISCREPANCIES MUST BE BROUGHT TO THE ATTENTION OF THE
 ARCHITECT IMMEDIATELY.
 THE CONTRACTOR MUST VERIFY ALL DIMENSIONS BY SITE
 MEASUREMENT BEFORE ORDERING MATERIALS OR MANUFACTURING
 COMPONENTS.
 SUBSTITUTE MATERIALS & PRODUCTS TO THOSE NAMED WILL BE
 ACCEPTABLE IF PROVEN TO BE OF EQUAL OR HIGHER PERFORMANCE
 AND NOT IN CONFLICT WITH OTHER ELEMENTS.

NOTES
 KEY:
 Consented Demolition associated with Application
 ref: 2013/5112/L, 2014/7932/P, 2016/6840/P & 2016/7148/L
 Proposed demolition

Note:
 For windows and doors please refer to schedules.



17.0m DATUM
SECTION A-A



REV	DATE	DESCRIPTION

FOR PLANNING

JOB TITLE
**Keats Grove
 Hampstead**
 DRAWING TITLE
**Section AA
 Proposed Demolition**
 JOB No: 546 DWG No: D10 REV: -
 DRAWN BY: RFB SCALE (AT A1): 1:50 (1:100@A3) DATE: Oct18

RICHARD GRIFFITHS ARCHITECTS
 5 Maidstone Mews, 72-76 Borough High Street, London SE1 1GN
 T +44(0)20 7357 8788 | F +44(0)20 7403 7887
 E admin@rgarchitects.com | www.rgarchitects.com

DO NOT SCALE FROM THIS DRAWING

DRAWING TO BE READ IN CONJUNCTION WITH ALL OTHER ARCHITECTS AND ENGINEER'S CONTRACT DRAWING & SPECIFICATIONS. ANY DISCREPANCIES MUST BE BROUGHT TO THE ATTENTION OF THE ARCHITECT IMMEDIATELY. THE CONTRACTOR MUST VERIFY ALL DIMENSIONS BY SITE MEASUREMENT BEFORE ORDERING MATERIALS OR MANUFACTURING COMPONENTS. SUBSTITUTE MATERIALS & PRODUCTS TO THOSE NAMED WILL BE ACCEPTABLE IF PROVEN TO BE OF EQUAL OR HIGHER PERFORMANCE AND NOT IN CONFLICT WITH OTHER ELEMENTS.

NOTES
KEY:
Consented Demolition associated with Application ref: 2013/5112/L, 2014/7932/P, 2016/6840/P & 2016/7148/L
Proposed demolition

Note:
For windows and doors please refer to schedules.



17.0m DATUM

SECTION B-B

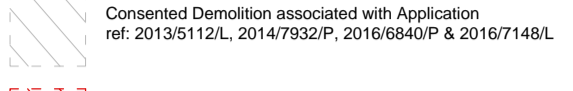
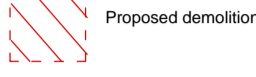
REV DATE DESCRIPTION
A 30.11.18 For planning

FOR PLANNING

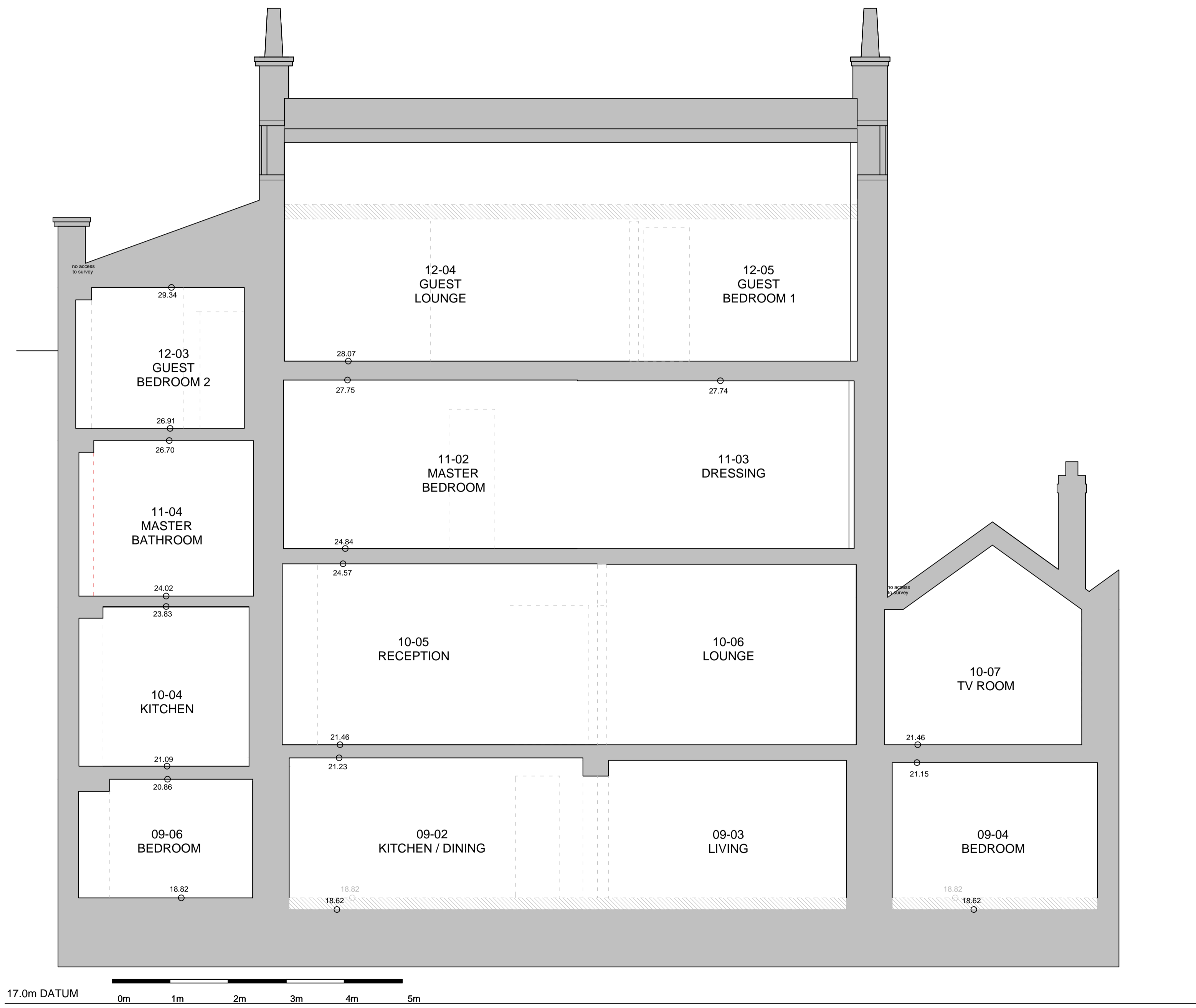
JOB TITLE
Keats Grove
Hampstead
DRAWING TITLE
Section BB
Proposed Demolition
JOB No 546 DWG No D11 REV A
DRAWN BY RFB SCALE (A1) 1:50 (1:100@A3) DATE Oct18

RICHARD GRIFFITHS ARCHITECTS
5 Maidstone Mews, 72-76 Borough High Street, London SE1 1GN
T +44(0)20 7357 8788 | F +44(0)20 7403 7887
E admin@rgarchitects.com | www.rgarchitects.com

DO NOT SCALE FROM THIS DRAWING
 DRAWING TO BE READ IN CONJUNCTION WITH ALL OTHER ARCHITECTS
 AND ENGINEER'S CONTRACT DRAWING & SPECIFICATIONS.
 ANY DISCREPANCIES MUST BE BROUGHT TO THE ATTENTION OF THE
 ARCHITECT IMMEDIATELY.
 THE CONTRACTOR MUST VERIFY ALL DIMENSIONS BY SITE
 MEASUREMENT BEFORE ORDERING MATERIALS OR MANUFACTURING
 COMPONENTS.
 SUBSTITUTE MATERIALS & PRODUCTS TO THOSE NAMED WILL BE
 ACCEPTABLE IF PROVEN TO BE OF EQUAL OR HIGHER PERFORMANCE
 AND NOT IN CONFLICT WITH OTHER ELEMENTS.

NOTES
 KEY:



Note:
 For windows and doors please refer to schedules.



SECTION C-C

REV	DATE	DESCRIPTION

FOR PLANNING

JOB TITLE
Keats Grove
 Hampstead
 DRAWING TITLE
Section CC
 Proposed Demolition
 JOB No: 546 DWG No: D12 REV: -
 DRAWN BY: RFB SCALE (A1): 1:50 (1:100@A3) DATE: Oct18

RICHARD GRIFFITHS ARCHITECTS
 5 Maidstone Mews, 72-76 Borough High Street, London SE1 1GN
 T +44(0)20 7357 8788 | F +44(0)20 7403 7887
 E admin@rgarchitects.com | www.rgarchitects.com



DO NOT SCALE FROM THIS DRAWING
 DRAWING TO BE READ IN CONJUNCTION WITH ALL OTHER ARCHITECTS AND ENGINEER'S CONTRACT DRAWING & SPECIFICATIONS. ANY DISCREPANCIES MUST BE BROUGHT TO THE ATTENTION OF THE ARCHITECT IMMEDIATELY.
 THE CONTRACTOR MUST VERIFY ALL DIMENSIONS BY SITE MEASUREMENT BEFORE ORDERING MATERIALS OR MANUFACTURING COMPONENTS.
 SUBSTITUTE MATERIALS & PRODUCTS TO THOSE NAMED WILL BE ACCEPTABLE IF PROVEN TO BE OF EQUAL OR HIGHER PERFORMANCE AND NOT IN CONFLICT WITH OTHER ELEMENTS.

NOTES
 KEY:

 Note:
 For windows and doors please refer to schedules.

17.0m DATUM
 0m 1m 2m 3m 4m 5m

SECTION D-D

REV DATE DESCRIPTION
 A 30.07.19 For Planning

FOR PLANNING

JOB TITLE
Keats Grove
 Hampstead

DRAWING TITLE
Section DD
 Proposed Demolition

JOB No	DWG No	REV
546	D13	A
DRAWN BY	SCALE (AT A1)	DATE
RFB	1:50 (1:100@A3)	Oct18

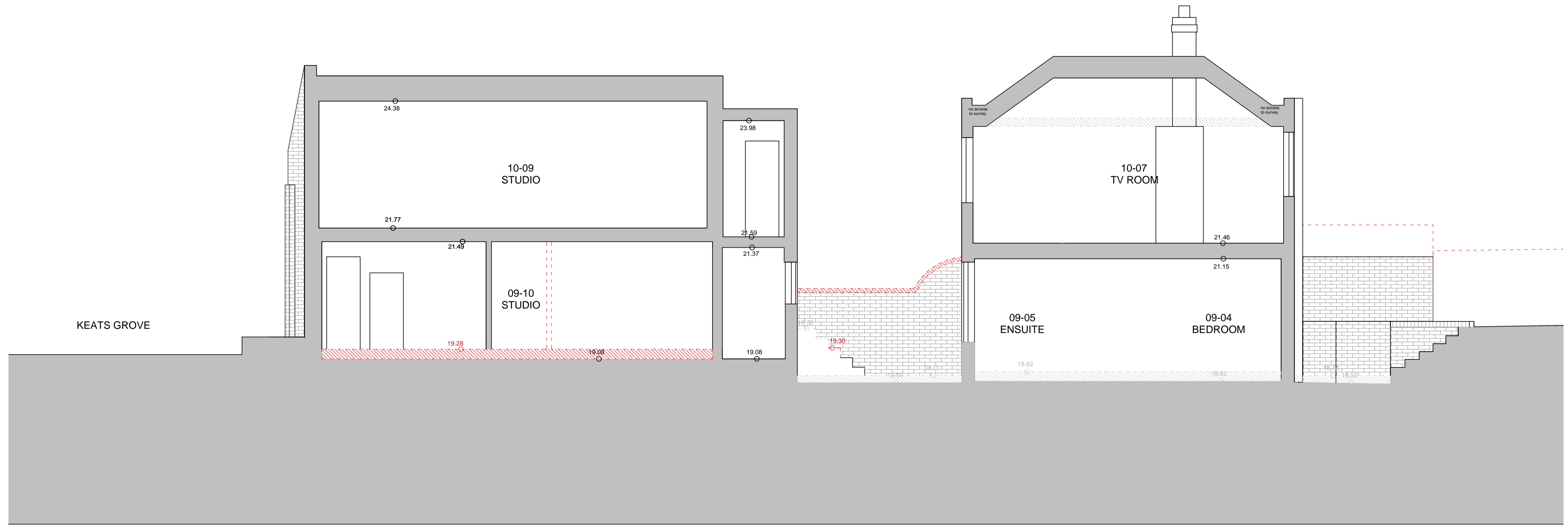
RICHARD GRIFFITHS ARCHITECTS
 5 Maidstone Mews, 72-76 Borough High Street, London SE1 1GN
 T +44(0)20 7357 8788 | F +44(0)20 7403 7887
 E admin@rgarchitects.com | www.rgarchitects.com

DO NOT SCALE FROM THIS DRAWING

DRAWING TO BE READ IN CONJUNCTION WITH ALL OTHER ARCHITECTS AND ENGINEER'S CONTRACT DRAWING & SPECIFICATIONS. ANY DISCREPANCIES MUST BE BROUGHT TO THE ATTENTION OF THE ARCHITECT IMMEDIATELY. THE CONTRACTOR MUST VERIFY ALL DIMENSIONS BY SITE MEASUREMENT BEFORE ORDERING MATERIALS OR MANUFACTURING COMPONENTS. SUBSTITUTE MATERIALS & PRODUCTS TO THOSE NAMED WILL BE ACCEPTABLE IF PROVEN TO BE OF EQUAL OR HIGHER PERFORMANCE AND NOT IN CONFLICT WITH OTHER ELEMENTS.

NOTES
KEY:
Consented Demolition associated with Application ref: 2013/9112/L, 2014/7932/P, 2016/6840/P & 2016/7148/L
Proposed demolition

Note:
For windows and doors please refer to schedules.



KEATS GROVE

15.0m DATUM
0m 1m 2m 3m 4m 5m

SECTION F-F

REV	DATE	DESCRIPTION
A	30.07.19	For Planning

FOR PLANNING


JOB TITLE
Keats Grove
Hampstead

DRAWING TITLE
Section FF
Proposed Demolition

JOB No	DWG No	REV
546	D15	A
DRAWN BY	SCALE (A4/A1)	DATE
RFB	1:50 (1:100@A3)	Oct18

RICHARD GRIFFITHS ARCHITECTS
5 Maidstone Mews, 72-76 Borough High Street, London SE1 1GN
T +44(0)20 7357 8788 | F +44(0)20 7403 7887
E admin@rgarchitects.com | www.rgarchitects.com

DO NOT SCALE FROM THIS DRAWING
 DRAWING TO BE READ IN CONJUNCTION WITH ALL OTHER ARCHITECTS AND ENGINEER'S CONTRACT DRAWING & SPECIFICATIONS. ANY DISCREPANCIES MUST BE BROUGHT TO THE ATTENTION OF THE ARCHITECT IMMEDIATELY.
 THE CONTRACTOR MUST VERIFY ALL DIMENSIONS BY SITE MEASUREMENT BEFORE ORDERING MATERIALS OR MANUFACTURING COMPONENTS.
 SUBSTITUTE MATERIALS & PRODUCTS TO THOSE NAMED WILL BE ACCEPTABLE IF PROVEN TO BE OF EQUAL OR HIGHER PERFORMANCE AND NOT IN CONFLICT WITH OTHER ELEMENTS.

NOTES
KEY:

 Consented Demolition associated with Application ref: 2013/5112/L, 2014/7932/P, 2016/6840/P & 2016/7148/L
 Proposed demolition

Note:
 For windows and doors please refer to schedules.



17.0m DATUM
 0m 1m 2m 3m 4m 5m

SECTION G-G

REV	DATE	DESCRIPTION
A	30.11.18	For planning

FOR PLANNING

JOB TITLE
 Keats Grove
 Hampstead

DRAWING TITLE
 Section GG
 Proposed Demolition

JOB No 546	DWG No D16	REV A
DRAWN BY RFB	SCALE (A1/A3) 1:50 (1:100@A3)	DATE Oct18

RICHARD GRIFFITHS ARCHITECTS
 5 Maidstone Mews, 72-76 Borough High Street, London SE1 1GN
 T +44(0)20 7357 8788 | F +44(0)20 7403 7887
 E admin@rgarchitects.com | www.rgarchitects.com

DO NOT SCALE FROM THIS DRAWING

DRAWING TO BE READ IN CONJUNCTION WITH ALL OTHER ARCHITECTS AND ENGINEER'S CONTRACT DRAWING & SPECIFICATIONS. ANY DISCREPANCIES MUST BE BROUGHT TO THE ATTENTION OF THE ARCHITECT IMMEDIATELY. THE CONTRACTOR MUST VERIFY ALL DIMENSIONS BY SITE MEASUREMENT BEFORE ORDERING MATERIALS OR MANUFACTURING COMPONENTS. SUBSTITUTE MATERIALS & PRODUCTS TO THOSE NAMED WILL BE ACCEPTABLE IF PROVEN TO BE OF EQUAL OR HIGHER PERFORMANCE AND NOT IN CONFLICT WITH OTHER ELEMENTS.

NOTES
KEY:
Consented Demolition associated with Application ref: 2013/5112/L, 2014/7932/P, 2016/6840/P & 2016/7148/L
Proposed demolition

Note:
For windows and doors please refer to schedules.



EAST ELEVATION

REV DATE DESCRIPTION

FOR PLANNING

JOB TITLE
Keats Grove
Hampstead
DRAWING TITLE
East Elevation
Proposed Demolition
JOB No: 546
DWG No: D21
SCALE (A4): 1:50 (1:100@A3)
DATE: Oct18

RICHARD GRIFFITHS ARCHITECTS
5 Maidstone Mews, 72-76 Borough High Street, London SE1 1GN
T +44(0)20 7357 8788 | F +44(0)20 7403 7887
E admin@rgarchitects.com | www.rgarchitects.com

DO NOT SCALE FROM THIS DRAWING

DRAWING TO BE READ IN CONJUNCTION WITH ALL OTHER ARCHITECTS AND ENGINEER'S CONTRACT DRAWING & SPECIFICATIONS. ANY DISCREPANCIES MUST BE BROUGHT TO THE ATTENTION OF THE ARCHITECT IMMEDIATELY. THE CONTRACTOR MUST VERIFY ALL DIMENSIONS BY SITE MEASUREMENT BEFORE ORDERING MATERIALS OR MANUFACTURING COMPONENTS. SUBSTITUTE MATERIALS & PRODUCTS TO THOSE NAMED WILL BE ACCEPTABLE IF PROVEN TO BE OF EQUAL OR HIGHER PERFORMANCE AND NOT IN CONFLICT WITH OTHER ELEMENTS.

NOTES
KEY:
Consented Demolition associated with Application ref: 2013/5112/L, 2014/7932/P, 2016/6840/P & 2016/7148/L
Proposed demolition

Note:
For windows and doors please refer to schedules.



17.0m DATUM

SOUTH ELEVATION

REV DATE DESCRIPTION

FOR PLANNING

JOB TITLE
Keats Grove
Hampstead
DRAWING TITLE
South Elevation
Proposed Demolition
JOB No 546 DWG No D22 REV -
DRAWN BY RFB SCALE (A4) 1:50 (1:100@A3) DATE Oct18

RICHARD GRIFFITHS ARCHITECTS

5 Maidstone Mews, 72-76 Borough High Street, London SE1 1GN
T +44(0)20 7357 8788 | F +44(0)20 7403 7887
E admin@rgarchitects.com | www.rgarchitects.com