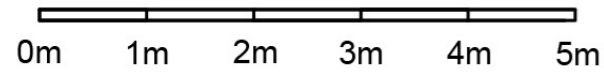
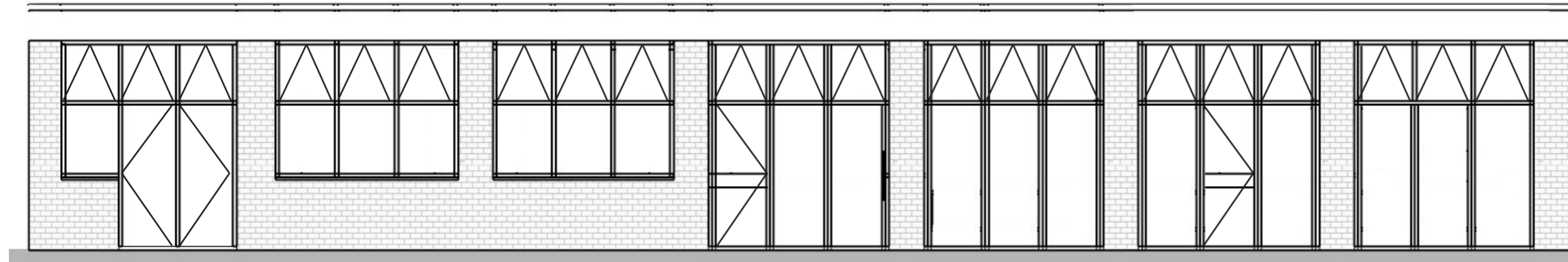


## ELEVATION-01 EXISTING



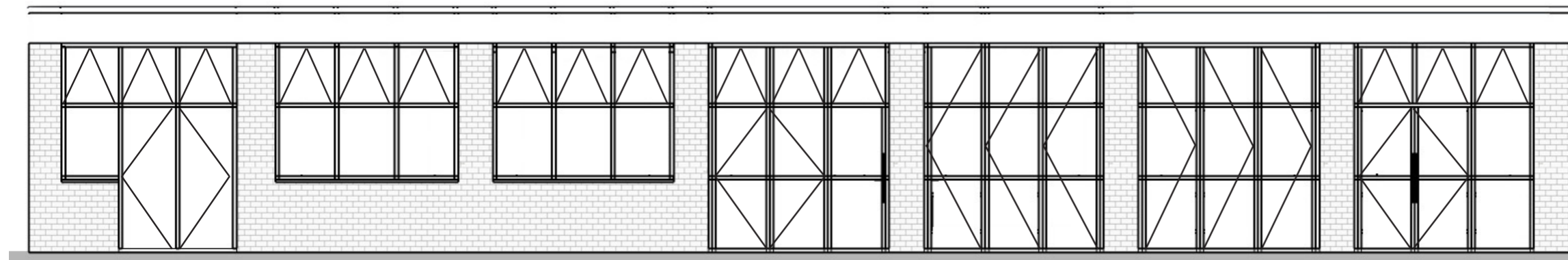
Bay 7.4	Bay 7.3	Bay 7.2	Bay 7.1	Bay 6.3	Bay 6.2	Bay 6.1
2 x solid doors 1 x fixed window 3 x opening lights	3 x fixed windows 3 x opening lights	3 x fixed windows 3 x opening lights	1 x glazed door 2 x fixed windows 3 x opening lights	3 x fixed windows 3 x opening lights	1 x glazed door 2 x fixed windows 3 x opening lights	3 x fixed windows 3 x opening lights



Existing materials (to 6&7 Coleridge Gardens)

Steel casement frames, overall 100mm wide  
Single glazed  
Colour - white

## ELEVATION-01 PROPOSED



Bay 7.4	Bay 7.3	Bay 7.2	Bay 7.1	Bay 6.3	Bay 6.2	Bay 6.1
2 x solid doors 1 x fixed window 3 x opening lights	3 x fixed windows 3 x opening lights	3 x fixed windows 3 x opening lights	1 x glazed double door 1 x fixed window 3 x opening lights	1 x glazed door 2 x bi-fold windows	1 x glazed door 2 x bi-fold windows	1 x glazed double door 1 x fixed window 3 x opening lights



Proposed materials (similar to the neighbouring building at 4-5 Coleridge Gardens)

Aluminium casement frames, overall 90mm wide  
Double glazed  
Colour - dark grey, RAL 702

