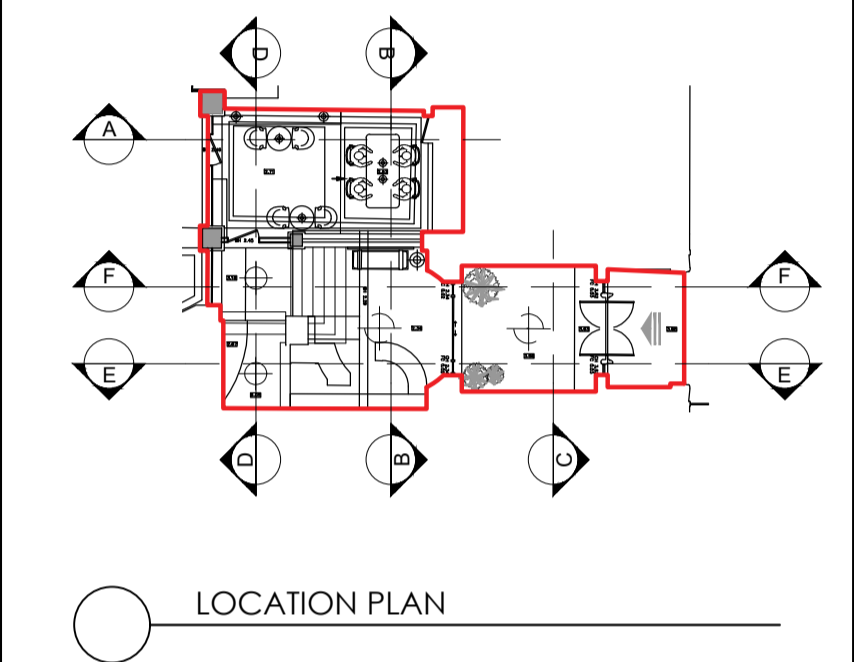


**GENERAL NOTES**

DO NOT SCALE FROM THIS DRAWING  
 SOHO HOUSE TO APPROVE ALL FINISHES SAMPLES AND SHOP DRAWINGS PRIOR TO MANUFACTURE.  
 ALL DIMENSIONS DISCREPANCIES TO BE REPORTED TO SOHO HOUSE PRIOR TO MANUFACTURE.

**REVISIONS**

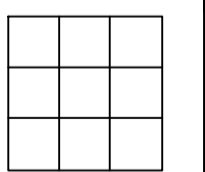
DATE (DD/MM/YY)	REVISION	DESCRIPTION / COMMENT



**PLANNING ISSUE**

1. THE DRAWING SHOWS DESIGN INTENT ONLY. ALL DIMENSIONS TO BE CHECKED ON SITE PRIOR TO CONSTRUCTION OR PRODUCTION. SHOP DRAWINGS TO BE ISSUED TO BY CONTRACTOR/MANUFACTURER FOR DESIGNERS APPROVAL. ANY DISCREPANCIES TO BE RELATED TO SHD BEFORE WORKS COMMENCES.
  2. DESIGN/DRAWING IS NOT TO BE SCALED FOR PRODUCTION AND CONSTRUCTION PURPOSES.
  3. ALL MATERIALS AND CONSTRUCTION TO BE MANUFACTURED TO A HIGH QUALITY OF WORKMANSHIP SUITABLE FOR COMMERCIAL USE.
  4. ALL FINISHES TO BE APPROVED BY SH VIA SAMPLING PROCEDURE.
  5. CONTRACTOR/MANUFACTURER SHOP DRAWINGS TO SHOW ALL EQUIPMENT INCLUDING ELECTRICAL, PLUMBING, ELECTRONICAL ETC. THAT ARE INCORPORATED AND TO BE COORDINATED WITH ENGINEERS DRAWINGS/OTHER TRADES PRIOR TO COMMENCEMENT OF WORKS.
  6. DESIGNS ARE SUBJECT TO APPROVAL BY STATUTORY AUTHORITIES AND ANY NECESSARY ALTERATIONS SHOULD BE MADE IF REQUIRED TO COMPLY WITH STATUTORY REQUIREMENTS. ALL MATERIALS AND ELECTRICAL WIRING MUST MEET LOCAL AUTHORITY STANDARDS INCLUDING FIRE TREATMENT.
  7. ALL DESIGN CONCEPTS AND DRAWINGS ARE THE PROPERTY OF SOHO HOUSE. DESIGN AND DEVELOPMENT AND ARE COVERED BY COPYRIGHT. NO REPRODUCTIONS, ADAPTATIONS AND/OR COPIES MAY BE MADE WITHOUT WRITTEN PERMISSION BY SOHO HOUSE. DESIGN AND DEVELOPMENT.
  8. MANUFACTURER TO ENSURE STABILITY & FUNCTIONALITY OF ITEMS, RAISING ANY CONCERNS DIRECTLY WITH SH IMMEDIATELY.
  9. MANUFACTURER TO CHECK SITE ACCESS BEFORE MANUFACTURE AND INSTALLATION. ITEM TO BE DIS-ASSEMBLED AND RE-ASSEMBLED ON SITE IF NECESSARY.
  10. ALL METALWORK TO BE GROUND AND POLISHED SMOOTHLY WITH NO SHARP EDGES OR CORNERS. ALL JOINTS TO BE CLEANED, WELDED AND GROUND DOWN TO MINIMUM. ALL METAL PARTS MUST BE TREATED TO PREVENT RUST OR CORROSION UNLESS OTHERWISE STATED.
  11. WHENEVER 'MDP' BOARD IS SPECIFIED, SUBSTITUTE WITH MEDIUM DENSITY PARTICLE BOARD.
  12. PROTECTIVE METAL NYLON FELT GLIDES ARE TO BE FITTED TO UNDERSIDE OF FEET OF ALL PIECES. NOT TO BE VISIBLE. TYPE OF GLIDE TO BE APPROVED BY SH.
  13. GENERAL CONTRACTOR TO CO-ORDINATE WITH LIGHTING CONTRACTOR FOR LOCATION AND METHOD OF MOUNTING ALL LIGHT FIXTURES. STOCK OR CUSTOM MADE.
  14. MANUFACTURER TO ADVISE STITCHING LOCATION AND DETAIL IF NOT SPECIFIED, SH TO APPROVE SAMPLE.
  15. SH TO APPROVE BATCH COLOUR SAMPLE OF LEATHER/FABRIC AND PROVIDE STITCHING SAMPLE.
- ALL DIMENSIONS ARE FINISHED DIMENSIONS AND NOT CARCASS DIMENSIONS  
 -PROTOTYPE OR AGREED PROTOTYPE SECTION REQUIRED FOR SH APPROVAL

**SOHO HOUSE**  
 DESIGN

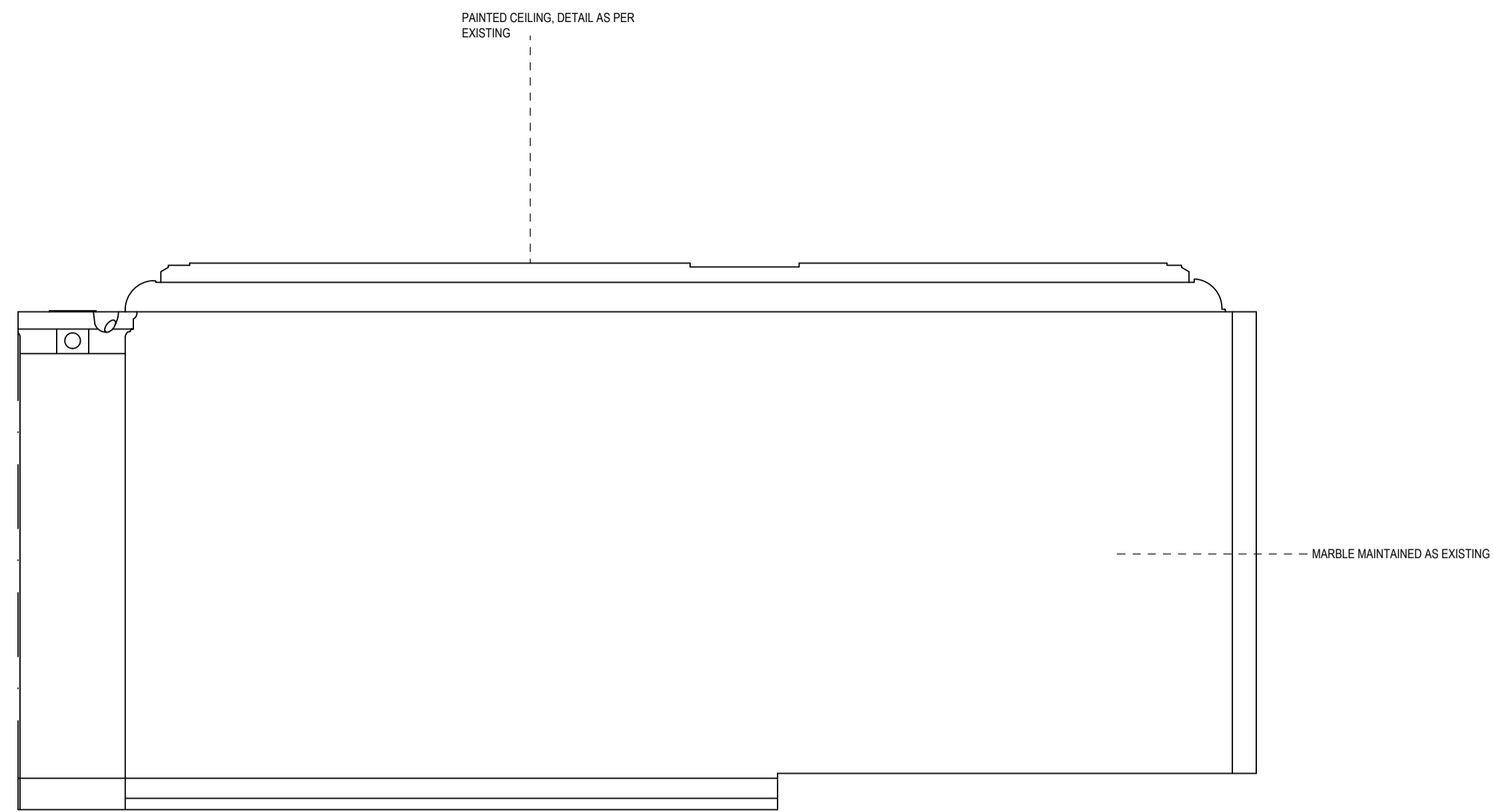


**65 KINGSWAY ROAD**

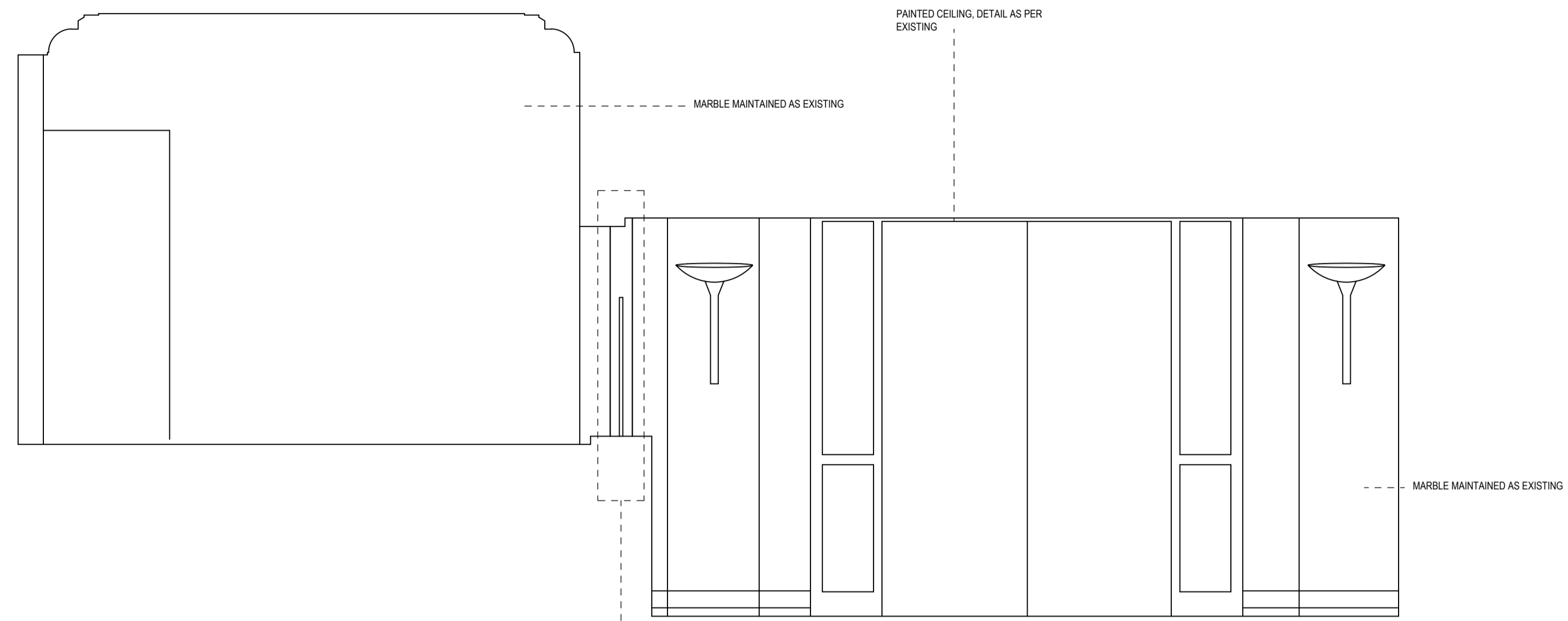
**PROPOSED GROUND ELEVATIONS  
 ENTRANCE**

Scale	Page	Checked By	Drawn By	Date
1:25@A1 1:50@A3	01 OF 02	/	ME	09/07/19

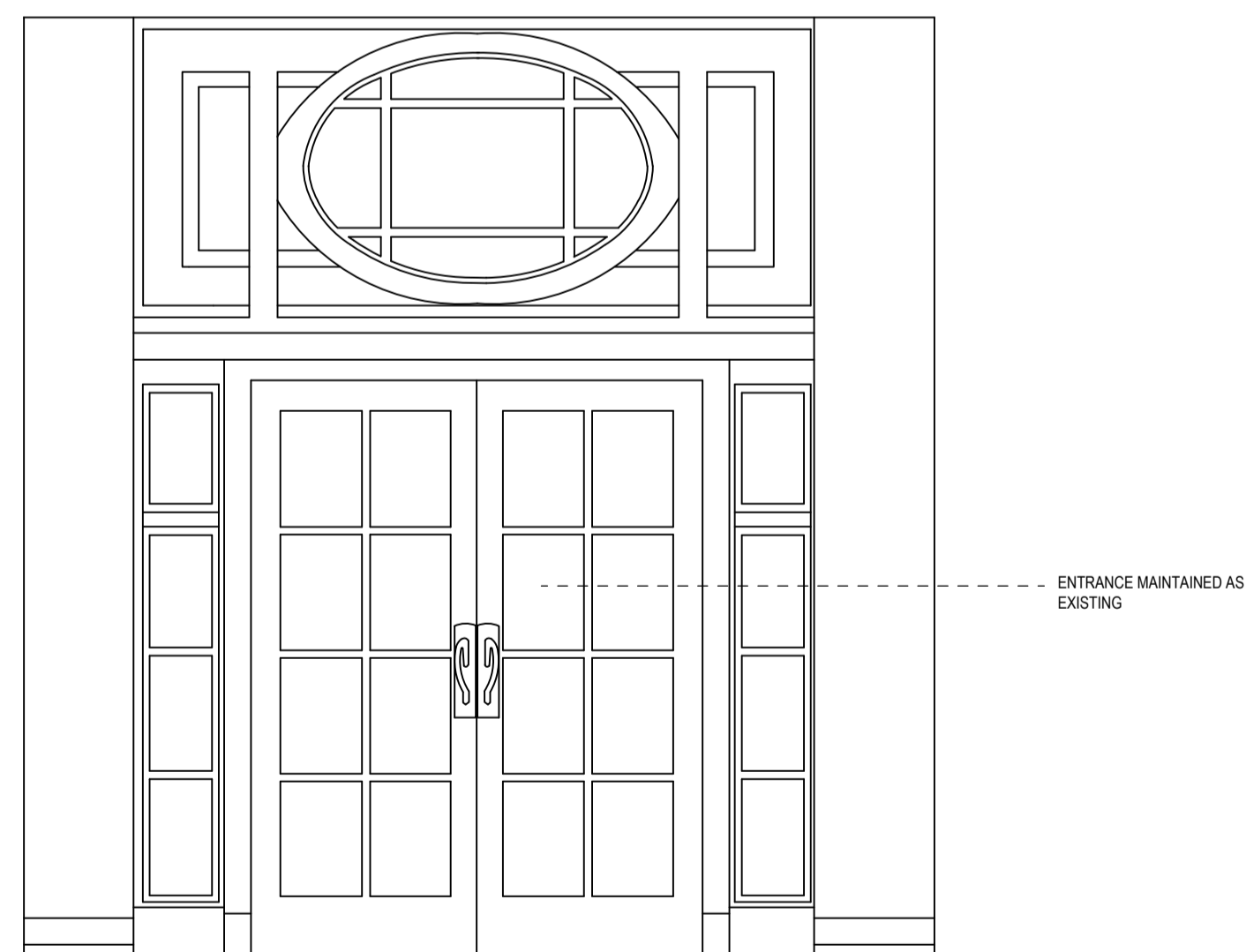
Drawing Number:	Rev
819_SH_EL_00_01	/



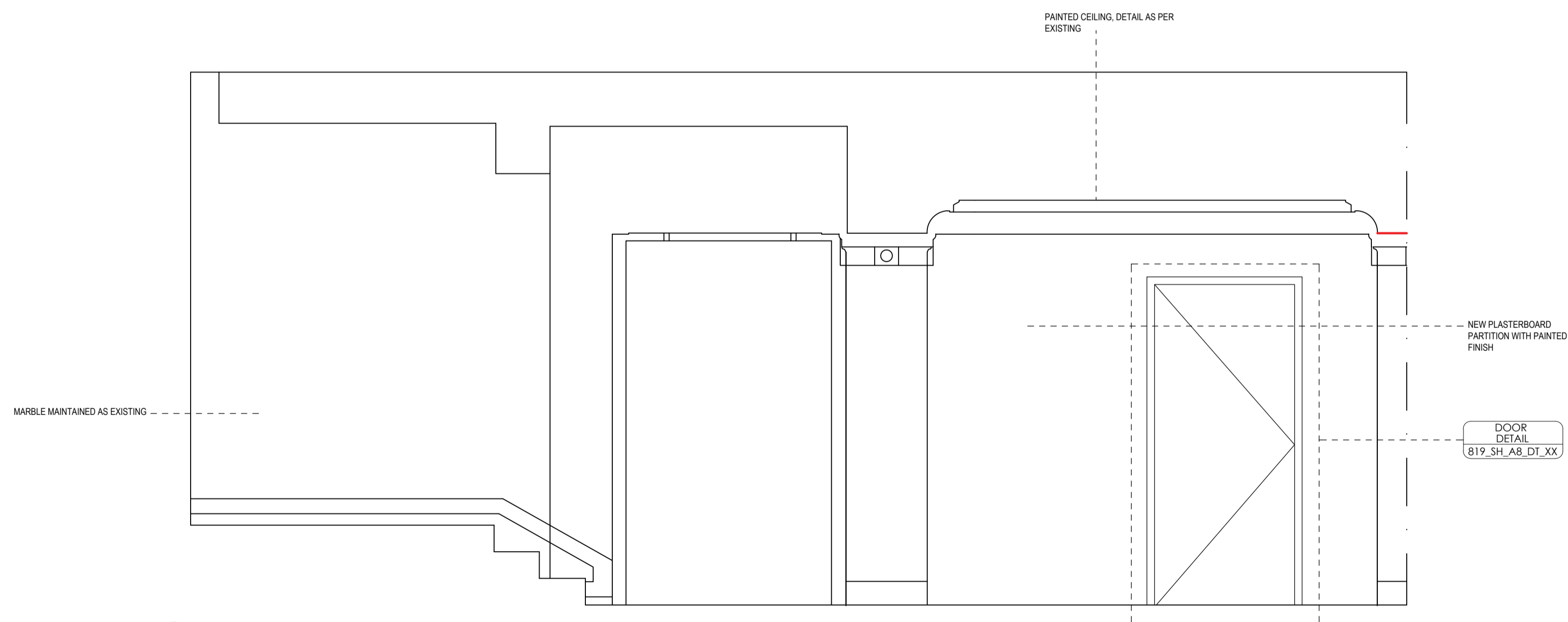
**A** ELEVATION  
 SCALE: 1:25



**B** ELEVATION  
 SCALE: 1:25



**C** ELEVATION  
 SCALE: 1:25



**D** ELEVATION  
 SCALE: 1:25