

Orms

Project

St Giles Circus

Title

21 Denmark Street Arcade New Brickwork

Client

Consolidated Developments

Date

1st August 2019





Brickwork

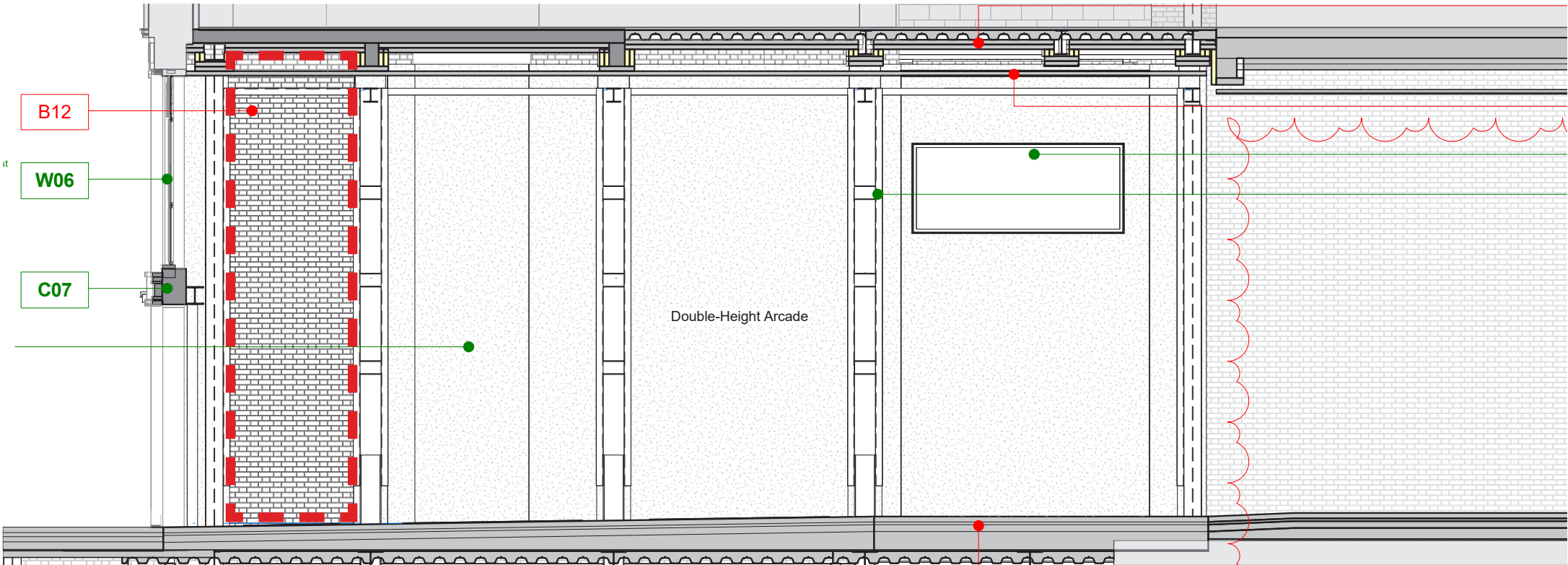
Brickwork

21 Denmark Street New Masonry

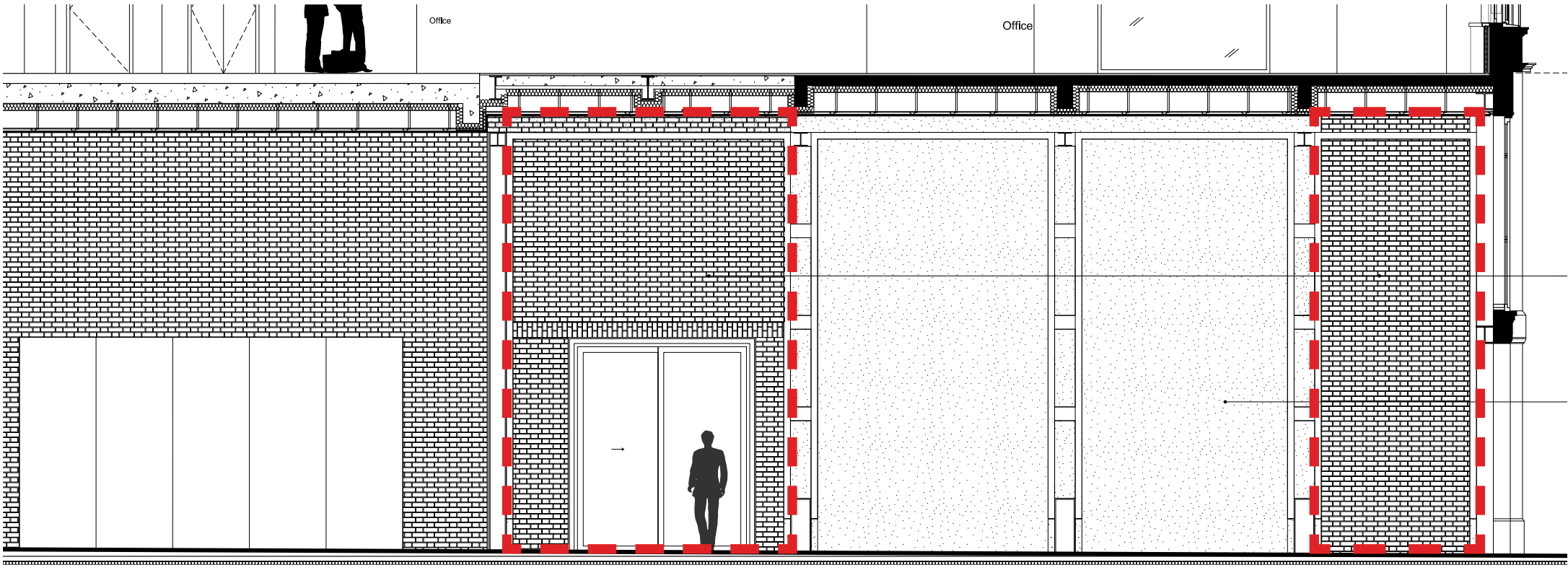
This document sets of the extent and the type of white glazed brickwork proposed to be used at the residential entrance and the front bay of the arcade.

 Extent of white glazed brickwork





20 Denmark Street Party Wall



21 Denmark Street Party Wall

Brick Type A1

White Glazed // English Bond



Brick Types A1



PRODUCT TECHNICAL INFORMATION SHEET

PRODUCT NAME : GLAZED – WHITE
REF. CODE : 11029110 (PANNINGEN)
DESCRIPTION : GLAZED
MANUFACTURE : EXTRUSION
APPEARANCE : SMOOTH
CONFIGURATION : PERFORATED – 20 HOLES VERTICAL

WORK SIZE* : 215 x 102 x 65mm

GUARANTEED PROPERTIES	EN771-1 : 2003
COMPRESSIVE STRENGTH	: MIN. 50N/mm ²
WATER ABSORPTION	: MAX. 2%
DURABILITY DESIGNATION	: F2
ACTIVE SOLUBLE SALTS	: S2
SIZE TOLERANCE * (/ RANGE)	: T2 – R2
GROSS DENSITY (Tolerance)	: 1700Kg/m ³ (D1)
NET DENSITY (Tolerance)	: 1800Kg/m ³ (D1)
THERMAL CONDUCTIVITY (λ ₁₀ ,dry)	: P=90% 0.55 W/m.K
INITIAL RATE OF WATER ABS.	: 0.1/m ² .minute
BOND STRENGTH (General Mortar)	: 0.15 N/mm ² (fixed value)
REACTION TO FIRE	: Class A1
WATER VAPOUR PERMEABILITY (μ):	: 5/10 (tabulated)
PACK QUANTITY	: 384 no
PACK SIZE (APPROX. mm)	: 860 x 845 x 820 H
TYPICAL PACK WEIGHT	: 931 Kg

ISSUE : JANUARY 2012



