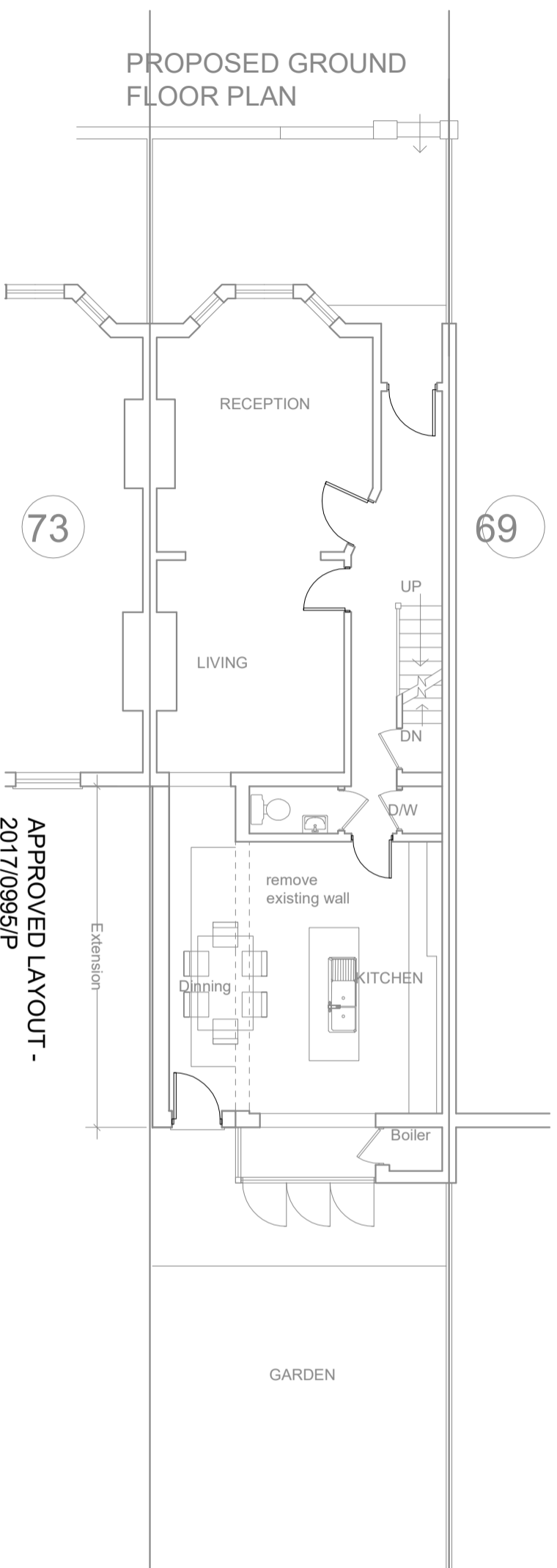


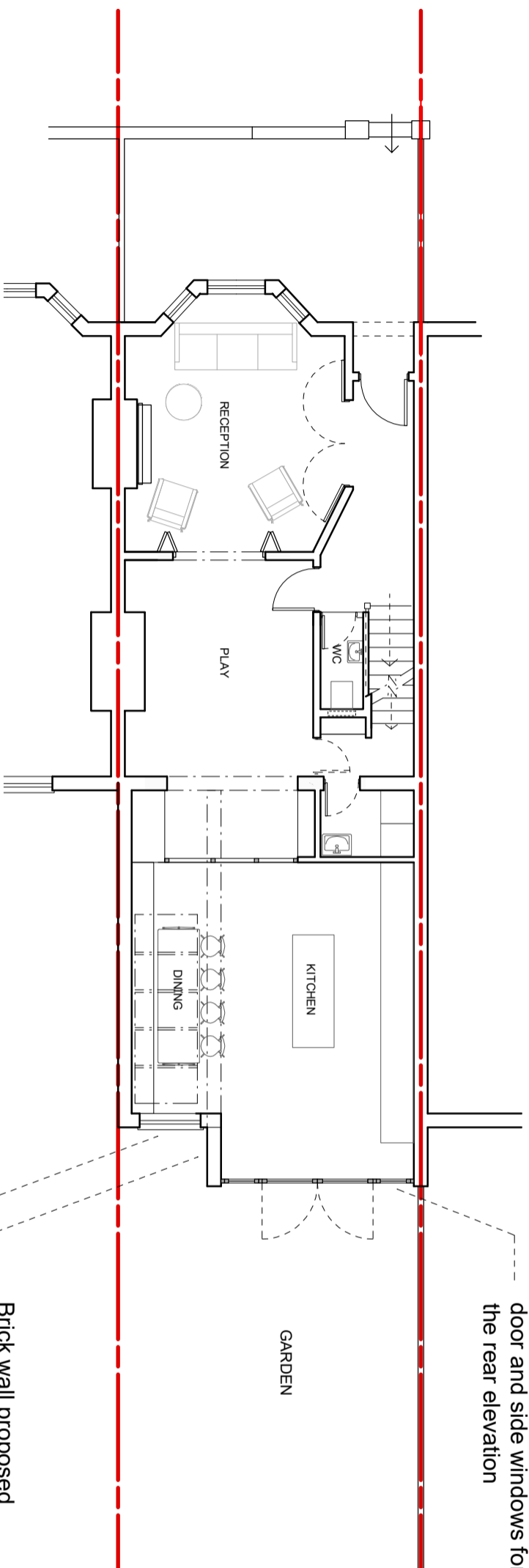
To be read in conjunction with all relevant documents
 In the event of discrepancy notify the Architect immediately
 This document is copyright of Hugh Cullum Architects Ltd

Issue Status
 SK Information F Feasibility D Design
 P Permissions S Scheme T Tender
 C Construction E Existing Condition

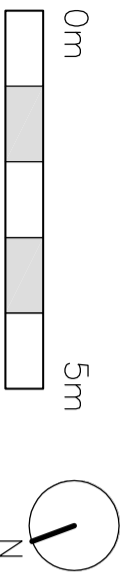
 Site Boundary Line



APPROVED LAYOUT -
2017/0995/P



PROPOSED VARIATION



PROPOSED VARIATION _ Ground Floor Layout

(L): Revised Glazing on side extension (16.07.19/OA)
 (L): Issued for Planning (17.05.19/OA)
 Revision: Information (date/drawn by)

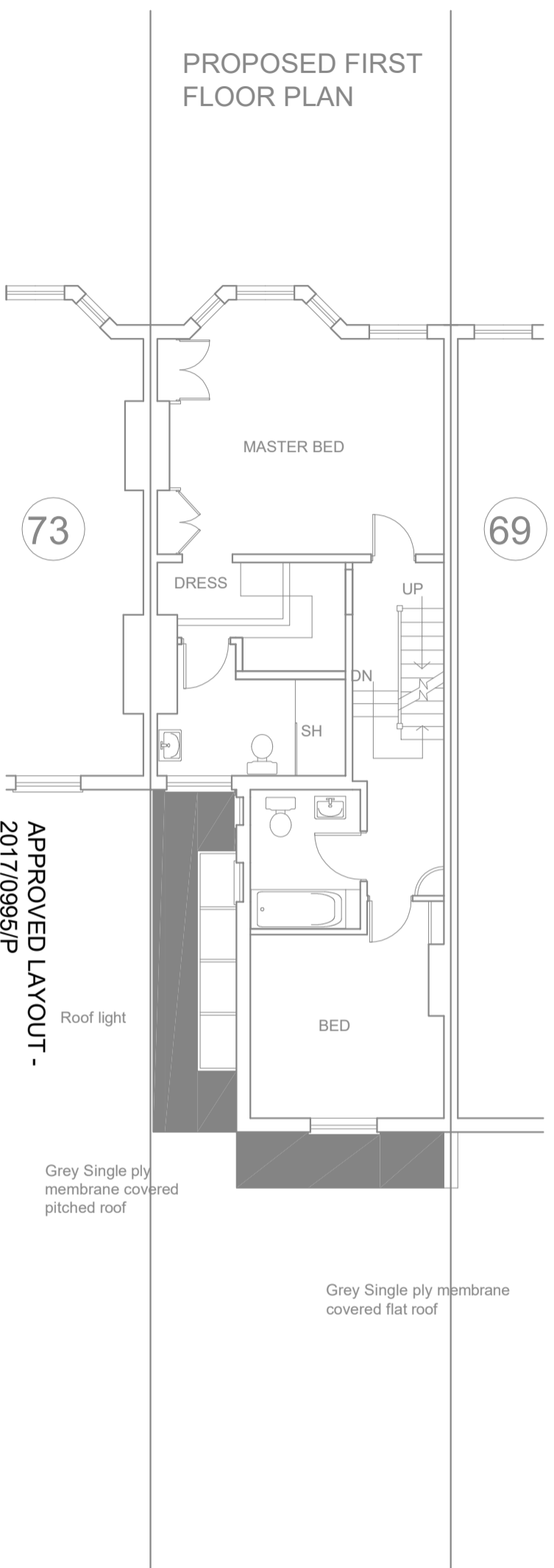
HUGH CULLUM 71 Roderick Road
 ARCHITECTS LTD
 Bloomsbury Design
 61b Judd Street
 London WC1H 9QT
 t 020 7383 7647
 f 020 7387 7645
 mail@hughcullum.com

Planning - Variation
 First Floor
 1:100@A3 May 2019
RR071-P100(A)

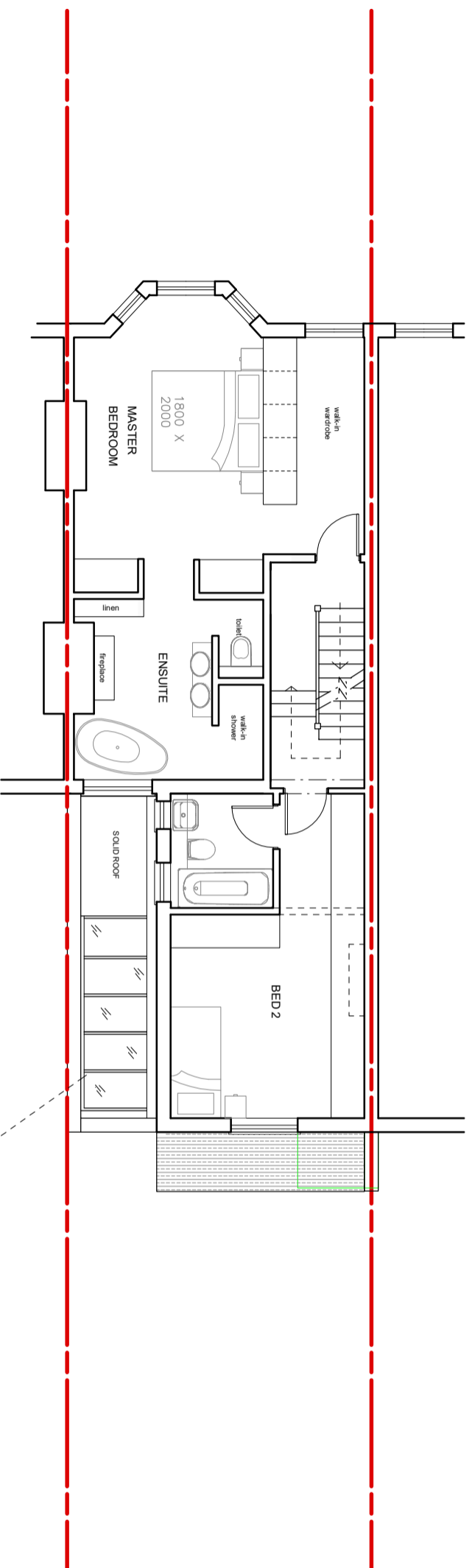
To be read in conjunction with all relevant documents
 In the event of discrepancy notify the Architect immediately
 This document is copyright of Hugh Cullum Architects Ltd

Issue Status
 SK Information F Feasibility D Design
 P Permissions S Scheme T Tender
 C Construction E Existing Condition

Site Boundary Line

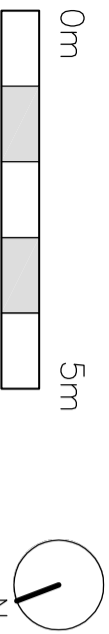


APPROVED LAYOUT -
 2017/0995/P



PROPOSED VARIATION

Proposed part glazed
 roof over the side
 extension

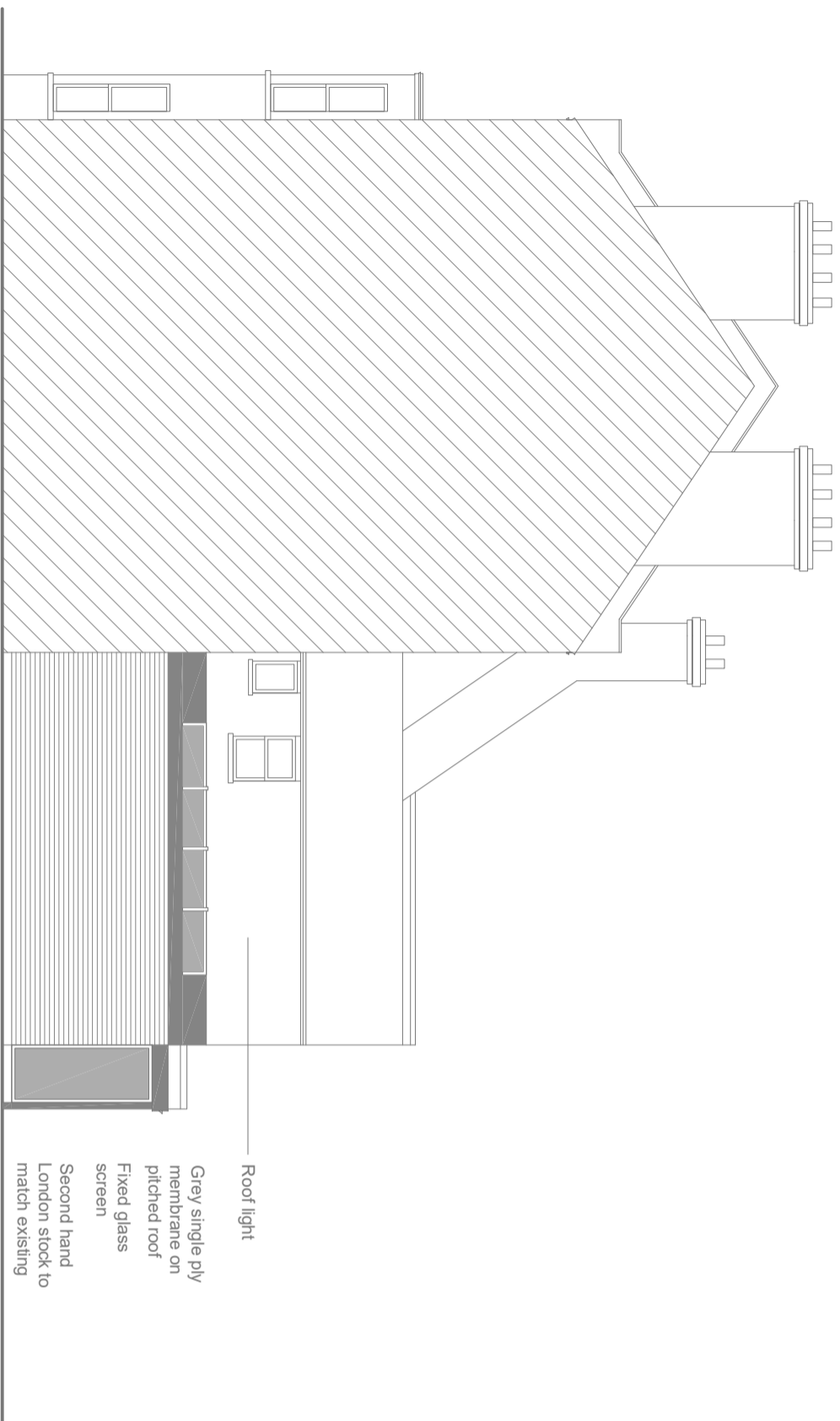


PROPOSED VARIATION _ First Floor Layout

(L): Revised Glazing on side extension (16.07.19/OA)
 (L): Issued for Planning (17.05.19/OA)
 Revision: Information (date/drawn by)

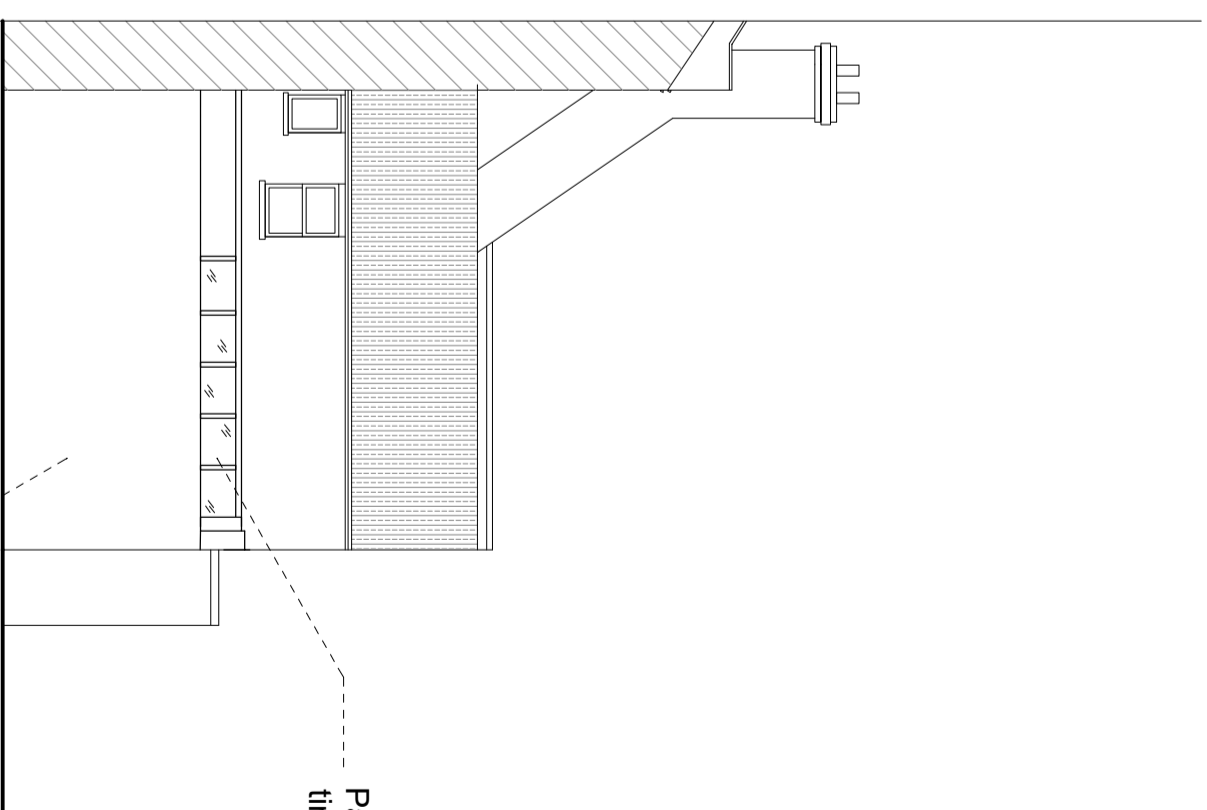
HUGH CULLUM 71 Roderick Road
 ARCHITECTS LTD
 Bloomsbury Design
 61b Judd Street
 London WC1H 9QT
 t 020 7383 7647
 f 020 7387 7645
 mail@hughcullum.com

Planning - Variation
 First Floor
 1-100@A3 May 2019
RR071-P101(A)



**PROPOSED SIDE ELEVATION
(NORTH FACING)**

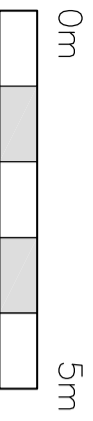
**APPROVED LAYOUT -
2017/0995/P**



PROPOSED VARIATION

**Brick reveal and side
wall with second
hand London stock
to match existing**

**Part glazed Roof with
timber rafters**



PROPOSED VARIATION _ Side Elevation

General Notes

Do not scale from this drawing
All dimensions to be verified on site
To be read in conjunction with all relevant documents
In the event of discrepancy notify the Architect immediately
This document is copyright of Hugh Cullum Architects Ltd

Issue Status
SK Information F Feasibility D Design
P Permissions S Scheme T Tender
C Construction E Existing Condition

(): Revised Glazing on side extension (16.07.19/OA)

(): Issued for Planning (17.05.19/OA)

Revision: Information (date/drawn by)

**HUGH CULLUM
ARCHITECTS LTD**
Bloomsbury Design
61b Judd Street
London WC1H 9QT
t 020 7383 7647
f 020 7387 7645
mail@hughcullum.com

71 Roderick Road
Planning - Variation
Side Elevation
1:100@A3 May 2019
RR071-P122(A)