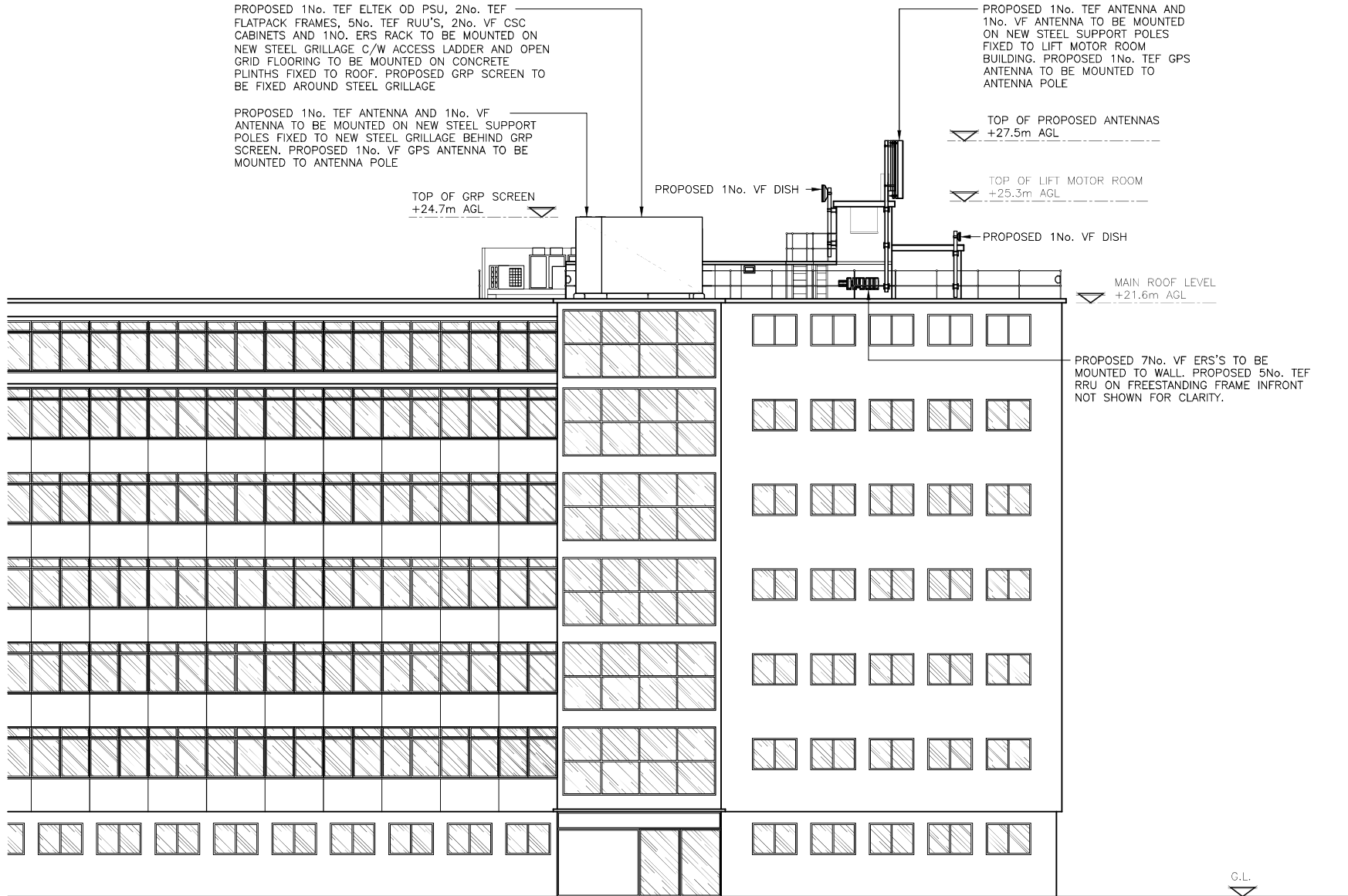


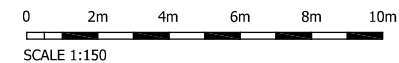
PROPOSED 1No. TEF ELTEK OD PSU, 2No. TEF FLATPACK FRAMES, 5No. TEF RUU'S, 2No. VF CSC CABINETS AND 1No. ERS RACK TO BE MOUNTED ON NEW STEEL GRILLAGE C/W ACCESS LADDER AND OPEN GRID FLOORING TO BE MOUNTED ON CONCRETE PLINTHS FIXED TO ROOF. PROPOSED GRP SCREEN TO BE FIXED AROUND STEEL GRILLAGE

PROPOSED 1No. TEF ANTENNA AND 1No. VF ANTENNA TO BE MOUNTED ON NEW STEEL SUPPORT POLES FIXED TO NEW STEEL GRILLAGE BEHIND GRP SCREEN. PROPOSED 1No. VF GPS ANTENNA TO BE MOUNTED TO ANTENNA POLE

PROPOSED 1No. TEF ANTENNA AND 1No. VF ANTENNA TO BE MOUNTED ON NEW STEEL SUPPORT POLES FIXED TO LIFT MOTOR ROOM BUILDING. PROPOSED 1No. TEF GPS ANTENNA TO BE MOUNTED TO ANTENNA POLE



PROPOSED SOUTH-WEST ELEVATION
(1:100)



The drawings comply with TEF & Vodafone Standard ICNIRP guidelines.
Designed in accordance with CTIL document: SDN0008

ALL DIMENSIONS ARE IN mm UNLESS NOTED OTHERWISE

N.G.R E: 528550 N: 183981

CONCESSION REQUIRED NO

NOTES:

REV	MODIFICATION	BY	CH	DATE
C	VF Dishes Added	JS	JL	17.07.19
B	Sector 3 Antenna's and Equipment Moved	JS	JL	28.06.19
A	Issued for Approval	GB	CT	30.04.19



Cell Name		Opt.
ACADEMIC HOUSE		-
Cell ID No		
CTIL	TEF	VF
148390	41812	36725

Site Address / Contact Details
ACADEMIC HOUSE
22-24 OVAL ROAD
LONDON
NW1 7DT

Drawing Title: PROPOSED SOUTH-WEST ELEVATION			
Purpose of Issue: PLANNING			Dwg Rev:
Drawing Number: 301			C
Surveyed By: CT	Original Sheet Size: A3		Pack Issue:
Drawn: GB	Date: 30.04.19	Checked: CT	Date: 30.04.19