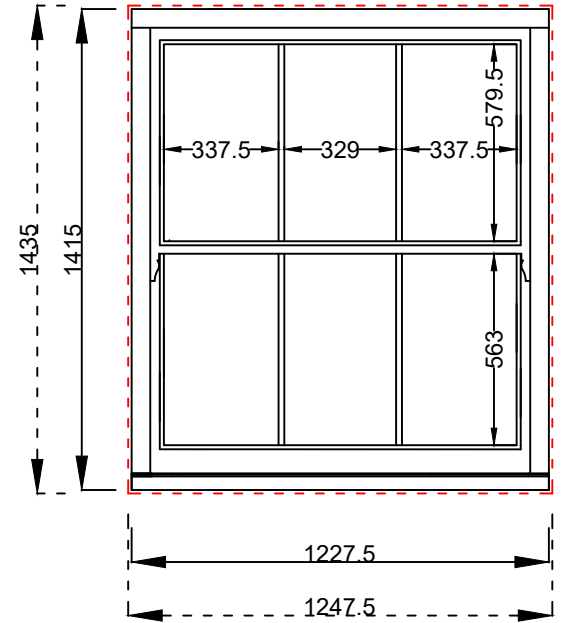


**GLASS**  
6.8mm LAM - 16mm AR - 4mm (Bomb Spec)

**TIMBER**  
Engineered Redwood (Red Grandis Cill)

**PAINT**  
Teknos - Colour TBC



**PROPOSED FRONT ELEVATION**

W/01/02, W/01/01, W/02/02, W/02/01, W/03/02, W/03/01

Project:  
TORRINGTON SQ.

Drawn By:  
Axel

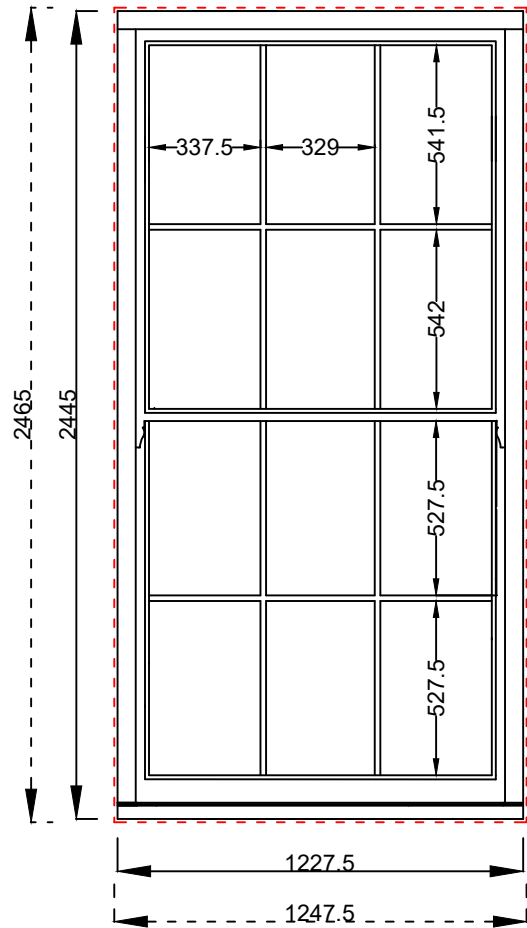
App By:  
SW

Dwg No:  
N/A

Rev No:  
N/A

Rev No:  
N/A

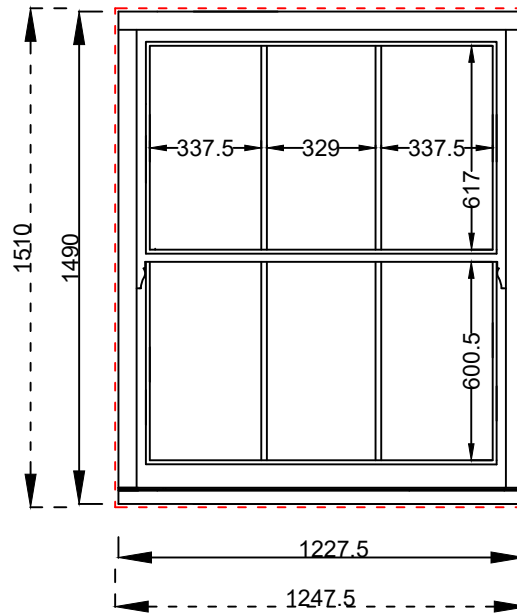




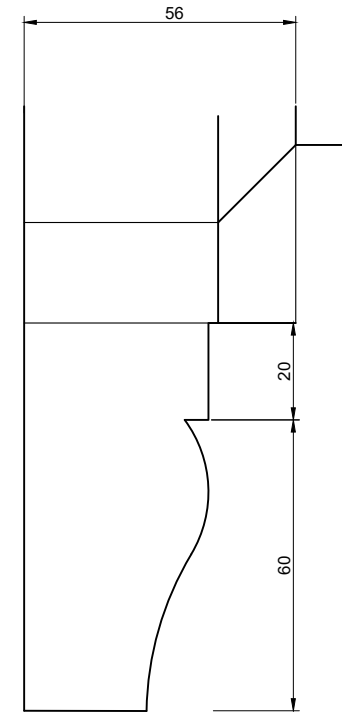
**GLASS**  
6.8mm LAM - 16mm AR - 4mm (Bomb Spec)

**TIMBER**  
Engineered Redwood (Red Grandis Cill)

**PAINT**  
Teknos - Colour TBC



-----  
Structural Opening



**HORN A**

**PROPOSED REAR ELEVATION**

W/00/01, W/01/03, W/02/03, W/02/04

Project:  
TORRINGTON SQ.

Drawn By:  
Axel

App By:  
SW

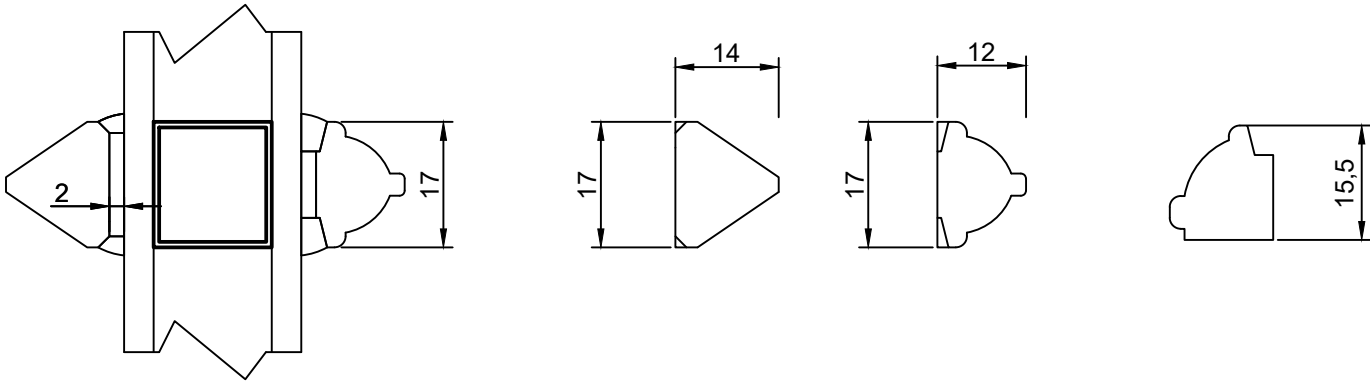
Dwg No:  
N/A

Rev No:  
N/A



**SASH WINDOWS**  
LONDON • EST. 2005

# GLAZING BARS & MOULDINGS



Notes:  
Bars and Mouldings

Project:  
NZWEB

Drawn By:  
Axel

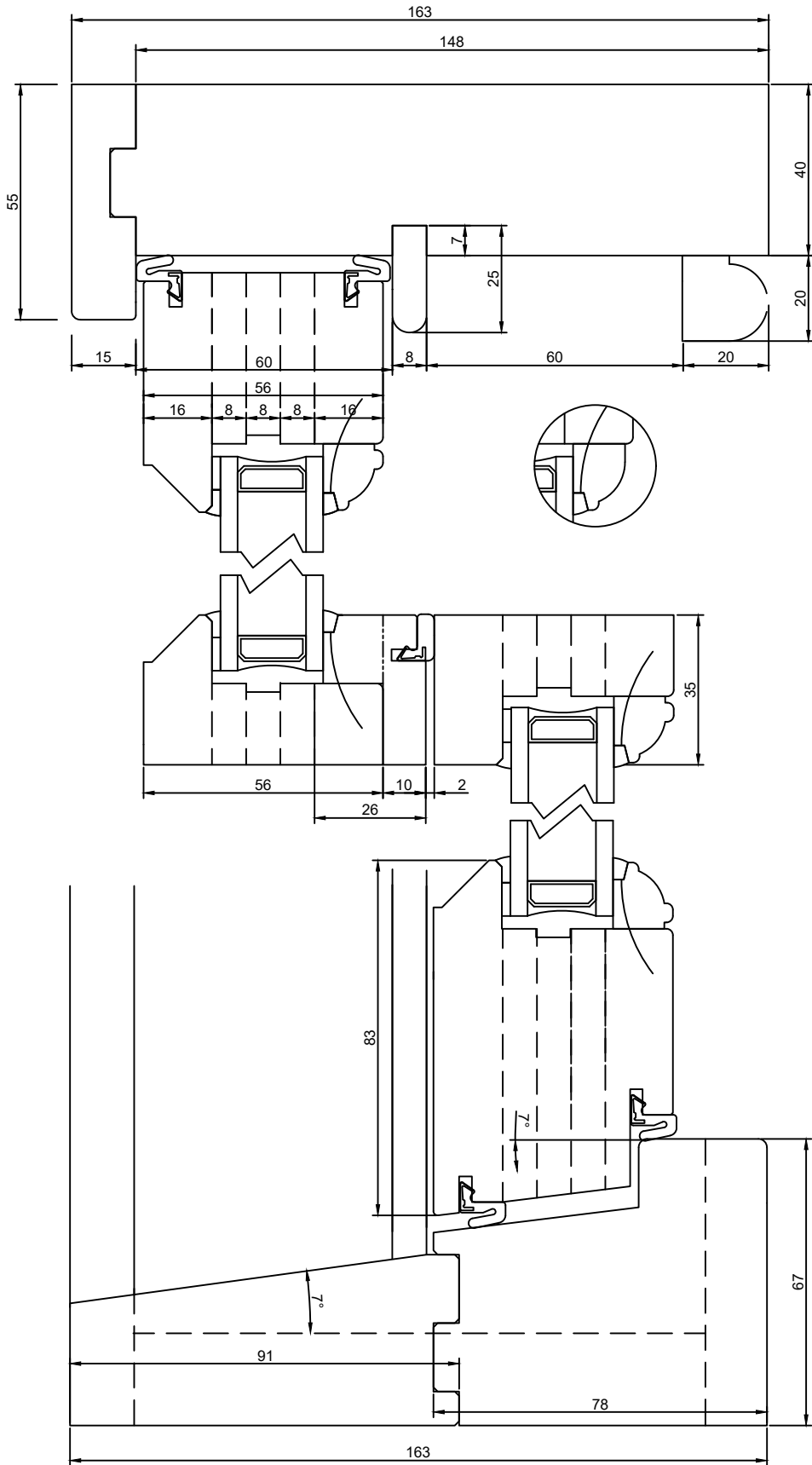
App By:  
SW

Dwg No:  
BM1

Rev No:  
N/A



**SASH WINDOWS**  
LONDON • EST. 2005



Notes:  
SB SASH 56

Project:  
SBS56

Drawn By:  
Axel

App By:  
SW

Viewed Outside

Dwg No:  
N/A

Rev No:  
N/A



**SASH WINDOWS**  
LONDON • EST. 2005