



Selectaglaze Ltd, Alban Park, Hatfield Road, St Albans AL4 0JJ
Phone 01727 837271 Fax 01727 844053

- [Selectaglaze »](#)
- [Benefits »](#)
- [Guidance »](#)
- [Products »](#)
- [Gallery](#)
- [Sectors »](#)
- [Heritage Buildings »](#)
- [Contact us »](#)
- [Quicklink »](#)

Series 20 Vertical sliding

Guidance

A slim sash system suited to the treatment of traditional double hung sash windows. When installing this unit a minimum gap between the windows of 75mm is recommended to facilitate cleaning.

Product Features

- Adjustable spiral spring balances fully support a sash weight up to 20Kg in all positions
- Slim unobtrusive sight lines
- Recessed finger lift allows contra-sliding and facilitates cleaning
- Integral finger pull to upper sash
- Design permits both sashes to be operated independently
- Twin brush seals ensure high sealing efficiency
- Concealed fixings provide clean appearance

Options

Glazing

- 4mm to 8mm

Frame

- Curved heads to a minimum radius of 450mm
- Trickle ventilator within extended timber sub frame.
- Colour matched mullion/transom section allows frames to be linked

Ironmongery

- Fitch catch lock (white or silver)
- Chubb 8K 100 lock (white)

Size guidelines

- (subject to glass thickness)
- Maximum sash size 1500mm x 1300mm (allows overall frame height of 3000mm)

<http://www.selectaglaze.co.uk/products/vertical-sliding/20.php>



Page 1 of 2



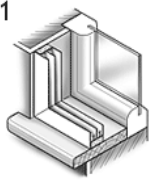
Selectaglaze Ltd, Alban Park, Hatfield Road, St Albans AL4 0JJ
Phone 01727 837271 Fax 01727 844053

- [Selectaglaze »](#)
- [Benefits »](#)
- [Guidance »](#)
- [Products »](#)
- [Gallery](#)
- [Sectors »](#)
- [Heritage Buildings »](#)
- [Contact us »](#)
- [Quicklink »](#)

Fixing details

Standard Square Reveal Fix

S1

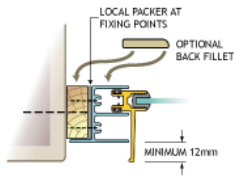


allows finished decoration

- 33mm x 15mm twice primed softwood ground bedded in acrylic mastic and fixed to structure
- Odd leg frame with applied mastic bead lips ground and is fixed to it
- Local concealed packers take up opening tolerance
- Optional caulking joint between frame and wall

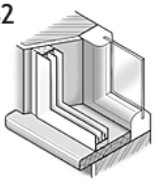
Guidance

- Set back minimum 12mm from wall face to avoid blowing plasterwork
- Any hinge fixings must penetrate into structure
- Enlarged timber grounds required when:
 - Dealing with very irregular openings
 - providing access for remote blind controls
- Optional back fillet available to conceal packing



Splayed Reveal Fix

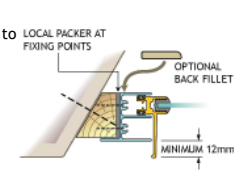
S2



- Shaped softwood ground is machined to match the splay
- Aluminium frame fixing continues as S1

Guidance

- When attaching to shutters ensure that these are securely fixed back and sealed beforehand
- Timber section can be sized to accommodate remote blind controls
- 12mm minimum setback as S1



Face fix

- Softwood frame with minimum 38mm x 32mm section bedded in acrylic mastic and fixed back to structure
- Optional ovolo moulding
- Aluminium frame fixing continues as S1

Guidance

- Suitable detail where:
 - no reveal exists
 - where clearance is needed for inward opening windows



Selectaglaze Ltd, Alban Park, Hatfield Road, St Albans AL4 0JJ
Phone 01727 837271 Fax 01727 844053

- [Selectaglaze »](#)
- [Benefits »](#)
- [Guidance »](#)
- [Products »](#)
- [Gallery](#)
- [Sectors »](#)
- [Heritage Buildings »](#)
- [Contact us »](#)
- [Quicklink »](#)

Series 20 Vertical Sliding Operation and Maintenance

Operation

The sashes can slide after releasing any locking catches and the spring balances will support the sash in any position. Avoid any fast movement or slamming action since this will adversely affect the spiral balances. It is recommended that both hands are used when operating the window to ensure even pressure on the balances.

Maintenance

Cleaning Access

The sashes are attached to the spiral spring balances and cannot be removed. They contraslide and the rear glass surface can be accessed from above and below. A long handled cleaner may be needed for tall sashes.

Cleaning

The cleaning cycle will be dictated by local conditions and should consist of washing down the glass and aluminium with a non alkaline detergent in warm water using a soft cloth. For more stubborn marks on the aluminium a soft brush or nylon pad should be used. Avoid abrasive cleaners, steel wool, strong acids or alkalis. After cleaning it is advisable to rinse the surfaces with clean water and then wipe dry. Chips or scratches in a paint finish can be touched in using a matching non cellulose paint and care must be taken not to get this into draught seals or moving parts. Repair of anodised finishes is not practical other than by touching in with a colour matched paint but the finished appearance is seldom complementary.

Balance Adjustment

The spring balances are factory adjusted but, with use, the tension can change allowing the sash to creep up (over tension) or drop (under tension). Adjustment is carried out using a tensioning tool (available from Selectaglaze). Raise the sash to its highest point and support with a suitable prop. Release the screw on the sash balance retainer and slide it back. Hook the tensioning tool on to the spring spiral and pull down so that the "butterfly" clears its locating slot in the balance foot. Turn the spiral clockwise to increase tension or anti-clockwise to decrease. It is likely that only half a turn will be necessary. The procedure is reversed to re-attach. The balance foot must be flush with the sash when reinstated to avoid any rubbing action on the frame. Check the operation of the sash and ensure that both supporting balances are adjusted to equal tension.

Balance Replacement

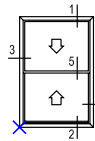
When a balance fails, the weight of the sash becomes unsupported. It should be lowered to the bottom of the frame and a warning sign attached. The window has to be fully removed to allow replacement and instructions are available from Selectaglaze. The work must be carried out by a competent person after completing a full risk assessment.

http://www.selectaglaze.co.uk/operation_maintenance/series-20-vertical-sliding.php

Page 1 of 2

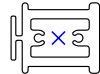
AutoCAD Library

Series 20 Block Drawings

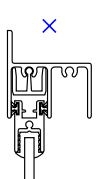


S-20_vscb
w:800 x h:1200

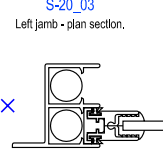
Coupling_Std
Standard coupling transom
Vertical section.



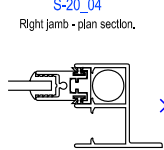
S-20_01
Head - vertical section.



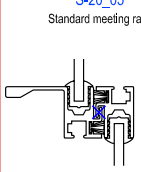
S-20_03
Left jamb - plan section.



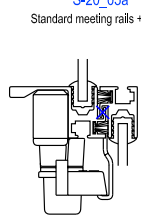
S-20_04
Right jamb - plan section.



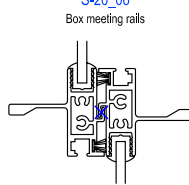
S-20_05
Standard meeting rails



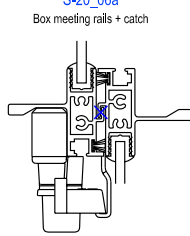
S-20_05a
Standard meeting rails + catch



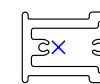
S-20_06
Box meeting rails



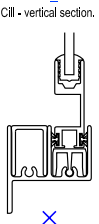
S-20_06a
Box meeting rails + catch



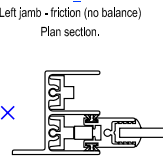
Coupling_Hd
Heavy duty coupling transom
Vertical section.



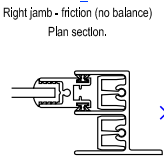
S-20_02
Cill - vertical section.



S-20_07
Left jamb - friction (no balance)
Plan section.



S-20_08
Right jamb - friction (no balance)
Plan section.



Batten_Std
Standard softwood ground.

