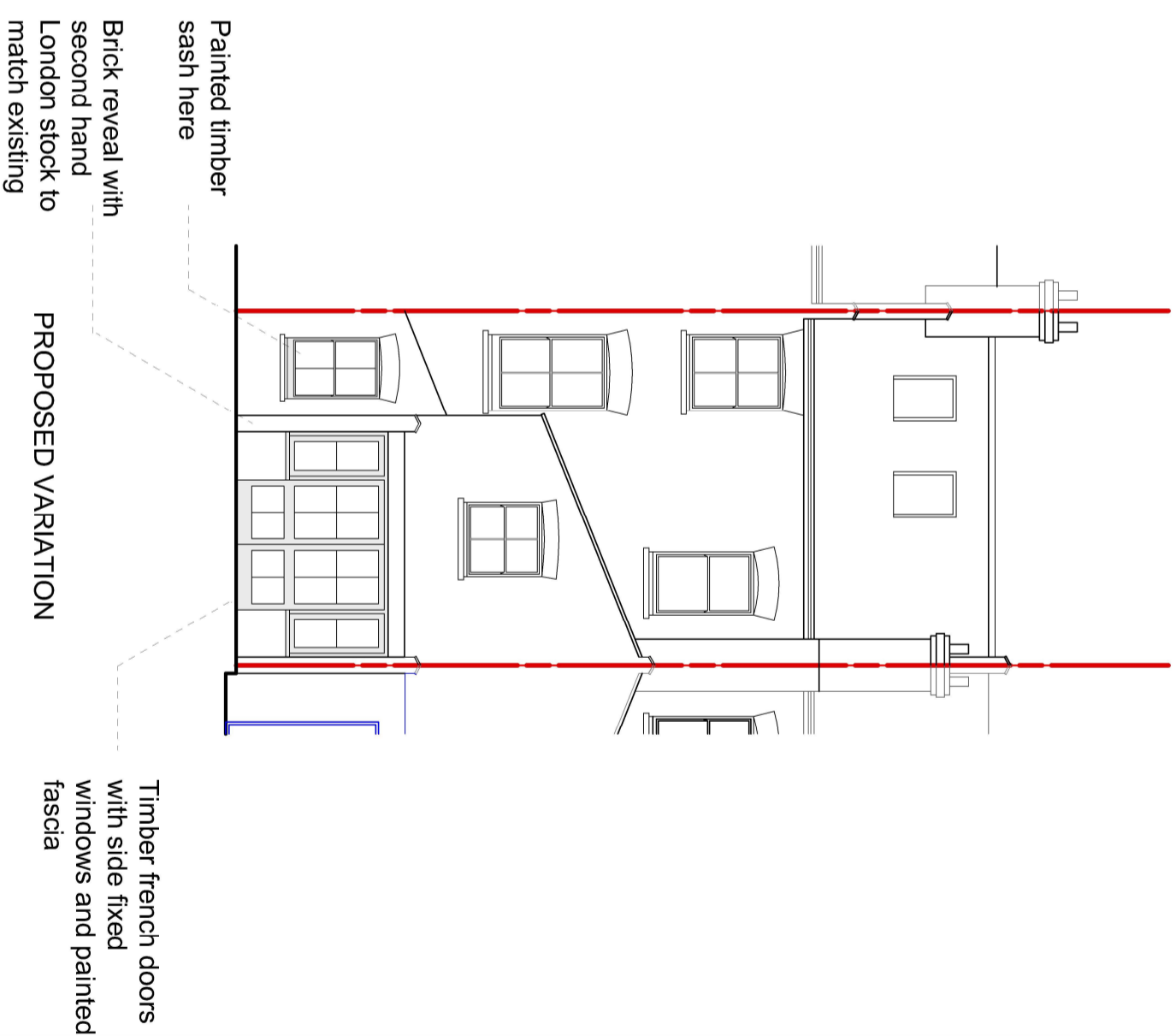
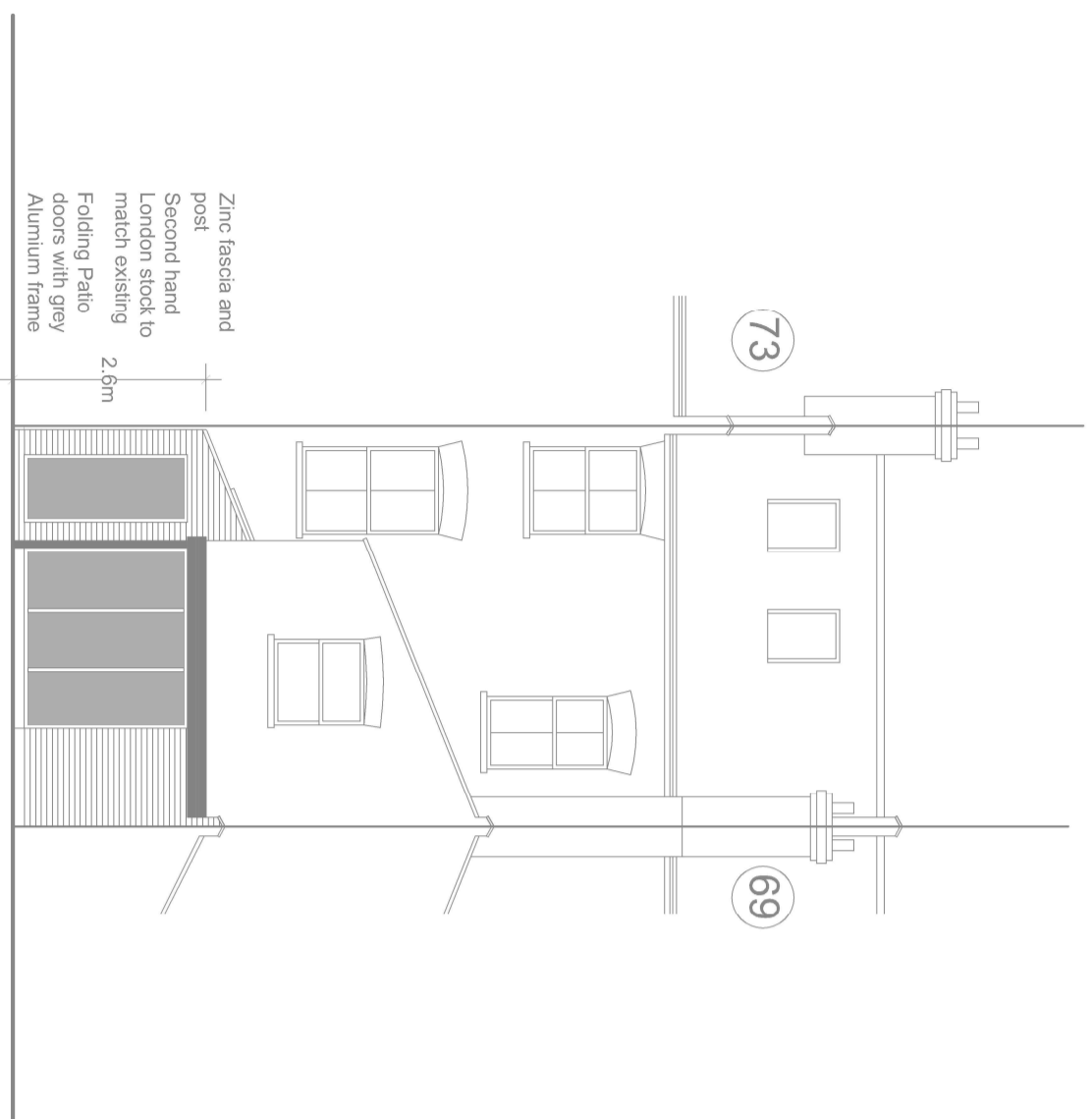


**General Notes**  
 All dimensions to be verified on site  
 To be read in conjunction with all relevant documents  
 In the event of discrepancy notify the Architect immediately  
 This document is copyright of Hugh Cullum Architects Ltd

**Issue Status**

SK	Information	F	Feasibility	D	Design
P	Permissions	S	Scheme	T	Tender
C	Construction	E	Existing Condition		

 **Site Boundary Line**



(B): Revised fixed window size (24.07.19/OA)

(A): Revised glazed panel and Sash size (17.07.19/OA)

( ): Issued for Planning (17.05.19/OA)

Revision: Information (date/drawn by)

**HUGH CULLUM** 71 Roderick Road  
 ARCHITECTS LTD  
 Bloomsbury Design  
 61b Judd Street  
 London WC1H 9QT  
 t 020 7383 7647  
 f 020 7387 7645  
 mail@hughcullum.com

Planning - Variation  
 Rear Elevation  
 1:100@A3 May 2019  
**RR071-P123(B)**

0m



5m

**PROPOSED VARIATION** \_Rear Elevation