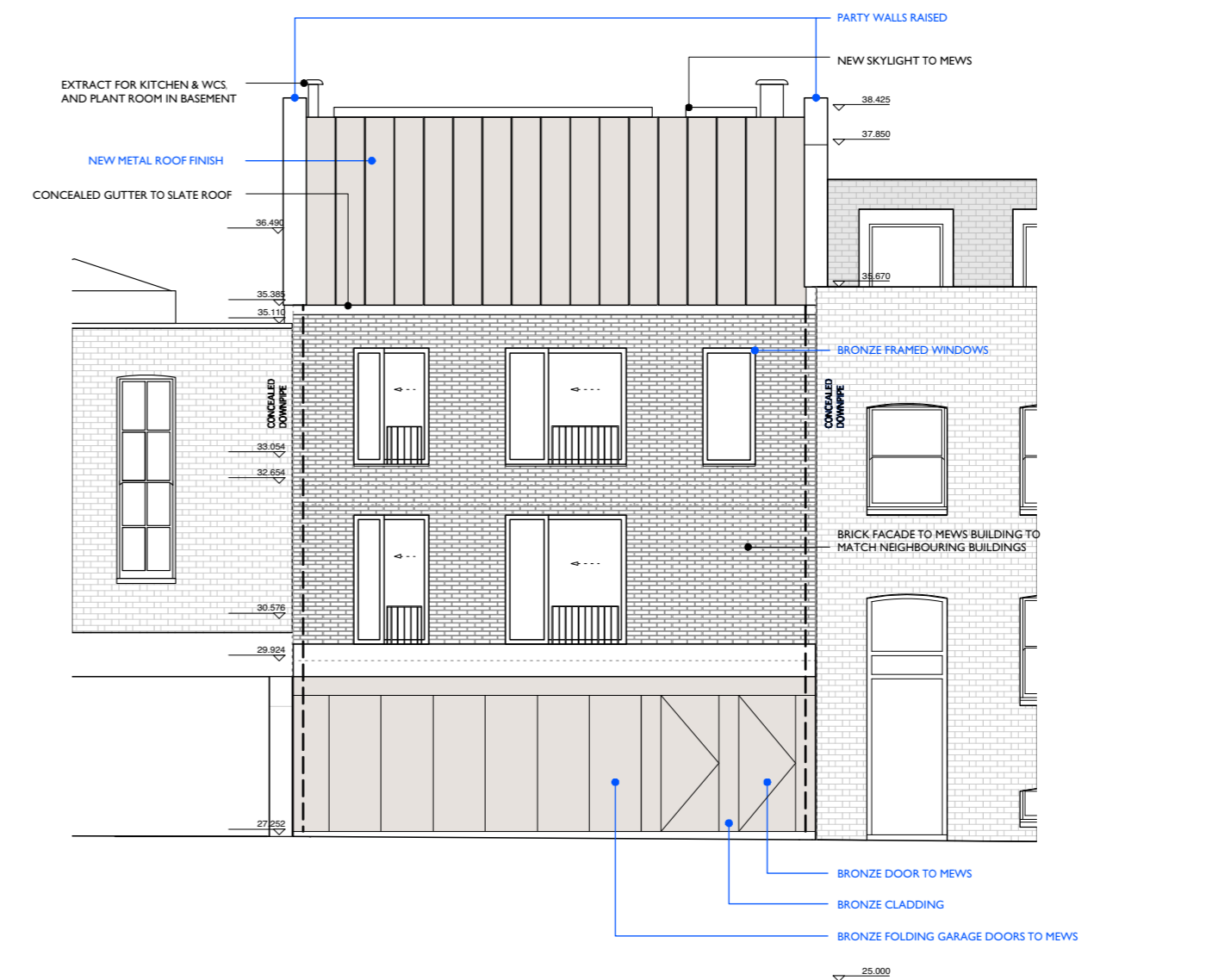


SECTION EE



MEWS LANE ELEVATION OF PROPOSED MEWS HOUSE



NOTES:  
Notes

REVISIONS:  
D

ALL REVISIONS ON LKB09\_201 MADE IN RESPONSE TO OFFICER'S COMMENTS DURING PRE-APPLICATION PROCESS OF 04.04.2019 - 12.07.2019

REVISION D 19.06.2019

GROUND FLOOR GARAGE DOOR, ENTRANCE DOOR AND REFUSE STORE DOOR SEPARATED BY PILASTERS AND ARTICULATED IN PLAN

MATERIAL OF GARAGE DOOR, ENTRANCE DOOR AND REFUSE STORE CHANGED TO METAL

GARAGE LINTEL RAISED TO MATCH NEIGHBOUR

CILLS CHANGED TO METAL PLATE

WINDOW CONFIGURATION CHANGED TO CREATE HIERARCHY OF SMALL-TO-LARGE WINDOWS FROM TOP TO BOTTOM

WINDOWS REDUCED IN SIZE

ROOFING MATERIAL CHANGED TO METAL

WINDOW FRAME MATERIAL CHANGED TO METAL

PARTY WALLS EXPRESSED

PROJECT:  
3 Fitzroy Square

DRAWING TITLE:  
MEWS HOUSE ELEVATION

STATUS:  
Section 73 Planning Application

NOTE:  
Do not scale from the drawing. Any discrepancies to be reported to the architect.  
All dimensions will be taken on site prior to ordering and construction.  
Copyright remains with the architect.  
This drawing is to be read in conjunction with the specification and all other relevant drawings.

JAMES GORST  
ARCHITECTS Ltd

35 Lamb's Conduit Street  
London  
WC1N 3NG  
t 020 7336 7140  
f 020 7336 7150  
e info@jamesgorstarchitects.com

DRAWING SCALE:	DRAWING NUMBER:	REVISION:
1:100@A2	LKB09_201D	D