

01/05/18

This drawing is the copyright and property of The Royal Bank of Scotland Group. It is to be used only for the purposes for which it is issued. It is not to be copied or published without written consent.

Do not scale from this drawing.



AS Built
General Arrangement

The Royal Bank of Scotland Group
Royal Bank Building 1, Wellington Place, Edinburgh EH1 1LL, UK

PROJECT: 350 EUSTON ROAD
EUSTON
LONDON

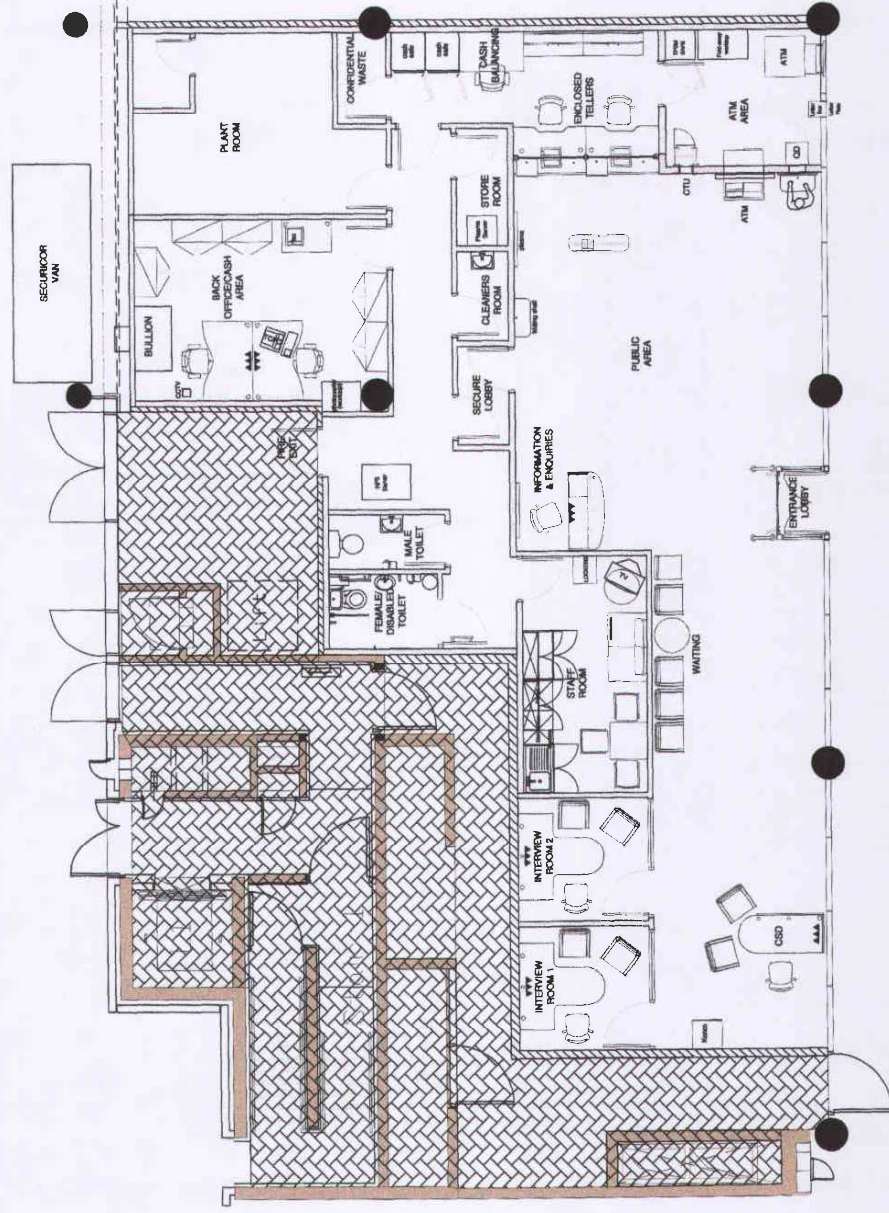
WORK: GROUND FLOOR
GENERAL ARRANGEMENT
AS BUILT

DATE	1:50 @ A1
DESIGNER	EH
CHECKED	LW
DATE	22-10-07
CONTRACTOR DRAWING NUMBER	

REV: 1
Rev: IMAC-TMP005-09-GA-RL-AR001

Key: Wall Types

	New Metal Stud Partition
	New C2 Faced Stud Partition
	New A42 Bonded Stud Partition
	New Blockwork



LEGEND

Wall Construction:

- New Metal Stud Partition
- New C2 Faced Stud Partition
- New A42 Bonded Stud Partition
- New Blockwork

Existing Walls:

- Existing Walls

FLOOR FINISHES:

- Tonnex vinyl flooring
- Barite flooring
- Sheet vinyl safety flooring

MISCELLANEOUS:

- NO WORKS ANTICIPATED