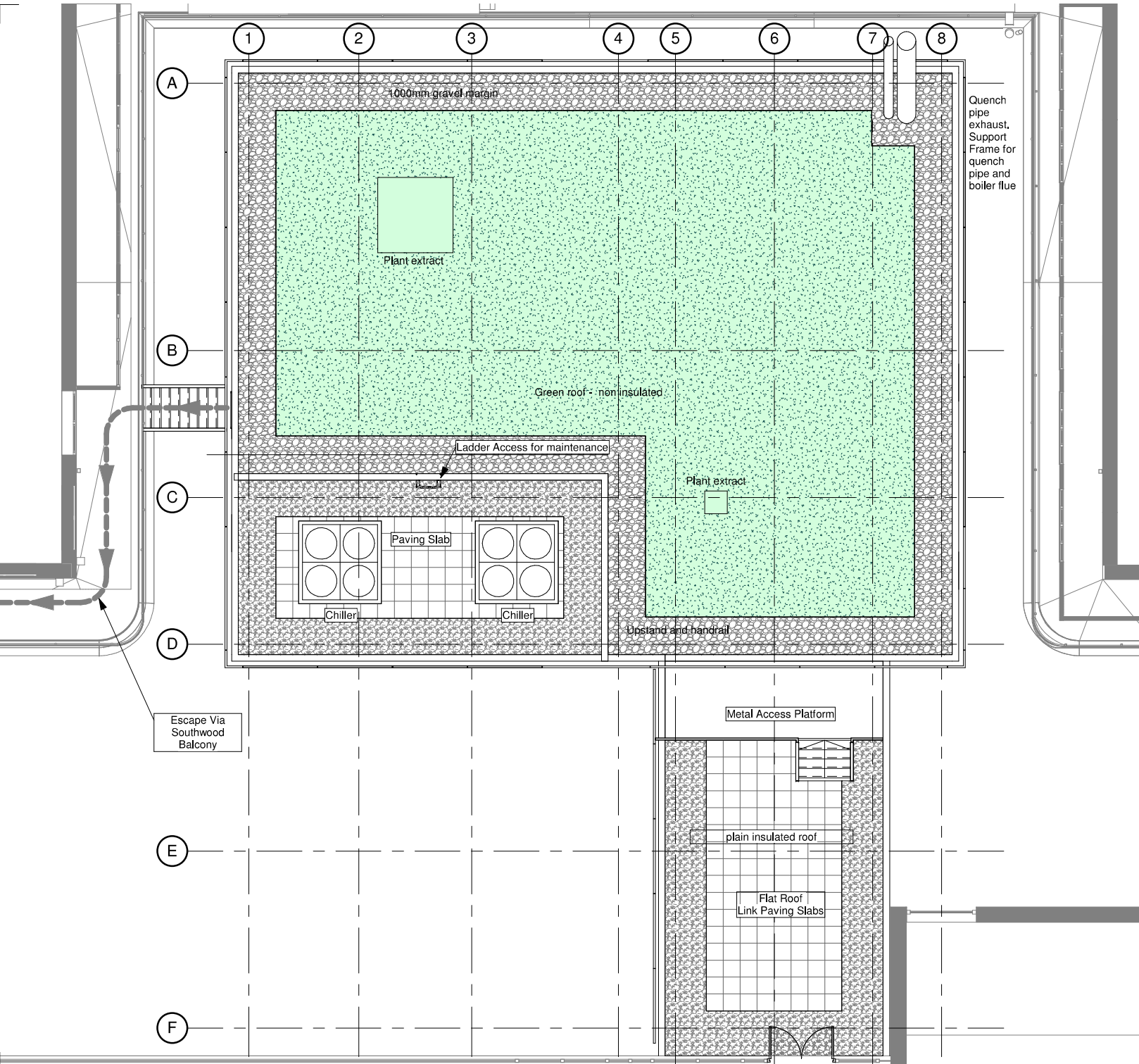


THIS DRAWING IS PROTECTED BY COPYRIGHT - FIGURED DIMENSIONS ONLY TO BE TAKEN FROM THIS DRAWING. DIMENSIONS TO BE CHECKED ON SITE AND ANY DISCREPANCIES REPORTED TO THE ARCHITECT IMMEDIATELY.

PURPOSE OF ISSUE - A = FOR COMMENT/CO-ORDINATION B = FOR INFORMATION C = FOR APPROVAL D = FOR TENDER E = FOR CONSTRUCTION F = FINAL DESIGN DRAWING

Rev	Rev Date	Revision Description	Drawn/Checked	Purpose of Issue
A	07/10/2016	Issued For Approval	VS/MH	C
B	16/01/2017	Issued For Approval	VS/MH	C
C	28/02/2017	Updated roof to RSP comments	VS/MH	B
D	22/03/2017	General Update	VS/MH	C
E	31/03/2017	General Update	VS/MH	C
F	06/04/2017	Colour Added	VS/MH	A
G	11/04/2017	General Issue	VS/MH	A
H	13/04/2017	General Update	VS/MH	A
J	28/04/2017	Pricing Issue	VS/MH	P
K	12/05/2017	For Planning	VS/MH	C
L	25/05/2017	For Planning	VS/MH	P



FOR APPROVAL

0 1 2 3 4 5metres
For 1:100 scale

Proposed Level 05 (Third Floor) Roof Plan	16021	(01)005	L
	JOB NUMBER	DRAWING NUMBER	REV.
Great Ormond Street Hospital for Children - NHS Foundation Trust	22/09/2016	1 : 100	
	DATE	SCALE @ A3	

Ansell & Bailey LLP Chartered Architects, 24-32 Stephenson Way, London, NW1 2HD, 020 73870141, architects@ansellandbailey.com