



KEY

1. Original brick facade.
2. Existing stone frieze to be retained in Graphite Black Matt (RAL 9011).
3. Existing stone plinth to be retained in Graphite Black Matt (RAL 9011).
4. Existing projecting metal framed signs, internally illuminated (only letters illuminated) above the main entrance doors retained.
5. Proposed Heritage style single swing double glazed door with matching fanlight above. Ref: Janisol / W50 steel door finished in Graphite Matt Black (RAL 9011) with 10% sheen to match adjacent Warehouse entrance doors.

BELGO RESTAURANT
Fire exit
(No Change)

44 EARLHAM STREET
Studio B1 Office
(No Change)

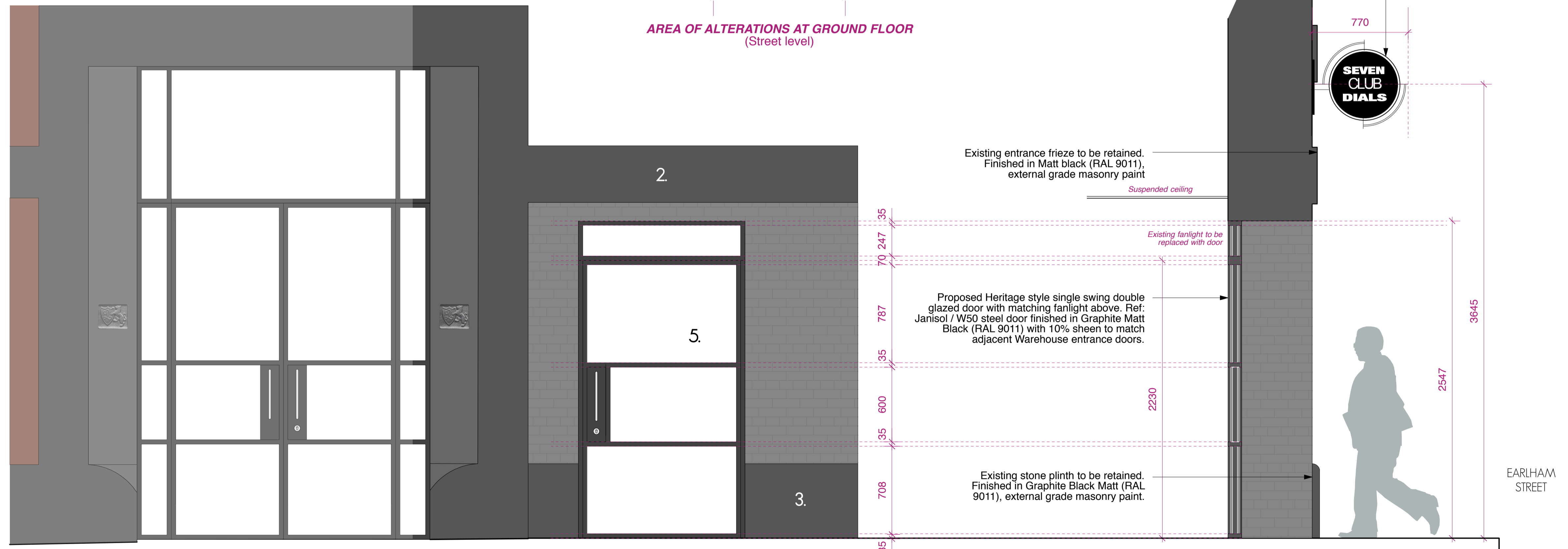
42 EARLHAM STREET
Warehouse B1 Office
(No Change)

SEVEN DIALS CLUB
Entrance

EARLHAM STREET ENTRANCE ELEVATION
(Scale 1:50)

AREA OF ALTERATIONS AT GROUND FLOOR
(Street level)

Existing metal framed, projecting internally illuminated sign. Frame finish: Powder coated in graphite black RAL 9011.



PROPOSED DOOR SPECIFICATION

Proposed Heritage style steel frame single swing door with fanlight and double glazed panes to existing opening of main entrance to the Seven Dials Club. Ref: Janisol / W50 thermally broken steel door finished in Graphite Matt Black (RAL 9011) with 10% sheen to match all existing door and window frames.

Hardware:

Automatic door gearing from Dorma for single swing inward opening door, 2 x deadlocks and euro profile cylinders to match existing, 1 x pair of standard door push pad openers, double ramped threshold for accessibility with single swing door automation package.

Automated door to be linked to building management access control and entry system in accordance with M&E Engineer's specification.

ENTRANCE DOOR ELEVATION DETAIL
(Scale 1:20)

ENTRANCE DOOR SECTION DETAIL
(Scale 1:20)

PROPOSED EARLHAM STREET ENTRANCE FACADE ALTERATIONS



PLANNING

B	30.05.19	Revised door specification
A	28.02.18	Notes omitted
rev.	date	notes

This drawing is the copyright of gpad london ltd. Not to be reproduced, related or disclosed to any unauthorised person, either wholly or in part without written permission. Do not scale off this drawing. All indicated dimensions to be checked and verified on site by the contractor before commencement of any fabrication drawings or work whatsoever on site. Report any discrepancies to the Architect immediately. Drawings to be read in conjunction with relevant drawings and specification.

PROJECT	SEVEN DIALS WAREHOUSE LONDON WC2		
CLIENT	CBRE c/o ASSET SERVICES UK		
SCALE	1:50 & 1:20 @ A1	DATE	JAN 19
CHKD.	DWG NO.	DWG BY	SF
	624-PL-10		
		REV.	B

DRAWING TITLE	PROPOSED EARLHAM STREET ENTRANCE FACADE ALTERATIONS		
T: 020 7549 2133	E: info@gpadlondonltd.com		2nd Floor
W: www.gpadlondonltd.com			130 Old Street London EC1V 9BD