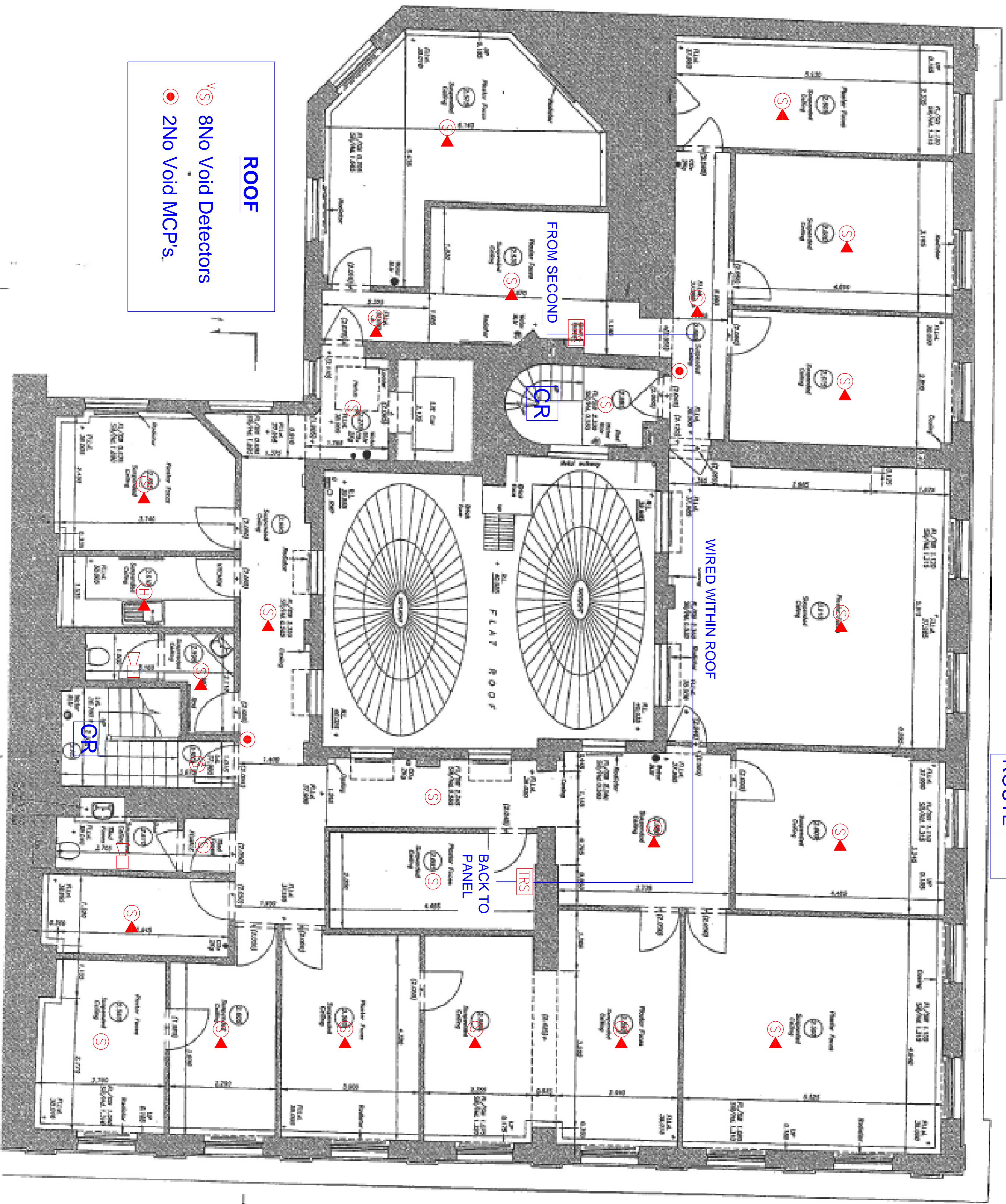


CR = CABLE  
ROUTE



**ROOF**  
8 No Void Detectors  
2 No Void MCP's

- LEGEND:**
- Ⓢ SMOKE DETECTOR
  - Ⓜ H HEAT DETECTOR
  - Ⓥ V SMOKE DETECTOR IN CEILING VOID
  - ▲ BASE MOUNTED SOUNDER
  - ⚡ BASE MOUNTED SOUNDER CW BEACON
  - 📞 WALL MOUNTED FIRE ALARM SOUNDER
  - Ⓜ MANUAL CALL POINT
  - Ⓜ TRS TRANSPONDER UNIT
  - Ⓜ FAP FIRE ALARM PANEL

**NOTE**  
ALL DEVICES ON THIS PROJECT  
ARE WIRELESS

|   |                      |   |  |
|---|----------------------|---|--|
|    |                      |  |  |
| <p>3a Heddens Way<br/>Glebe Farm Industrial Estate<br/>Widley, Essex<br/>S107 7NS<br/>Tel: 01788 542220<br/>Fax: 01788 541087<br/>Email: sales@leader-systems.co.uk</p> |                      | <p>Project<br/>17 Bloomsbury Square<br/>London</p>                                  |  |
| <p>Drawing Title<br/>Third Floor<br/>Fire Alarm Layout</p>  |                      |   |  |
| Designed  | Scale                | Date  |  |
| LS/LLP  | NTS @ A1             | 16.07.2019  |  |
| Drawn   | Drawing Created From |   |  |
| PB  |                      |   |  |
| Checked   | Drawing No           |   |  |
| PL  | LF-SW2279-8-FA-05    |   |  |