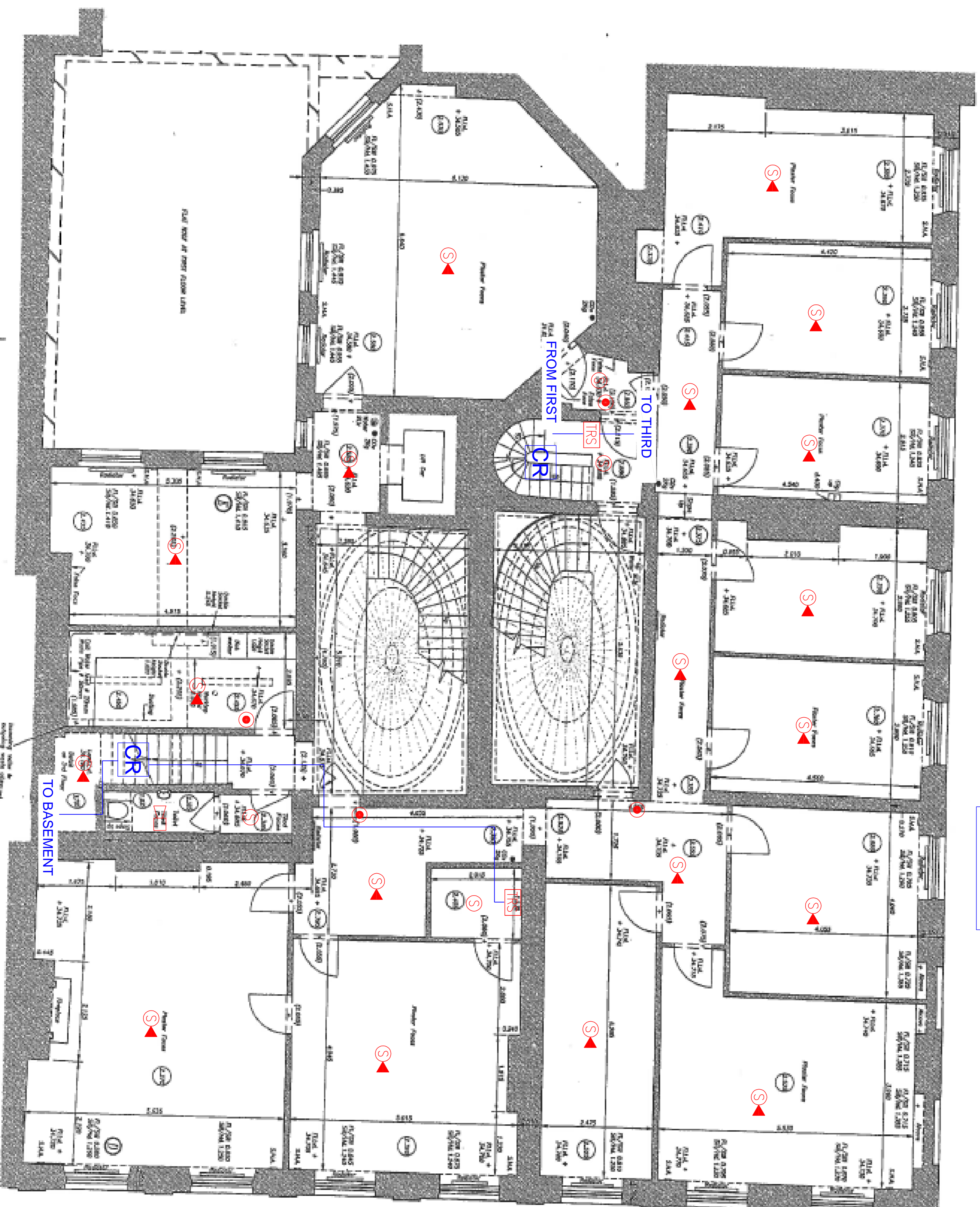


RUSSELL STREET

CR = CABLE
ROUTE



LEGEND:

- Ⓢ SMOKE DETECTOR
- Ⓜ H HEAT DETECTOR
- Ⓥ S SMOKE DETECTOR IN CEILING VOID
- ▲ BASE MOUNTED SOUNDER
- ⚡ BASE MOUNTED SOUNDER CW BEACON
- ◻ WALL MOUNTED FIRE ALARM SOUNDER
- MANUAL CALL POINT
- TRS TRANSPONDER UNIT
- FAP FIRE ALARM PANEL

NOTE

ALL DEVICES ON THIS PROJECT ARE WIRELESS

  			
<p>3A Hedders Way Great Farm Industrial Estate Widford Warwickshire CV21 1ST Tel: 01788 542220 Fax: 01788 541087 Email: sales@leader-systems.co.uk</p>			
<p>Project 17 Bloomsbury Square London</p>			
<p>Drawing Title Second Floor Fire Alarm Layout</p>			
Designed	Scale	Date	
LS/LLP	NTS @ A1	16.07.2019	
Drawn	Drawing Created From		
PB	/		
Checked	Drawing No		
PL	LF-SW2279-8-FA-04		