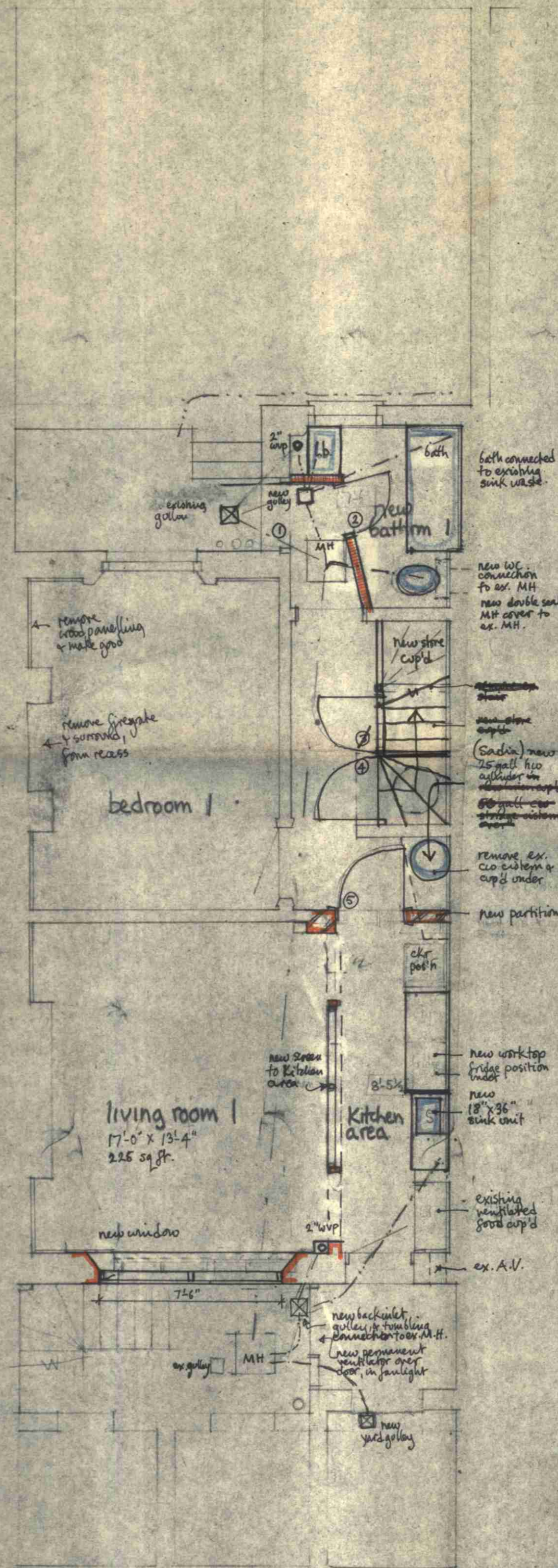
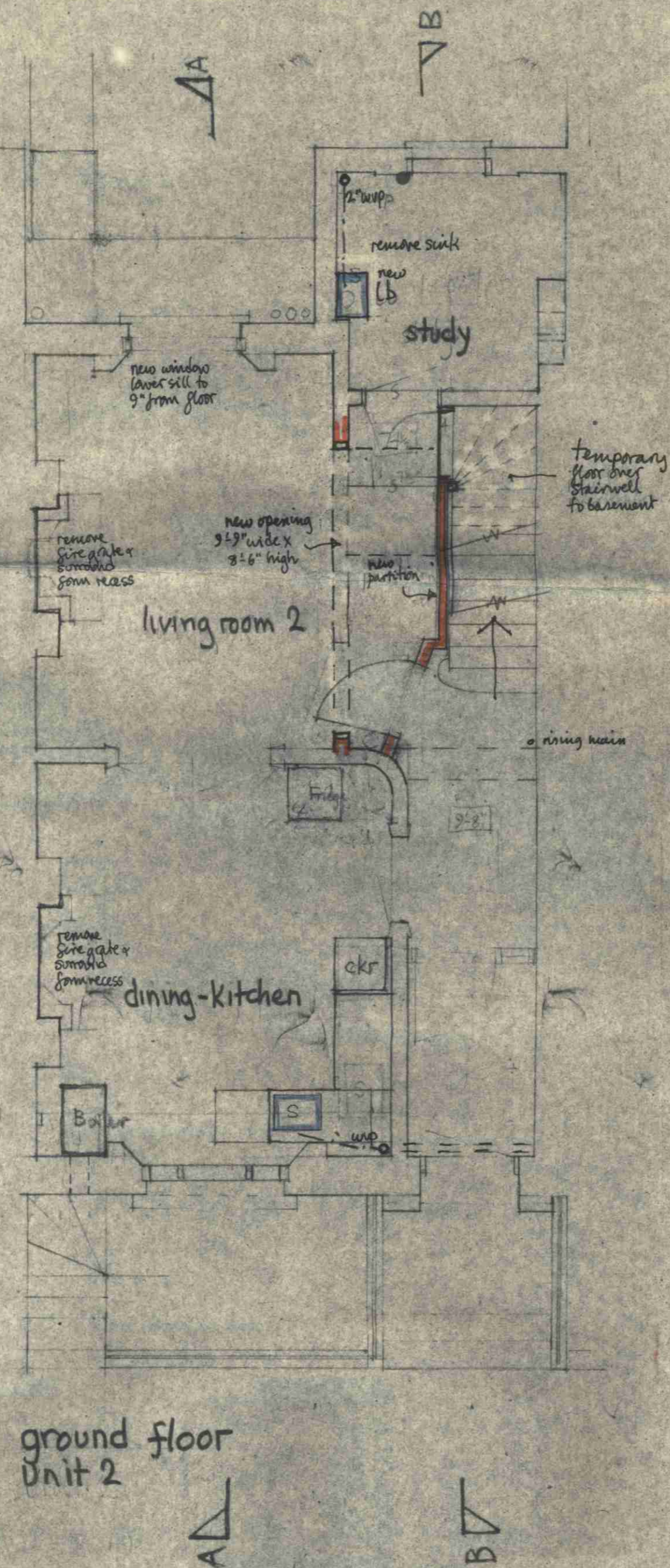


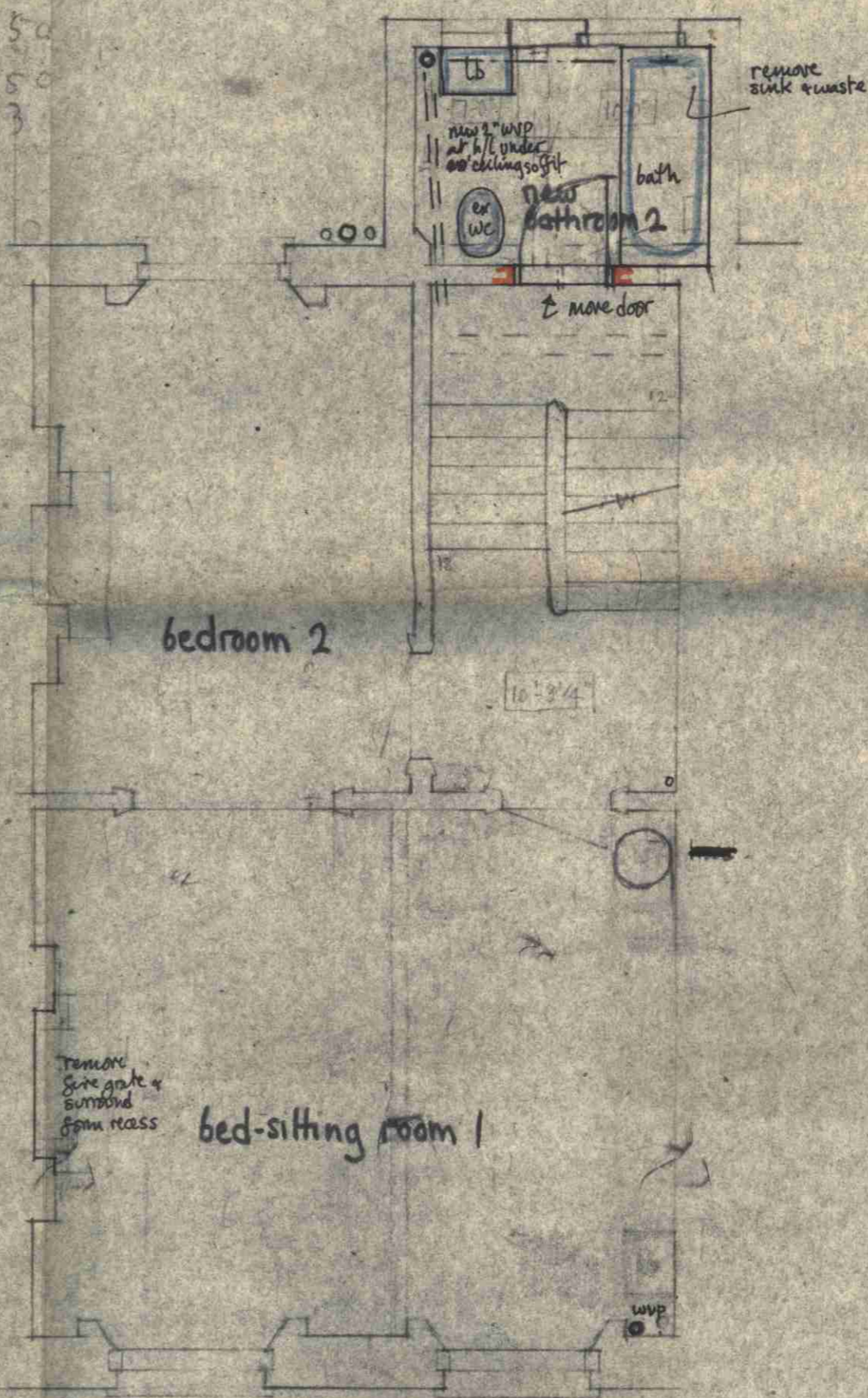
basement  
unit 1  
(specification 1)



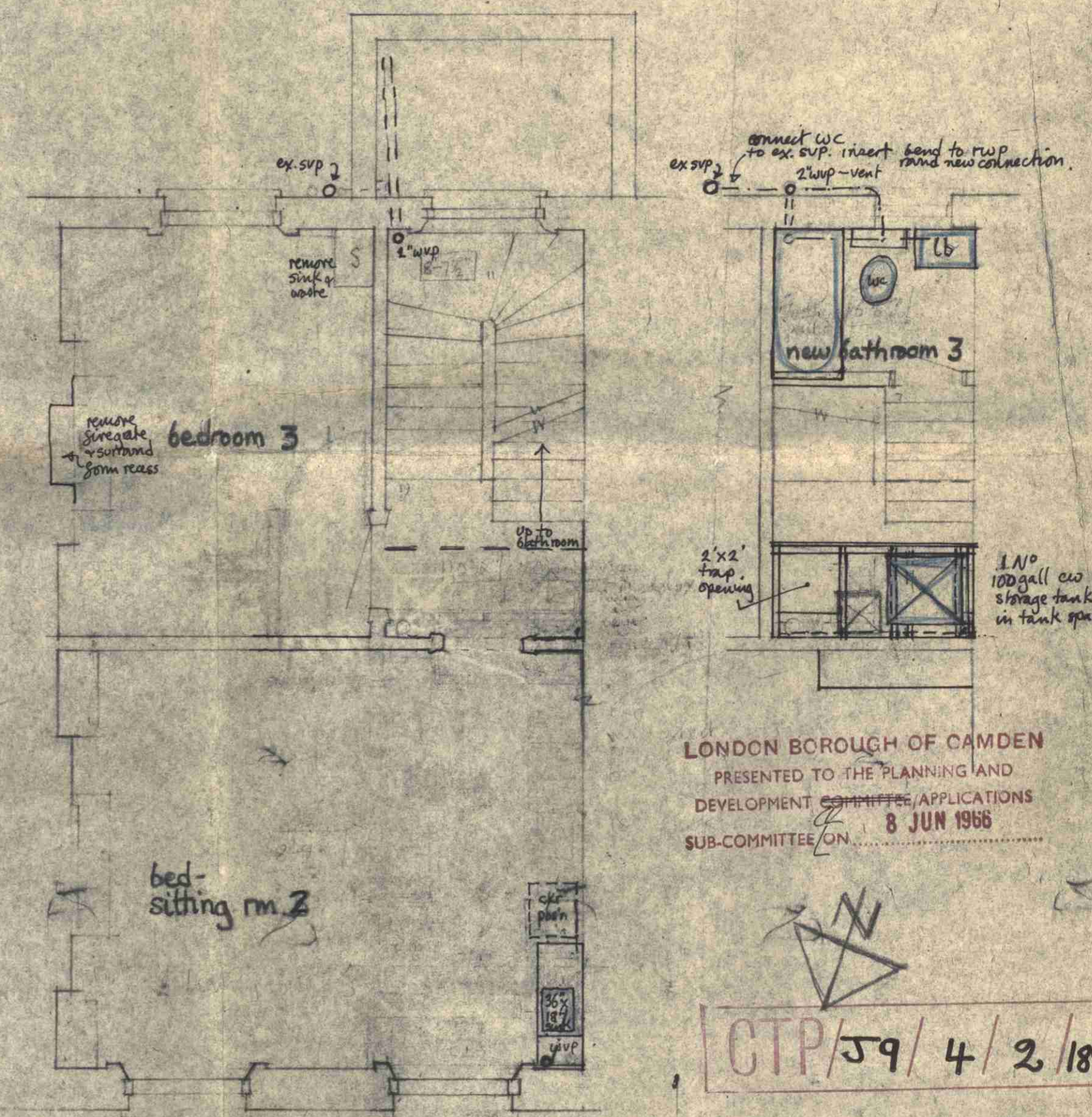
ground floor  
unit 2



first floor  
unit 2



second floor  
unit 2



LONDON BOROUGH OF CAMDEN  
PRESENTED TO THE PLANNING AND  
DEVELOPMENT COMMITTEE APPLICATIONS  
SUB-COMMITTEE ON 8 JUN 1966



CTP/59/4/2/1899

Floor Plans Scale 1/4" to 1'-0"  
Oct 1965  
rev. Jan 1966

3 Rothwell St  
Primrose Hill  
London NW1  
Proposed Conversion to form  
2 dwelling units  
S. Morland ARIBA AA Dip.  
2 Oppidans Rd  
London NW3