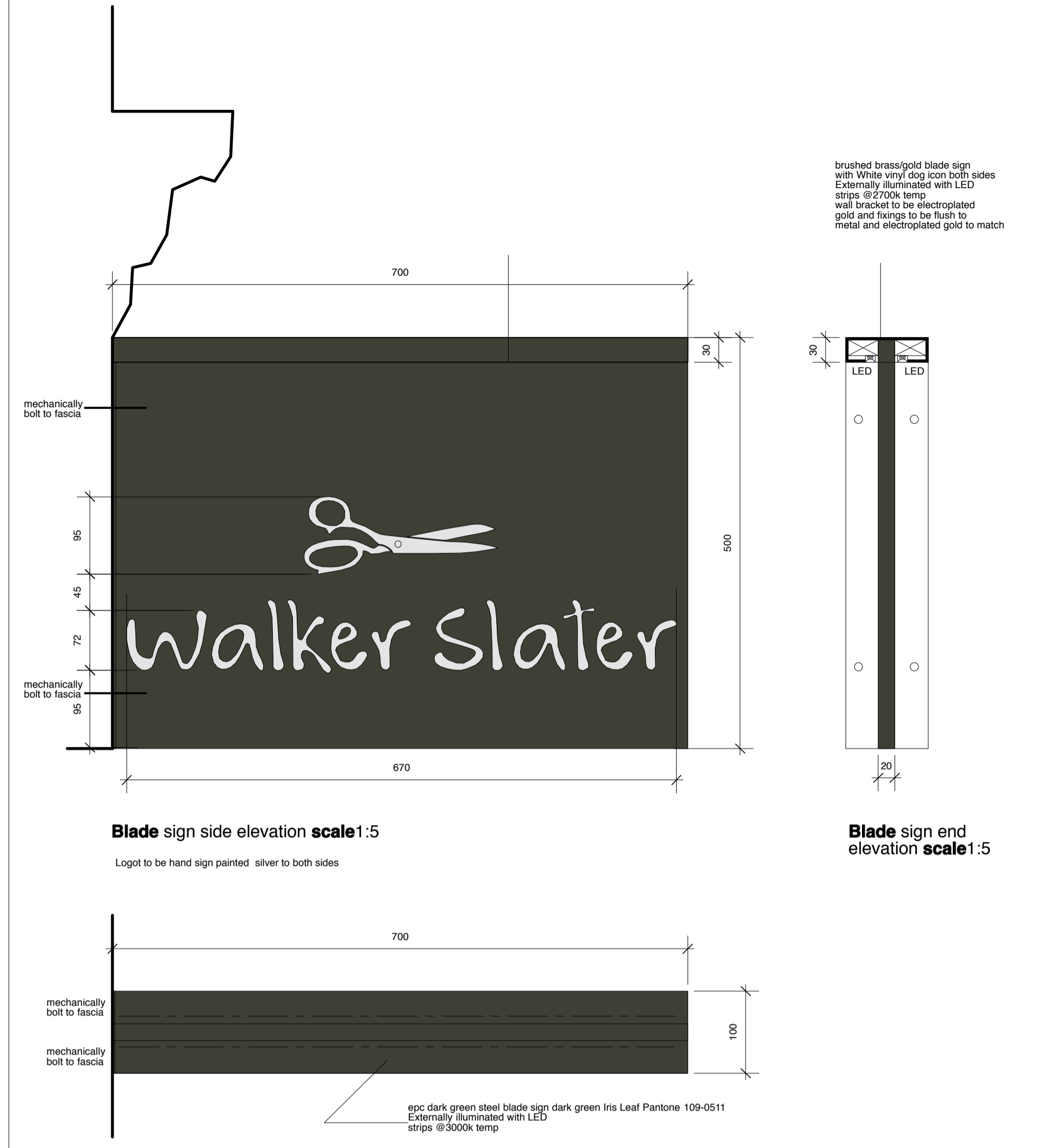


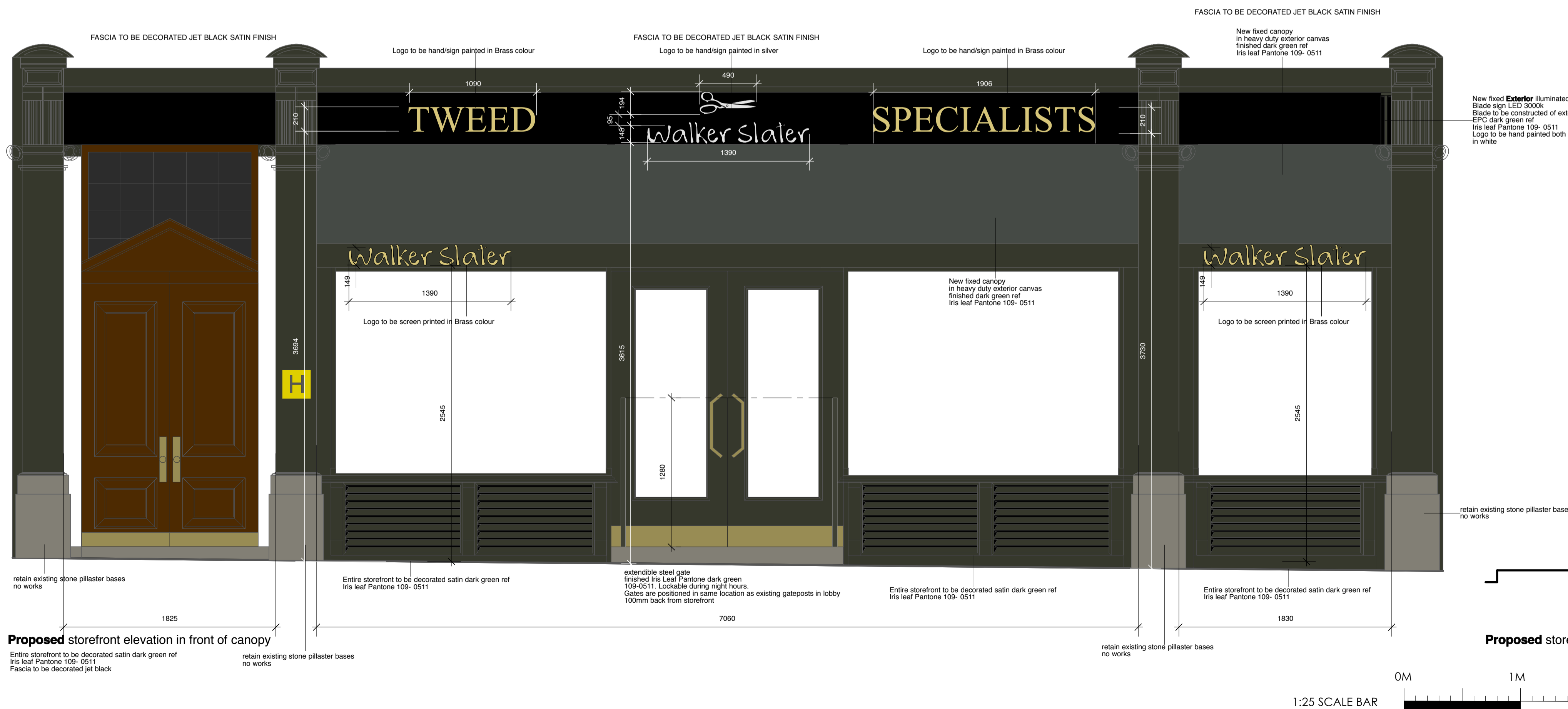


**Proposed storefront elevation behind canopy**  
 Entire storefront to be decorated satin dark green ref Iris leaf Pantone 109- 0511



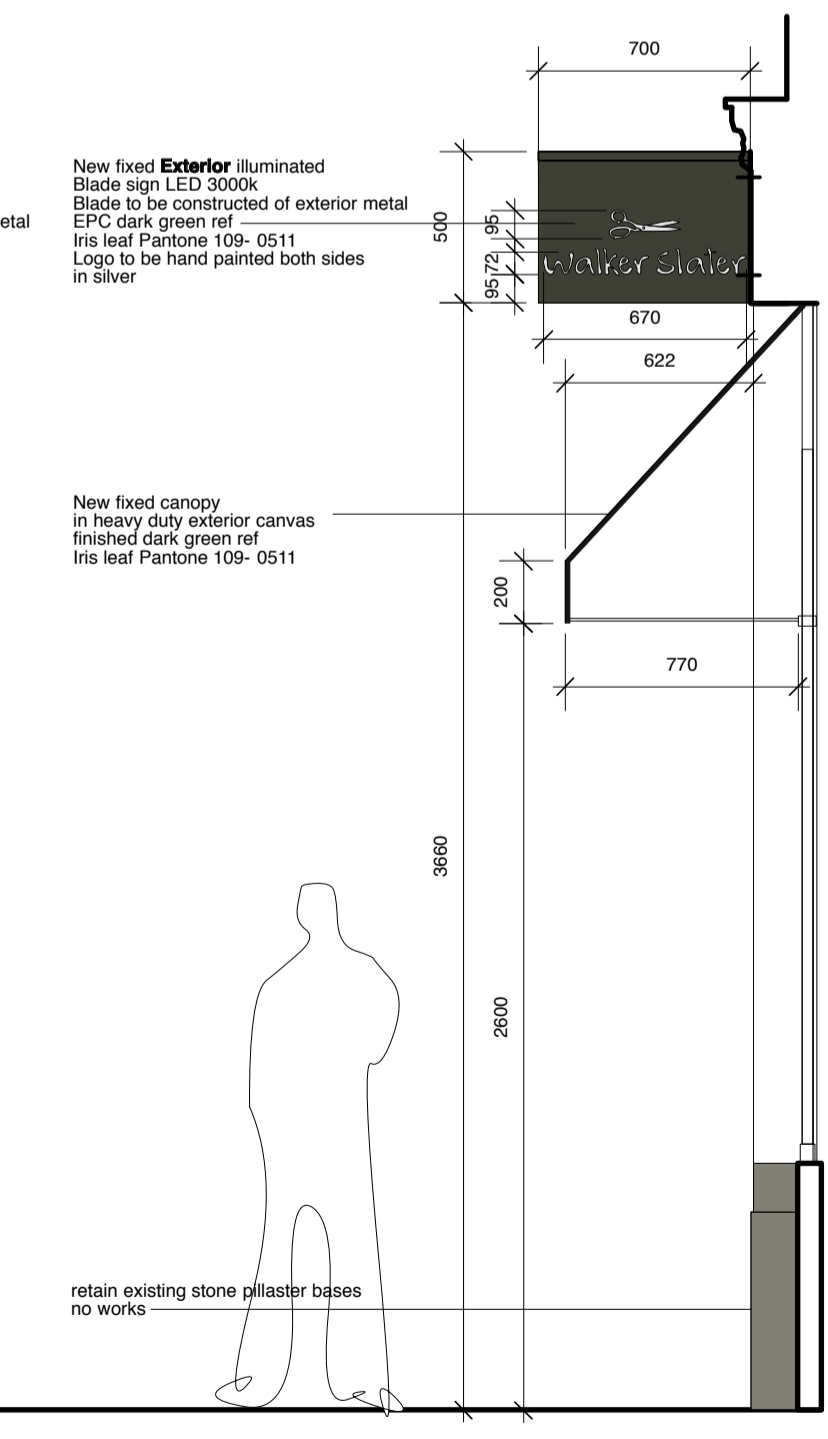
**Blade sign side elevation scale 1:5**

**Blade sign end elevation scale 1:5**



**Proposed storefront elevation in front of canopy**  
 Entire storefront to be decorated satin dark green ref Iris leaf Pantone 109- 0511  
 Fascia to be decorated jet black

**Proposed storefront section**



Revision notes	rev	date

**raylian.**  
 architecture . design . build

T+44(0) 208 747 1606 M+44 (0) 7973 640890 E www.raylian.co.uk

**Client**  
 Walker Slater

**Project**  
 19 Great Queen Street  
 London  
 WC2B 5BF

Description		
Proposed storefront elevations and sections		
Drawing number	Revision	
235.0 05		
Date	Scale @ A1	Design by
15/07/19	1:25/1:5	Nick Short

Registered Office: 20-22 Wenlock Road, London N1 7GU  
 All dimensions to be checked on site drawing must not be scaled. Take figured dimensions. This drawing is the property of Raylian International Limited and not be copied, used, reproduced or disclosed without written consent.