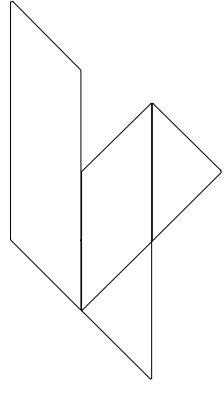
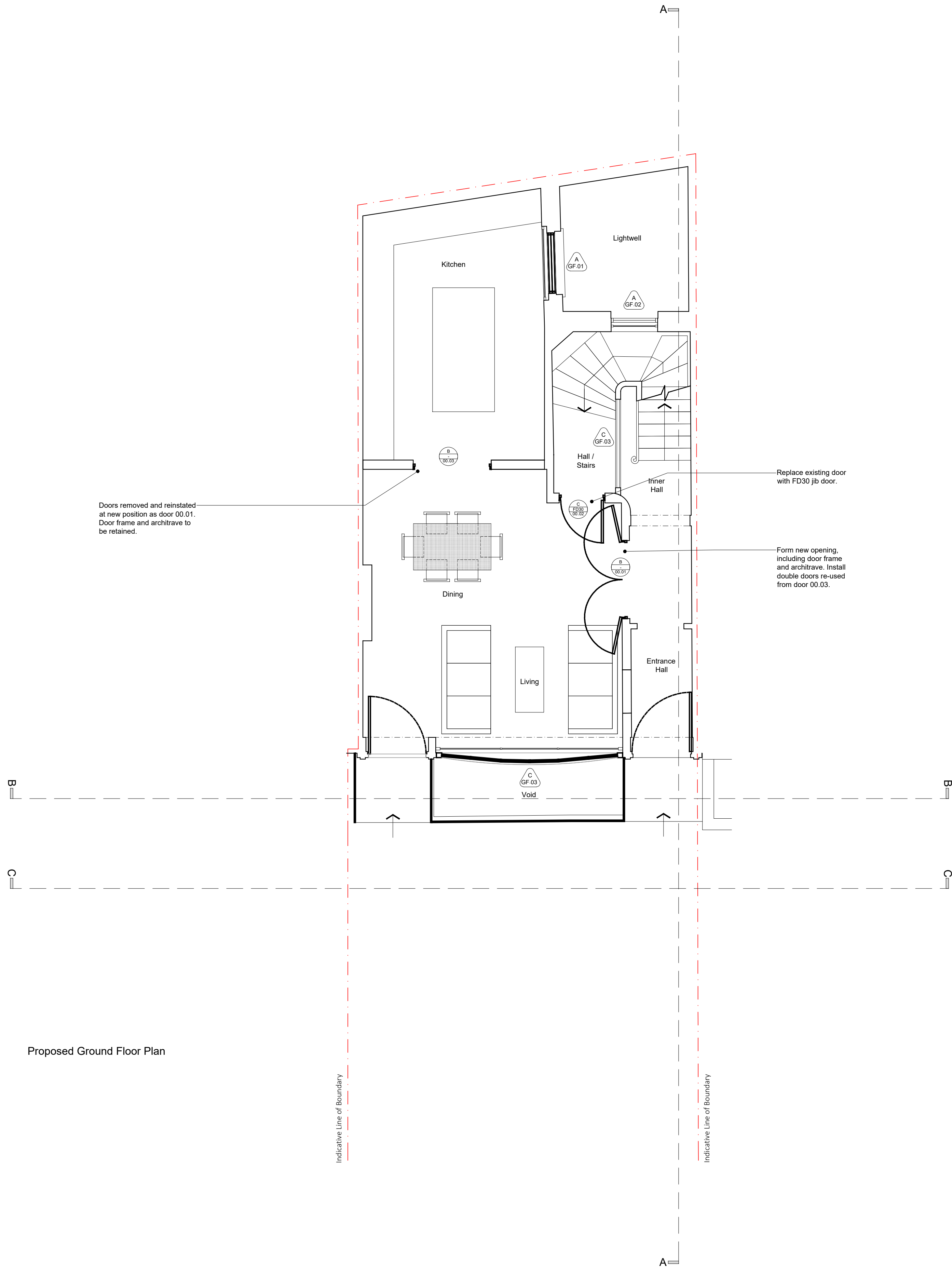
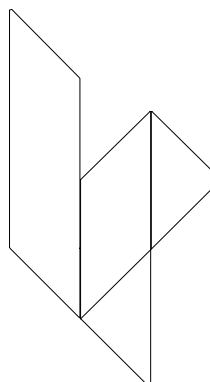


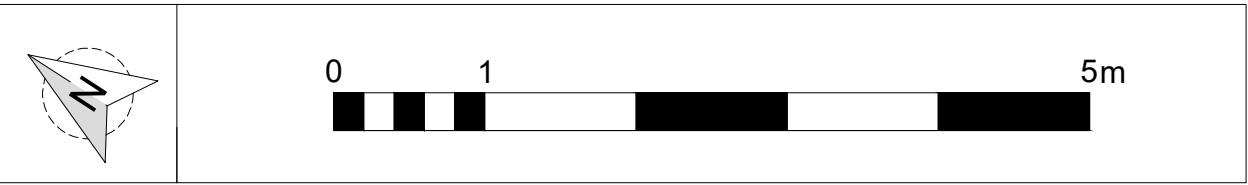
rev.	date	description		revised by	audited by
stage PLANNING	drawing title PROPOSED Lower Ground Floor Plan				
 <p>LIPTON PLANT ARCHITECTS</p>		CONTRACTORS ARE NOT TO SCALE DIMENSIONS FROM THIS DRAWING <div> Seatem House 39 Moreland St London EC1V 8BB client West Hill Projects Ltd </div> <div> T +44 (0)20 7288 1333 F +44 (0)20 7288 0333 E mail@lparchitects.co.uk W www.lparchitects.co.uk </div> <div> project 16 Cleveland Street London W1T 4HX </div>			
THIS DRAWING IS COPYRIGHT					
scale 1:50 @A1 1:100 @A3	date issued 2019.07.12	drawn by HJ	audited by KK	drawing no 548. (1). 1.001	revision A



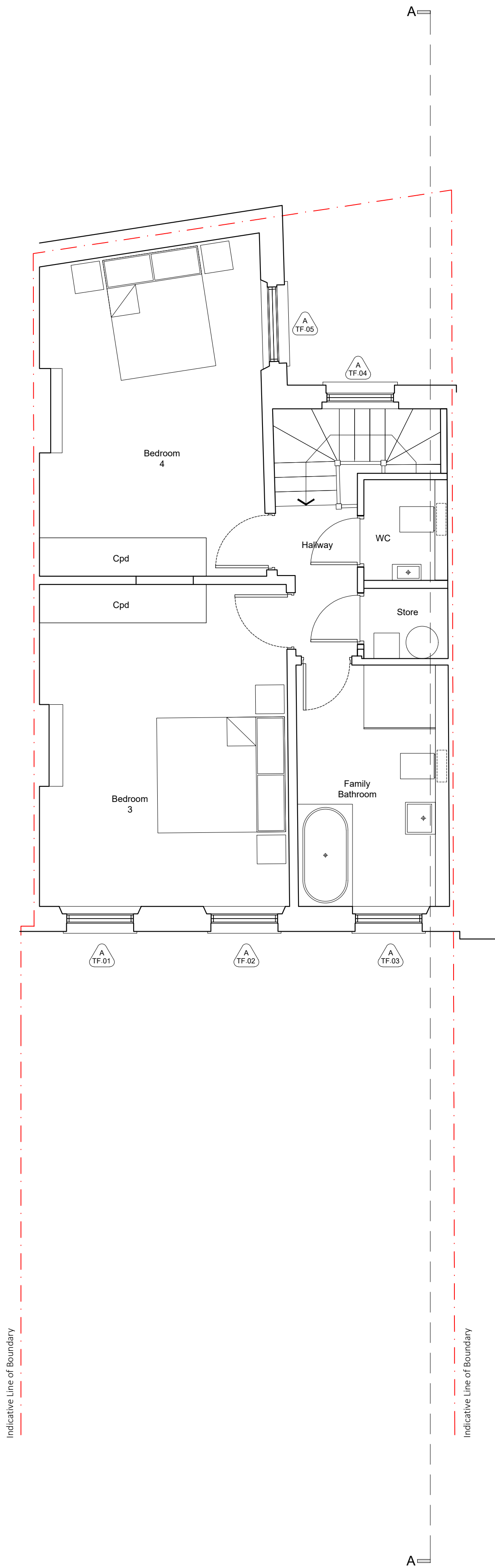
A	2019.07.19	For planning	CC	HJ	
	2019.07.12	For planning	CC	HJ	
rev.	date	description		revised by	audited by
stage PLANNING		drawing title PROPOSED Ground Floor Plan			
		CONTRACTORS ARE NOT TO SCALE DIMENSIONS FROM THIS DRAWING			
		Seatem House 39 Moreland St London EC1V 8BB			
		client West Hill Projects Ltd		project 16 Cleveland Street London W1T 4HX	
		T +44 (0)20 7288 1333 F +44 (0)20 7288 0333 E mail@lparchitects.co.uk W www.lparchitects.co.uk			
THIS DRAWING IS COPYRIGHT					
scale 1:50 @A1 1:100 @A3	date issued 2019.06.25	drawn by HJ	audited by KK	drawing no 548.(1).1.002	revision B

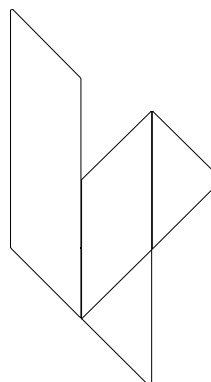






Proposed Third Floor Plan



2019.07.19		For planning		CC	HJ
rev.	date	description		revised by	audited by
stage PLANNING		drawing title PROPOSED Third Floor Plan			
		CONTRACTORS ARE NOT TO SCALE DIMENSIONS FROM THIS DRAWING			
		Seatem House 39 Moreland St London EC1V 8BB client West Hill Projects Ltd		project 16 Cleveland Street London W1T 4HX	
THIS DRAWING IS COPYRIGHT					
scale 1:50 @A1 1:100 @A3	date issued 2019.07.12	drawn by CC	audited by HJ	drawing no 548.(1).1.005	revision A

CPM00000000 - 4124354000-17507070-0284800000 - PLANNING000



Architectural drawing showing the proposed street elevation and section CC.

The elevation features a symmetrical facade with two main doorways, each topped with a pediment and a transom, and a central window wall. The section below, labeled "Section_CC", shows three arched openings. The first arch is labeled "Dressing Room" and the second is labeled "Bathroom". Dashed lines indicate the vertical alignment between the section and the elevation.

Proposed Street Elevation
Section_CC

LIPTON
PLANT
ARCHITECTS

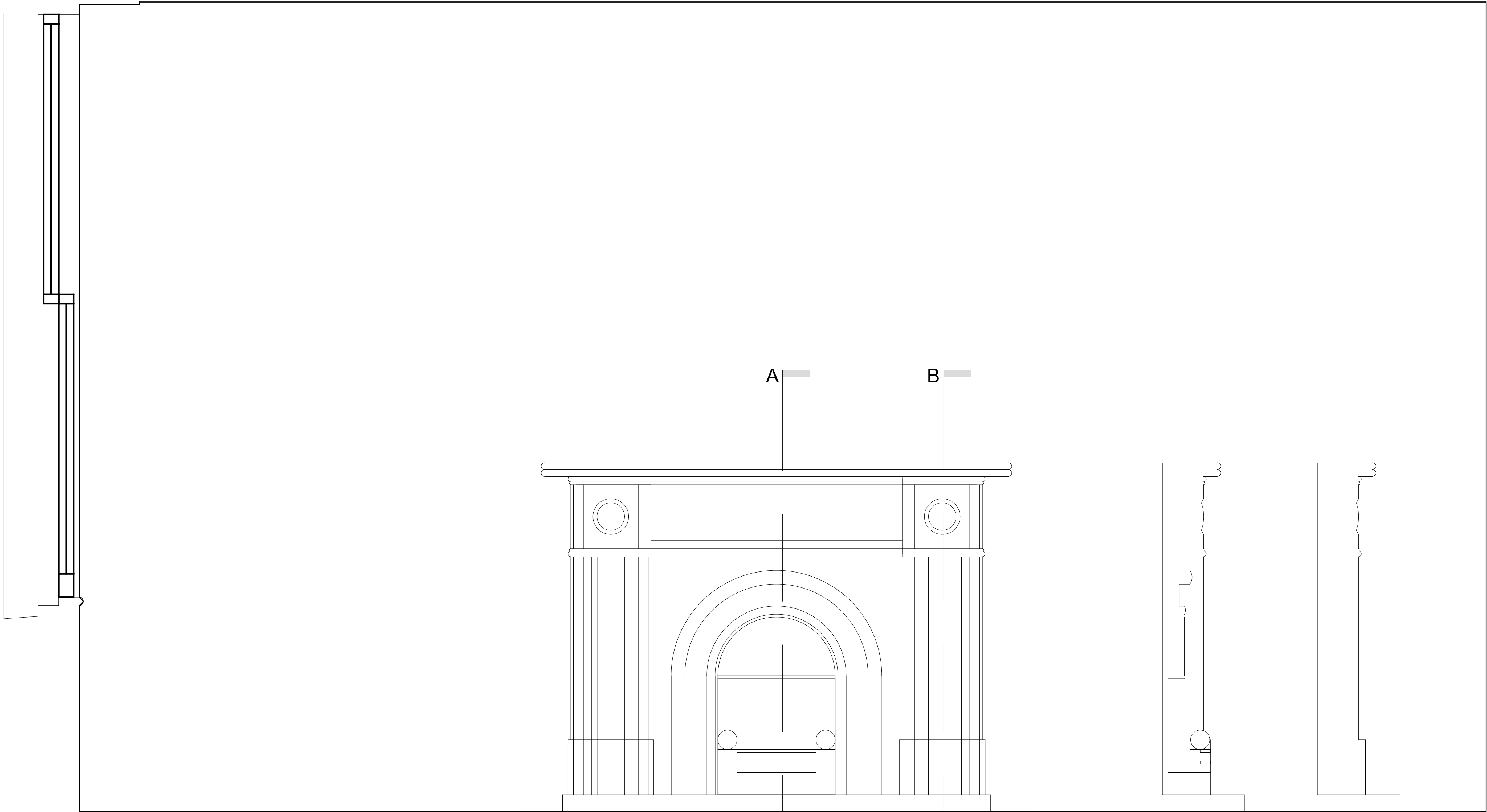
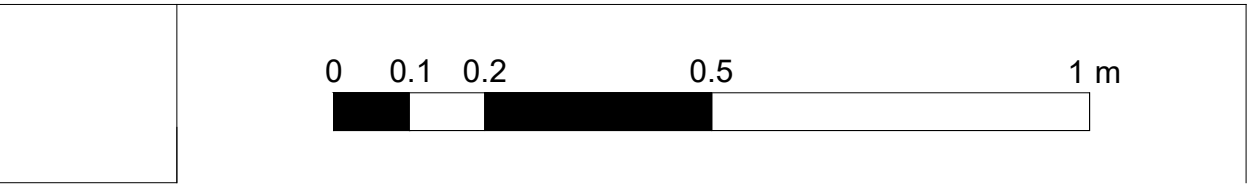
Seatem House 39 Moreland St London EC1V 8BB	T +44 (0)20 7288 1333 F +44 (0)20 7288 0333 E mail@lparchitects.co.uk W www.lparchitects.co.uk
client West Hill Projects Ltd	project 16 Cleveland Street London W1T 4HX

THIS DRAWING IS COPYRIGHT

scale 1:50 @A1 1:100 @A3	date issued 2019.07.12	drawn by CC	audited by HJ	drawing no 548.(1).2.001	revision A
--	----------------------------------	-----------------------	-------------------------	------------------------------------	----------------------



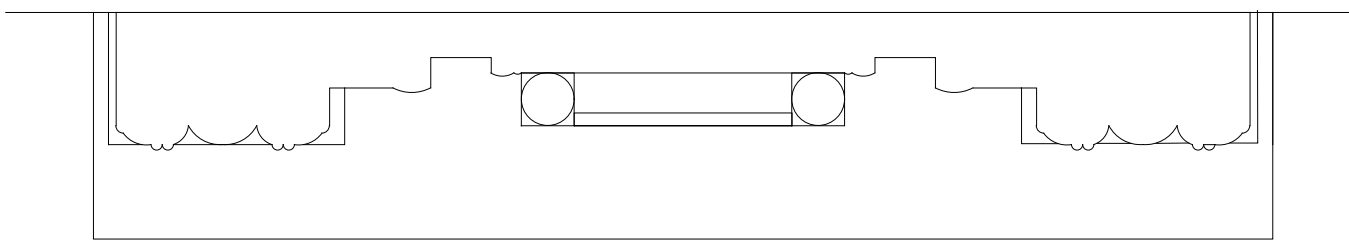
A	2019.07.19	For planning	CC	HJ
rev.	date	description	revised by	audited by
stage PLANNING	drawing title PROPOSED Section AA			
 <p>LIPTON PLANT ARCHITECTS</p>			<p>CONTRACTORS ARE NOT TO SCALE DIMENSIONS FROM THIS DRAWING</p> <p>Seatem House 39 Moreland St London EC1V 8BB</p> <p>T +44 (0)20 7288 1331 F +44 (0)20 7288 0331 E mail@lparchitects.co.uk W www.lparchitects.co.uk</p>	
			client West Hill Projects Ltd	project 16 Cleveland Street London W1T 4HX
scale 1:50 @A1 1:100 @A3	date issued 2019.07.12	drawn by CC	audited by HJ	drawing no 548 . (1) . 3.001
				revision A



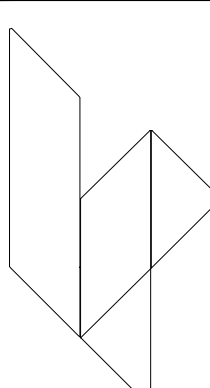
Elevation

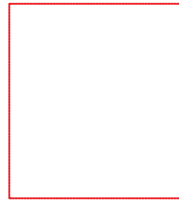
Section AA

Section BB

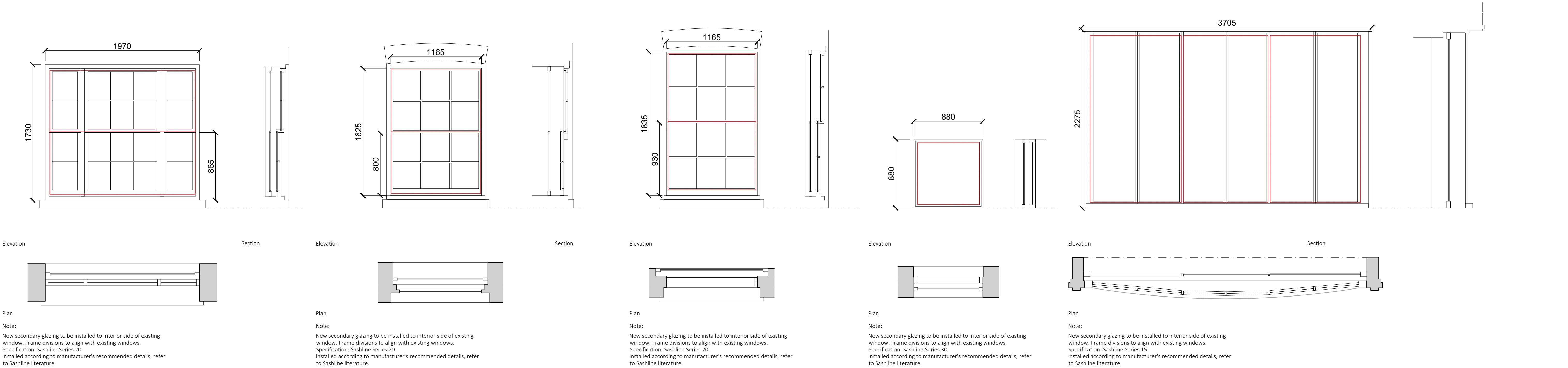


Plan

rev.	date	description		revised by	audited by
stage PLANNING	drawing title PROPOSED Fireplace details				
		CONTRACTORS ARE NOT TO SCALE DIMENSIONS FROM THIS DRAWING			
		Seatem House 39 Moreland St London EC1V 8BB		T +44 (0)20 7288 1333 F +44 (0)20 7288 0333 E mail@lparchitects.co.uk W www.lparchitects.co.uk	
		client West Hill Projects Ltd	project 16 Cleveland Street London W1T 4HX		
		THIS DRAWING IS COPYRIGHT			
scale 1:10 @A1 1:20 @A3	date issued 2019.07.12	drawn by CC	audited by HJ	drawing no 548.(1).4.001	revision --



Indicates outline of secondary
glazing frame behind



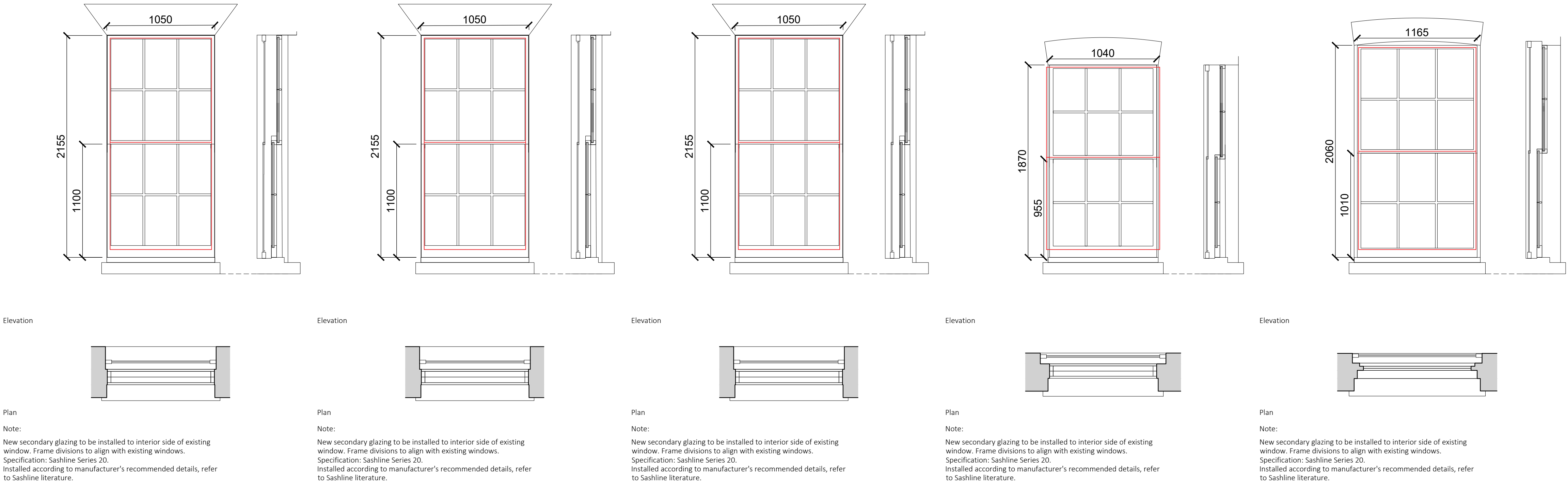
Window Type B - LG.01
Secondary Glazing Series 20

Window Type A - LG.02
Secondary Glazing Series 20

Window Type A - GF.01
Secondary Glazing Series 20

Window Type A - GF.02
Secondary Glazing Series 30

Window Type C - GF.03
Secondary Glazing Series 15



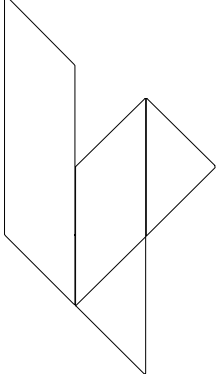
Window Type A - FF.01
Secondary Glazing Series 20

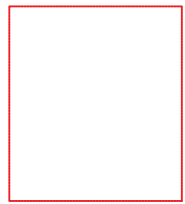
Window Type A - FF.02
Secondary Glazing Series 20

Window Type A - FF.03
Secondary Glazing Series 20

Window Type A - FF.04
Secondary Glazing Series 20

Window Type A - FF.05
Secondary Glazing Series 20

rev.	date	description	revised by	audited by	
stage PLANNING		drawing title WINDOW SCHEDULE Lower Ground, Ground & First Floor			
 <div>LIPTON PLANT ARCHITECTS</div>			CONTRACTORS ARE NOT TO SCALE DIMENSIONS FROM THIS DRAWING		
			Seatem House 39 Moreland St London EC1V 8BB		T +44 (0)20 7288 1333 F +44 (0)20 7288 0333 E mail@lparchitects.co.uk W www.lparchitects.co.uk
			client West Hill Projects Ltd	project 16 Cleveland Street London W1T 4HX	
			THIS DRAWING IS COPYRIGHT		
scale 1:25 @A1 1:50 @A3	date issued 2019.07.12	drawn by CC	audited by HJ	drawing no 548.(1).6.001	
				revision --	



Technical drawing of a window frame. The main view shows a rectangular frame with a grid pattern. The overall width is 1040 and the overall height is 1660. The frame is divided into two main sections: a top section with a height of 840 and a bottom section. The grid consists of 12 panes arranged in 2 rows and 6 columns. A side view on the right shows the frame's profile, including the glass and the frame structure.

Technical drawing of a window frame. The main view shows a rectangular frame with a grid pattern. Dimensions are indicated: a width of 1040 and a height of 1660. The height is divided into two sections: 840 for the lower section and 820 for the upper section. A cross-section view on the right shows the internal structure of the frame, including the glass pane and the surrounding frame material.

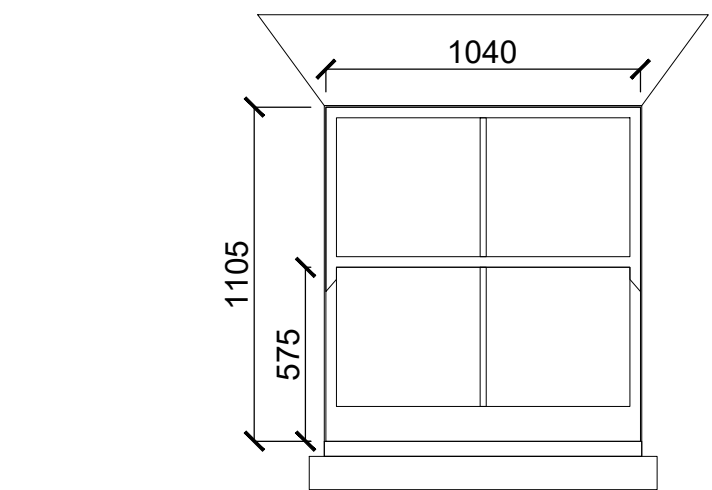
Technical drawing of a window frame. The main view shows a rectangular frame with a grid pattern. The overall width is 1040 and the overall height is 1000. The frame is divided into a grid of 12 panes (3 rows by 4 columns). The inner frame dimensions are 840 in width and 840 in height. A cross-section view on the right shows the frame's profile, including the glass pane and the frame's internal structure.

Technical drawing of a window with dimensions: width 1040, total height 1665, and lower section height 850.

Technical drawing of the window frame showing dimensions: width 1165, height 1630, and a section view on the right.

A cross-sectional diagram of a multi-layered structure. It features a central core with a textured, hatched appearance. This core is surrounded by a thick, solid white layer. The entire assembly is flanked by two grey, rectangular blocks on either side, which appear to be part of a larger structure or support. The diagram is a technical illustration showing the internal composition and layering of the component.

Existing Window Type A - 2F.05
Secondary Glazing Series 20



Technical drawing of a window with dimensions: width 1040, total height 995, and lower pane height 510.

Technical drawing of a window with dimensions: width 1165, total height 1160, and lower pane height 590.

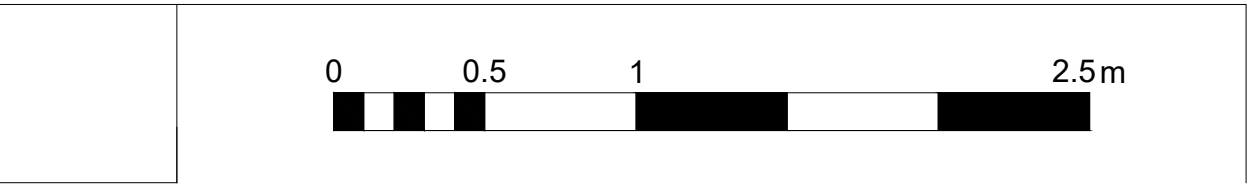
Technical drawing of a shaft-hub assembly. The shaft is shown with a key and a hub with a keyway. The drawing is a cross-section view showing the fit between the shaft and the hub.

A technical drawing of a shaft-hub assembly. The shaft is shown with a keyway, and the hub is shown with a corresponding keyway. The drawing is a cross-section view, showing the internal features of both components.

A schematic diagram showing a cross-section of a polymer matrix. It consists of a central horizontal bar with a textured, hatched pattern. This central bar is flanked by two vertical rectangular blocks, also with a hatched pattern, representing side regions or electrodes. The entire assembly is set against a plain background.

Window Type A - 3F.05

rev.	date	description		revised by		audited by			
stage PLANNING	drawing title WINDOW SCHEDULE Second & Third Floor		CONTRACTORS ARE NOT TO SCALE DIMENSIONS FROM THIS DRAWING						
			LIPTON PLANT ARCHITECTS		Seatem House 39 Moreland St London EC1Y 8BB client West Hill Projects Ltd			T +44 (0)20 7288 1333 F +44 (0)20 7288 0333 E mail@larchitects.co.uk W www.larchitects.co.uk project 16 Cleveland Street London W1T 4HX	
THIS DRAWING IS COPYRIGHT									
scale 1:25 @A1 1:50 @A3	date issued 2019.07.12	drawn by CC	audited by HJ	drawing no 548. (1). 6.002	revision --				



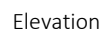
Door Type A - -1.01



Door Type B - 00.01



Door Type C - 00.02



Door Type A - 00.03



Door Type D - 01.01



Door Type D - 01.01

C:\Users\charleconciolo\AppData\Local\Temp\Temp1_2019.07.12_548(1)6.001_Door Schedule - Standard zip\548(1)6.001_Door Schedule.dwg 6/10/12 5:20 PM

MDF , sprayed semi matt finish

