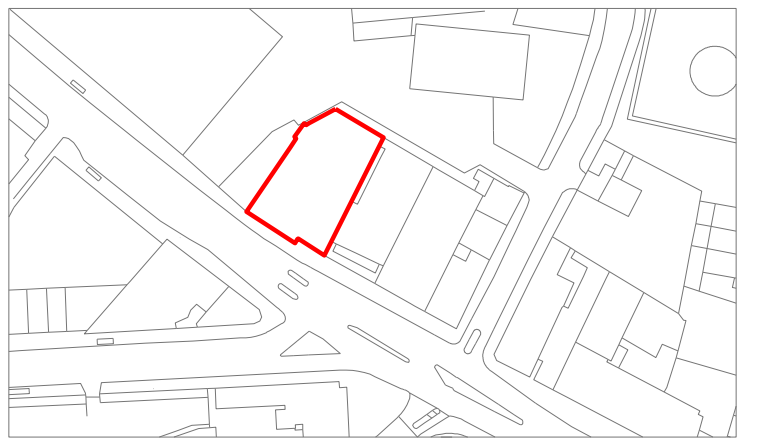




View from the top of Haverstock Hill looking down towards site

General Notes
 The drawing is copyright of Vabel LTD. All rights reserved. No reproduction in any material form is permitted without consent. Do not scale from this drawing. All dimensions are in mm unless stated otherwise. Dimensions, levels, sizes and location of particulars are to be verified by the contractor on site prior to engaging in works. This drawing may incorporate information from other professionals. Vabel LTD cannot accept responsibility for the integrity and accuracy of such information.



- Vabel Notice Board
- Speed Limit Zones
- Bus Stop
- Pedestrian Crossing Point
- Proposed Direction of Vehicle Travel
- Transportation Hub
- Development
- Buildings of Significance
- Chapter 8 Hoarding
Chapter 8 Hoardings put out each morning and cleared away at 15:00 hours
- Loading Bay
Loading Bay in operation between hours of 9:30 - 15:00
- Articulated Lorry Sizing

Rev	Date	Reason for Issue	Chk
IN03	29/07/19	Additional Route noted CMP	RR
IN02	09/07/19	Traffic Route revised for CMP	RR
IN01	11/06/19	For Internal Review	NE

VABEL
LONDON

531 Highgate Studios, 53-79 Highgate Road, London NW5 1TL
 Tel +44 (0)20 7183 6405 Email contact@vabel.co.uk

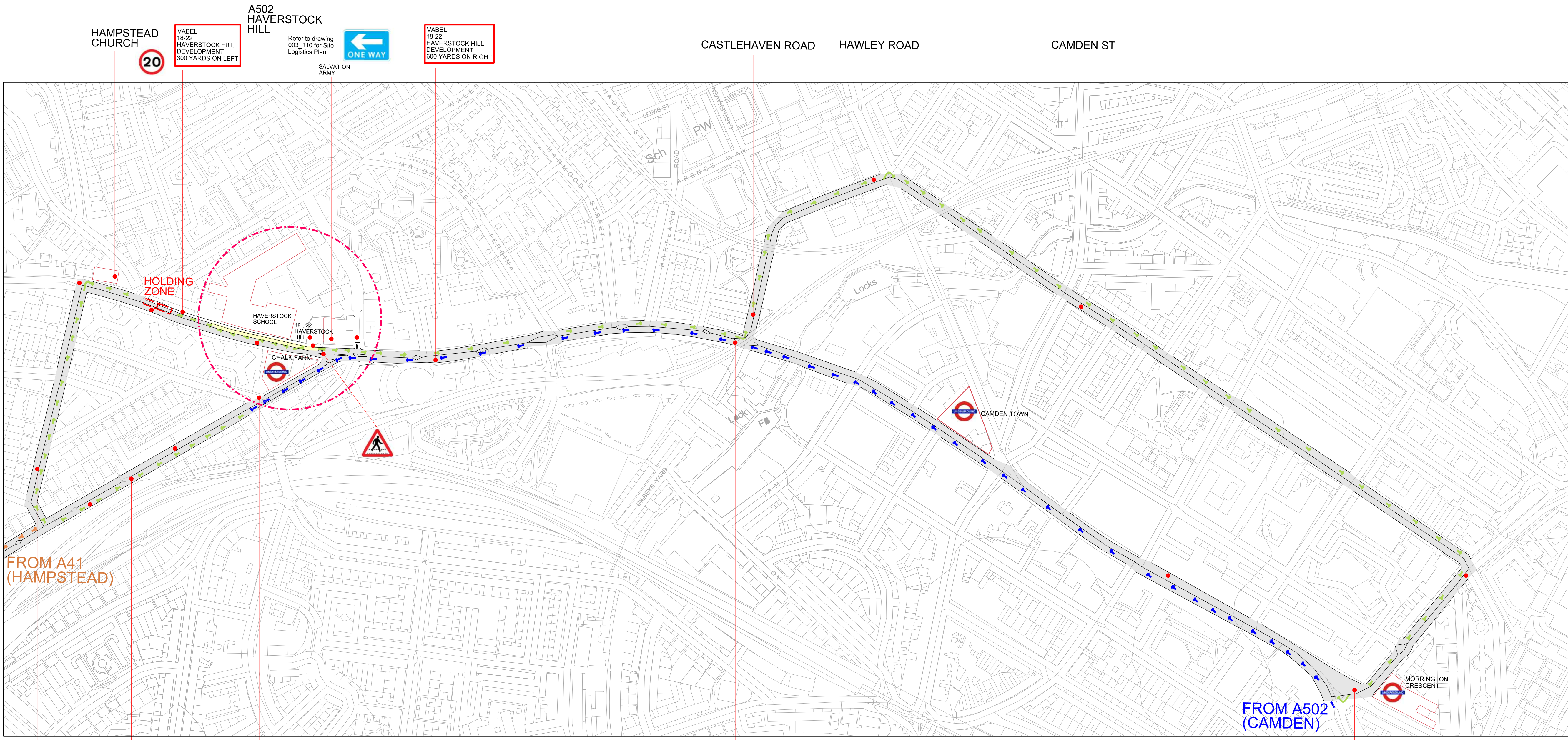
Project
 18-22 Haverstock Hill, NW3

Title
 Site Logistics
 Traffic Management Plan 01

Date	Scale @ A1	Drawn	Checked
11/06/19	1:3000	MB	RR

Status
 Information

Drawing Number	Revision
1901_03_150	IN03



ETON ROAD ADELAIDE ROAD



Front view of current site entrance



View from Camden looking towards site

CAMDEN HIGH STREET EVERSOLT ROAD CROWDALE ROAD