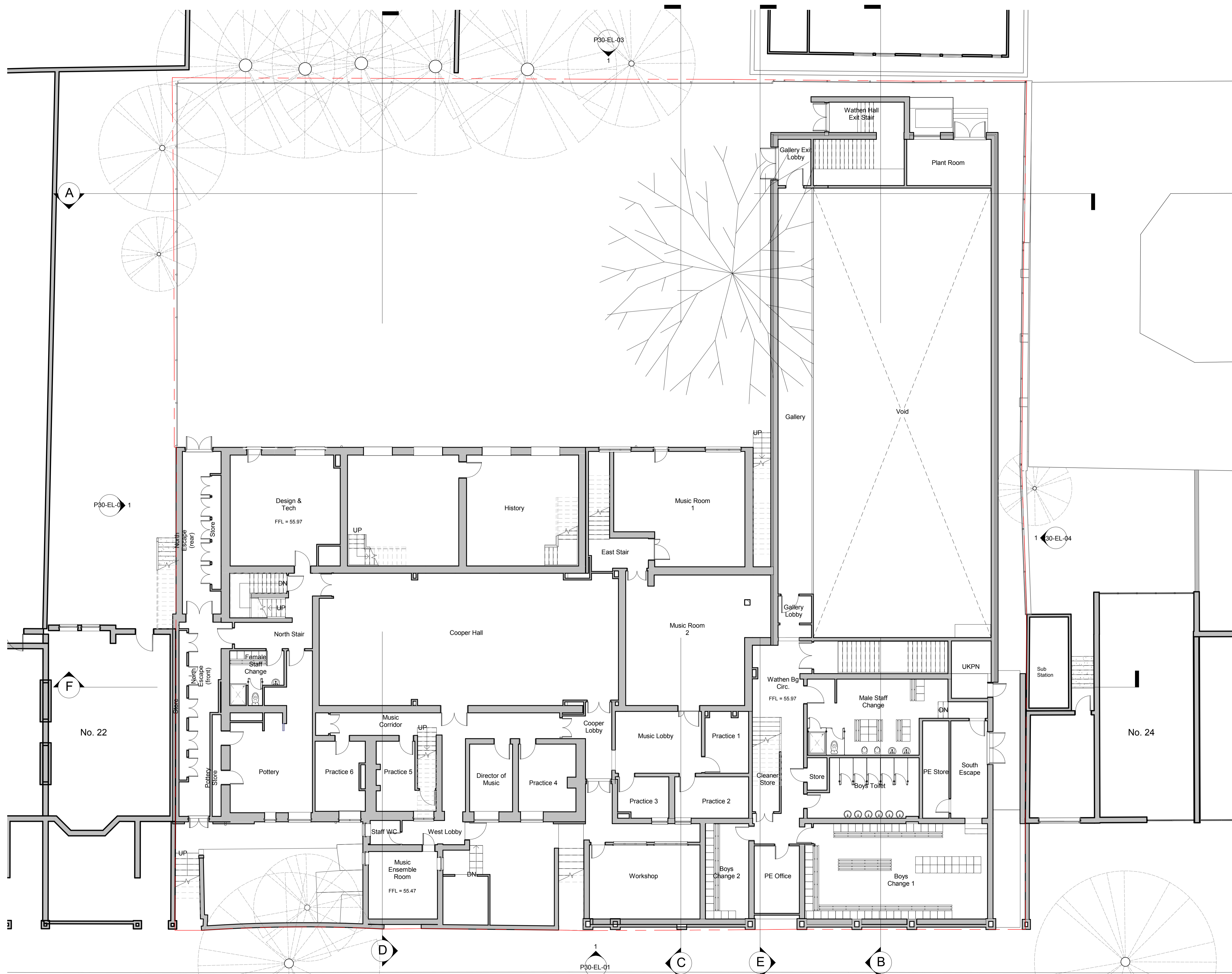


ISO A1 - 594mmx841mm



Existing L-02 Lower Ground Floor REV E
1 : 100

| DATE | REVISION | REV | DRW | CHK |
|----------|-------------------------------------|-----|-----|-----|
| 13.12.16 | Context added to plans | A | JL | JL |
| 17.01.18 | Graphical update to match proposals | B | JL | JL |
| 25.09.18 | Reduced Scheme for Pre Application | C | CB | KSB |
| 04.03.19 | PLANNING | D | CM | KSB |
| 04.07.19 | PLANNING - Revised Rear Elevation | E | CM | KSB |

This drawing has been prepared solely for the use of The Hall School and there are no representations of any kind made by NORR Consultants Limited to any party with whom NORR Consultants Limited has not entered into a contract

This drawing must not be used, reproduced or revised without written permission.

This drawing shall not be used for construction purposes until the "CONSTRUCTION" status appears under the Sheet Status.

Constructors must only work to figured dimensions which are to be checked on site. Do not scale from hard copy drawings

Keyplan

North Arrow

Detail Symbol

Detail No.
Sheet No.

NORR
NORR Consultants Limited.
An Ingenium International Company

SET OFFICE INFORMATION
www.norr.com

| | |
|---|-----------|
| Drawn CM | Date |
| Checked KSB | Date |
| Scale 1 : 100 @ A1 | |
| Client The Hall School | |
| Project The Hall Senior School | |
| Drawing Title Existing Lower Ground Floor Plan | |
| Sheet Status S4 - FOR APPROVAL | |
| Project No. IALN14-0046 | |
| Drawing No. P20-LG-01 | Rev. E |