

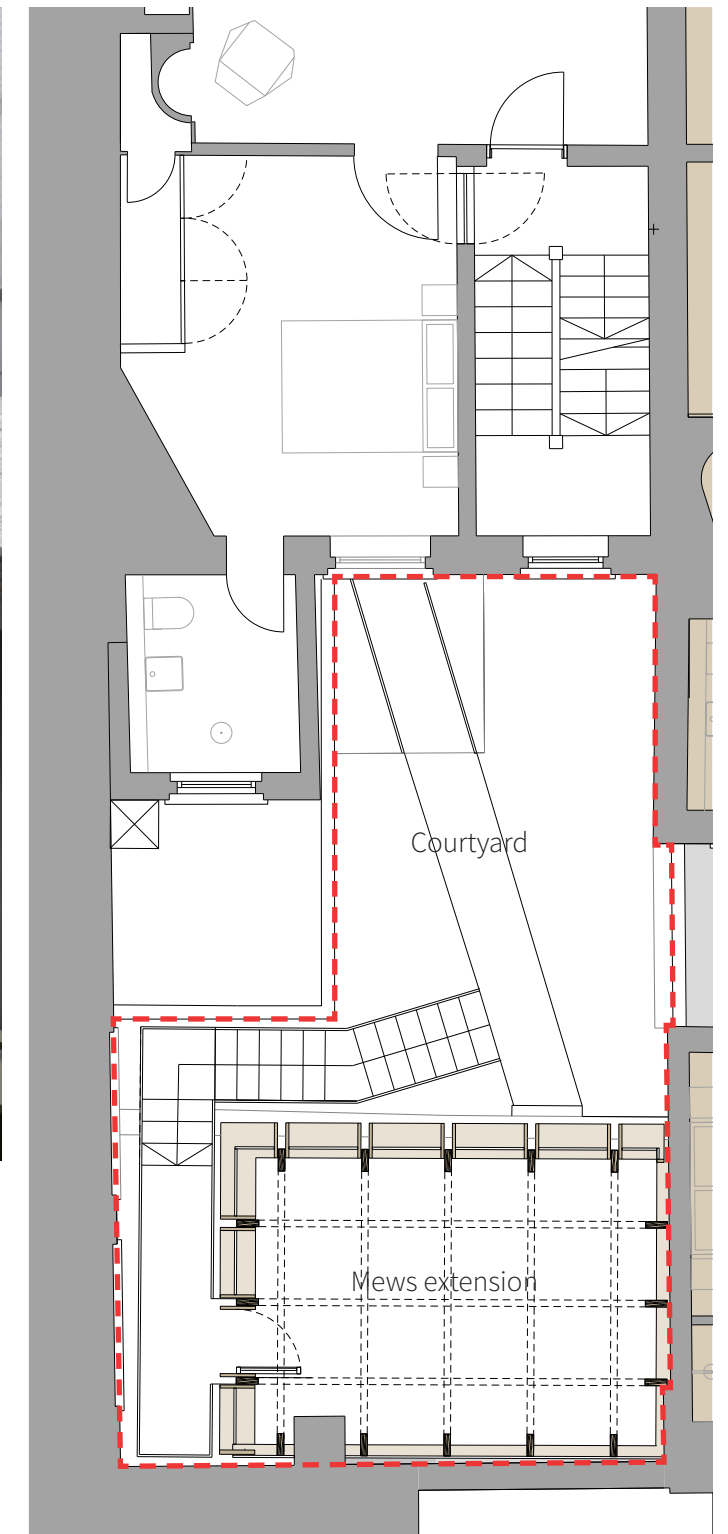


- 1 Double glazed unit to roof glazing:  
Outer pane - 6mm clear toughened glass with solar coating  
Cavity - 16mm argon cavity with black spacer  
Inner pane - 6mm clear toughened glass with Low E
- 2 Single glazing to vertical glazed faces - 6mm toughened clear glass
- 3 Powder-coated mild steel to stair, balustrade, door surround and pathway - Matt RAL7021
- 4 Timber frame and window surrounds - Glulam oak with Envirograf protective treatment - matt finish
- 5 Granite setts to yard - sawn, blue-grey by London Stone

Samples available on site



Proposed view - new mews workshop extension building set within an open courtyard showing materials. Refer to legend, bottom-left



Proposed plan - showing location of courtyard and mews workshop extension

Ian Chalk Architects

July 2019  
1401/St Giles Circus -  
7 Denmark Street -  
external material samples

ica