

# GLULAM

STRUCTURAL TIMBER BEAMS



AVAILABLE IN SPRUCE, LARCH AND OAK



C O W L E Y  
T I M B E R + P A R T N E R S

## GLULAM PRODUCT RANGE

COWLEY TIMBER AND PARTNERS HAVE BEEN CONSTRUCTING BUILDINGS FROM GLULAM TIMBER FOR OVER 40 YEARS. OUR EXPERIENCE OF TIMBER SELECTION HAS ENABLED US TO SOURCE THE BEST AND HIGHEST QUALITY STRUCTURAL BEAMS, BOTH STRAIGHT AND CURVED, FOR BUILDING OUR BESPOKE PROJECTS.

WE ARE NOW ABLE TO OFFER TO OUR CUSTOMERS THE SAME MATERIALS THAT COWLEY SPECIFY IN THEIR OWN CONTRACTS. WE HOLD IN STOCK A LARGE SELECTION OF HIGH QUALITY STRUCTURAL BEAMS IN A VARIETY OF SPECIES, SIZES AND FINISHES WHICH ARE AVAILABLE TO PURCHASE DIRECT.

### PEFC GL28H EUROPEAN SPRUCE GLULAM BEAMS WITH CLEAN PLANED FINISH

MM	100	140	200	240	280	320	360	400	440	480	520
100	✓		✓	✓	✓	✓	✓	✓			
120				✓	✓	✓	✓	✓	✓		
140		✓		✓	✓	✓	✓	✓	✓		
160							✓	✓	✓	✓	✓

### PEFC GL24H LARCH GLULAM BEAMS WITH CLEAN PLANED FINISH

MM	215	245	275	310	340	370	400	435
115	✓	✓	✓	✓	✓	✓	✓	
140		✓	✓	✓	✓	✓	✓	✓

### PEFC EUROPEAN OAK GLULAM BEAMS WITHOUT SAPWOOD & WITH CLEAN PLANED FINISH

MM	140	160	200	240	280	320	360	400	440
80		✓	✓	✓	✓	✓			
100			✓	✓	✓	✓	✓		
120				✓	✓	✓	✓	✓	
140	✓				✓	✓	✓	✓	✓

WE CAN ALSO OFFER A BESPOKE MACHINING AND FABRICATION SERVICE.





# GLULAM



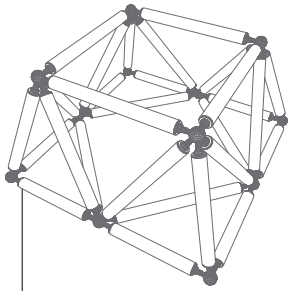
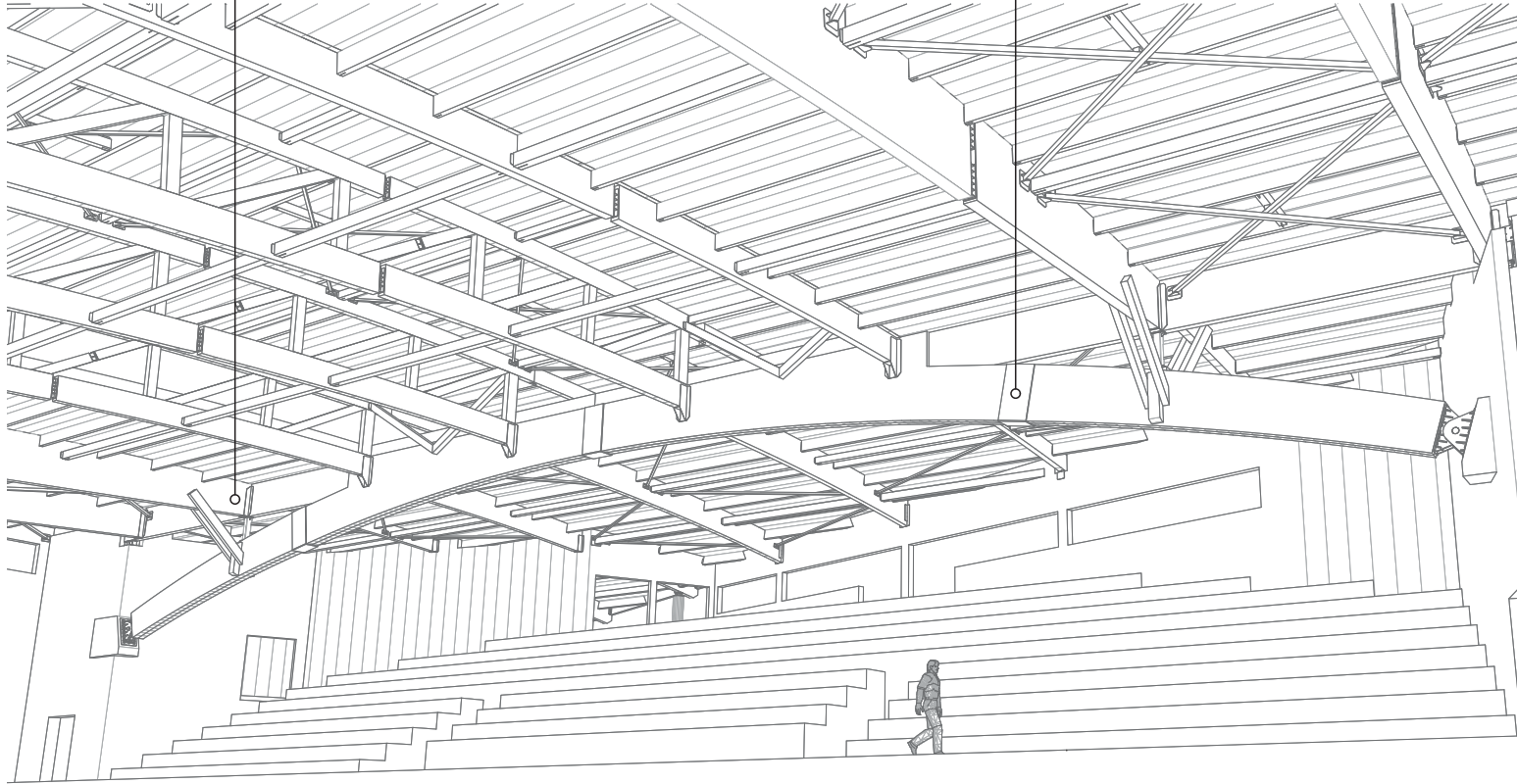
Integrated engineering : Structural design, CAD drawings, CNC programming  
 Species : soft and hardwood  
 Bespoke shapes, fully machined, ready to install  
 Special shapes : CNC lathe and double curves



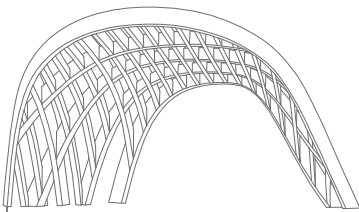
# RESIX



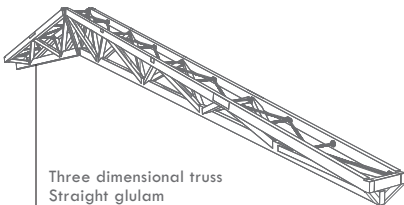
High performance connection  
 Exceptional mechanical resistance  
 Uniformly distributed load  
 Tight joint assembly  
 Adapted for transport (splice connection)



Three dimensional structure  
 Cylindrical glulam



Portal frame  
 Double curved glulam



Three dimensional truss  
 Straight glulam





## COWLEY TIMBER + PARTNERS LTD

THE QUARRY GRANTHAM ROAD WADDINGTON LINCOLN LN5 9NT

**T:** 01522 720022 **F:** 01522 723681

**E:** MAIL@COWLEYTIMBER.CO.UK **W:** WWW.COWLEYTIMBER.CO.UK

REGISTERED OFFICE: 41 PEAR TREE STREET LONDON EC1V 3AG



ALL WOODS USED IN THE  
MANUFACTURE OF OUR  
CLADDING ARE FROM  
SUSTAINABLE FORESTS