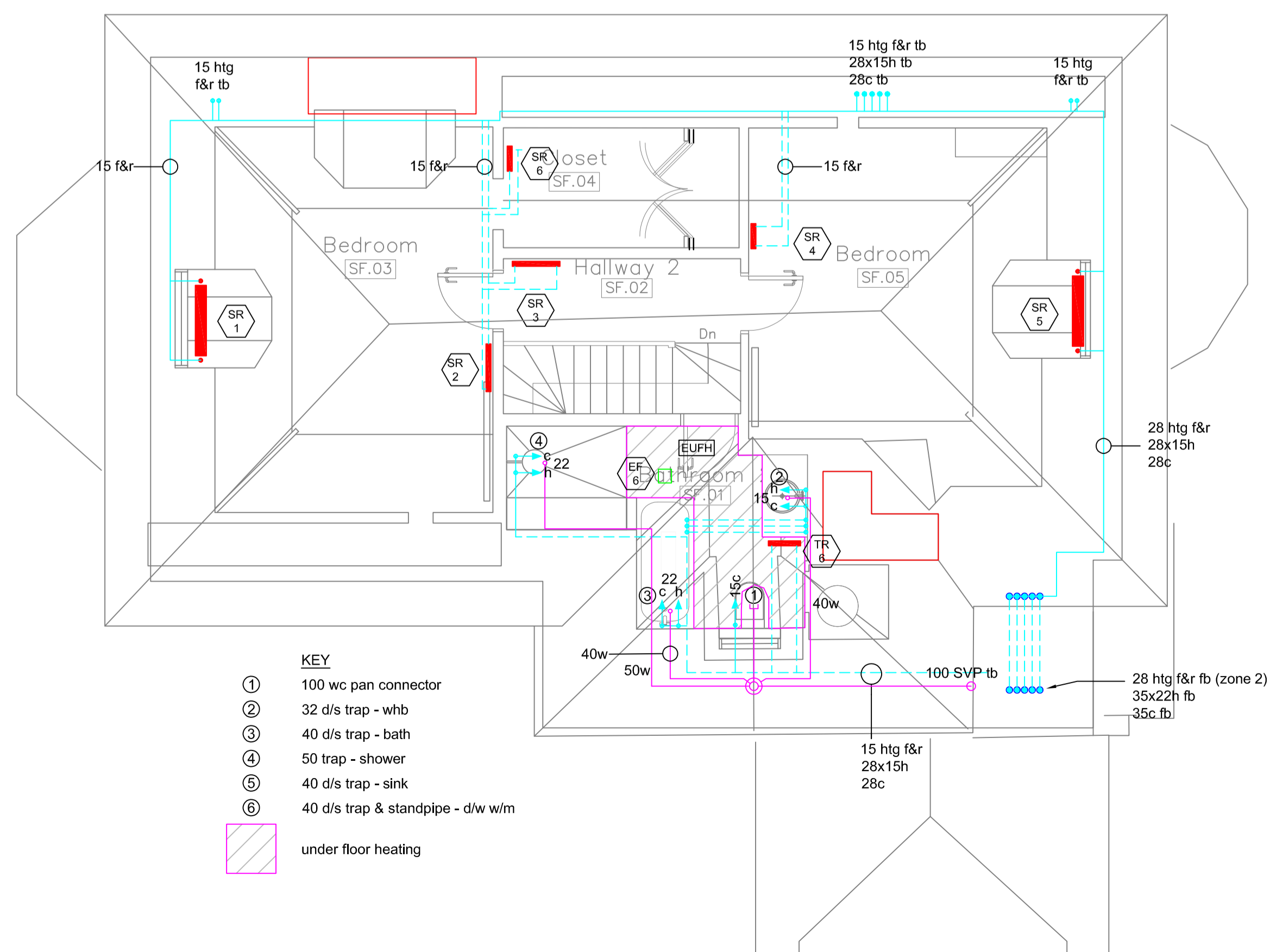
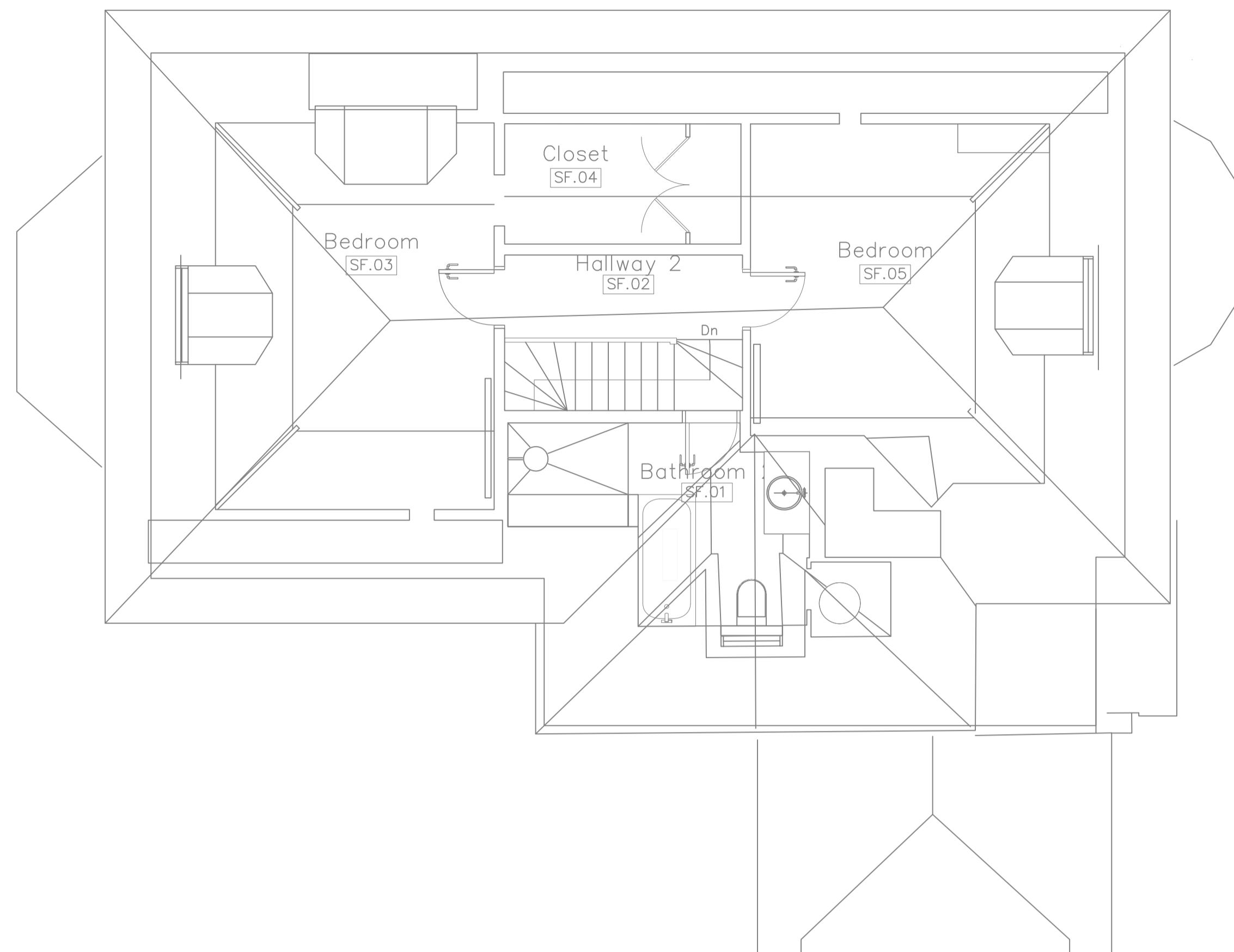


NOTE:
 The general principle for the services proposals is to conceal services distribution in floors and walls using existing voids and service routes wherever feasible



Rev	Item	Date
A	MECH SERVICES UPDATED TO LATEST BUILDING DRAWINGS	JULY 19

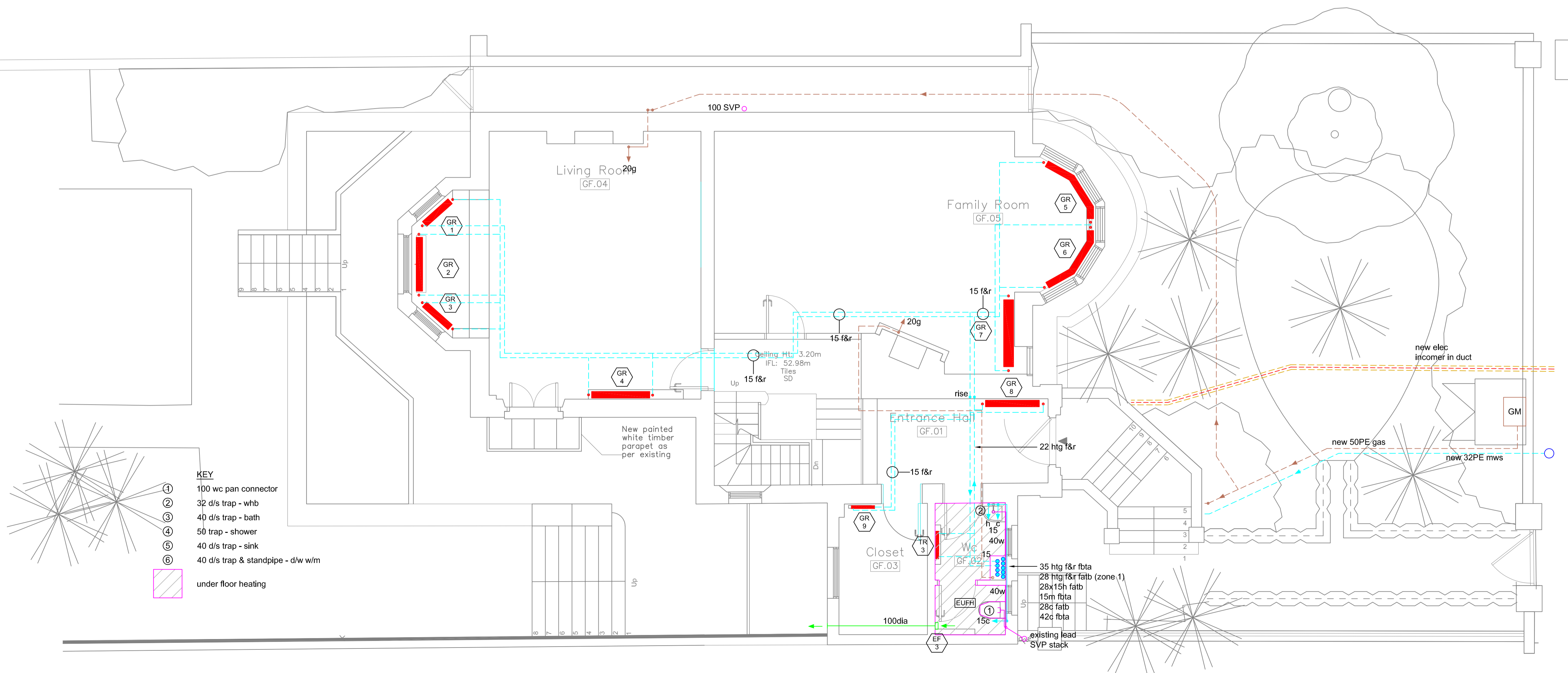
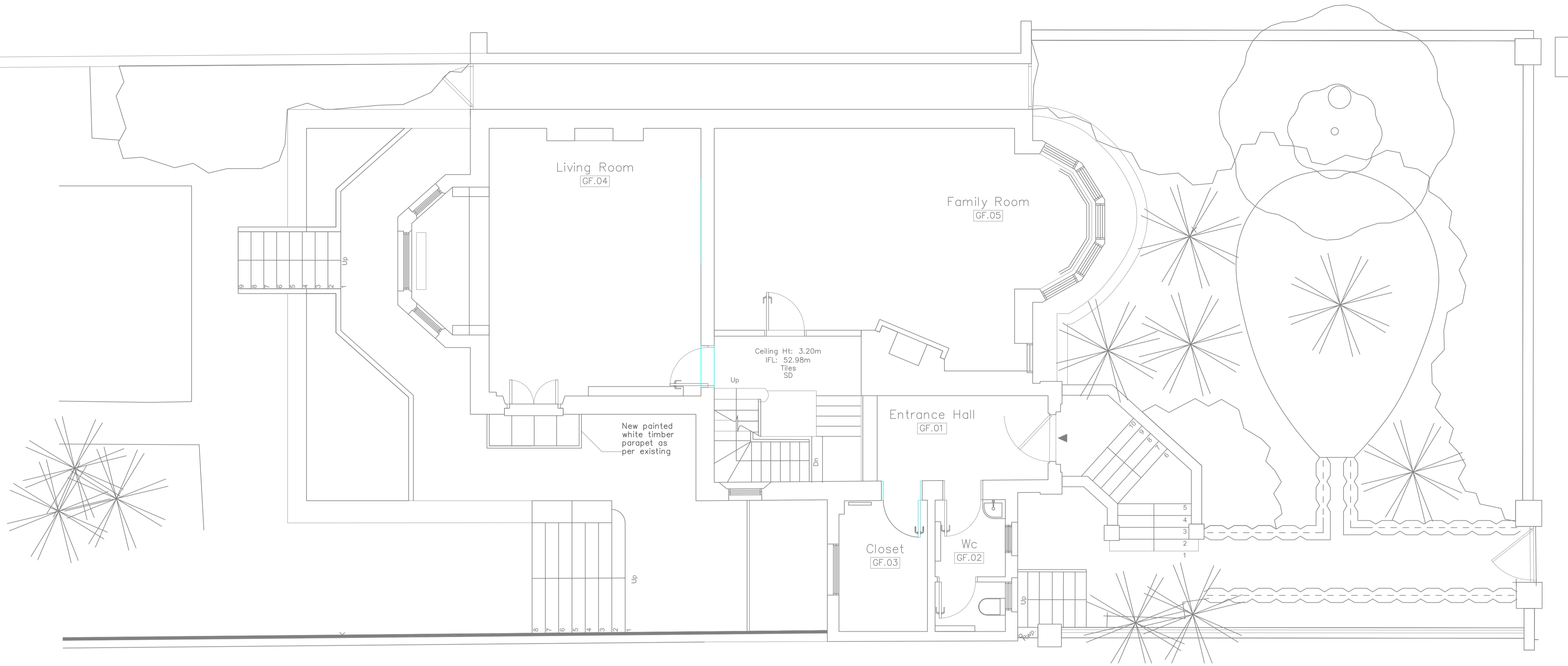
Project
31 Steeles Rd

Title
**2nd Floor
 Indicative Proposed Mech Services**

Date Nov 18	Scale 1:50 @ A1
DRG No PJA/9899/ME4	Rev A
DRN SJ	CHK PJ

PRJ & A
 PETER R. JONES & ASSOCIATES
 BUILDING SERVICES CONSULTING ENGINEERS
 160 BOURNE VALE
 HAYES
 BROMLEY
 KENT BR2 7LU
 Tel/Fax: 020-8462-2520

NOTE:
The general principle for the services proposals is to conceal services distribution in floors and walls using existing voids and service routes wherever feasible



Rev	Item	Date
A	MECH SERVICES UPDATED TO LATEST BUILDING DRAWINGS	JULY 19

Project
31 Steeles Rd

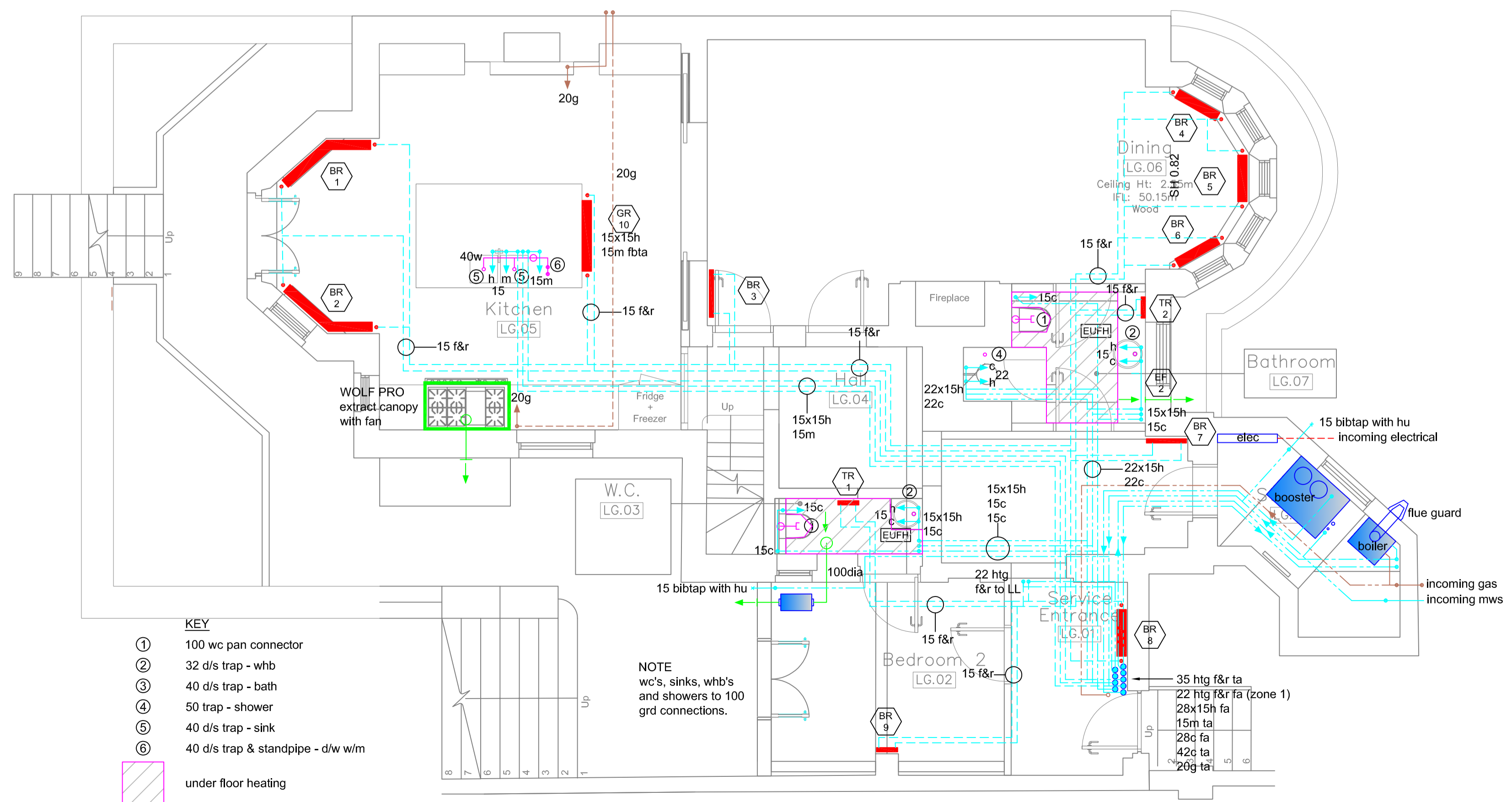
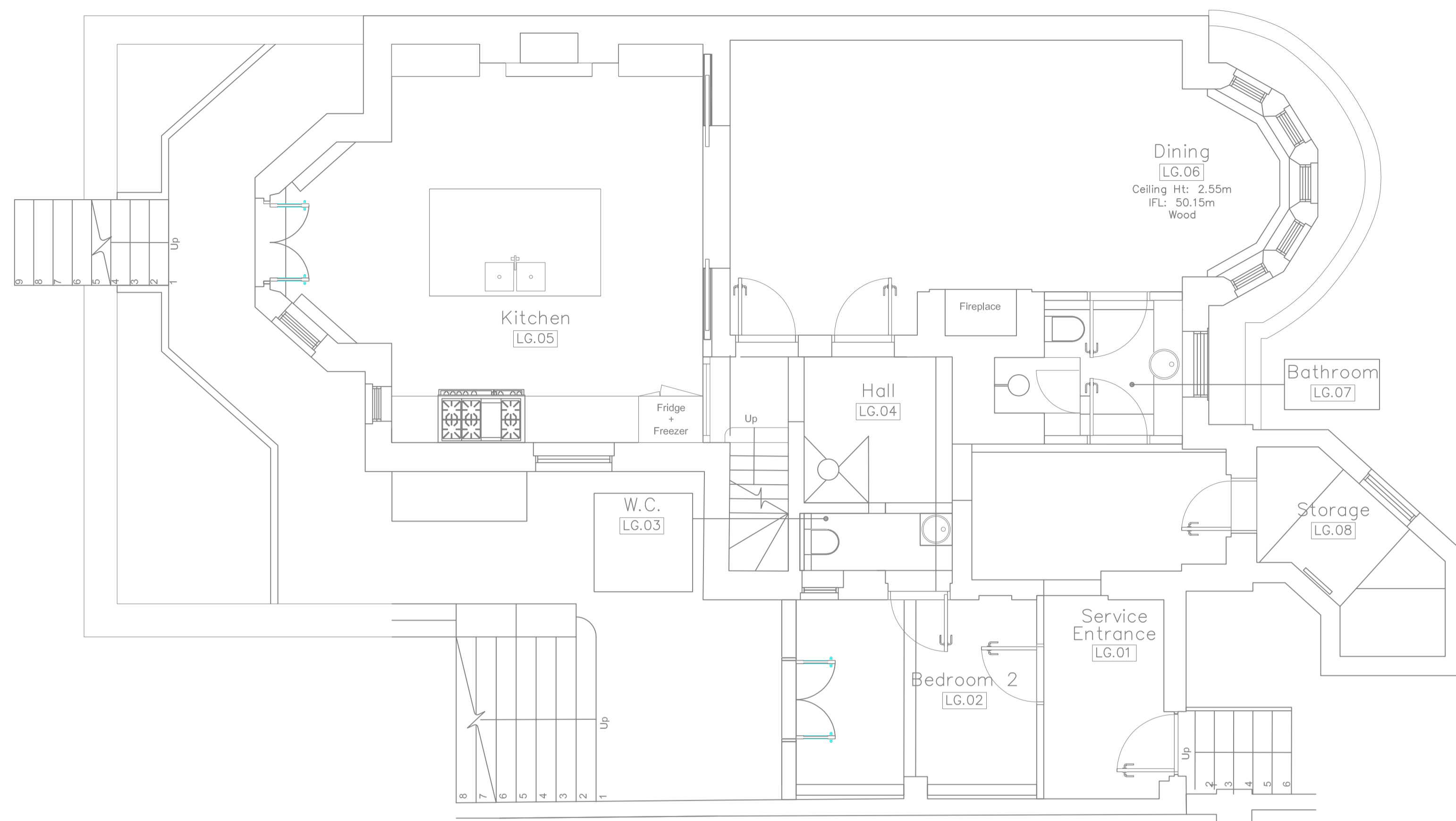
Title
Ground Indicative Proposed Mech Services

Date	Scale
Nov 18	1:50 @ A1

DRG No	Rev	DRN	CHK
PJA/9899/ME2	A	SJ	PJ

PRJ & A
PETER R. JONES & ASSOCIATES
 BUILDING SERVICES CONSULTING ENGINEERS
 160 BOURNE VALE
 HAYES
 BROMLEY
 KENT BR2 7LU
 Tel/Fax: 020-8462-2520

NOTE:
The general principle for the services proposals is to conceal services distribution in floors and walls using existing voids and service routes wherever feasible



- KEY**
- ① 100 wc pan connector
 - ② 32 d/s trap - whb
 - ③ 40 d/s trap - bath
 - ④ 50 trap - shower
 - ⑤ 40 d/s trap - sink
 - ⑥ 40 d/s trap & standpipe - d/w w/m
 - under floor heating

NOTE
wc's, sinks, whb's and showers to 100 grd connections.

A MECH SERVICES UPDATED TO LATEST BUILDING DRAWINGS		JULY 19	
Rev	Item	Date	
Project 31 Steeles Rd			
Title Lower Ground Indicative Proposed Mech Services			
Date Nov 18	Scale 1:50 @ A1		
DRG No PJA/9899/ME1	Rev A	DRN SJ	CHK PJ
<p>PETER R. JONES & ASSOCIATES BUILDING SERVICES CONSULTING ENGINEERS 160 BOURNE VALE HAYES BROMLEY KENT BR2 7LU Tel/Fax: 020-8462-2520</p>			