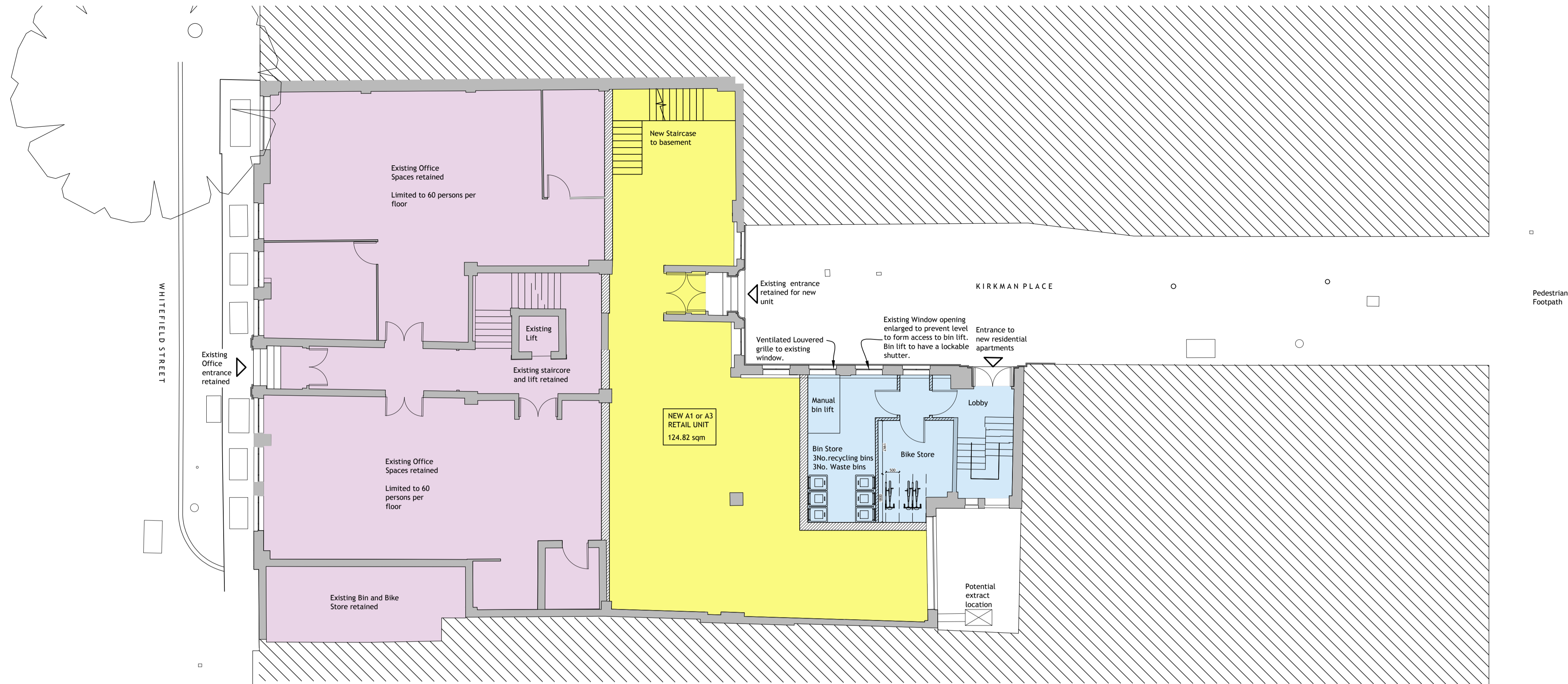


Contractors are to check all levels and dimensions before work is put in hand, and any discrepancies are to be referred to the architects

REV	DATE	DESCRIPTION	DWN	CHKD
P1	11.09.18	Preliminary Issue	EK	SG
P2	15.05.19	Drawings updated to extended survey	EK	SG



**Proposed Ground Floor Plan**

Remaining Office Space:  
GIA 227.80 sqm / 2452.02 sqft  
NIA 185.29 sqm / 1994.44 sqft

New Retail Space:  
GIA 124.82 sqm / 1343.55 sqft

Residential (bin and bike store):  
GIA 38.12 sqm / 410.32 sqft

LEGEND	
	Existing Walls
	Proposed Walls
	Retail
	Office
	Residential Apartments

## Planning



Architects + Interior Designers Limited  
123 NEW LONDON ROAD, CHELMSFORD,  
ESSEX. CM2 0QT  
TEL: +44 (0) 1245 269755 FAX: +44 (0) 1245 250310  
E-MAIL: admin@lap-architects.co.uk  
[www.lap-architects.com](http://www.lap-architects.com)

project

Kirkman House.  
Whitfield Street.  
W1T 2RF

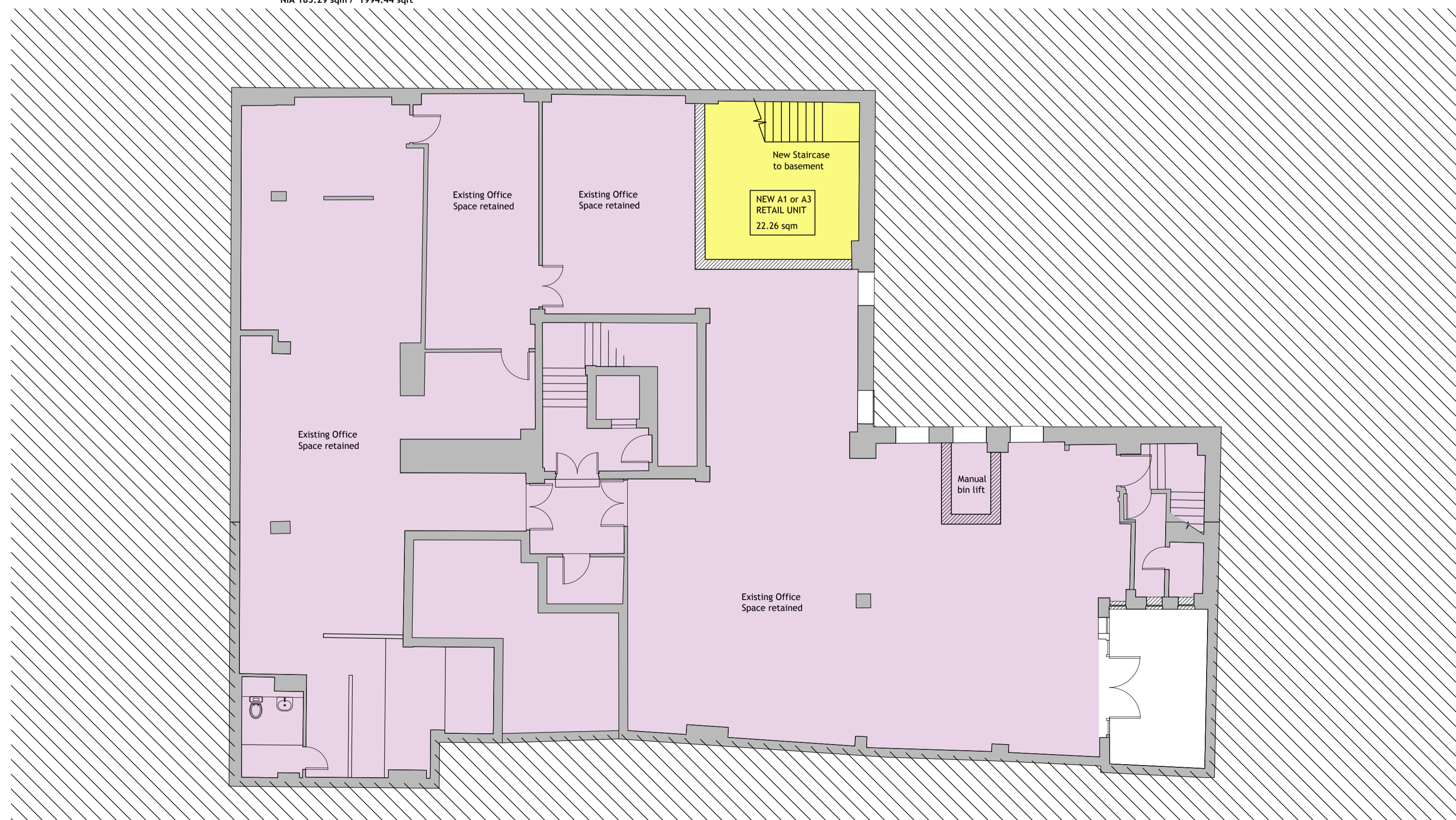
client

Pearl & Coutts.

drawing title

Proposed Basement &  
Ground Floor Plans

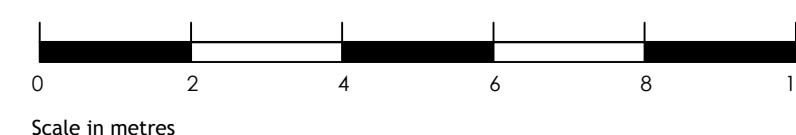
drawing number	revision
8491/09	P1 P2
scale 1/100@A1	checked SG
	drawn EK
	date September 2018



**Proposed Basement Plan**

Remaining Office Space:  
GIA 426.55 sqm / 4591.35 sqft  
NIA 376.0 sqm / 4047.23 sqft

New Retail Space:  
GIA 22.26 sqm / 239.60 sqft



This drawing is the property of LAP Architects + Interior Designers Ltd. and must not be copied or reproduced in any way in whole or in part without the express permission of LAP Architects + Interior Designers Ltd. Copyright © LAP Architects + Interior Designers Ltd.