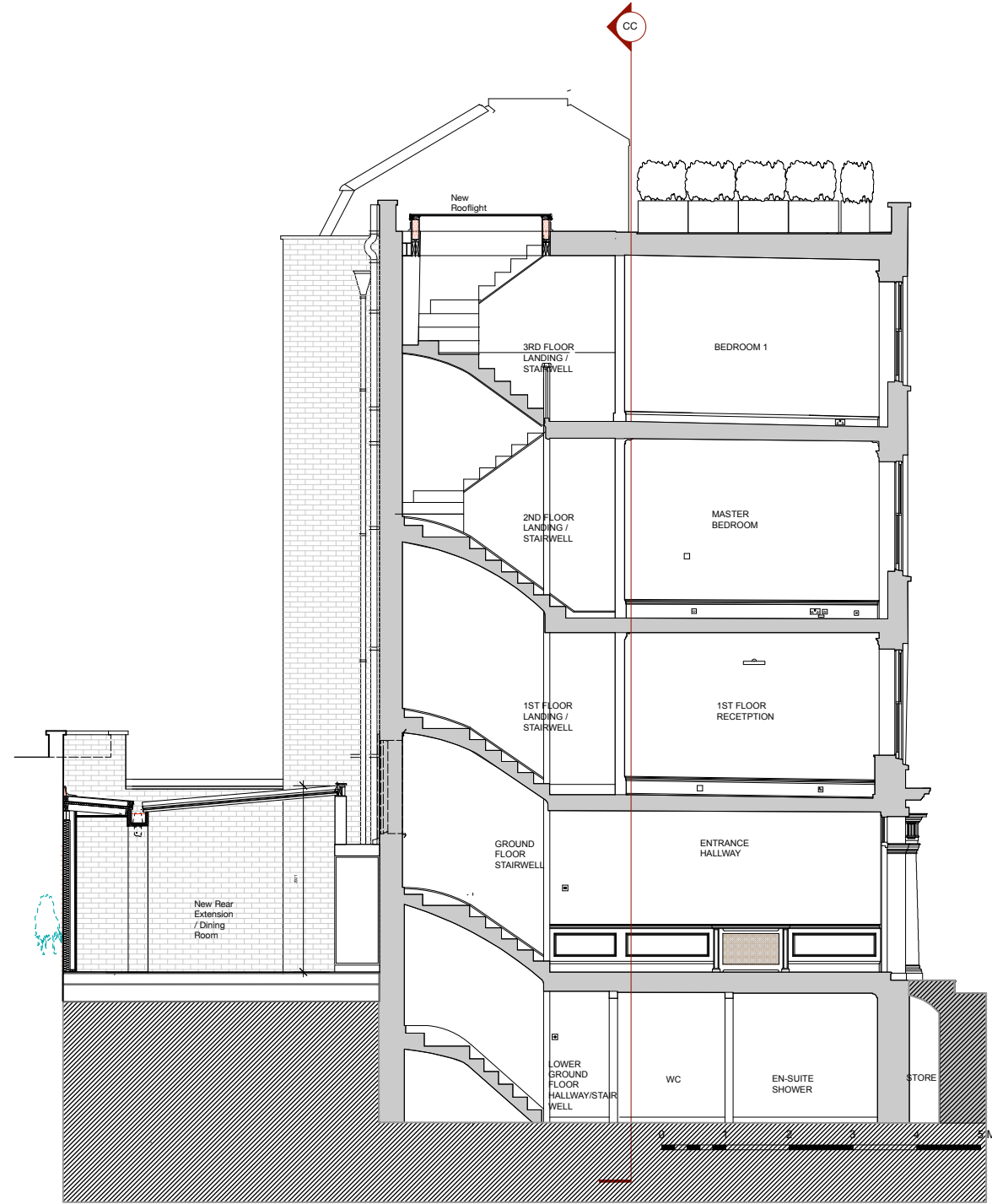


GENERAL NOTES:
All dimensions to be checked on site prior to commencement of any works, and/or preparation of any shop drawings.
Sizes of and dimensions to any structural elements are indicative only. See structural engineers drawings for actual sizes / dimensions.
Sizes of and dimensions to any service elements are indicative only. See service engineers drawings for actual sizes and dimensions.
This drawing to be read in conjunction with all relevant Architect's drawings, specifications and other Consultants' information.

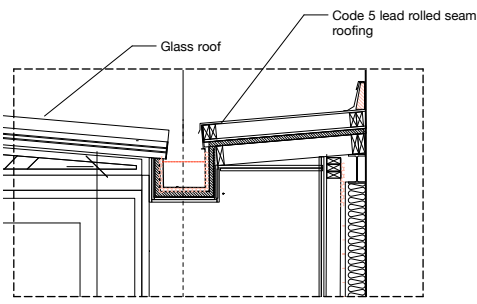
DO NOT SCALE FROM THIS DRAWING.



1 PROPOSED SECTION AA
1:50 @A1

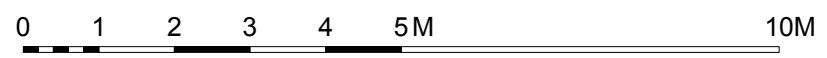


2 PROPOSED SECTION BB
1:50 @A1



Scale 1:20

Arch above window to basement retained at low level. Masonry above removed. Retained masonry Arch is under island. Vision glass at end of island and above lightwell.



A	Drawing revised	16.05.2019	
revision	description	date	revised
PROPOSED			
PLANNING			
Sacks Maguire Architects 155a Regents Park Road London NW1 8BB Telephone 020 7722 9298 fax 020 7586 9059			
Project 3 Upper Terrace, London - NW3 6RH			
Title Proposed Section AA & BB			
Client David Loewi, Rolant Hergert			
scale	1:50 @A1 1:100 @A3	drawn	huld
job number	682	drawing number	P110
		date	June 2018
		revision	A