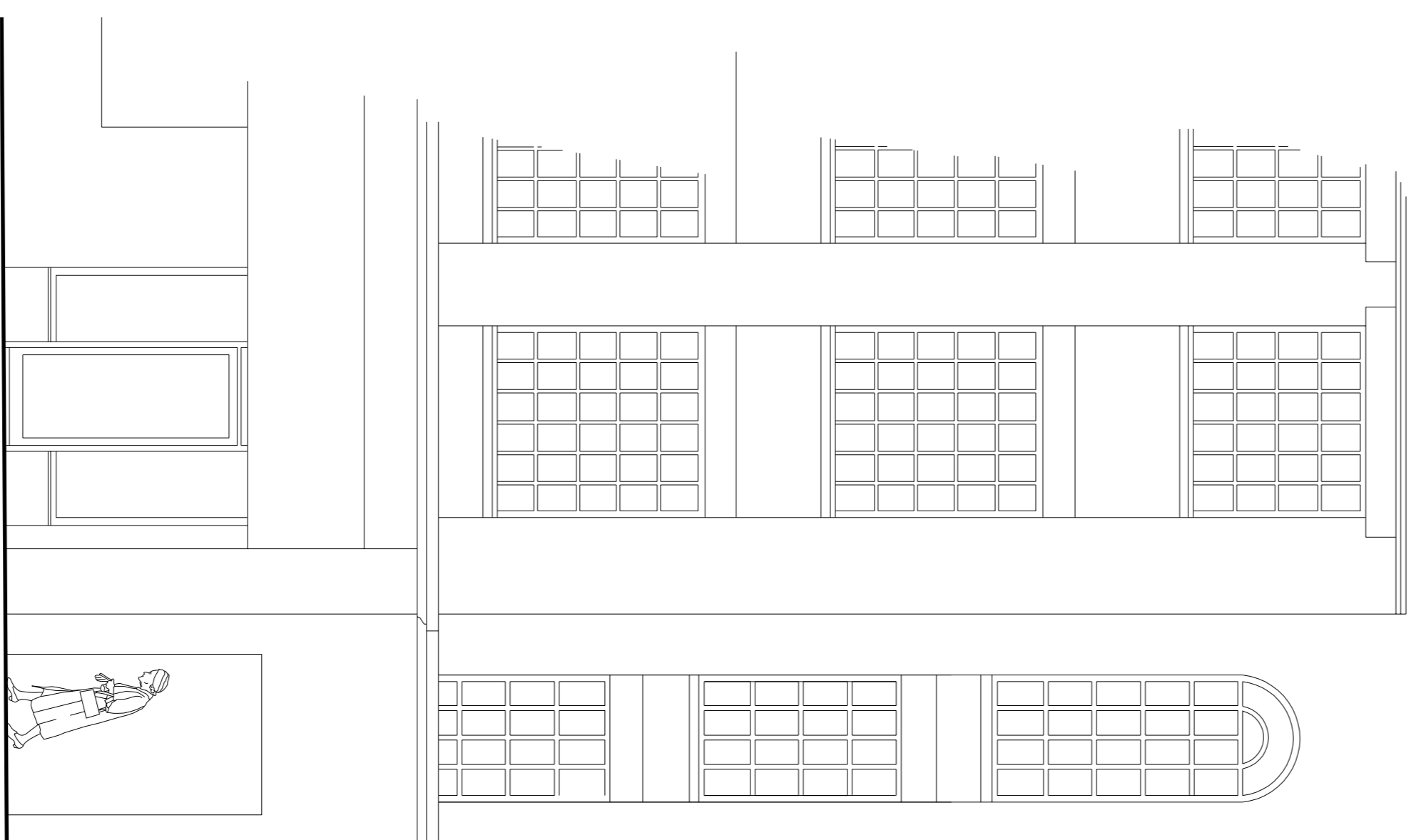


**KIRBY STREET ELEVATION  
(WEST FACING)**

**GREVILLE STREET**

- 5 - FSL 114.83
- 4 - FSL 111.98
- 3 - FSL 109.13
- 2 - FSL 106.28
- 1 - FSL 103.43



Please note this DWG drawing has been produced by converting a PDF file from others, so we cannot guarantee it's dimensional accuracy.

© The copyright of this drawing remains with William Cook Associates and is not to be reproduced, stored in a retrieval system, or transmitted in any form or by any means, electronic, mechanical, photocopying, recording, or by any information storage and retrieval system, without the prior written permission of William Cook Associates.

**Notes:**

Rev.	Description	Date	By	Rev.	Description	Date	By

Client: **Stone Property Investments & City Apartments Ltd**  
 Project No: **18043**

Project: **4th + 5th Floor Alterations Atelier House 29-31 Greville St. London EC1N 8AF**

Drawing Title: **West Elevation as Existing**

Drawn by: **RG** Checked by: **Scale @ A1: 1:50**  
 Date: **April 2019**  
 Status: **PRELIMINARY**  
 Drawing No.: **211** Rev. No.: **P1**

**Cook Associates** Architects | Engineers  
 Capital House, 3 Jubilee Way, Faversham, Kent, ME13 8GD  
 T: +44 (0) 1795 532834 E: mail@cook-design.com W: www.cook-design.com