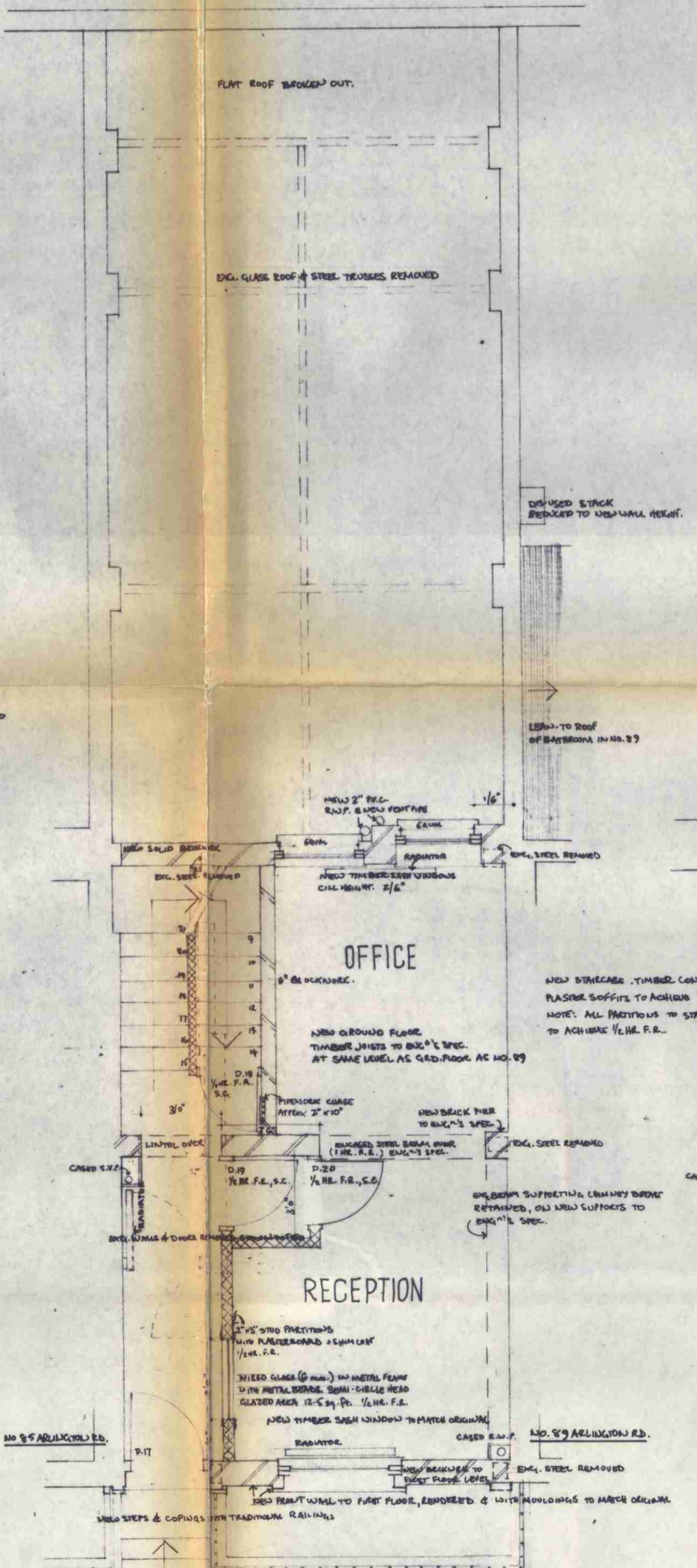
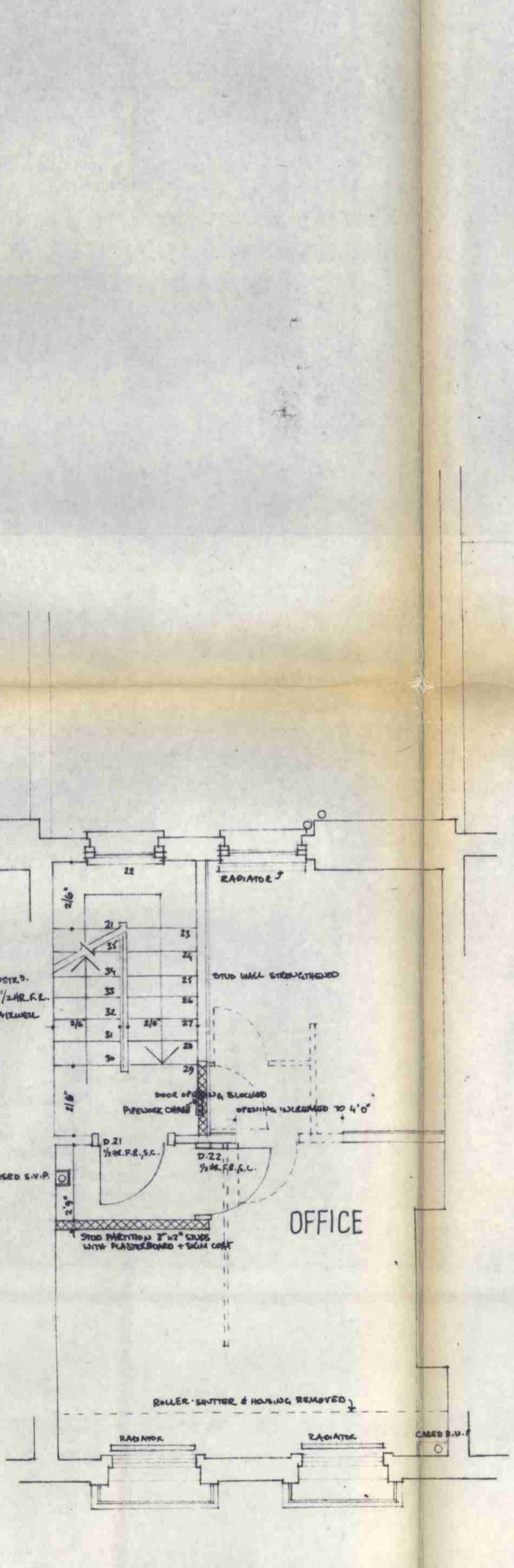


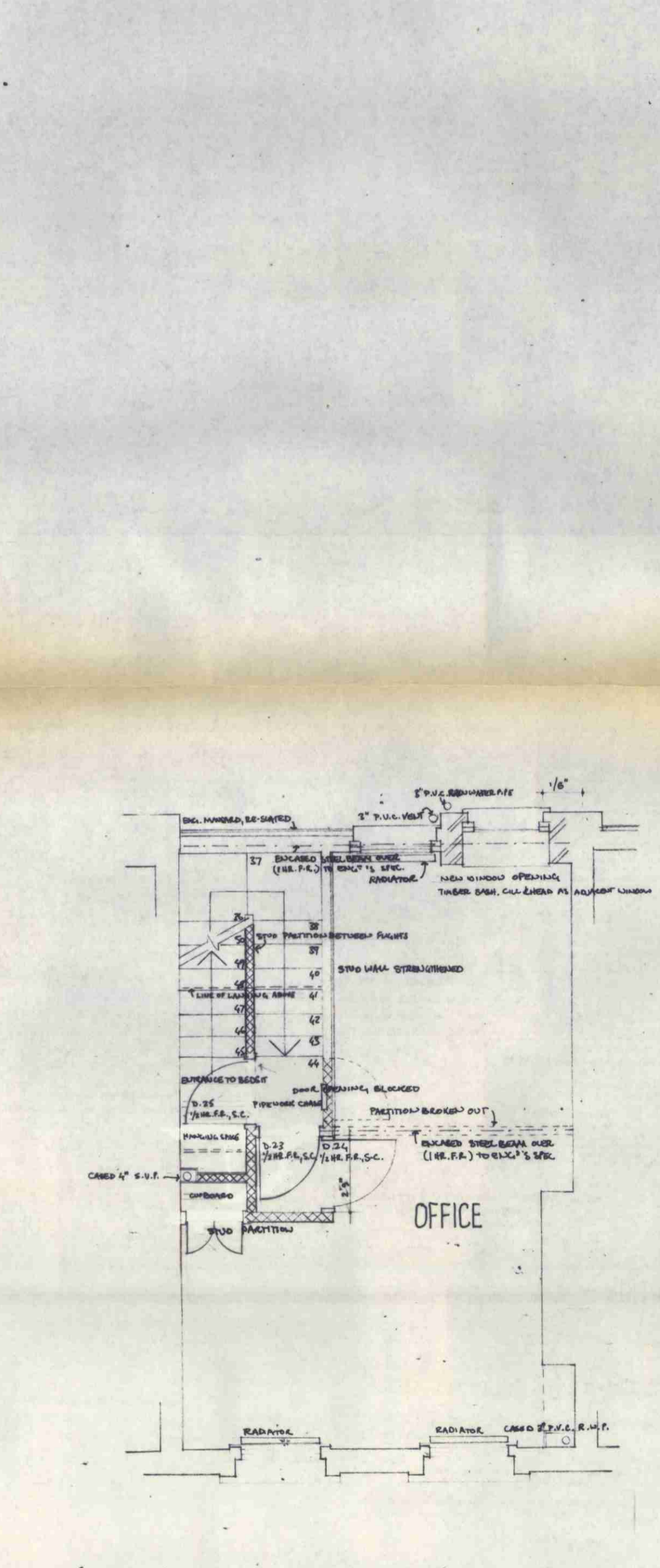
BASEMENT



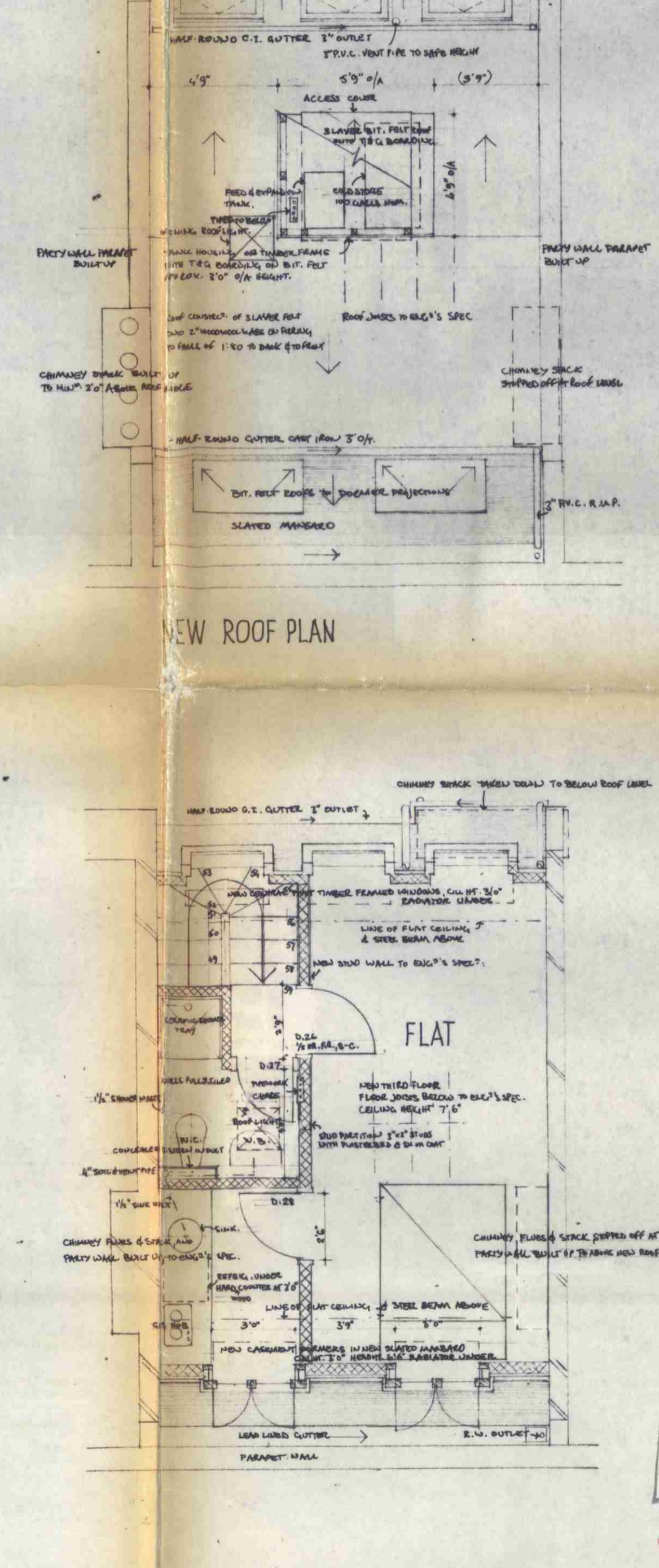
GROUND FLOOR



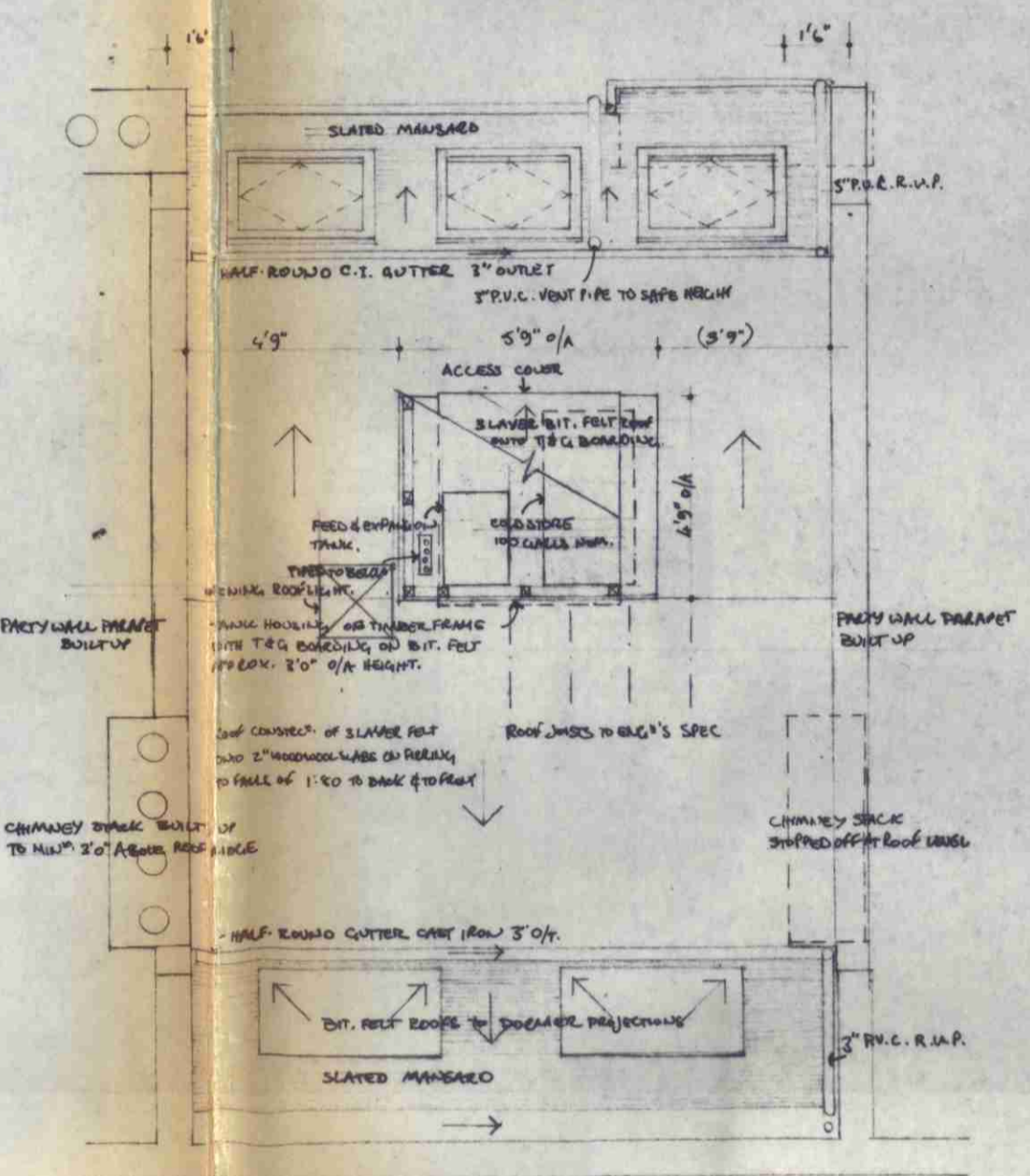
FIRST FLOOR



SECOND FLOOR



NEW THIRD FLOOR



NEW ROOF PLAN

LONDON BOROUGH OF CAMDEN
 PLANS APPROVED
 12 MAR 1974
 ON BEHALF OF THE COUNCIL

CASE COPY

CTP/J11/25/A/18192

REVISIONS	DATE	SUFFIX
ROGER POLLARD & ASSOCIATES 11 JERUSALEM PASSAGE ST. JOHN'S SQUARE EC1V 4JP TELEPHONE 01-253 9723		
JOB TITLE 87 ARLINGTON ROAD, LONDON, N.W.1	SCALE 1/8" = 1'-0"	DATE JAN. 1974
DRAWING TITLE PLANS	JOB No. 231	DRAWG. No. 10