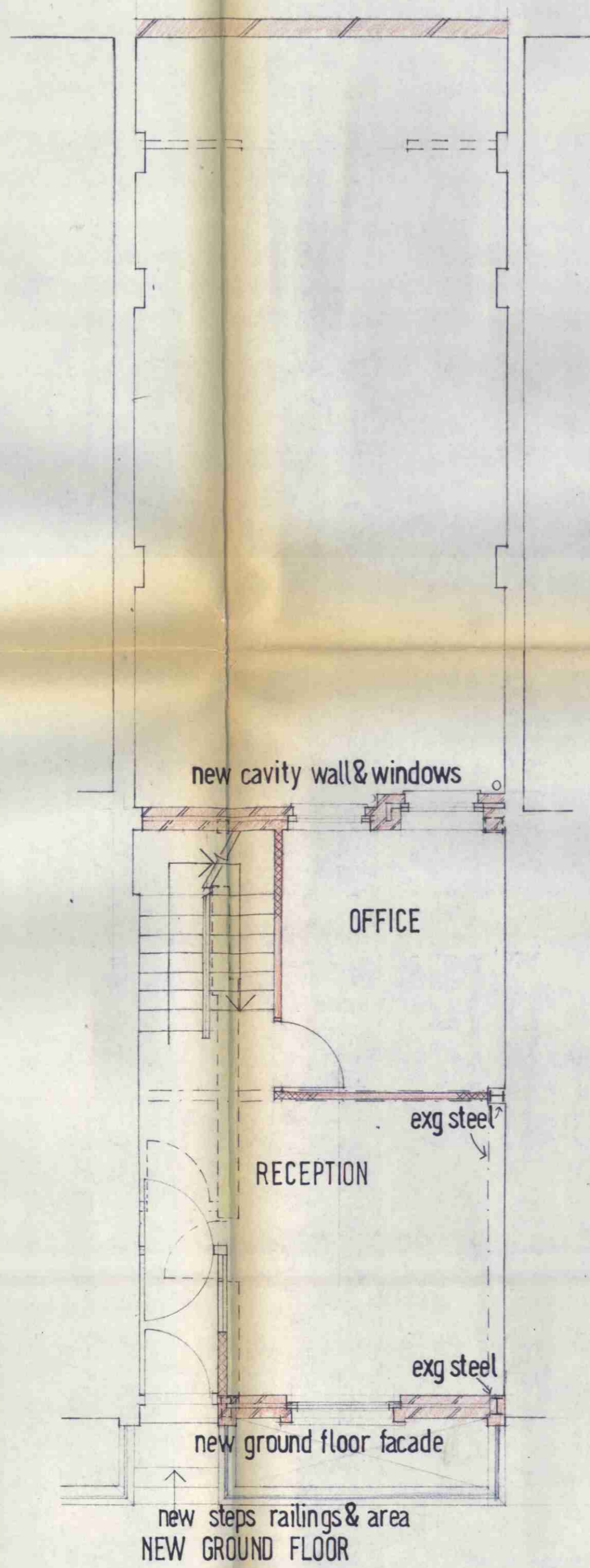
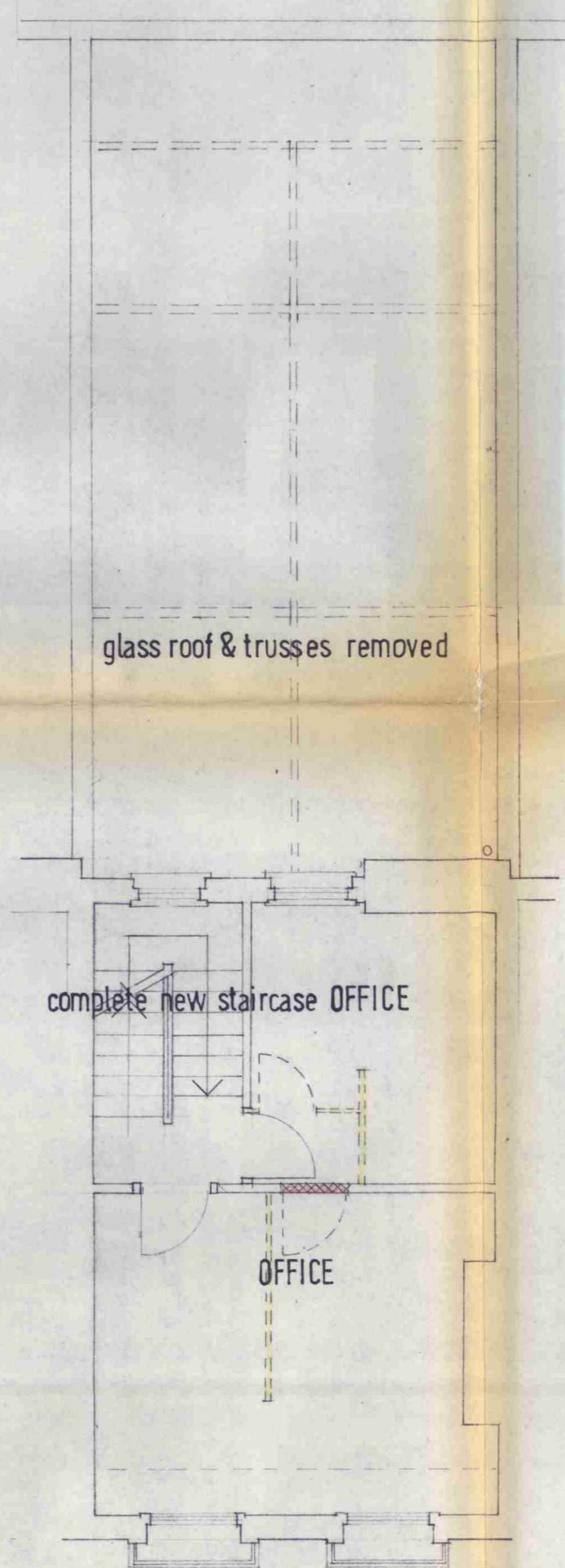


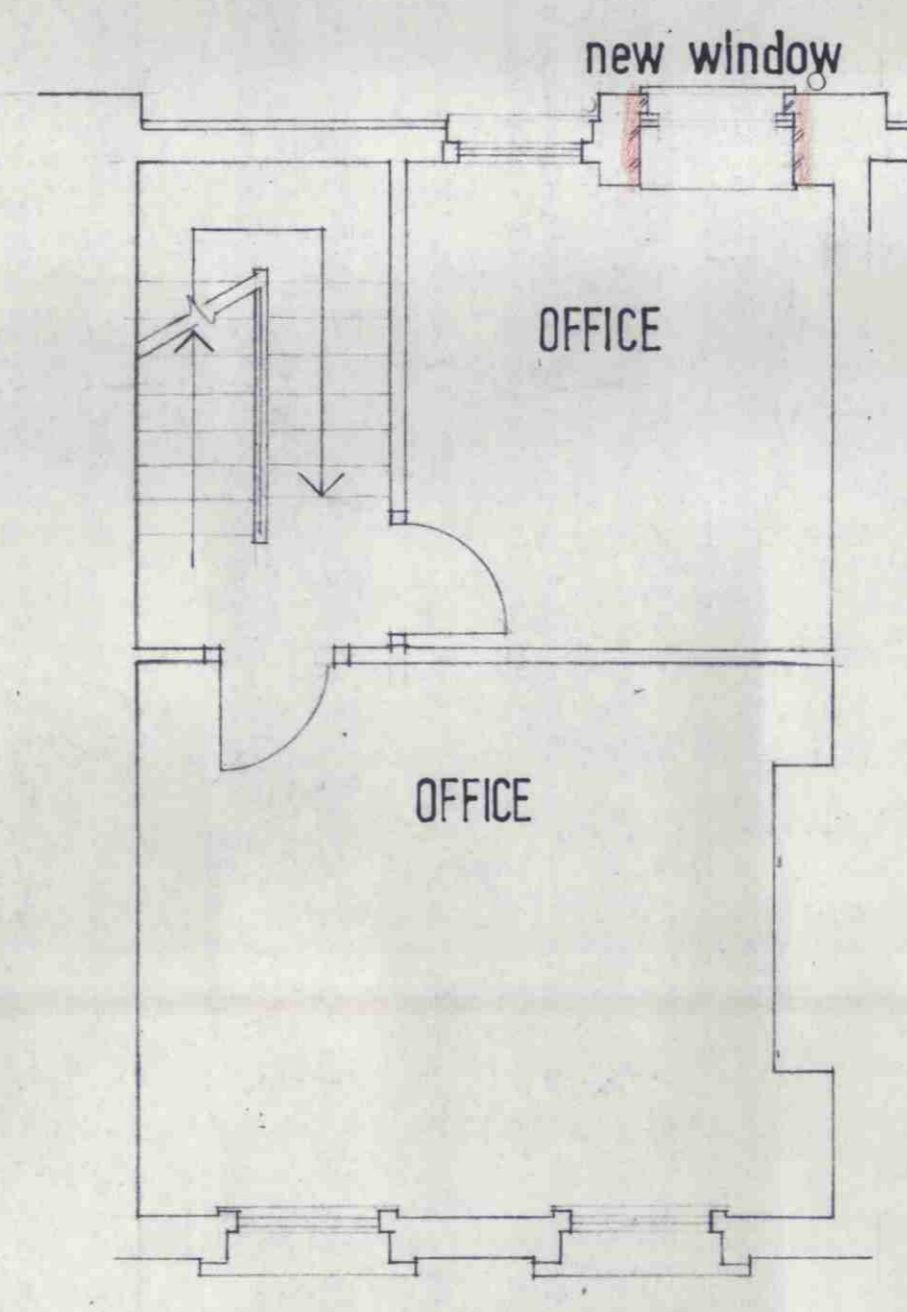
NEW BASEMENT



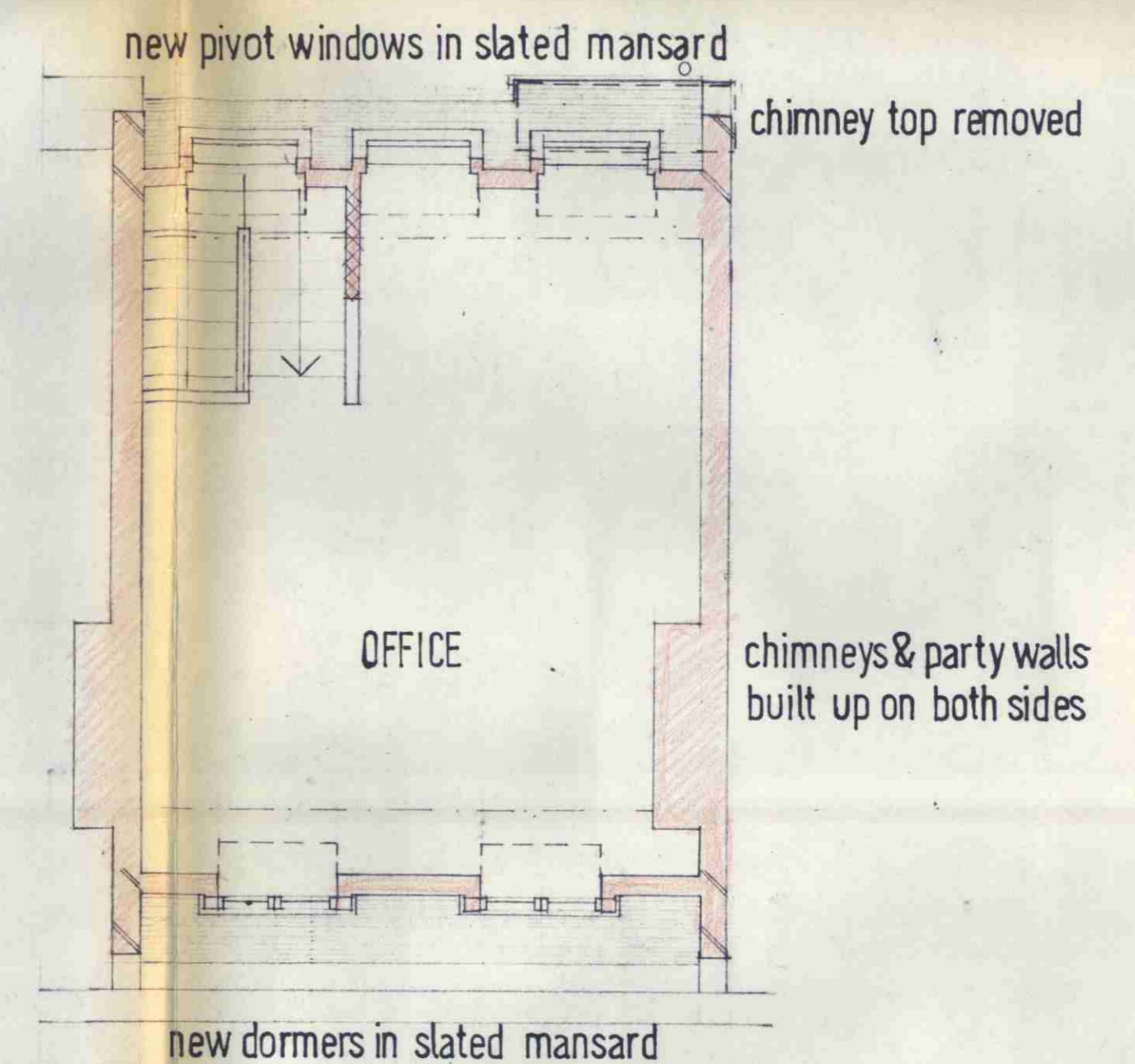
NEW GROUND FLOOR



FIRST FLOOR



SECOND FLOOR



NEW THIRD FLOOR

CTP/J11/25 / A /17626

REVISIONS	DATE	SUFFIX
ROGER FOLLARD & ASSOCIATES 11 JERUSALEM PASSAGE ST. JOHN'S SQUARE EC1V 4JP TELEPHONE 01-253 9723		
JOB TITLE	SCALE	DATE
87 ARLINGTON ROAD NW.1.	1/4"-1'0"	OCT. '73
DRWG. TITLE	JOB No.	DRWG. No.
PROPOSAL FOR OFFICE USE	231	6