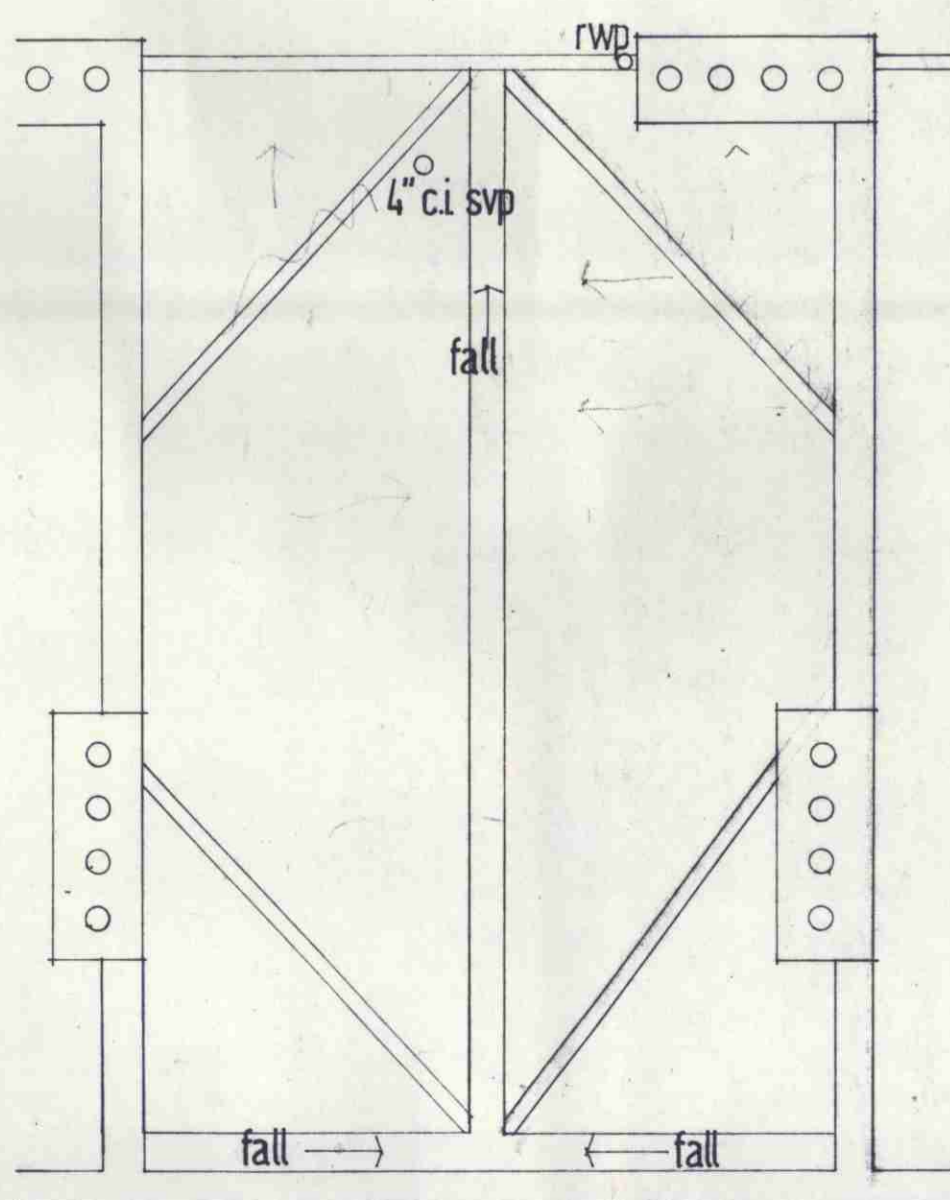
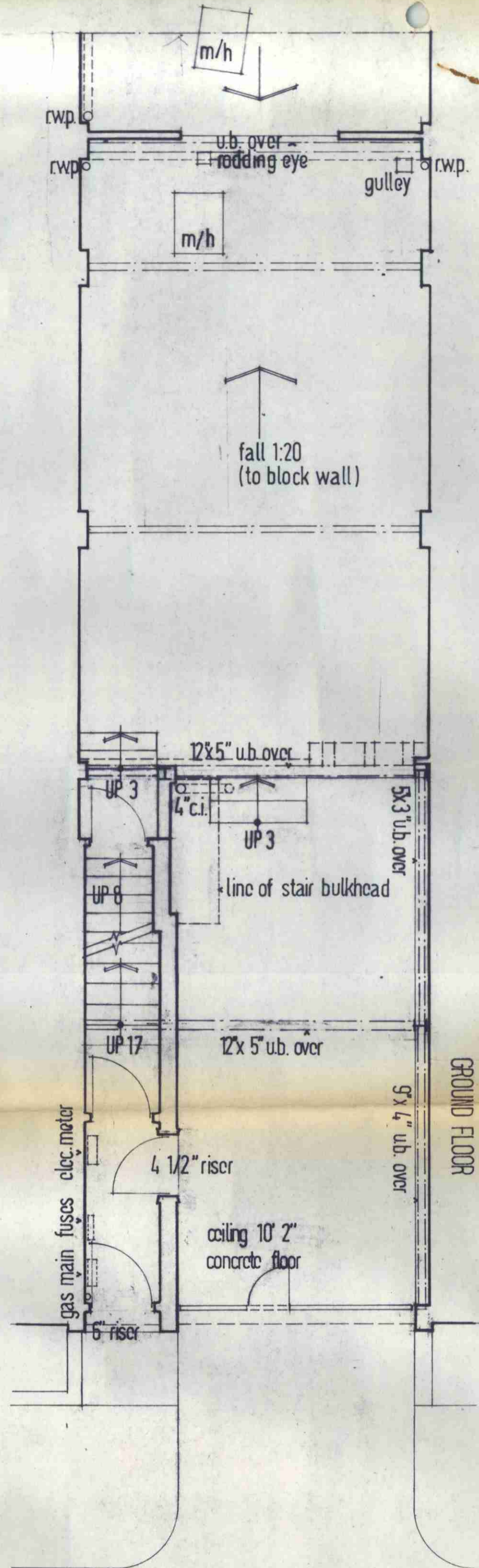


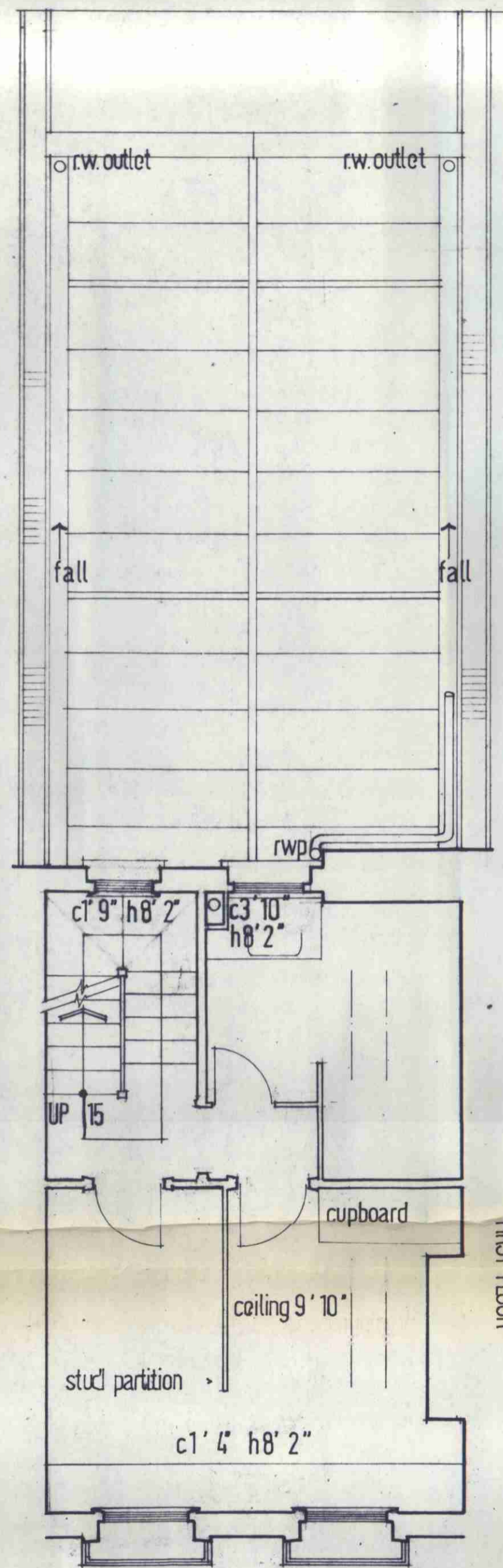
BASEMENT



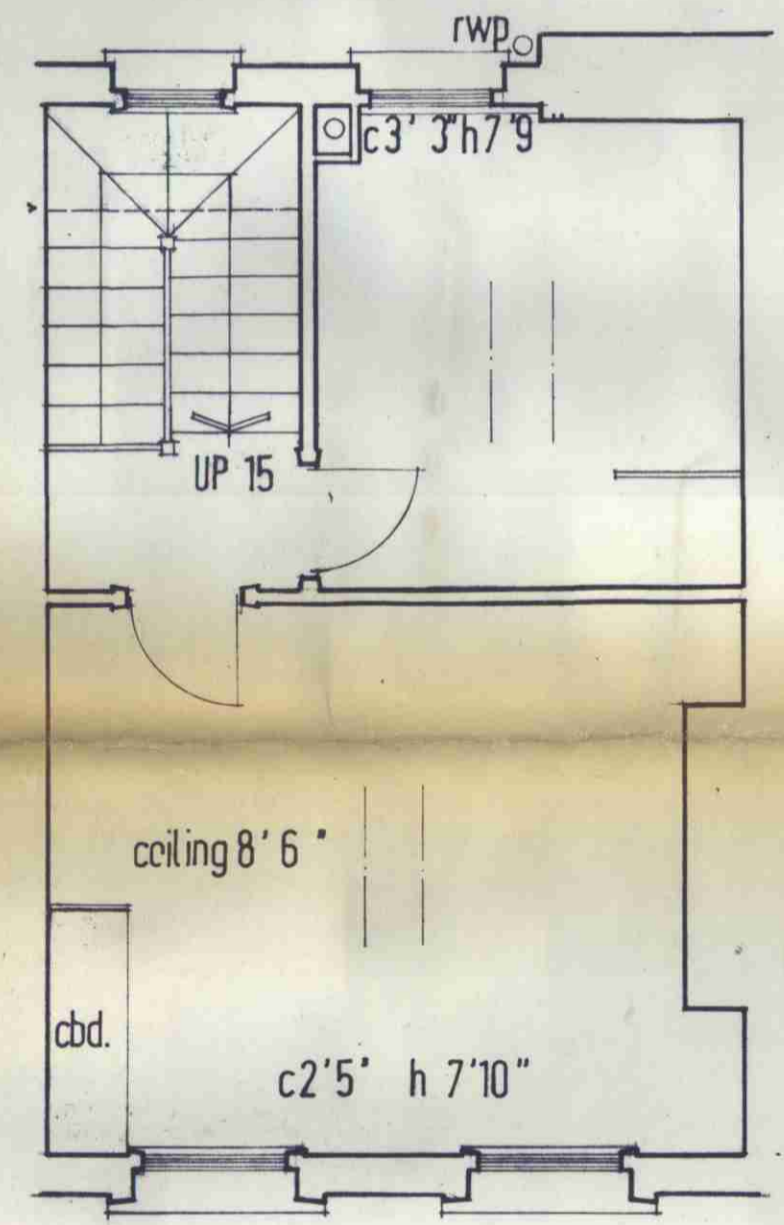
ROOF PLAN



GROUND FLOOR



FIRST FLOOR



SECOND FLOOR

LONDON BOROUGH OF CAMDEN
 PLANS APPROVED
 DISAPPROVED
 15 JAN 1974
 ON BEHALF OF THE COUNCIL

CASE COPY

CTP/J11/25 / A / 17626

REVISIONS	DATE	SUFTD
REIGER POLLARD & ASSOCIATES 11 JERUSALEM PASSAGE ST. JOHN'S SQUARE ECIV 4JP TELEPHONE 01-253 9723		
JOB TITLE	SCALE	DATE
87 ARLINGTON RD. NW	1/4"=1'	6 SEPT 73
DRWG TITLE	JOB No.	DR. No.
survey/plans	231	1