

- Existing windows removed and 2No. new openings created below for new entrance doors.
- 1960s extension to the corner of Tonbridge Walk/ Euston Road to be removed
- Existing louvres in window openings to be removed
- Existing bridge connection to be demolished. Work to be undertaken in Crosstree Annex development.
- Existing 1990's conservatory to be removed.
- Existing louvres in window openings to be removed
- Bottom 3 courses of slate removed during improvement works to gutters; to be reinstated.

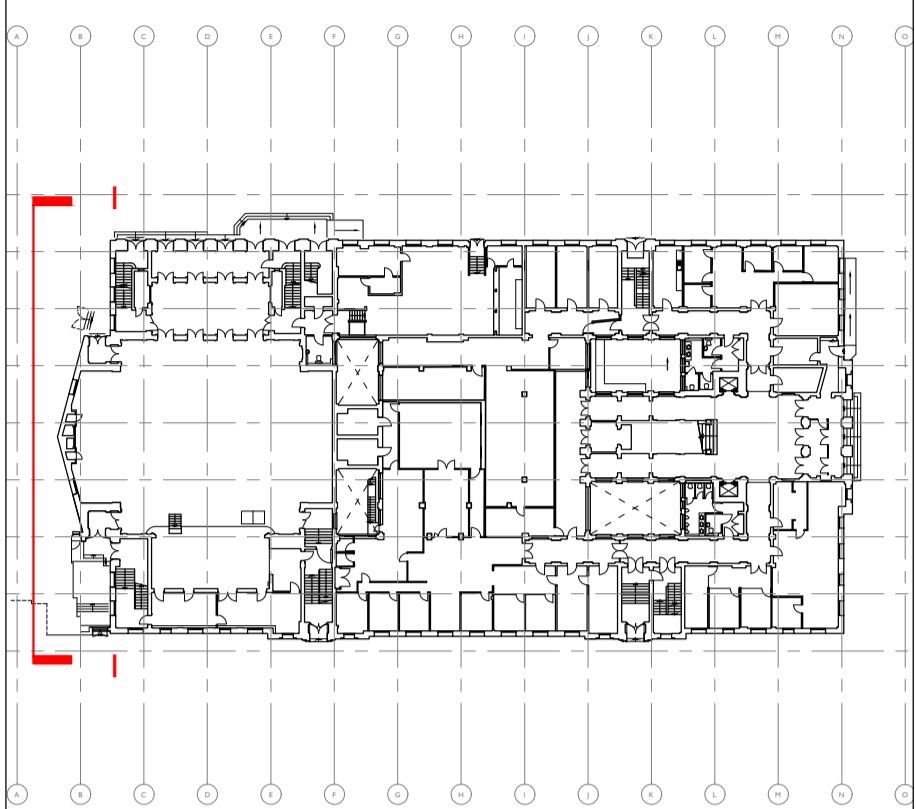
Notes:

Drawings are based on survey data and may not accurately represent what is physically present.

All dimensions are to be verified on site before proceeding with the work.

All dimensions are in millimeters unless noted otherwise.

Purcell shall be notified in writing of any discrepancies.



Demolitions & Alterations Key

Original fabric defined as that documented in Archive Drawings. Where date of fabric is unknown, it is assumed as original.

- Original Fabric: Section of Wall/Slab to be Demolished
- Original Fabric: Item to be Demolished
- Overhead - 300mm wide opening to ceiling for high level concealed cable distribution - make good after installation
- Overhead: Whole bay of vaulted ceiling to be removed for cabling distribution and reinstated
- Original Fabric: High level opening in wall for services distribution
- Floor trenches in slab for cable distribution
- Manhole: Opening in slab
- Non-Original Fabric: Section of Wall to be Demolished
- Non-Original Fabric: Item to be Demolished
- Window Number
- Door Number
- Annotation Item

Drawings to be read in conjunction with:

Internal Repairs & Builder's Works drawing series (93)000 for key spaces
Conservation Strategy Report CTH-PUR-MP-00-SP-A-00005

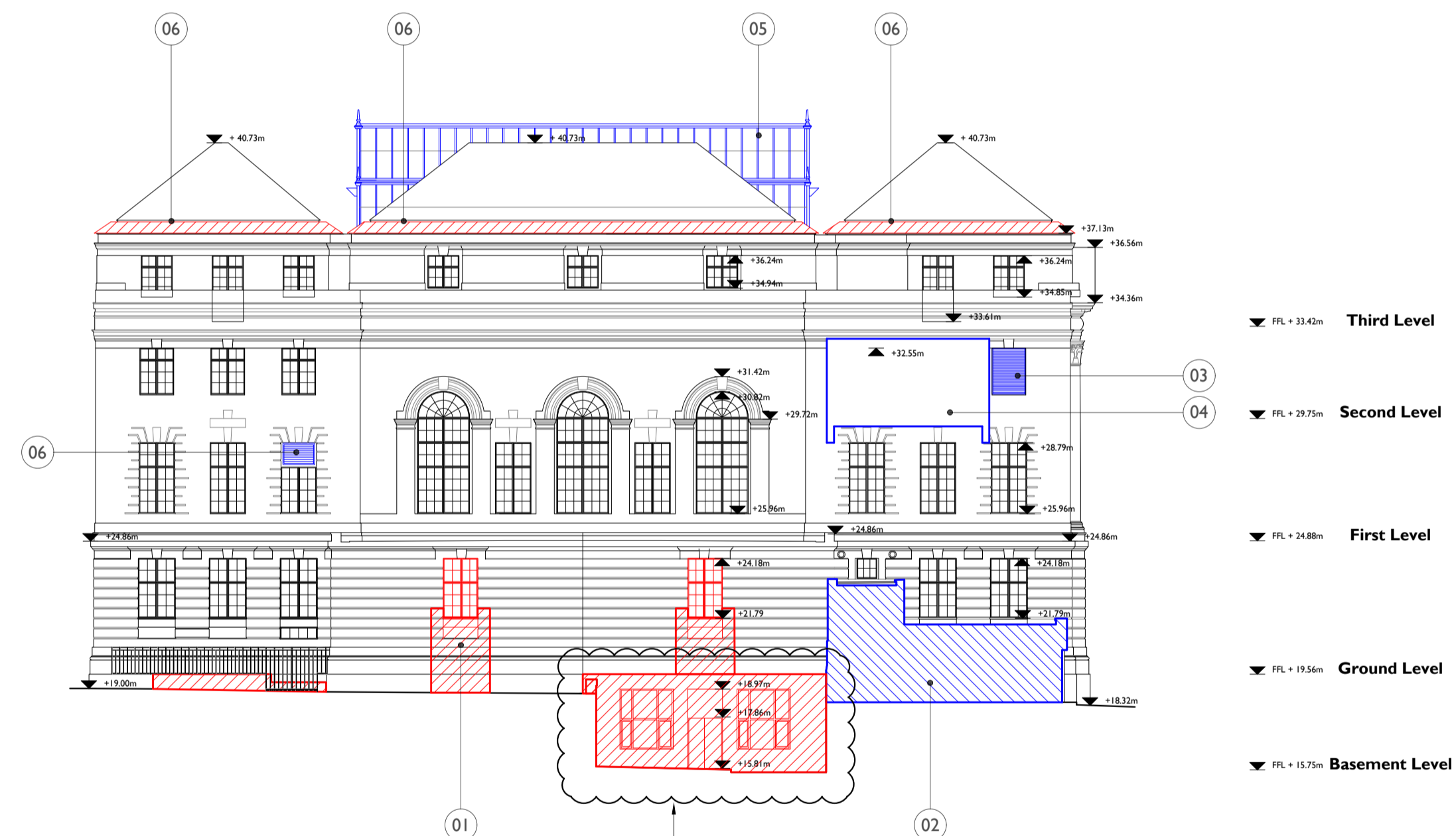
1:200 Scale



SS P01	08 Jul 2019	NS	NS
SS P00	17 Apr 2019	OB	NS

ISSUE	DATE	DRAWN	CHECKED	DESCRIPTION
DRAWING TITLE	GA PROPOSED DEMOLITIONS AND STRIP OUT TONBRIDGE WALK ELEVATION			
DRAWING NO.	CTH-PUR-MP-ZZ-DR-A-91103			
REVISION	SS P01			
SIZE & SCALE	A1L 1:200			
DRAWING STATUS	SS SUITABLE FOR PLANNING			

CLIENT	Lendlease	
PROJECT	Camden Town Hall	
JOB NUMBER	238664	



Rev P01: External wall, facing onto existing lightwell, to be demolished to facilitate the insertion of steel beam above to support new opening within Tonbridge Walk prow.