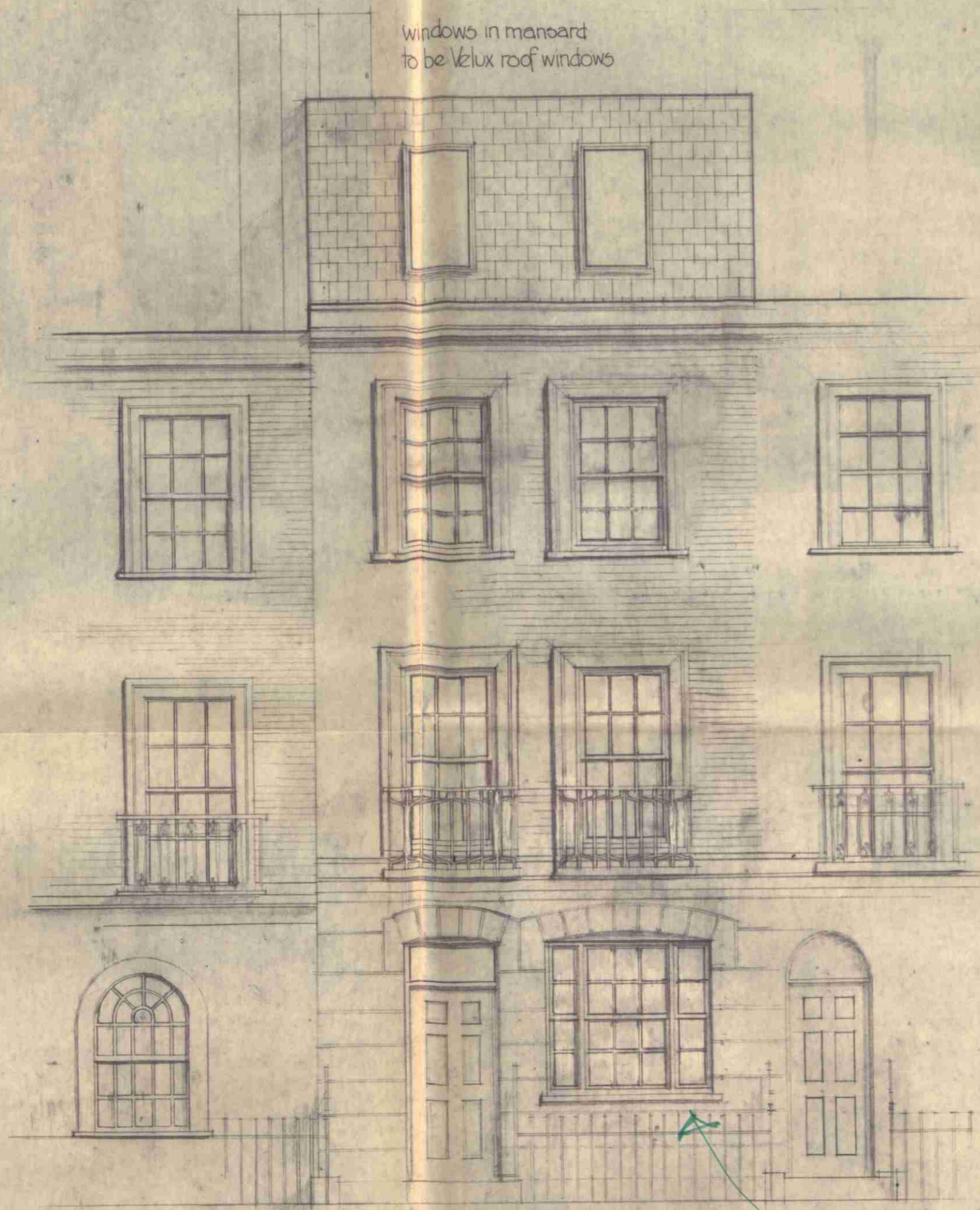


**party wall?
15" B.S. spec. in future?*

front elevation.



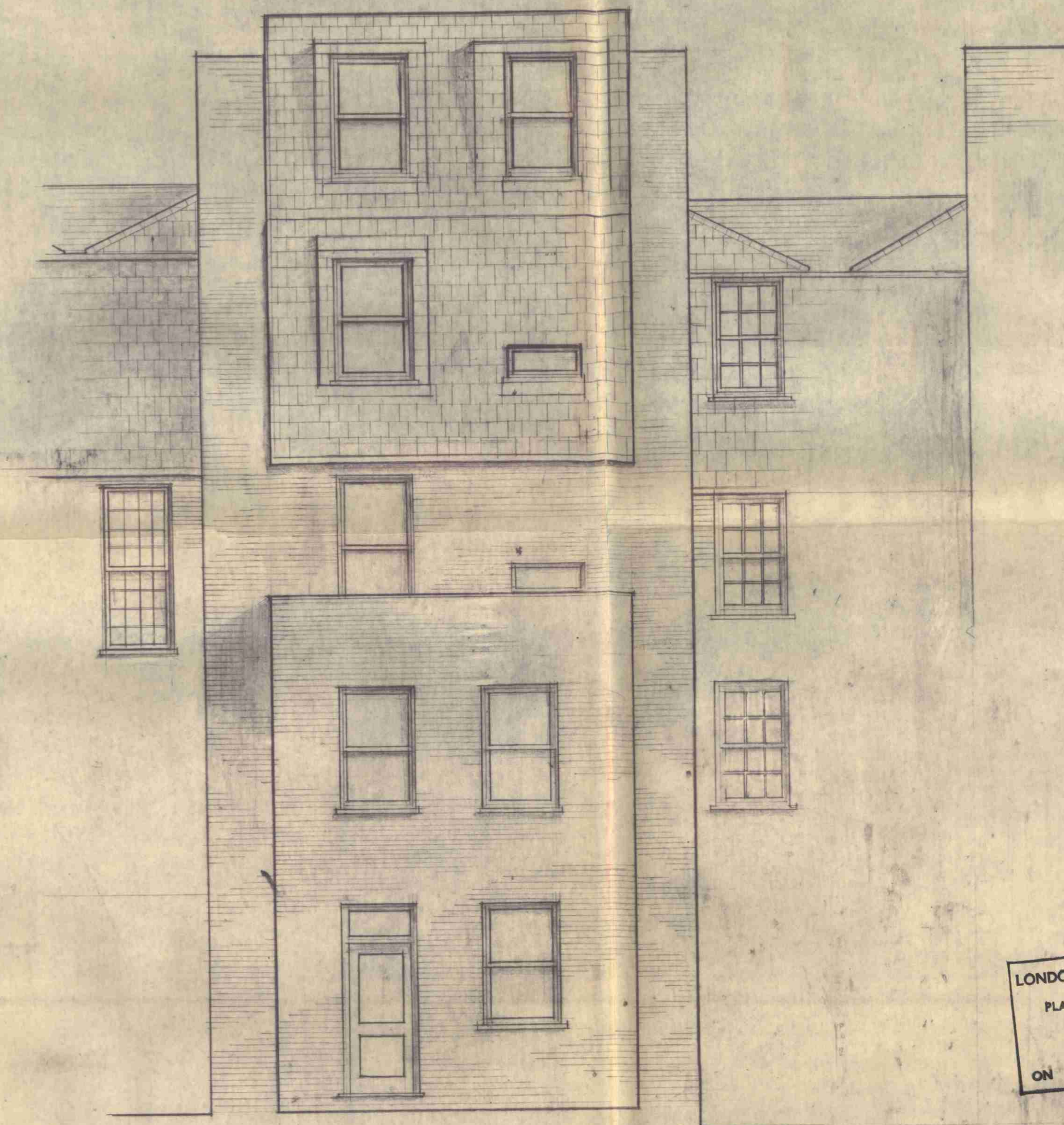
windows in mansard
to be Velux roof windows

panels in door
to be acid etched
glass panels

check slight uneven

roofing material to be slates
windows to match existing
bricks to be London stocks.

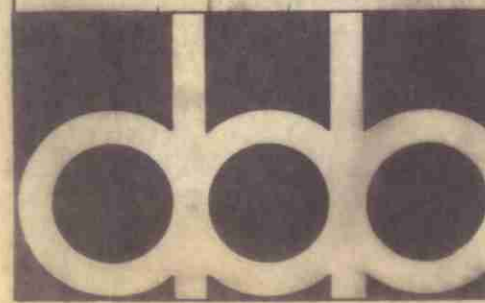
rear elevation



rear windows to be aluminium double hung in timber frames.
other materials to be as front elevation

LONDON BOROUGH OF CAMDEN
APPROVED
PLANS DISAPPROVED
5 JUL 1972
ON BEHALF OF THE COUNCIL

STP/T11 25 / A & 134/2



scale
1/4" = 10"

drawn by c.d.f.
checked by
date 11.4.72

22 Ferrins Walk, London NW3.

revisions
74-72 a elevation amended

87, arlington street

674-5a

proposals: elevations

DINERMAN DAVISON ASSOCIATES chartered architects 01-435-0038